

PRE-formance

Giving you the convenience of a pre-fabricated product - plus the flexibility to accommodate job site requirements



PRE-formance

Giving you the convenience of a pre-fabricated product - plus the flexibility to accommodate job site requirements.

Contractors are continually looking for ways to improve job site efficiency and properly align skilled resources to meet tight commercial construction project deadlines. PRE-formance™ delivers the pre-engineered and pre-assembled combination of mounting method, outlet box, plaster ring, devices and leads to simplify branch wiring installation.

PRE-formance pre-fabricated products delivers:

- The ideal solution for commercial buildings with repetitive installations such as hotels, condominium, commercial and retail offices, hospitals and apartments
- Lower total cost of ownership
- Improved material handling and job site safety
- Flexibility to allow skill set allocation to match job requirements
- Elimination of job site material “piles” and inefficient searching for pieces and parts at the job site
- Reduction of overages and scrap, including expensive wire and cable
- Direct labor savings over traditional “stick-build” wiring methods for improved job site efficiency



PRE-formance

Flexible prefabricated branch wiring assemblies available in three comprehensive categories to suit customer project requirements.

Basic See pages 4 - 10

- Available with the most popular drawn and welded boxes with ground screw and pigtail lead already installed
- Patented Uni-Mount™ cover combines plaster ring and mounting method
- Standard pre-fabricated assemblies with mounting brackets, boxes, mud rings, ground screw and pigtail leads
- Most popular configurations available from stock

Custom See pages 11 - 21

- Cafeteria style selection of Eaton's Crouse-Hinds extensive line of mounting brackets, boxes, plaster rings, wiring devices, and other associated branch wiring accessories
- Assembled-to-order pre-fabricated products for both AC/MC and EMT applications
- Available with:
 - Wiring devices with pigtail leads and push-in connectors
 - AC/MC or EMT connectors installed
 - Cable whips attached per customer specification
- Assembled from stock components to meet tight job requirements

Complete See pages 24 - 27

- The most complete turn-key solution for commercial construction projects. The process begins with your architectural and electrical engineering drawings and delivers a total pre-fabricated branch wiring system: custom produced, labeled, packaged by room and floor, and delivered to your exact location
- The ideal solution for commercial buildings with repetitive installations such as hotels, condominium, commercial and retail offices, hospitals and apartments
- Job-specific customized drawings and labels simplify material handling and speeds installation
- Dedicated project management and engineering expertise through every step of the project
- Innovative PRE-formance products are designed by contractors for contractors and provide ease of wiring and job site flexibility to get the job done right and on-time!
- Includes flexible products designed with pre-fabrication, productivity, safety and job site speed in mind
- Contractors can realize 30 to 40% labor savings over traditional "stick-build" wiring methods for greatly improved job site efficiency

PRE-formance Basic Assemblies

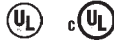


Boxes with pre-installed ground screw and pigtail

Eaton's Crouse-Hinds boxes with pre-installed ground screw and pigtail provide a simple, readily available way to meet grounding and bonding requirements for metal boxes. Includes the 4" or 4-11/16" square box with ground screw and lead installed*.

Certifications & Compliances:

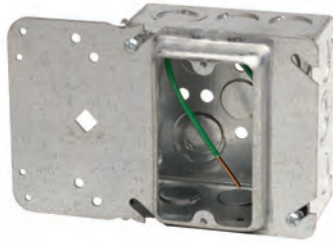
- UL Listed and cUL Listed
- UL File No. E-23156



Cat. #	Description - Pre-Fabricated Box, Cover, Ground Screw and Lead Assembly	Capacity Cu. In.	Unit Qty.	Wt. Lbs Per 100
For Conduit				
TP403PF	4D 1/2 & 3/4 KO Welded Box with ground screw and lead	30.3	25	84
TP404PF	4 SQ 1/2 & 3/4 KO Welded Box with ground screw and lead	21.0	25	72
TP414PF	4 SQ 1/2 & 3/4 KO Drawn Box with ground screw and lead	21.0	25	67
TP431PF	4 SQ MCI Box with ground screw and lead	—	25	91
TP454PF	4 SQ MCI Box with ground screw and lead	22.0	25	92
TP288PF	4D Octagon Box 1/2" KO with ground screw and lead	21.5	25	64
TP290PF	4D Octagon Box 3/4" KO with ground screw and lead	21.5	25	64
TP292PF	4D Octagon Box 1/2 & 3/4" KO with ground screw and lead	21.5	25	64
TP338PF	4 Oct MCI Cable Outlet Box S Set 1/2 Brkt with ground screw and lead	21.5	25	82
TP367PF	4D Octagon Box for AC/MC S Bracket, with ground screw and lead	15.5	25	100
TP438PF	4D Drawn Box 1/2 & 3/4 Concentric KO with ground screw and lead	30.3	25	84
TP451PF	4D Welded Box with VMS Bracket with ground screw and lead	30.3	25	96
TP456PF	4 SQ MCI Box with F Bracket, with ground screw and lead	22.0	25	92
TP521PF	4-11/16" 2-1/8" Deep Welded Box with ground screw and lead	44.0	25	115
TP523PF	4-11/16" 1-1/2" Deep Welded Box with ground screw and lead	29.5	25	99
TP556PF	4-11/16" 2-1/8" Deep Drawn Box with ground screw and lead	42.0	25	104

*Standard ground pigtail is #8-32 ground screw with 8' insulated No. 12 copper wire.

PRE-formance Basic Assemblies



Uni-Mount Assemblies

Eaton's Crouse-Hinds combines the patented Uni-Mount cover (mounting method and mud ring, all in one) to a 4" square box with ground screw and lead installed to simplify ordering, receiving and improve job site speed.

Certifications & Compliances:

- UL Listed and cUL Listed
- UL File No. E-23156



Pre-fabricated Box Features:

- Uni-Mount provides a secure box support and features a built-in plaster ring
- Can be field assembled with outlet box for power applications or used without a box for low voltage applications
- Pre-fabricated Uni-Mount is available with most popular outlet boxes with a choice of 1/2", 5/8" or 3/4" raised cover and includes ground screw and lead
- Rigid bracket design eliminates the need for far side support
- Guide tabs ensure alignment on studs

Uni-Mount Features:

- Uni-Mount combines the features of a mounting device plate with those of a box support, giving you one universal plate for all of your needs. Specifically designed for use with metal or wood studs.
- New and improved Uni-Mount incorporates four small holes on the left side (support side) of the bracket. These holes allow for the attachment of box mounting brackets to allow for use of both sides of the stud. The holes are strategically located to accept the B-Line BB423 bracket. Additionally, the viewing hole has been significantly enlarged (and is now diamond shaped) to make it even easier to find mark lines on the stud.



1 1/2" Deep
Welded
22.0"
Cubic
Capacity

TP404



2 1/8" Deep
Welded
30.3"
Cubic
Capacity

TP403



1 1/2" Deep
Drawn
21.0"
Cubic
Capacity

TP414



2 1/8" Deep
Drawn
30.3"
Cubic
Capacity

TP434

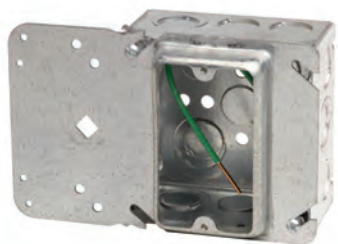


2 1/8" Deep
Welded
30.3"
Cubic
Capacity

TP436

Cat. #	Description - Pre-Fabricated Box, Cover, Ground Screw and Lead Assembly	Capacity Cu. In.	Unit Qty.	Wt. Lbs Per 100
For Conduit				
TP30404PF	1-1/2" Deep Welded Box, 1/2" Raised Single Gang Uni-Mount Cover, ground screw and lead	25.8	25	115
TP30414PF	1-1/2" Deep Drawn Box, 1/2" Raised Single Gang Uni-Mount Cover, ground screw and lead	24.8	25	110
TP31404PF	1-1/2" Deep Welded Box, 5/8" Raised Single Gang Uni-Mount Cover, ground screw and lead	26.3	25	118
TP31414PF	1-1/2" Deep Drawn Box, 5/8" Raised Single Gang Uni-Mount Cover, ground screw and lead	25.3	25	113
TP32404PF	1-1/2" Deep Welded Box, 3/4" Raised Single Gang Uni-Mount Cover, ground screw and lead	27.5	25	122
TP32414PF	1-1/2" Deep Drawn Box, 3/4" Raised Single Gang Uni-Mount Cover, ground screw and lead	26.5	25	117
TP35404PF	1-1/2" Deep Welded Box, 1/2" Raised Two Gang Uni-Mount Cover, ground screw and lead	28.0	25	110
TP35414PF	1-1/2" Deep Drawn Box, 1/2" Raised Two Gang Uni-Mount Cover, ground screw and lead	27.0	25	105
TP36404PF	1-1/2" Deep Welded Box, 5/8" Raised Two Gang Uni-Mount Cover, ground screw and lead	30.0	25	124
TP36414PF	1-1/2" Deep Drawn Box, 5/8" Raised Two Gang Uni-Mount Cover, ground screw and lead	29.0	25	119
TP37404PF	1-1/2" Deep Welded Box, 3/4" Raised Two Gang Uni-Mount Cover, ground screw and lead	31.0	25	126
TP37414PF	1-1/2" Deep Drawn Box, 3/4" Raised Two Gang Uni-Mount Cover, ground screw and lead	30.0	25	121
TP30403PF	2-1/8" Deep Welded Box, 1/2" Raised Single Gang Uni-Mount Cover, ground screw and lead	34.1	25	107
TP30434PF	2-1/8" Deep Drawn Box, 1/2" Raised Single Gang Uni-Mount Cover, ground screw and lead	34.1	25	127
TP31403PF	2-1/8" Deep Welded Box, 5/8" Raised Single Gang Uni-Mount Cover, ground screw and lead	34.6	25	110
TP31434PF	2-1/8" Deep Drawn Box, 5/8" Raised Single Gang Uni-Mount Cover, ground screw and lead	34.6	25	130
TP31436PF	2-1/8" Deep Welded Box, 5/8" Raised Single Gang Uni-Mount Cover, ground screw and lead	26.3	25	130
TP32403PF	2-1/8" Deep Welded Box, 3/4" Raised Single Gang Uni-Mount Cover, ground screw and lead	35.8	25	114
TP32434PF	2-1/8" Deep Drawn Box, 3/4" Raised Single Gang Uni-Mount Cover, ground screw and lead	35.8	25	134
TP35403PF	2-1/8" Deep Welded Box, 1/2" Raised Two Gang Uni-Mount Cover, ground screw and lead	36.3	25	102
TP35434PF	2-1/8" Deep Drawn Box, 1/2" Raised Two Gang Uni-Mount Cover, ground screw and lead	36.3	25	122
TP36403PF	2-1/8" Deep Welded Box, 5/8" Raised Two Gang Uni-Mount Cover, ground screw and lead	38.3	25	116
TP36434PF	2-1/8" Deep Drawn Box, 5/8" Raised Two Gang Uni-Mount Cover, ground screw and lead	38.3	25	136
TP37403PF	2-1/8" Deep Welded Box, 3/4" Raised Two Gang Uni-Mount Cover, ground screw and lead	39.3	25	118
TP37434PF	2-1/8" Deep Drawn Box, 3/4" Raised Two Gang Uni-Mount Cover, ground screw and lead	39.3	25	138

PRE-formance Basic Assemblies



Uni-Mount Assemblies

Eaton's Crouse-Hinds combines the patented Uni-Mount cover (mounting method and mud ring, all in one) to a 4" square box with ground screw and lead installed to simplify ordering, receiving and improve job site speed.

Certifications & Compliances:

- UL Listed and cUL Listed
- UL File No. E-23156



Cat. #	Description - Pre-Fabricated Box, Cover, Ground Screw and Lead Assembly	Capacity Cu. In.	Unit Qty.	Wt. Lbs Per 100
For AC/MC Cable				
TP30454PF	1-1/2" Deep Welded Box assembled to 1/2" Raised Single Gang Uni-Mount Cover	24.8	25	114
TP31454PF	1-1/2" Deep Welded Box assembled to 5/8" Raised Single Gang Uni-Mount Cover	25.3	25	117
TP32454PF	1-1/2" Deep Welded Box assembled to 3/4" Raised Single Gang Uni-Mount Cover	26.5	25	121
TP35454PF	1-1/2" Deep Welded Box assembled to 1/2" Raised Two Gang Uni-Mount Cover	27.0	25	109
TP36454PF	1-1/2" Deep Welded Box assembled to 5/8" Raised Two Gang Uni-Mount Cover	29.0	25	123
TP37454PF	1-1/2" Deep Welded Box assembled to 3/4" Raised Two Gang Uni-Mount Cover	30.0	25	125
TP30431PF	2-1/8" Deep Welded Box assembled to 1/2" Raised Single Gang Uni-Mount Cover	34.1	25	134
TP31431PF	2-1/8" Deep Welded Box assembled to 5/8" Raised Single Gang Uni-Mount Cover	34.6	25	137
TP32431PF	2-1/8" Deep Welded Box assembled to 3/4" Raised Single Gang Uni-Mount Cover	35.8	25	141
TP35431PF	2-1/8" Deep Welded Box assembled to 1/2" Raised Two Gang Uni-Mount Cover	36.3	25	129
TP36431PF	2-1/8" Deep Welded Box assembled to 5/8" Raised Two Gang Uni-Mount Cover	38.3	25	143
TP37431PF	2-1/8" Deep Welded Box assembled to 3/4" Raised Two Gang Uni-Mount Cover	39.3	25	145

Cat. #	Description - Pre-Fabricated Back Box, Cover, Ground Screw and Lead Assembly	Capacity Cu. In.	Unit Qty.	Wt. Lbs Per 100
For Conduit				
TP304DPF	2-1/8" Deep Welded Back Box, 1/2" Raised Single Gang Uni-Mount Cover, ground screw, lead, back cover	24.8	25	114
TP314DPF	2-1/8" Deep Welded Back Box, 5/8" Raised Single Gang Uni-Mount Cover, ground screw, lead, back cover	25.3	25	117
TP324DPF	2-1/8" Deep Welded Back Box, 3/4" Raised Single Gang Uni-Mount Cover, ground screw, lead, back cover	26.5	25	121
TP354DPF	2-1/8" Deep Welded Back Box, 1/2" Raised Two Gang Uni-Mount Cover, ground screw, lead, back cover	27.0	25	109
TP364DPF	2-1/8" Deep Welded Back Box, 5/8" Raised Two Gang Uni-Mount Cover, ground screw, lead, back cover	29.0	25	123
TP374DPF	2-1/8" Deep Welded Back Box, 3/4" Raised Two Gang Uni-Mount Cover, ground screw, lead, back cover	30.0	25	125

Additional Uni-Mount / box configurations available. Consult factory for details.
Remove the PF for boxes without ground screw and lead.
For stranded wire replace PF with PFA.

PRE-formance Basic Assemblies



Single Sided Assemblies

Single Sided Direct Mount Assemblies - all catalog numbers contain a single sided direct mount bracket (for 2-1/2" and 3-1/2" studs), 4" square steel box, mud ring, and 8" insulated solid ground wire with ground screw

Certifications & Compliances:

- UL Listed and cUL Listed
- UL File No. E-324733



Cat. #	Description - Pre-Fabricated Box, Cover, Ground Screw and Lead Assembly
PFH3 4D58	BB423 Single sided bracket, TP403 2-1/8" deep box with pigtail, 5/8" raised 1G mud ring
PFH3 4D75	BB423 Single sided bracket, TP403 2-1/8" deep box with pigtail, 3/4" raised 1G mud ring
PFH3 4DAR*	BB423 Single sided bracket, TP403 2-1/8" deep box with pigtail, Adjustable 1G mud ring
PFH3 4S58	BB423 Single sided bracket, TP404 1-1/2" deep box with pigtail, 5/8" raised 1G mud ring
PFH3 4S75	BB423 Single sided bracket, TP404 1-1/2" deep box with pigtail, 3/4" raised 1G mud ring
PFH3 4D258	BB423 Single sided bracket, TP403 2-1/8" deep box with pigtail, 5/8" raised 2G mud ring
PFH3 4D275	BB423 Single sided bracket, TP403 2-1/8" deep box with pigtail, 3/4" raised 2G mud ring
PFH3 4S258	BB423 Single sided bracket, TP404 1-1/2" deep box with pigtail, 5/8" raised 2G mud ring
PFH3 4S275	BB423 Single sided bracket, TP404 1-1/2" deep box with pigtail, 3/4" raised 2G mud ring

- 4" and 6" Far side supports are available. Replace PFH3 (for 2-1/2" and 3-1/2" studs) with PFH4 (4") (BB44) or PFH6 (6") (BB46).
- Refer to the PRE-formance Catalog Numbering System at the end of this section for additional assembly options and configurations.
- * Not UL Listed. All components are third party certified.



Double Sided Assemblies

Double Sided Direct Mount Assemblies - all catalog numbers contain a double sided direct mount bracket (for 2-1/2" and 3-1/2" studs), 4" square steel box, mud ring and 8" insulated solid ground wire with ground screw.

Certifications & Compliances:

- UL Listed and cUL Listed
- UL File No. E-324733



Cat. #	Description - Pre-Fabricated Box, Cover, Ground Screw and Lead Assembly
PF3DS 4D58	BB73 Double sided bracket, TP403 2-1/8" deep box with pigtail, 5/8" raised 1G mud ring
PF3DS 4D75	BB73 Double sided bracket, TP403 2-1/8" deep box with pigtail, 3/4" raised 1G mud ring
PF3DS 4DAR*	BB73 Double sided bracket, TP403 2-1/8" deep box with pigtail, Adjustable 1G mud ring
PF3DS 4S58	BB73 Double sided bracket, TP404 1-1/2" deep box with pigtail, 5/8" raised 1G mud ring
PF3DS 4S75	BB73 Double sided bracket, TP404 1-1/2" deep box with pigtail, 3/4" raised 1G mud ring
PF3DS 4D258	BB73 Double sided bracket, TP403 2-1/8" deep box with pigtail, 5/8" raised 2G mud ring
PF3DS 4D275	BB73 Double sided bracket, TP403 2-1/8" deep box with pigtail, 3/4" raised 2G mud ring
PF3DS 4S258	BB73 Double sided bracket, TP404 1-1/2" deep box with pigtail, 5/8" raised 2G mud ring
PF3DS 4S275	BB73 Double sided bracket, TP404 1-1/2" deep box with pigtail, 3/4" raised 2G mud ring

- 4" and 6" Far side supports are available. Replace PF3DS (for 2-1/2" and 3-1/2" studs) with PF4DS (4") (BB74) or PF6DS (6") (BB76).
- Refer to the PRE-formance Catalog Numbering System at the end of this section for additional assembly options and configurations.
- * Not UL Listed. All components are third party certified.

PRE-formance Basic Assemblies



Floor Mount Assemblies

Floor Mount Assemblies - all catalog numbers contain a 18" floor mount bracket, 4" square steel box, mud ring and 8" insulated solid ground wire with ground screw.

Certifications & Compliances:

- UL Listed and cUL Listed
- UL File No. E-324733



Cat. #	Description - Pre-Fabricated Box, Cover, Ground Screw and Lead Assembly
PF18FM 4D58	BBF18 Floor mount bracket, TP403 2-1/8" deep box with pigtail, 5/8" raised 1G mud ring
PF18FM 4D75	BBF18 Floor mount bracket, TP403 2-1/8" deep box with pigtail, 3/4" raised 1G mud ring
PF18FM 4DAR*	BBF18 Floor mount bracket, TP403 2-1/8" deep box with pigtail, Adjustable 1G mud ring
PF18FM 4S58	BBF18 Floor mount bracket, TP404 1-1/2" deep box with pigtail, 5/8" raised 1G mud ring
PF18FM 4S75	BBF18 Floor mount bracket, TP404 1-1/2" deep box with pigtail, 3/4" raised 1G mud ring
PF18FM 4D258	BBF18 Floor mount bracket, TP403 2-1/8" deep box with pigtail, 5/8" raised 2G mud ring
PF18FM 4D275	BBF18 Floor mount bracket, TP403 2-1/8" deep box with pigtail, 3/4" raised 2G mud ring
PF18FM 4S258	BBF18 Floor mount bracket, TP404 1-1/2" deep box with pigtail, 5/8" raised 2G mud ring
PF18FM 4S275	BBF18 Floor mount bracket, TP404 1-1/2" deep box with pigtail, 3/4" raised 2G mud ring

- Refer to the PRE-formance Catalog Numbering System at the end of this section for additional assembly options and configurations.
- * Not UL Listed. All components are third party certified.

Telescoping Slider Assemblies

Telescoping Slider Assemblies - all catalog numbers contain a 11-18" telescoping slider bracket, 4" square steel box, mud ring and 8" insulated solid ground wire with ground screw.

Certifications & Compliances:

- UL Listed and cUL Listed
- UL File No. E-324733



Cat. #	Description - Pre-Fabricated Box, Cover, Ground Screw and Lead Assembly
PF16TS 4D58	BB216TS Telescoping slider bracket, TP403 2-1/8" deep box with pigtail, 5/8" raised 1G mud ring
PF16TS 4D75	BB216TS Telescoping slider bracket, TP403 2-1/8" deep box with pigtail, 3/4" raised 1G mud ring
PF16TS 4DAR	BB216TS Telescoping slider bracket, TP403 2-1/8" deep box with pigtail, Adjustable 1G mud ring
PF16TS 4S58	BB216TS Telescoping slider bracket, TP404 1-1/2" deep box with pigtail, 5/8" raised 1G mud ring
PF16TS 4S75	BB216TS Telescoping slider bracket, TP404 1-1/2" deep box with pigtail, 3/4" raised 1G mud ring
PF16TS 4D258	BB216TS Telescoping slider bracket, TP403 2-1/8" deep box with pigtail, 5/8" raised 2G mud ring
PF16TS 4D275	BB216TS Telescoping slider bracket, TP403 2-1/8" deep box with pigtail, 3/4" raised 2G mud ring
PF16TS 4D2AR	BB216TS Telescoping slider bracket, TP403 2-1/8" deep box with pigtail, adjustable 2G mud ring
PF16TS 4S258	BB216TS Telescoping slider bracket, TP404 1-1/2" deep box with pigtail, 5/8" raised 2G mud ring
PF16TS 4S275	BB216TS Telescoping slider bracket, TP404 1-1/2" deep box with pigtail, 3/4" raised 2G mud ring

- 15"-26" Telescoping Slider Assemblies are available. Replace PF16TS (BB216TS) with PF24TS (BB224TS).
- Refer to the PRE-formance Catalog Numbering System at the end of this section for additional assembly options and configurations.

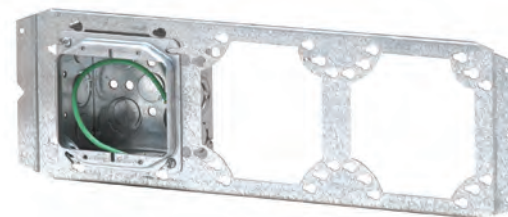
PRE-formance Basic Assemblies

Multi-Mount Assemblies

Multi-Mount Assemblies - all catalog numbers contain a 16" stud spanning Multiple Mount Bracket. Each position may contain a 4" square steel box, mud ring and 8" insulated solid ground wire with ground screw.

Certifications & Compliances:

- UL Listed and cUL Listed
- UL File No. E-324733



Cat. #	Description - Pre-Fabricated Box, Cover, Ground Screw and Lead Assembly
PF3MM 4D58 X X	BB816 Multiple box bracket, 1st Position TP403 2-1/8" deep box with pigtail, 5/8" raised 1G mud ring, 2nd and 3rd positions open
PF3MM 4D75 X X	BB816 Multiple box bracket, 1st Position TP403 2-1/8" deep box with pigtail, 3/4" raised 1G mud ring, 2nd and 3rd positions open
PF3MM 4D258 X X	BB816 Multiple box bracket, 1st Position TP403 2-1/8" deep box with pigtail, 5/8" raised 2G mud ring, 2nd and 3rd positions open
PF3MM 4D275 X X	BB816 Multiple box bracket, 1st Position TP403 2-1/8" deep box with pigtail, 3/4" raised 2G mud ring, 2nd and 3rd positions open
PF3MM 4D58 5DN58 X	BB816 Multiple box bracket, 1st Position TP403 2-1/8" deep box with pigtail, 5/8" raised 1G mud ring, 2nd position TP525 4-11/16" Square 2-1/8 Deep box, 5/8" raised 1G mud ring, no pigtail, 3rd position open
PF3MM 4D75 5DN75 X	BB816 Multiple box bracket, 1st Position TP403 2-1/8" deep box with pigtail, 3/4" raised 1G mud ring, 2nd position TP525 4-11/16" Square 2-1/8 Deep box, 3/4" raised 1G mud ring, no pigtail, 3rd position open
PF3MM 4D258 5DN58 X	B816 Multiple box bracket, 1st Position TP403 2-1/8" deep box with pigtail, 5/8" raised 2G mud ring, 2nd position TP525 4-11/16" Square 2-1/8 Deep box, 5/8" raised 1G mud ring, no pigtail, 3rd position open
PF3MM 4D275 5DN75 X	BB816 Multiple box bracket, 1st Position TP403 2-1/8" deep box with pigtail, 3/4" raised 2G mud ring, 2nd position TP525 4-11/16" Square 2-1/8 Deep box, 3/4" raised 1G mud ring, no pigtail, 3rd position open

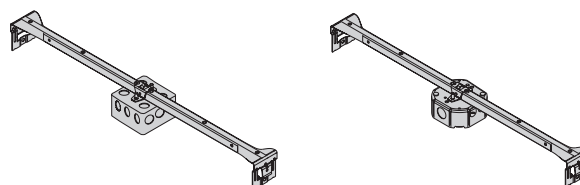
• Refer to the PRE-formance Catalog Numbering System at the end of this section for additional assembly options and configurations.

T-Bar Assemblies

T-Bar Assemblies - all catalog numbers contain BA50 T-Bar fastener, 4" square or octagon box.

Certifications & Compliances:

- UL Listed and cUL Listed
- UL File No. E-324733



Cat. #	Description - Pre-Fabricated Box, Cover, Ground Screw and Lead Assembly
PFBH24 4SN	BA50 Bar hanger, TP404 1-1/2" deep box
PFBH24 4DN	BA50 Bar hanger, TP403 2-1/8" deep box
PFBH24 278N	BA50 Bar hanger, TP278 1-1/2" deep octagon box
PFBH24 292N	BA50 Bar hanger, TP292 2-1/8" deep octagon box

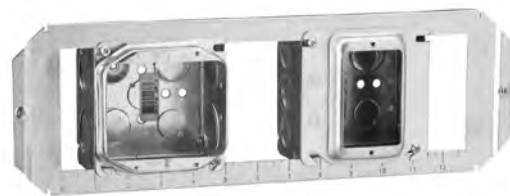
PRE-formance Basic Assemblies

Open Bracket Assemblies

Open Bracket Assemblies - all catalog numbers contain a 16" stud spanning Open Bracket. Each Position may contain a 4" square steel box, mud ring and 8" insulated solid ground wire with ground screw.

Certifications & Compliances:

- UL Listed and cUL Listed
- UL File No. E-324733



Cat. #	Description - Pre-Fabricated Box, Cover, Ground Screw and Lead Assembly
PF16BO 4D58 X X	BB716 Open bracket, 1st Position TP403 2-1/8" deep box with pigtail, 5/8" raised 1G mud ring, 2nd and 3rd positions open
PF16BO 4D75 X X	BB716 Open bracket, 1st Position TP403 2-1/8" deep box with pigtail, 3/4" raised 1G mud ring, 2nd and 3rd positions open
PF16BO 4D258 X X	BB716 Open bracket, 1st Position TP403 2-1/8" deep box with pigtail, 5/8" raised 2G mud ring, 2nd and 3rd positions open
PF16BO 4D275 X X	BB716 Open bracket, 1st Position TP403 2-1/8" deep box with pigtail, 3/4" raised 2G mud ring, 2nd and 3rd positions open
PF16BO 4D58 5DN58 X	BB716 Open bracket, 1st Position TP403 2-1/8" deep box with pigtail, 5/8" raised 1G mud ring, 2nd position TP525 4-11/16" Square 2-1/8 Deep box, 5/8" raised 1G mud ring, no pigtail, 3rd position open
PF16BO 4D75 5DN75 X	BB716 Open bracket, 1st Position TP403 2-1/8" deep box with pigtail, 3/4" raised 1G mud ring, 2nd position TP525 4-11/16" Square 2-1/8 Deep box, 3/4" raised 1G mud ring, no pigtail, 3rd position open
PF16BO 4D258 5DN58 X	BB716 Open bracket, 1st Position TP403 2-1/8" deep box with pigtail, 5/8" raised 2G mud ring, 2nd position TP525 4-11/16" Square 2-1/8 Deep box, 5/8" raised 1G mud ring, no pigtail, 3rd position open
PF16BO 4D275 5DN75 X	BB716 Open bracket, 1st Position TP403 2-1/8" deep box with pigtail, 3/4" raised 2G mud ring, 2nd position TP525 4-11/16" Square 2-1/8 Deep box, 3/4" raised 1G mud ring, no pigtail, 3rd position open

• Refer to the PRE-formance Catalog Numbering System at the end of this section for additional assembly options and configurations.

PRE-formance Custom Assemblies



Uni-Mount Assemblies with Wiring Devices

PRE-formance Uni-Mount Assemblies - all catalog numbers contain a patented Uni-Mount cover (TP31000-37000), 4" square back box, an 8" insulated solid box ground wire, one or two pre-wired Eaton's Wiring Devices with leads, push-in connectors and device protect plates.



Certifications & Compliances:

- UL Listed and cUL Listed
- UL File No. E-324733

Uni-Mount assemblies with wiring devices

- All assemblies are shown with ivory colored devices. At the end of the catalog number, replace the "V" with "W" for white colored device. Other device colors and types are available. Consult factory for details.

Commonly ordered catalog examples are listed below

- See Uni-Mount assembly catalog numbering system at the end of the Uni-Mount assembly pages for more information on how to construct catalog numbers for almost any customer application.

Duplex Receptacles



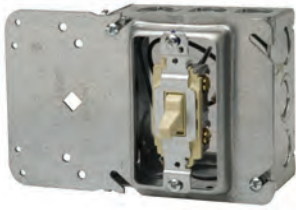
Commercial Grade Receptacle	Industrial Grade Receptacle	Hospital Grade Receptacle	4" Square Steel Back Box	Uni-Mount
Assembly Catalog Number with CR20V Commercial Grade 20A Duplex Receptacle Installed	Assembly Catalog Number with 5362V Industrial Grade 20A Duplex Receptacle Installed	Assembly Catalog Number with 8300V Hospital Grade 20A Duplex Receptacle Installed		
Single 20A Duplex Receptacle				
TP314D C20DV	TP314D I20DV	TP314D H20DV	2-1/8" Deep	5/8" Single Gang
TP314S C20DV	TP314S I20DV	TP314S H20DV	1-1/2" Deep	5/8" Single Gang
TP324D C20DV	TP324D I20DV	TP324D H20DV	2-1/8" Deep	3/4" Single Gang
TP324S C20DV	TP324S I20DV	TP324S H20DV	1-1/2" Deep	3/4" Single Gang
Double 20A Duplex Receptacle				
TP364D C20DDV	TP364D I20DDV	TP364D H20DDV	2-1/8" Deep	5/8" Two Gang
TP364S C20DDV	TP364S I20DDV	TP364S H20DDV	1-1/2" Deep	5/8" Two Gang
TP374D C20DDV	TP374D I20DDV	TP374D H20DDV	2-1/8" Deep	3/4" Two Gang
TP374S C20DDV	TP374S I20DDV	TP374S H20DDV	1-1/2" Deep	3/4" Two Gang

GFCI Receptacles



Specification Grade GFCI Receptacle	Hospital Grade GFCI Receptacle	4" Square Steel Back Box	Uni-Mount
Assembly Catalog Number with VGF20 Specification Grade 20A GFCI Receptacle Installed	Assembly Catalog Number with VGFH20V Hospital Grade 20A GFCI Receptacle Installed		
Single 20A GFCI Receptacle			
TP314D S20GV	TP314D H20GV	2-1/8" Deep	5/8" Single Gang
TP314S S20GV	TP314S H20GV	1-1/2" Deep	5/8" Single Gang
TP324D S20GV	TP324D H20GV	2-1/8" Deep	3/4" Single Gang
TP324S S20GV	TP324S H20GV	1-1/2" Deep	3/4" Single Gang
Double 20A GFCI Receptacle			
TP364D S20GGV	TP364D H20GGV	2-1/8" Deep	5/8" Two Gang
TP364S S20GGV	TP364S H20GGV	1-1/2" Deep	5/8" Two Gang
TP374D S20GGV	TP374D H20GGV	2-1/8" Deep	3/4" Two Gang
TP374S S20GGV	TP374S H20GGV	1-1/2" Deep	3/4" Two Gang

PRE-formance Custom Assemblies



Uni-Mount Assemblies with Wiring Devices

PRE-formance Uni-Mount Assemblies - all catalog numbers contain a patented Uni-Mount cover (TP31000-37000), 4" square back box, 8" insulated solid box ground wire, one or two pre-wired Eaton's Wiring Devices with leads, push-in connectors and device protect plates.

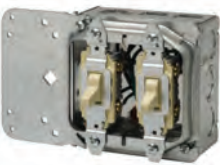
Certifications & Compliances:

- UL Listed and cUL Listed
- UL File No. E-324733

Commonly ordered catalog examples are listed below

- See Uni-Mount assembly catalog numbering system at the end of the Uni-Mount assembly pages for more information on how to construct catalog numbers for almost any customer application.

Single Pole Switch



Commercial Grade Single Pole Switch	Industrial Grade Single Pole Switch		
Assembly Catalog Number with CS120V Commercial Grade 20A Single Pole Switch Installed	Assembly Catalog Number with AH1221V Industrial Grade 20A Single Pole Switch Installed	4" Square Steel Back Box	Uni-Mount
Single 20A Single Pole Switch			
TP314D C20SPV	TP314D I20SPV	2-1/8" Deep	5/8" Single Gang
TP314S C20SPV	TP314S I20SPV	1-1/2" Deep	5/8" Single Gang
TP324D C20SPV	TP324D I20SPV	2-1/8" Deep	3/4" Single Gang
TP324S C20SPV	TP324S I20SPV	1-1/2" Deep	3/4" Single Gang
Double 20A Single Pole Switch			
TP364D C20SPSPV	TP364D I20SPSPV	2-1/8" Deep	5/8" Two Gang
TP364S C20SPSPV	TP364S I20SPSPV	1-1/2" Deep	5/8" Two Gang
TP374D C20SPSPV	TP374D I20SPSPV	2-1/8" Deep	3/4" Two Gang
TP374S C20SPSPV	TP374S I20SPSPV	1-1/2" Deep	3/4" Two Gang

Three Way Switch



Commercial Grade Three Way Switch	Industrial Grade Three Way Switch		
Assembly Catalog Number with CS320V Commercial Grade 20A Three Way Switch Installed	Assembly Catalog Number with AH1223V Industrial Grade 20A Three Way Switch Installed	4" Square Steel Back Box	Uni-Mount
Single 20A Three Way Switch			
TP314D C203WV	TP314D I203WV	2-1/8" Deep	5/8" Single Gang
TP314S C203WV	TP314S I203WV	1-1/2" Deep	5/8" Single Gang
TP324D C203WV	TP324D I203WV	2-1/8" Deep	3/4" Single Gang
TP324S C203WV	TP324S I203WV	1-1/2" Deep	3/4" Single Gang
Double 20A Three Way Switch			
TP364D C203W3WV	TP364D I203W3WV	2-1/8" Deep	5/8" Two Gang
TP364S C203W3WV	TP364S I203W3WV	1-1/2" Deep	5/8" Two Gang
TP374D C203W3WV	TP374D I203W3WV	2-1/8" Deep	3/4" Two Gang
TP374S C203W3WV	TP374S I203W3WV	1-1/2" Deep	3/4" Two Gang

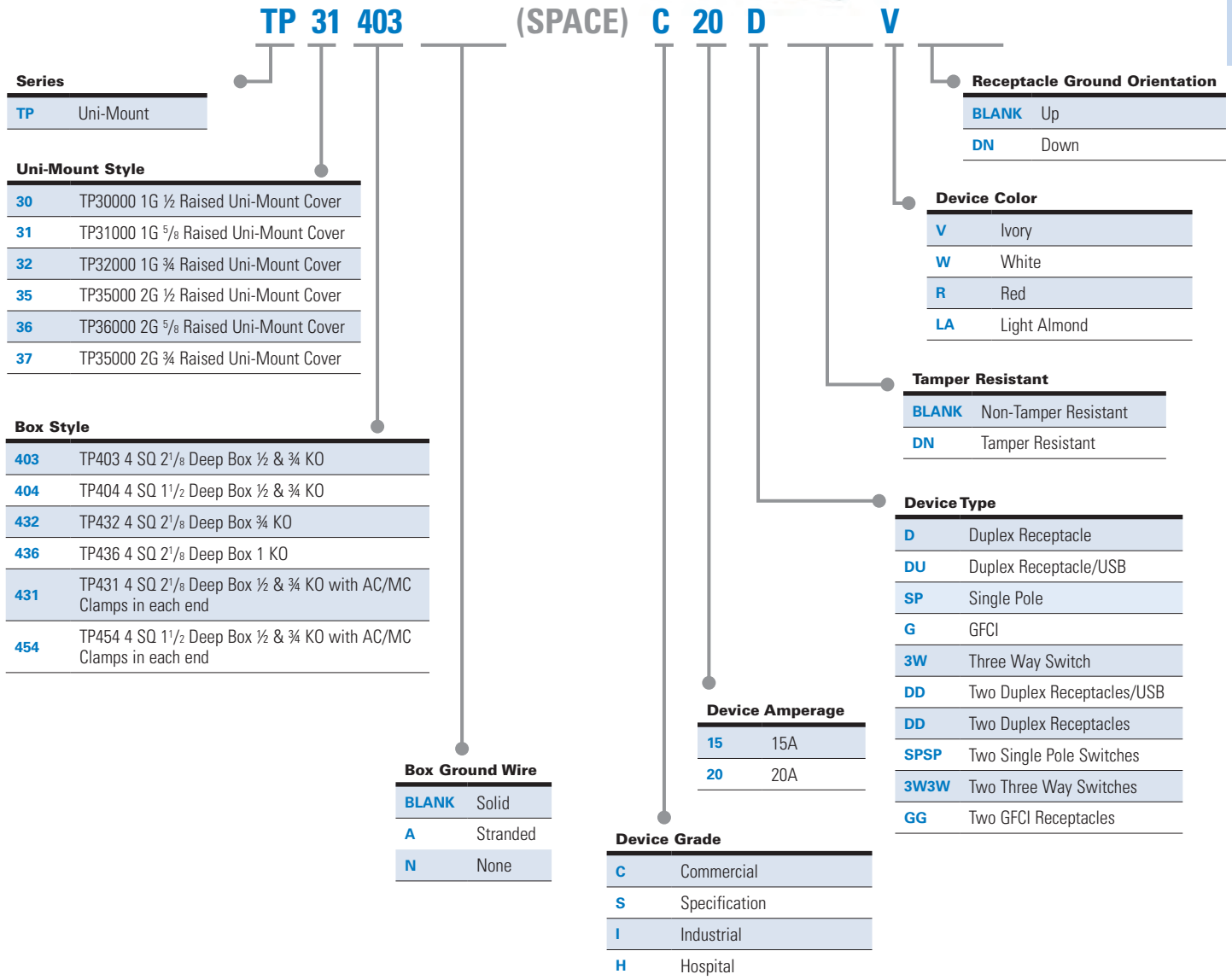
- Other box types, device colors, mud ring depths, brackets and assembly configurations are available. Consult factory for details.
- To change the color of device from ivory (as shown) to white, substitute V (Ivory) with W (White). For ex. TP314D C20DV becomes TP314D C20DW.
- All receptacles are shipped standard ground up. Add suffix DN for ground down.
- All assemblies shipped standard with metal device protect plates.
- Pre-installed connectors available on all assembly types. Consult factory for details.

PRE-formance Catalog Numbering System

For Uni-Mount Assemblies with Wiring Devices



Part number example
TP31403 C20DV



Standard Eaton's Wiring Devices used in PRE-formance Assemblies

Eaton's Crouse-Hinds Wiring Device Nomenclature (without color suffix)	Eaton's Wiring Device Catalog Number used (shown without color suffix)	Description
C20D	CR20	Commercial Grade 20A Duplex Receptacle
I20D	5362	Industrial Grade 20A Duplex Receptacle
H20D	8300	Hospital Grade 20A Duplex Receptacle
S20G	VGf20	Specification Grade 20A GFCI Receptacle
H20G	VGfH20	Hospital Grade 20A GFCI Receptacle
C20SP	CS120	Commercial Grade 20A Single Pole Switch
I20SP	AH1221	Industrial Grade 20A Single Pole Switch
C203W	CS320	Commercial Grade 20A Three Way Switch
I203W	AH1223	Industrial Grade 20A Three Way Switch

PRE-formance Custom Assemblies



Single Sided Assemblies with Wiring Devices

Single Sided Assemblies - all catalog numbers contain a single sided bracket (BB4-23 for 3-1/2" and 2-1/2" studs), 4" square box, 8" insulated solid box ground wire, one or two pre-wired Eaton's Wiring Devices with leads, push-in connectors and device protect plates.

Certifications & Compliances:

- UL Listed and cUL Listed
- UL File No. E-324733

Single Sided Assemblies with wiring devices

- All assemblies are shown with ivory colored devices. At the end of the catalog number, replace the "V" with "W" for white colored device. Other device colors and types are available. Consult factory for details. Double sided direct mount assemblies are also available. Substitute PFH3 in the catalog number with PF3DS (BB73 double sided bracket).
- 4" and 6" far side supports are available. Replace PFH3 (for 2-1/2" and 3-1/2" studs) with PFH4 (4") (BB44) or PFH6 (6") (BB46).

Commonly ordered catalog examples are listed below

- See assembly catalog numbering system at the end of this section for more information on how to construct catalog numbers for almost any customer application.

Duplex Receptacles



Commercial Grade Receptacle	Industrial Grade Receptacle	Hospital Grade Receptacle	4" Square Steel Back Box	Mud Ring
Assembly Catalog Number with CR20V Commercial Grade 20A Duplex Receptacle Installed	Assembly Catalog Number with 5362V Industrial Grade 20A Duplex Receptacle Installed	Assembly Catalog Number with 8300V Hospital Grade 20A Duplex Receptacle Installed		
Single 20A Duplex Receptacle				
PFH3 4D58C20DV	PFH3 4D58I20DV	PFH3 4D58H20DV	2-1/8" Deep	5/8" Single Gang
PFH3 4S58C20DV	PFH3 4S58I20DV	PFH3 4S58H20DV	1-1/2" Deep	5/8" Single Gang
PFH3 4D75C20DV	PFH3 4D75I20DV	PFH3 4D75H20DV	2-1/8" Deep	3/4" Single Gang
PFH3 4S75C20DV	PFH3 4S75I20DV	PFH3 4S75H20DV	1-1/2" Deep	3/4" Single Gang
Double 20A Duplex Receptacle				
PFH3 4D258C20DDV	PFH3 4D258I20DDV	PFH3 4D258H20DDV	2-1/8" Deep	5/8" Two Gang
PFH3 4S258C20DDV	PFH3 4S258I20DDV	PFH3 4S258H20DDV	1-1/2" Deep	5/8" Two Gang
PFH3 4D275C20DDV	PFH3 4D275I20DDV	PFH3 4D275H20DDV	2-1/8" Deep	3/4" Two Gang
PFH3 4S275C20DDV	PFH3 4S275I20DDV	PFH3 4S275H20DDV	1-1/2" Deep	3/4" Two Gang

GFCI Receptacles



Specification Grade GFCI Receptacle	Hospital Grade GFCI Receptacle	4" Square Steel Back Box	Mud Ring
Assembly Catalog Number with VGF20 Specification Grade 20A GFCI Receptacle Installed	Assembly Catalog Number with VGFH20V Hospital Grade 20A GFCI Receptacle Installed		
Single 20A GFCI Receptacle			
PFH3 4D58S20GV	PFH3 4D58H20GV	2-1/8" Deep	5/8" Single Gang
PFH3 4S58S20GV	PFH3 4S58H20GV	1-1/2" Deep	5/8" Single Gang
PFH3 4D75S20GV	PFH3 4D75H20GV	2-1/8" Deep	3/4" Single Gang
PFH3 4S75S20GV	PFH3 4S75H20GV	1-1/2" Deep	3/4" Single Gang
Double 20A GFCI Receptacle			
PFH3 4D258S20GGV	PFH3 4D258H20GGV	2-1/8" Deep	5/8" Two Gang
PFH3 4S258S20GGV	PFH3 4S258H20GGV	1-1/2" Deep	5/8" Two Gang
PFH3 4D275S20GGV	PFH3 4D275H20GGV	2-1/8" Deep	3/4" Two Gang
PFH3 4S275S20GGV	PFH3 4S275H20GGV	1-1/2" Deep	3/4" Two Gang

PRE-formance Custom Assemblies



Single Sided Assemblies with Wiring Devices

Single Sided Assemblies - all catalog numbers contain a single sided bracket (BB4-23 for 3-1/2" and 2-1/2" studs), 4" square box, 8" insulated solid box ground wire, one or two pre-wired Eaton's Wiring Devices with leads, push-in connectors and device protect plates.

Certifications & Compliances:

- UL Listed and cUL Listed
- UL File No. E-324733

Commonly ordered catalog examples are listed below

- See assembly catalog numbering system at the end of this section for more information on how to construct catalog numbers for almost any customer application.

Single Pole Switch



Commercial Grade Single Pole Switch	Industrial Grade Single Pole Switch		
Assembly Catalog Number with CS120V Commercial Grade 20A Single Pole Switch Installed	Assembly Catalog Number with AH1221V Industrial Grade 20A Single Pole Switch Installed	4" Square Steel Back Box	Mud Ring
Single 20A Single Pole Switch			
PFH3 4D58C20SPV	PFH3 4D58I20SPV	2-1/8" Deep	5/8" Single Gang
PFH3 4S58C20SPV	PFH3 4S58I20SPV	1-1/2" Deep	5/8" Single Gang
PFH3 4D75C20SPV	PFH3 4D75I20SPV	2-1/8" Deep	3/4" Single Gang
PFH3 4S75C20SPV	PFH3 4S75I20SPV	1-1/2" Deep	3/4" Single Gang
Double 20A Single Pole Switch			
PFH3 4D258C20SPSPV	PFH3 4D258I20SPSPV	2-1/8" Deep	5/8" Two Gang
PFH3 4S258C20SPSPV	PFH3 4S258I20SPSPV	1-1/2" Deep	5/8" Two Gang
PFH3 4D275C20SPSPV	PFH3 4D275I20SPSPV	2-1/8" Deep	3/4" Two Gang
PFH3 4S275C20SPSPV	PFH3 4S275I20SPSPV	1-1/2" Deep	3/4" Two Gang

Three Way Switch



Commercial Grade Three Way Switch	Industrial Grade Three Way Switch		
Assembly Catalog Number with CS320V Commercial Grade 20A Three Way Switch Installed	Assembly Catalog Number with AH1223V Industrial Grade 20A Three Way Switch Installed	4" Square Steel Back Box	Mud Ring
Single 20A Three Way Switch			
PFH3 4D58C203WV	PFH3 4D58I203WV	2-1/8" Deep	5/8" Single Gang
PFH3 4S58C203WV	PFH3 4S58I203WV	1-1/2" Deep	5/8" Single Gang
PFH3 4D75C203WV	PFH3 4D75I203WV	2-1/8" Deep	3/4" Single Gang
PFH3 4S75C203WV	PFH3 4S75I203WV	1-1/2" Deep	3/4" Single Gang
Double 20A Three Way Switch			
PFH3 4D258C203W3WV	PFH3 4D258I203W3WV	2-1/8" Deep	5/8" Two Gang
PFH3 4S258C203W3WV	PFH3 4S258I203W3WV	1-1/2" Deep	5/8" Two Gang
PFH3 4D275C203W3WV	PFH3 4D275I203W3WV	2-1/8" Deep	3/4" Two Gang
PFH3 4S275C203W3WV	PFH3 4S275I203W3WV	1-1/2" Deep	3/4" Two Gang

- Other box types, device colors, mud ring depths, brackets and assembly configurations are available. Consult factory for details.
- To change the color of device from ivory (as shown) to white, substitute V (Ivory) with W (White). For ex. PFH3 4D58C20DV becomes PFH3 4D58C20DW.
- All receptacles are shipped standard ground up. Add suffix DN for ground down.
- All assemblies shipped standard with metal device protect plates.
- Pre-installed connectors available on all assembly types. Consult factory for details.

PRE-formance Custom Assemblies



Double Sided Assemblies with Wiring Devices

Double Sided Assemblies - all catalog numbers contain a double sided bracket (BB73-23 for 3-1/2" and 2-1/2" studs), 4" square box, 8" insulated solid box ground wire, one or two pre-wired Eaton's Wiring Devices with leads, push-in connectors and device protect plates.

Certifications & Compliances:

- UL Listed and cUL Listed
- UL File No. E-324733

Double Sided Assemblies with wiring devices

- All assemblies are shown with ivory colored devices. At the end of the catalog number, replace the "V" with "W" for white colored device. Other device colors and types are available. Consult factory for details.
- 4" and 6" far side supports are available. Replace PF3DS (for 2-1/2" and 3-1/2" studs) with PF4DS (4") (BB74) or PF6DS (6") (BB76).

Commonly ordered catalog examples are listed below

- See assembly catalog numbering system at the end of this section for more information on how to construct catalog numbers for almost any customer application.

Duplex Receptacles



Commercial Grade Receptacle	Industrial Grade Receptacle	Hospital Grade Receptacle	4" Square Steel Back Box	Mud Ring
Assembly Catalog Number with CR20V Commercial Grade 20A Duplex Receptacle Installed	Assembly Catalog Number with 5362V Industrial Grade 20A Duplex Receptacle Installed	Assembly Catalog Number with 8300V Hospital Grade 20A Duplex Receptacle Installed		
Single 20A Duplex Receptacle				
PF3DS 4D58C20DV	PF3DS 4D58I20DV	PF3DS 4D58H20DV	2-1/8" Deep	5/8" Single Gang
PF3DS 4S58C20DV	PF3DS 4S58I20DV	PF3DS 4S58H20DV	1-1/2" Deep	5/8" Single Gang
PF3DS 4D75C20DV	PF3DS 4D75I20DV	PF3DS 4D75H20DV	2-1/8" Deep	3/4" Single Gang
PF3DS 4S75C20DV	PF3DS 4S75I20DV	PF3DS 4S75H20DV	1-1/2" Deep	3/4" Single Gang
Double 20A Duplex Receptacle				
PF3DS 4D258C20DDV	PF3DS 4D258I20DDV	PF3DS 4D258H20DDV	2-1/8" Deep	5/8" Two Gang
PF3DS 4S258C20DDV	PF3DS 4S258I20DDV	PF3DS 4S258H20DDV	1-1/2" Deep	5/8" Two Gang
PF3DS 4D275C20DDV	PF3DS 4D275I20DDV	PF3DS 4D275H20DDV	2-1/8" Deep	3/4" Two Gang
PF3DS 4S275C20DDV	PF3DS 4S275I20DDV	PF3DS 4S275H20DDV	1-1/2" Deep	3/4" Two Gang

GFCI Receptacles



Specification Grade GFCI Receptacle	Hospital Grade GFCI Receptacle	4" Square Steel Back Box	Mud Ring
Assembly Catalog Number with VGF20 Specification Grade 20A GFCI Receptacle Installed	Assembly Catalog Number with VGFH20V Hospital Grade 20A GFCI Receptacle Installed		
Single 20A GFCI Receptacle			
PF3DS 4D58S20GV	PF3DS 4D58H20GV	2-1/8" Deep	5/8" Single Gang
PF3DS 4S58S20GV	PF3DS 4S58H20GV	1-1/2" Deep	5/8" Single Gang
PF3DS 4D75S20GV	PF3DS 4D75H20GV	2-1/8" Deep	3/4" Single Gang
PF3DS 4S75S20GV	PF3DS 4S75H20GV	1-1/2" Deep	3/4" Single Gang
Double 20A GFCI Receptacle			
PF3DS 4D258S20GGV	PF3DS 4D258H20GGV	2-1/8" Deep	5/8" Two Gang
PF3DS 4S258S20GGV	PF3DS 4S258H20GGV	1-1/2" Deep	5/8" Two Gang
PF3DS 4D275S20GGV	PF3DS 4D275H20GGV	2-1/8" Deep	3/4" Two Gang
PF3DS 4S275S20GGV	PF3DS 4S275H20GGV	1-1/2" Deep	3/4" Two Gang

PRE-formance Custom Assemblies



Double Sided Assemblies with Wiring Devices

Double Sided Assemblies - all catalog numbers contain a double sided bracket (BB73-23 for 3-1/2" and 2-1/2" studs), 4" square box, 8" insulated solid box ground wire, one or two pre-wired Eaton's Wiring Devices with leads, push-in connectors and device protect plates.

Certifications & Compliances:

- UL Listed and cUL Listed
- UL File No. E-324733

Commonly ordered catalog examples are listed below

- See assembly catalog numbering system at the end of this section for more information on how to construct catalog numbers for almost any customer application.

Single Pole Switch



Three Way Switch



Commercial Grade Single Pole Switch	Industrial Grade Single Pole Switch		
Assembly Catalog Number with CS120V Commercial Grade 20A Single Pole Switch Installed	Assembly Catalog Number with AH1221V Industrial Grade 20A Single Pole Switch Installed	4" Square Steel Back Box	Mud Ring
Single 20A Single Pole Switch			
PF3DS 4D58C20SPV	PF3DS 4D58I20SPV	2-1/8" Deep	5/8" Single Gang
PF3DS 4S58C20SPV	PF3DS 4S58I20SPV	1-1/2" Deep	5/8" Single Gang
PF3DS 4D75C20SPV	PF3DS 4D75I20SPV	2-1/8" Deep	3/4" Single Gang
PF3DS 4S75C20SPV	PF3DS 4S75I20SPV	1-1/2" Deep	3/4" Single Gang
Double 20A Single Pole Switch			
PF3DS 4D258C20SPSPV	PF3DS 4D258I20SPSPV	2-1/8" Deep	5/8" Two Gang
PF3DS 4S258C20SPSPV	PF3DS 4S258I20SPSPV	1-1/2" Deep	5/8" Two Gang
PF3DS 4D275C20SPSPV	PF3DS 4D275I20SPSPV	2-1/8" Deep	3/4" Two Gang
PF3DS 4S275C20SPSPV	PF3DS 4S275I20SPSPV	1-1/2" Deep	3/4" Two Gang
Commercial Grade Three Way Switch	Industrial Grade Three Way Switch		
Assembly Catalog Number with CS320V Commercial Grade 20A Three Way Switch Installed	Assembly Catalog Number with AH1223V Industrial Grade 20A Three Way Switch Installed	4" Square Steel Back Box	Mud Ring
Single 20A Three Way Switch			
PF3DS 4D58C203WV	PF3DS 4D58I203WV	2-1/8" Deep	5/8" Single Gang
PF3DS 4S58C203WV	PF3DS 4S58I203WV	1-1/2" Deep	5/8" Single Gang
PF3DS 4D75C203WV	PF3DS 4D75I203WV	2-1/8" Deep	3/4" Single Gang
PF3DS 4S75C203WV	PF3DS 4S75I203WV	1-1/2" Deep	3/4" Single Gang
Double 20A Three Way Switch			
PF3DS 4D258C203W3WV	PF3DS 4D258I203W3WV	2-1/8" Deep	5/8" Two Gang
PF3DS 4S258C203W3WV	PF3DS 4S258I203W3WV	1-1/2" Deep	5/8" Two Gang
PF3DS 4D275C203W3WV	PF3DS 4D275I203W3WV	2-1/8" Deep	3/4" Two Gang
PF3DS 4S275C203W3WV	PF3DS 4S275I203W3WV	1-1/2" Deep	3/4" Two Gang

- Other box types, device colors, mud ring depths, brackets and assembly configurations are available. Consult factory for details.
- To change the color of device from ivory (as shown) to white, substitute V (Ivory) with W (White). For ex. PF3DS 4D58C20DV becomes PF3DS 4D58C20DW.
- All receptacles are shipped standard ground up. Add suffix DN for ground down.
- All assemblies shipped standard with metal device protect plates.
- Pre-installed connectors available on all assembly types. Consult factory for details.

PRE-formance Custom Assemblies

Telescoping Slider Assemblies with Wiring Devices

Telescoping Slider Assemblies - all catalog numbers contain a Telescoping Slider Bracket (BB216TS 11"-18"), 4" square traditional closed back box, 8" insulated stranded box ground wire with ground screw, one or two pre-wired Eaton's Wiring Devices with leads, push-in connectors, and device protect plates.



Certifications & Compliances:

- UL Listed and cUL Listed
- UL File No. E-324733

Commonly ordered catalog examples are listed below

- See assembly catalog numbering system at the end of this section for more information on how to construct catalog numbers for almost any customer application.

Duplex Receptacles



Commercial Grade Receptacle	Industrial Grade Receptacle	Hospital Grade Receptacle	4" Square Steel Back Box	Mud Ring
Assembly Catalog Number with CR20V Commercial Grade 20A Duplex Receptacle Installed	Assembly Catalog Number with 5362V Industrial Grade 20A Duplex Receptacle Installed	Assembly Catalog Number with 8300V Hospital Grade 20A Duplex Receptacle Installed		
Single 20A Duplex Receptacle				
PF16TS 4DA58C20DV	PF16TS 4DA58I20DV	PF16TS 4DA58H20DV	2-1/8" Deep	5/8" Single Gang
PF16TS 4SA58C20DV	PF16TS 4SA58I20DV	PF16TS 4SA58H20DV	1-1/2" Deep	5/8" Single Gang
PF16TS 4DA75C20DV	PF16TS 4DA75I20DV	PF16TS 4DA75H20DV	2-1/8" Deep	3/4" Single Gang
PF16TS 4SA75C20DV	PF16TS 4SA75I20DV	PF16TS 4SA75H20DV	1-1/2" Deep	3/4" Single Gang
Double 20A Duplex Receptacle				
PF16TS 4DA258C20DDV	PF16TS 4DA258I20DDV	PF16TS 4DA258H20DDV	2-1/8" Deep	5/8" Two Gang
PF16TS 4SA258C20DDV	PF16TS 4SA258I20DDV	PF16TS 4SA258H20DDV	1-1/2" Deep	5/8" Two Gang
PF16TS 4DA275C20DDV	PF16TS 4DA275I20DDV	PF16TS 4DA275H20DDV	2-1/8" Deep	3/4" Two Gang
PF16TS 4SA275C20DDV	PF16TS 4SA275I20DDV	PF16TS 4SA275H20DDV	1-1/2" Deep	3/4" Two Gang

GFCI Receptacles



Specification Grade GFCI Receptacle	Hospital Grade GFCI Receptacle	4" Square Steel Back Box	Mud Ring
Assembly Catalog Number with VGF20 Specification Grade 20A GFCI Receptacle Installed	Assembly Catalog Number with VGFH20V Hospital Grade 20A GFCI Receptacle Installed		
Single 20A GFCI Receptacle			
PF16TS 4DA58S20GV	PF16TS 4DA58H20GV	2-1/8" Deep	5/8" Single Gang
PF16TS 4SA58S20GV	PF16TS 4SA58H20GV	1-1/2" Deep	5/8" Single Gang
PF16TS 4DA75S20GV	PF16TS 4DA75H20GV	2-1/8" Deep	3/4" Single Gang
PF16TS 4SA75S20GV	PF16TS 4SA75H20GV	1-1/2" Deep	3/4" Single Gang
Double 20A GFCI Receptacle			
PF16TS 4DA258S20GGV	PF16TS 4DA258H20GGV	2-1/8" Deep	5/8" Two Gang
PF16TS 4SA258S20GGV	PF16TS 4SA258H20GGV	1-1/2" Deep	5/8" Two Gang
PF16TS 4DA275S20GGV	PF16TS 4DA275H20GGV	2-1/8" Deep	3/4" Two Gang
PF16TS 4SA275S20GGV	PF16TS 4SA275H20GGV	1-1/2" Deep	3/4" Two Gang

PRE-formance Custom Assemblies

Telescoping Slider Assemblies with Wiring Devices

Telescoping Slider Assemblies - all catalog numbers contain a Telescoping Slider Bracket (BB216TS 11"-18"), 4" square traditional closed back box, 8" insulated stranded box ground wire with ground screw, one or two pre-wired Eaton's Wiring Devices with leads, push-in connectors, and device protect plates.



Certifications & Compliances:

- UL Listed and cUL Listed
- UL File No. E-324733

Commonly ordered catalog examples are listed below

- See assembly catalog numbering system at the end of this section for more information on how to construct catalog numbers for almost any customer application.

Single Pole Switch



Commercial Grade Single Pole Switch	Industrial Grade Single Pole Switch		
Assembly Catalog Number with CS120V Commercial Grade 20A Single Pole Switch Installed	Assembly Catalog Number with AH1221V Industrial Grade 20A Single Pole Switch Installed	4" Square Steel Back Box	Mud Ring
Single 20A Single Pole Switch			
PF16TS 4DA58C20SPV	PF16TS 4DA58I20SPV	2-1/8" Deep	5/8" Single Gang
PF16TS 4SA58C20SPV	PF16TS 4SA58I20SPV	1-1/2" Deep	5/8" Single Gang
PF16TS 4DA75C20SPV	PF16TS 4DA75I20SPV	2-1/8" Deep	3/4" Single Gang
PF16TS 4SA75C20SPV	PF16TS 4SA75I20SPV	1-1/2" Deep	3/4" Single Gang
Double 20A Single Pole Switch			
PF16TS 4DA258C20SPSPV	PF16TS 4DA258I20SPSPV	2-1/8" Deep	5/8" Two Gang
PF16TS 4SA258C20SPSPV	PF16TS 4SA258I20SPSPV	1-1/2" Deep	5/8" Two Gang
PF16TS 4DA275C20SPSPV	PF16TS 4DA275I20SPSPV	2-1/8" Deep	3/4" Two Gang
PF16TS 4SA275C20SPSPV	PF16TS 4SA275I20SPSPV	1-1/2" Deep	3/4" Two Gang

Three Way Switch



Commercial Grade Three Way Switch	Industrial Grade Three Way Switch		
Assembly Catalog Number with CS320V Commercial Grade 20A Three Way Switch Installed	Assembly Catalog Number with AH1223V Industrial Grade 20A Three Way Switch Installed	4" Square Steel Back Box	Mud Ring
Single 20A Three Way Switch			
PF16TS 4DA58C203WV	PF16TS 4DA58I203WV	2-1/8" Deep	5/8" Single Gang
PF16TS 4SA58C203WV	PF16TS 4SA58I203WV	1-1/2" Deep	5/8" Single Gang
PF16TS 4DA75C203WV	PF16TS 4DA75I203WV	2-1/8" Deep	3/4" Single Gang
PF16TS 4SA75C203WV	PF16TS 4SA75I203WV	1-1/2" Deep	3/4" Single Gang
Double 20A Three Way Switch			
PF16TS 4DA258C203W3WV	PF16TS 4DA258I203W3WV	2-1/8" Deep	5/8" Two Gang
PF16TS 4SA258C203W3WV	PF16TS 4SA258I203W3WV	1-1/2" Deep	5/8" Two Gang
PF16TS 4DA275C203W3WV	PF16TS 4DA275I203W3WV	2-1/8" Deep	3/4" Two Gang
PF16TS 4SA275C203W3WV	PF16TS 4SA275I203W3WV	1-1/2" Deep	3/4" Two Gang

- Other box types, device colors, mud ring depths, brackets and assembly configurations are available. Consult factory for details.
- To change the color of device from ivory (as shown) to white, substitute V (Ivory) with W (White). For ex. PF16TS 4DAC20DV becomes PF16TS 4DAC20DW.
- All receptacles are shipped standard ground up. Add suffix DN for ground down.
- All assemblies shipped standard with metal device protect plates.
- Pre-installed connectors available on all assembly types. Consult factory for details.
- Telescoping Slider Bracket Assemblies are shipped with traditional closed back box, ground screw and stranded leads on box and devices.
- Device leads and push-in connectors are left inside the box and will not be pulled out of knockouts prior to shipment unless specified by customer.

PRE-formance Custom Assemblies



Floor Mount Assemblies with Wiring Devices

Floor Mount Assemblies - all catalog numbers contain a floor mount bracket (BBF18) which positions device at 18" on center, 4" square box, 8" insulated solid box ground wire with one or two pre-wired Eaton's Wiring Devices with leads, push-in connectors and device protect plates.

Certifications & Compliances:

- UL Listed and cUL Listed
- UL File No. E-324733

Floor Mount assemblies with wiring devices

- All assemblies are shown with ivory colored devices. At the end of the catalog number, replace the "V" with "W" for white colored device. Other device colors and types are available. Consult factory for details.

Commonly ordered catalog examples are listed below

- See assembly catalog numbering system at the end of this section for more information on how to construct catalog numbers for almost any customer application

Single Receptacles



Commercial Grade Receptacle	Industrial Grade Receptacle	Hospital Grade Receptacle		
Assembly Catalog Number with CR20V Commercial Grade 20A Duplex Receptacle Installed	Assembly Catalog Number with 5362V Industrial Grade 20A Duplex Receptacle Installed	Assembly Catalog Number with 8300V Hospital Grade 20A Duplex Receptacle Installed	4" Square Steel Back Box	Mud Ring
Single 20A Duplex Receptacle				
PF18FM 4D58C20DV	PF18FM 4D58I20DV	PF18FM 4D58H20DV	2-1/8" Deep	5/8" Single Gang
PF18FM 4S58C20DV	PF18FM 4S58I20DV	PF18FM 4S58H20DV	1-1/2" Deep	5/8" Single Gang
PF18FM 4D75C20DV	PF18FM 4D75I20DV	PF18FM 4D75H20DV	2-1/8" Deep	3/4" Single Gang
PF18FM 4S75C20DV	PF18FM 4S75I20DV	PF18FM 4S75H20DV	1-1/2" Deep	3/4" Single Gang
Double 20A Duplex Receptacle				
PF18FM 4D258C20DDV	PF18FM 4D258I20DDV	PF18FM 4D258H20DDV	2-1/8" Deep	5/8" Two Gang
PF18FM 4S258C20DDV	PF18FM 4S258I20DDV	PF18FM 4S258H20DDV	1-1/2" Deep	5/8" Two Gang
PF18FM 4D275C20DDV	PF18FM 4D275I20DDV	PF18FM 4D275H20DDV	2-1/8" Deep	3/4" Two Gang
PF18FM 4S275C20DDV	PF18FM 4S275I20DDV	PF18FM 4S275H20DDV	1-1/2" Deep	3/4" Two Gang

- Other box types, device colors, mud ring depths, brackets and assembly configurations are available. Consult factory for details.
- To change the color of device from ivory (as shown) to white, substitute V with W (White). For ex. PF18FM 4D58C20DV becomes PF18FM 4D58C20DW.
- All receptacles are shipped standard ground up. Add suffix DN for ground down.
- All assemblies shipped standard with metal device protect plates.
- Pre-installed connectors available on all assembly types. Consult factory for details.

PRE-formance Custom Assemblies

Multi-Mount Assemblies with Wiring Devices

Multi-Mount Assemblies - all catalog numbers contain a multiple mount bracket (available in either 16" stud spanning or 24" stud spanning). Each position may contain an outlet box, 8" insulated solid box ground wire with ground screw, one or two pre-wired Eaton's Wiring Devices with leads, push-in connectors and device protect plates.

Certifications & Compliances:

- UL Listed and cUL Listed
- UL File No. E-324733



Commonly ordered catalog examples are listed below

- See assembly catalog numbering system at the end of this section for more information on how to construct catalog numbers for almost any customer application.



PF3MM 4D58C20DV 5D58 X

- 3MM Bracket - BB816 3-hole Multiple-Mount Bracket for 16" stud spacing
- 4MM Bracket (not shown) - BB824 4 hole Multiple-Mount Bracket for 24" stud spacing



PF16BO 4D58C20DV X 4D258C20DDV

- 16BO Bracket - BB716 Open Mount Bracket for 16" stud spacing
- 24BO Bracket (not shown) - BB724 Open Mount Bracket for 24" stud spacing

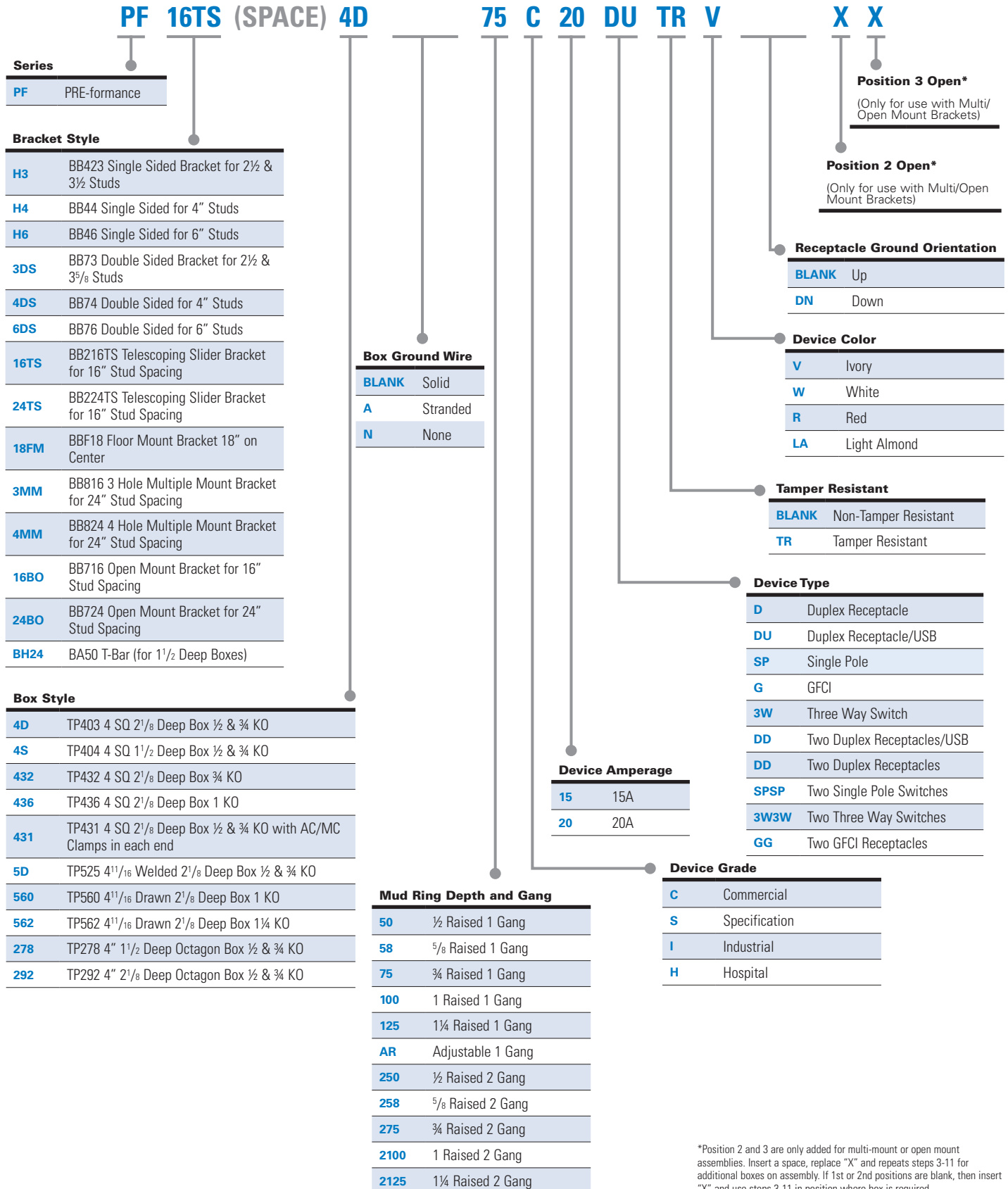
Commonly Ordered Catalog Numbers	Description
PF3MM 4D58C20DV 5D58 X	Assembly - BB816 Multiple Box Bracket, 4" square box with ground screw, lead and back cover, TP489 5/8" raise 1G mud ring, pre-wired CR20V 20A commercial duplex receptacle ivory with leads and push-in connectors and protect plate (not shown), 2nd position TP525 4-11/16" box, TP579 4-11/16" 5/8 raise 1G mud ring, no ground wire
PF16BO 4D58C20DV X 4D58C20DDV	Assembly - BB716 Open Bracket, 4" square back box with ground screw, lead and back cover, TP489 5/8" raise 1G mud ring, pre-wired CR20V 20A commercial duplex receptacle ivory with leads, push-in connectors and protect plate, 2nd position open, 3rd position 4" square box with ground screw, lead and back cover, TP499 5/8" raise 2G mud ring, two pre-wired CR20v 20A commercial duplex receptacles ivory with leads, push-in connectors and protect plates

- Other box types, device colors, mud ring depths, brackets and assembly configurations are available. Consult factory for details.
- To change the color of device from ivory (as shown) to white, substitute V (Ivory) with W (White).
- All receptacles are shipped standard ground up. Add suffix DN for ground down.
- All assemblies shipped standard with metal device protect plates.
- Pre-installed connectors available on all assembly types. Consult factory for details.

PRE-formance Catalog Numbering System

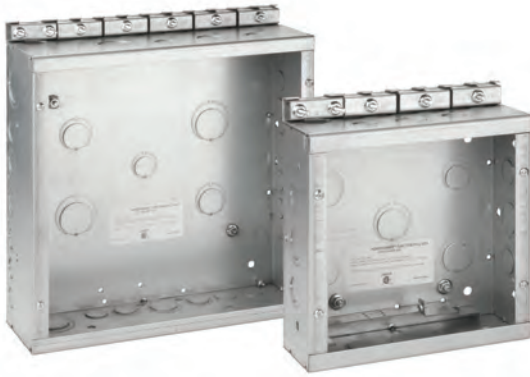
Part number example

PF16TS 4D75C20DU TR V X X



*Position 2 and 3 are only added for multi-mount or open mount assemblies. Insert a space, replace "X" and repeats steps 3-11 for additional boxes on assembly. If 1st or 2nd positions are blank, then insert "X" and use steps 3-11 in position where box is required.

HomeRunner Boxes



Applications:

Crouse-Hinds HomeRunner™ Junction Boxes are designed specifically for commercial construction applications to provide a spacious, flexible junction box for terminating home runs and other electrical wiring. Its patented clamping design and flexibility make it the most convenient labor savings junction box available.

Features:

- Designed and approved for use with AC, MC, MCI-A, NM or EMT
- Patented clamping feature eliminates the need for field punching/drilling of KOs and installation of connectors
- Standard surface or flush cover options - eliminates the need for custom covers
- Multiple mounting holes and knockouts for installation flexibility
- Optional stud bracket for direct mounting to steel or wood studs
- Kick stand far side support available with HR080803
- Available in 2 sizes to match customer requirements and preferences
- Third party certified for US and Canada

Standard Materials:

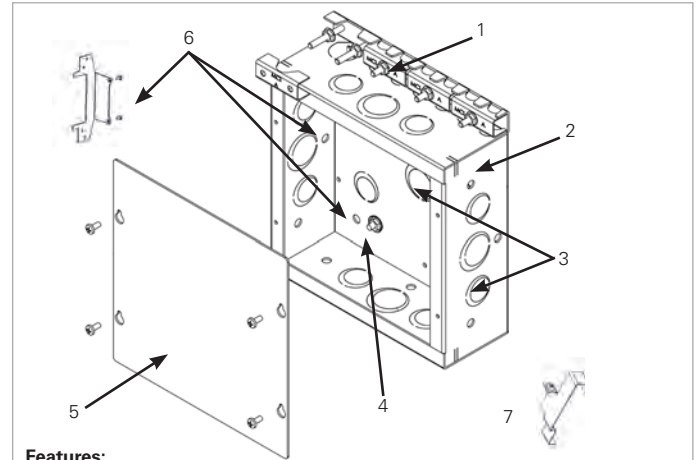
- Enclosure and cover - pre-galvanized steel
- Hardware - zinc plated steel

Certifications & Compliances:

- For US and Canada: CSA File #248782
- Certified to UL50 and UL514B and CSA C22.2, No. 18.3-04 and No. 40-M1989

HomeRunner Ordering Information

Cat. #	Description	Dimensions	Knockouts	Wire Fill	Built In Clamps	Cubic Vol.	Unit Qty.	Wt. Per 100
HR080803	8" x 8" Box	8"H x 8"W x 3"D	(10) ½" & ¾" eccentric, (7) ¾" & 1" eccentric	(7) 14 AWG (6) 12 AWG (5) 10 AWG	(1) 10/3 to 10/12 (5) 14/2 to 10/3	177	5	400
HR121204	12" x 12" Box	12"H x 12"W x 4"D	(9) ½" (8) ½" - ¾" eccentric (6) ¾" - 1" eccentric (6) 1" - 1 ¼" eccentric	(270) 14 AWG (240) 12 AWG (216) 10 AWG	(1) 10/3 to 10/12 (10) 14/2 to 10/3	544	5	800
HRC0808S	Surface Mount Cover	8"H x 8"W x .06"D	-	-	-	-	5	100
HRC0808F	Flush Mount Cover	9.38"H x 9.38"W x .06"D	-	-	-	-	5	160
HRC1212S	Surface Mount Cover	12"H x 12"W x .065"T	-	-	-	-	5	270
HRC1212F	Flush Mount Cover	13.38"H x 13.38"W x .065"T	-	-	-	-	5	230
HRSB1	Stud Bracket	-	-	-	-	-	20	35

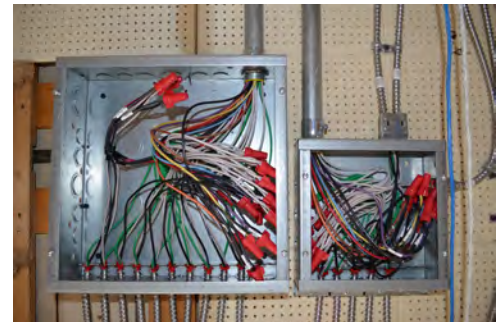


Features:

1. **Patented clamping system** - provides maximum flexibility and maximum grip. Third party certified for use with AC, MC, MCI-A or non-metallic sheathed cable.
2. **Welded steel construction** - provides strong, dependable service and large cubic capacity for ease of wiring.
3. **Combination eccentric knockouts** - on sides for quick and easy access, combination KOs in the back of the box are ideal for applications where joist spacing is too tight for side entry.
4. **Terminal cup washer and flanged nut** - quick, easy service ground termination or attachment of grounding bus-bar.
5. **2 cover options** - square for surface mounted applications or oversized for flush mount applications.
6. **Extensive mounting flexibility** - pre-drilled holes in side and back for direct mounting or for mounting bracket (purchased separately).
7. **Far-side support** - snaps on quickly and easily and is perforated which allows for adjustment in dual thickness, fire-rated walls. Shipped standard with 8" x 8" x 3" models.

Dimensions:

- 8" x 8" x 3"
- 12" x 12" x 4"



PRE-formance Complete

COMPLETE

The most complete turn-key solution for commercial construction projects - the ideal solution for commercial buildings with repetitive installations such as hotels, condominiums, commercial and retail offices, hospitals and apartments

PRE-formance Complete delivers:

- Total pre-fabricated branch wiring system custom produced with Eaton's Crouse-Hinds components, labeled, packaged by room and floor, delivered to your exact location
- Lower total cost of ownership
- Simplified material management, improved material handling and job site safety
- Flexibility to allow skill set allocation to match job requirements
- Elimination of job site material "piles" and inefficient searching for pieces and parts at the job site
- Elimination of job site "engineering"
- Reduction of overages and scrap, including expensive wire and cable
- 30% to 40% labor savings over traditional "stick-build" wiring methods for greatly improved job site efficiency



Hotels, Resorts & Conference Centers



Assisted Living Centers & Medical Facilities



Educational Facilities



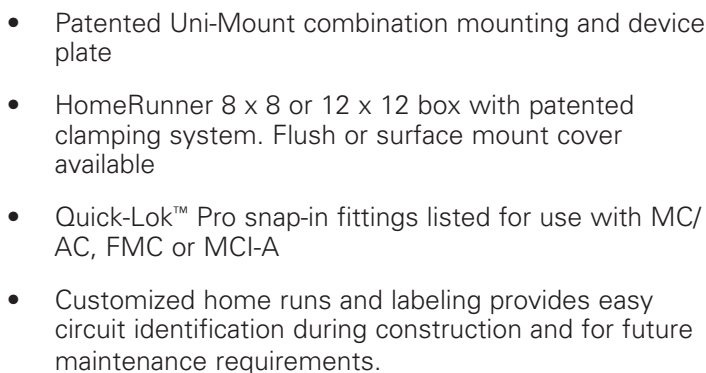
Military Installations



Condominiums

COMPLIE

Customized solution using unique/patented products



Crouse-Hinds
by **FAT-N**
Hotel Example

PRE-formance™ Complete

[illegible][illegible]

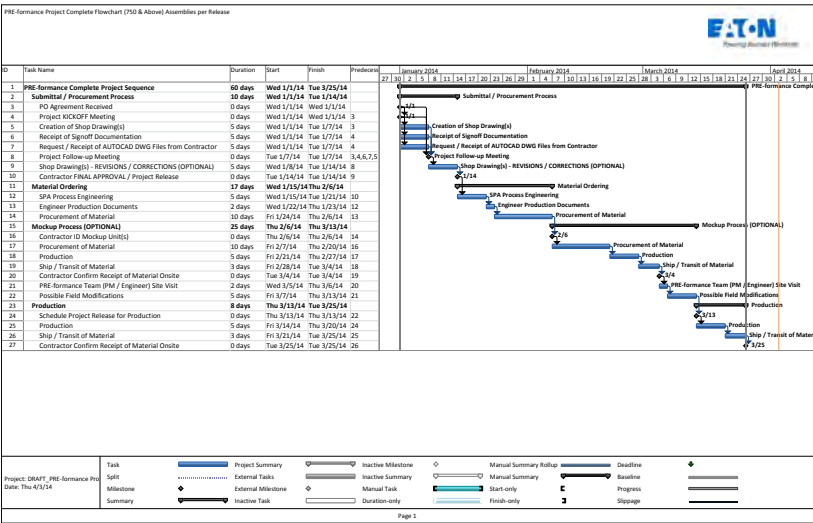
EATON'S CROUSE-HINDS BUSINESS

PRE-formance Complete

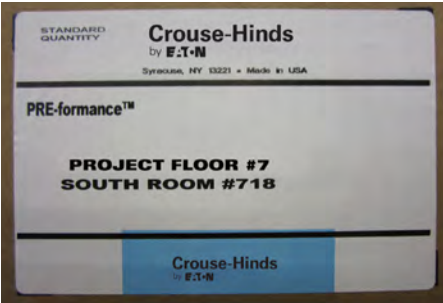
Dedicated factory project management and local sales support and expertise

Customized project management includes:

- Gantt charts
- Secure shared project folders
- Conference calls and site visits



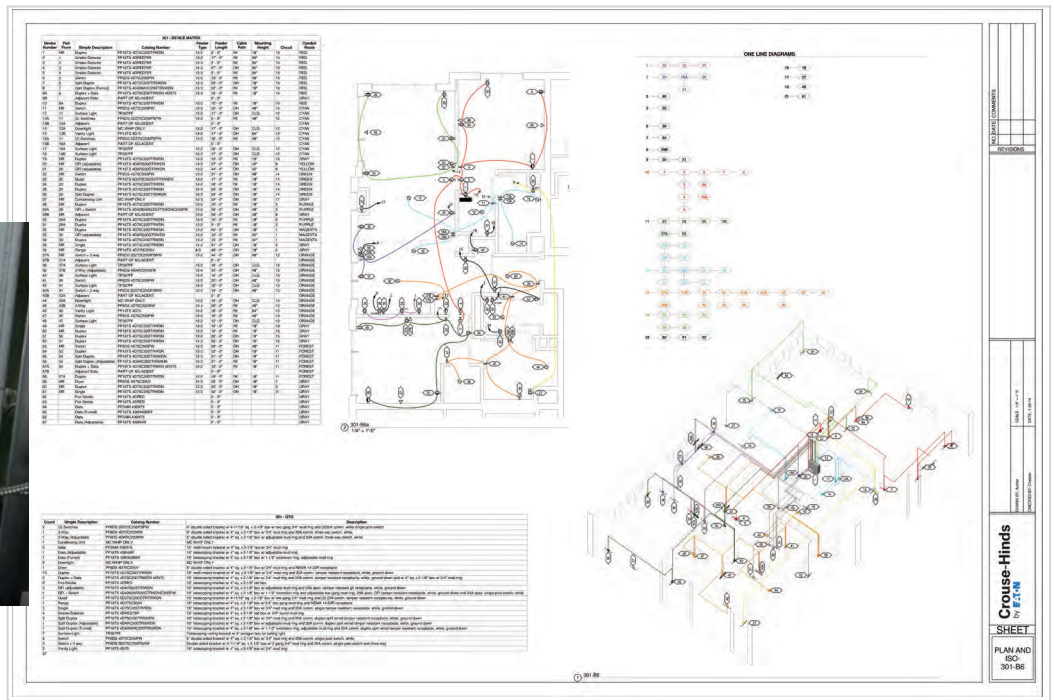
Customized packaging and labeling to simplify job site receiving and handling through job-specific cartons labeled by project floor, unit or area. Ergonomically designed boxes help eliminate the need for special equipment and help reduce material handling risks.



PRE-formance Complete

Customized labels and drawings improve job site layout and provide comprehensive point to point connection data for faster installation and elimination of “field engineering”.

COMPLETE



Project close out meetings to review punch list items (if any) and share lessons learned.



PRE-formance Complete

- Simple, easy to install, UL Listed solution ideal for commercial construction projects and improves job site efficiency
- Modeled by architects and designed by engineers to meet exact project requirements
- Dedicated factory project management and local sales expertise and support
- Product flexibility allows for adjustment on site, if required
- Re-allocates labor, eliminates scrap and material piles, reduces spot buying and consolidates material ordering and receiving
- Helps improve job performance and profitability
- Backed by strength and bankability of Crouse-Hinds and Eaton



See the complete offering of PRE-formance Products at www.crouse-hinds.com.



Commercial Products delivers quality, reliability, labor savings and lower installed cost, all from a single dependable source.

See the complete offering of Commercial Products at www.crouse-hinds.com.

**U.S. (Global Headquarters):
Eaton's Crouse-Hinds Division**

1201 Wolf Street
Syracuse, NY 13208
(866) 764-5454
FAX: (315) 477-5179
Orders Only:
ECHUSAOrders@eaton.com
CrouseCustomerCTR@eaton.com

For more information:

If further assistance is required, please contact an authorized Eaton Distributor, Sales Office, or Customer Service Department.

Canada:

Toll Free: 800-265-0502
FAX: (800) 263-9504
FAX Orders only: (866) 653-0645

Mexico/Latin America/Caribbean:

52-555-804-4000
FAX: 52-555-804-4020
ventascentromex@eaton.com

Europe (Germany):

49 (0) 6271 806-500
49 (0) 6271 806-476
sales.CCH.de@cooperindustries.com

Middle East (Dubai):

971 4 4272500
FAX: 971 4 4298521
chmesales@eaton.com

Singapore:

65-6645-9888
FAX: 65-6297-4819
chsi-sales@cooperindustries.com

China:

86-21-2899-3600
FAX: 86-21-2899-4055
cchsales@cooperindustries.com

Korea:

82-2-3484-6783
82-2-3484-6778
CCHK-sales@cooperindustries.com

Australia:

61-2-8787-2777
FAX: 61-2-9609-2342
CEASales@cooperindustries.com

India:

91-124-4683888
FAX: 91-124-4683899
cchindia@cooperindustries.com

Eaton
1000 Eaton Boulevard
Cleveland, OH 44122
United States
Eaton.com

© 2017 Eaton Corporation
All Rights Reserved
Printed in USA
Form No. 5133-0217
February 2017



Powering Business Worldwide

Eaton's Crouse-Hinds Division
1201 Wolf Street
Syracuse, NY 13208
(866) 764-5454
CrouseCustomerCTR@eaton.com

Eaton is a registered trademark.

All other trademarks are property of their respective owners.

PRE-formance

Giving you the convenience of a pre-fabricated product - plus the flexibility to accommodate job site requirements



PRE-formance

Giving you the convenience of a pre-fabricated product - plus the flexibility to accommodate job site requirements.

Contractors are continually looking for ways to improve job site efficiency and properly align skilled resources to meet tight commercial construction project deadlines. PRE-formance™ delivers the pre-engineered and pre-assembled combination of mounting method, outlet box, plaster ring, devices and leads to simplify branch wiring installation.

PRE-formance pre-fabricated products delivers:

- The ideal solution for commercial buildings with repetitive installations such as hotels, condominium, commercial and retail offices, hospitals and apartments
- Lower total cost of ownership
- Improved material handling and job site safety
- Flexibility to allow skill set allocation to match job requirements
- Elimination of job site material “piles” and inefficient searching for pieces and parts at the job site
- Reduction of overages and scrap, including expensive wire and cable
- Direct labor savings over traditional “stick-build” wiring methods for improved job site efficiency



PRE-formance

Flexible prefabricated branch wiring assemblies available in three comprehensive categories to suit customer project requirements.

Basic See pages 4 - 10

- Available with the most popular drawn and welded boxes with ground screw and pigtail lead already installed
- Patented Uni-Mount™ cover combines plaster ring and mounting method
- Standard pre-fabricated assemblies with mounting brackets, boxes, mud rings, ground screw and pigtail leads
- Most popular configurations available from stock

Custom See pages 11 - 21

- Cafeteria style selection of Eaton's Crouse-Hinds extensive line of mounting brackets, boxes, plaster rings, wiring devices, and other associated branch wiring accessories
- Assembled-to-order pre-fabricated products for both AC/MC and EMT applications
- Available with:
 - Wiring devices with pigtail leads and push-in connectors
 - AC/MC or EMT connectors installed
 - Cable whips attached per customer specification
- Assembled from stock components to meet tight job requirements

Complete See pages 24 - 27

- The most complete turn-key solution for commercial construction projects. The process begins with your architectural and electrical engineering drawings and delivers a total pre-fabricated branch wiring system: custom produced, labeled, packaged by room and floor, and delivered to your exact location
- The ideal solution for commercial buildings with repetitive installations such as hotels, condominium, commercial and retail offices, hospitals and apartments
- Job-specific customized drawings and labels simplify material handling and speeds installation
- Dedicated project management and engineering expertise through every step of the project
- Innovative PRE-formance products are designed by contractors for contractors and provide ease of wiring and job site flexibility to get the job done right and on-time!
- Includes flexible products designed with pre-fabrication, productivity, safety and job site speed in mind
- Contractors can realize 30 to 40% labor savings over traditional "stick-build" wiring methods for greatly improved job site efficiency

PRE-formance Basic Assemblies

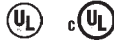


Boxes with pre-installed ground screw and pigtail

Eaton's Crouse-Hinds boxes with pre-installed ground screw and pigtail provide a simple, readily available way to meet grounding and bonding requirements for metal boxes. Includes the 4" or 4-11/16" square box with ground screw and lead installed*.

Certifications & Compliances:

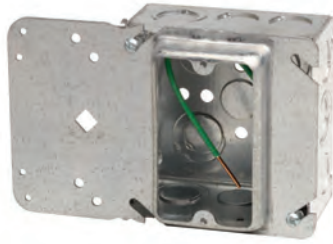
- UL Listed and cUL Listed
- UL File No. E-23156



Cat. #	Description - Pre-Fabricated Box, Cover, Ground Screw and Lead Assembly	Capacity Cu. In.	Unit Qty.	Wt. Lbs Per 100
For Conduit				
TP403PF	4D 1/2 & 3/4 KO Welded Box with ground screw and lead	30.3	25	84
TP404PF	4 SQ 1/2 & 3/4 KO Welded Box with ground screw and lead	21.0	25	72
TP414PF	4 SQ 1/2 & 3/4 KO Drawn Box with ground screw and lead	21.0	25	67
TP431PF	4 SQ MCI Box with ground screw and lead	—	25	91
TP454PF	4 SQ MCI Box with ground screw and lead	22.0	25	92
TP288PF	4D Octagon Box 1/2" KO with ground screw and lead	21.5	25	64
TP290PF	4D Octagon Box 3/4" KO with ground screw and lead	21.5	25	64
TP292PF	4D Octagon Box 1/2 & 3/4" KO with ground screw and lead	21.5	25	64
TP338PF	4 Oct MCI Cable Outlet Box S Set 1/2 Brkt with ground screw and lead	21.5	25	82
TP367PF	4D Octagon Box for AC/MC S Bracket, with ground screw and lead	15.5	25	100
TP438PF	4D Drawn Box 1/2 & 3/4 Concentric KO with ground screw and lead	30.3	25	84
TP451PF	4D Welded Box with VMS Bracket with ground screw and lead	30.3	25	96
TP456PF	4 SQ MCI Box with F Bracket, with ground screw and lead	22.0	25	92
TP521PF	4-11/16" 2-1/8" Deep Welded Box with ground screw and lead	44.0	25	115
TP523PF	4-11/16" 1-1/2" Deep Welded Box with ground screw and lead	29.5	25	99
TP556PF	4-11/16" 2-1/8" Deep Drawn Box with ground screw and lead	42.0	25	104

*Standard ground pigtail is #8-32 ground screw with 8' insulated No. 12 copper wire.

PRE-formance Basic Assemblies



Uni-Mount Assemblies

Eaton's Crouse-Hinds combines the patented Uni-Mount cover (mounting method and mud ring, all in one) to a 4" square box with ground screw and lead installed to simplify ordering, receiving and improve job site speed.

Certifications & Compliances:

- UL Listed and cUL Listed
- UL File No. E-23156



Pre-fabricated Box Features:

- Uni-Mount provides a secure box support and features a built-in plaster ring
- Can be field assembled with outlet box for power applications or used without a box for low voltage applications
- Pre-fabricated Uni-Mount is available with most popular outlet boxes with a choice of 1/2", 5/8" or 3/4" raised cover and includes ground screw and lead
- Rigid bracket design eliminates the need for far side support
- Guide tabs ensure alignment on studs

Uni-Mount Features:

- Uni-Mount combines the features of a mounting device plate with those of a box support, giving you one universal plate for all of your needs. Specifically designed for use with metal or wood studs.
- New and improved Uni-Mount incorporates four small holes on the left side (support side) of the bracket. These holes allow for the attachment of box mounting brackets to allow for use of both sides of the stud. The holes are strategically located to accept the B-Line BB423 bracket. Additionally, the viewing hole has been significantly enlarged (and is now diamond shaped) to make it even easier to find mark lines on the stud.



1 1/2" Deep
Welded
22.0"
Cubic
Capacity

TP404



2 1/8" Deep
Welded
30.3"
Cubic
Capacity

TP403



1 1/2" Deep
Drawn
21.0"
Cubic
Capacity

TP414



2 1/8" Deep
Drawn
30.3"
Cubic
Capacity

TP434

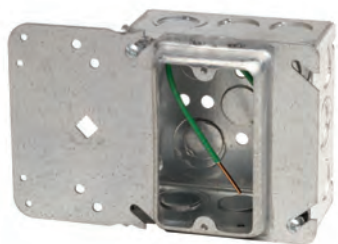


2 1/8" Deep
Welded
30.3"
Cubic
Capacity

TP436

Cat. #	Description - Pre-Fabricated Box, Cover, Ground Screw and Lead Assembly	Capacity Cu. In.	Unit Qty.	Wt. Lbs Per 100
For Conduit				
TP30404PF	1-1/2" Deep Welded Box, 1/2" Raised Single Gang Uni-Mount Cover, ground screw and lead	25.8	25	115
TP30414PF	1-1/2" Deep Drawn Box, 1/2" Raised Single Gang Uni-Mount Cover, ground screw and lead	24.8	25	110
TP31404PF	1-1/2" Deep Welded Box, 5/8" Raised Single Gang Uni-Mount Cover, ground screw and lead	26.3	25	118
TP31414PF	1-1/2" Deep Drawn Box, 5/8" Raised Single Gang Uni-Mount Cover, ground screw and lead	25.3	25	113
TP32404PF	1-1/2" Deep Welded Box, 3/4" Raised Single Gang Uni-Mount Cover, ground screw and lead	27.5	25	122
TP32414PF	1-1/2" Deep Drawn Box, 3/4" Raised Single Gang Uni-Mount Cover, ground screw and lead	26.5	25	117
TP35404PF	1-1/2" Deep Welded Box, 1/2" Raised Two Gang Uni-Mount Cover, ground screw and lead	28.0	25	110
TP35414PF	1-1/2" Deep Drawn Box, 1/2" Raised Two Gang Uni-Mount Cover, ground screw and lead	27.0	25	105
TP36404PF	1-1/2" Deep Welded Box, 5/8" Raised Two Gang Uni-Mount Cover, ground screw and lead	30.0	25	124
TP36414PF	1-1/2" Deep Drawn Box, 5/8" Raised Two Gang Uni-Mount Cover, ground screw and lead	29.0	25	119
TP37404PF	1-1/2" Deep Welded Box, 3/4" Raised Two Gang Uni-Mount Cover, ground screw and lead	31.0	25	126
TP37414PF	1-1/2" Deep Drawn Box, 3/4" Raised Two Gang Uni-Mount Cover, ground screw and lead	30.0	25	121
TP30403PF	2-1/8" Deep Welded Box, 1/2" Raised Single Gang Uni-Mount Cover, ground screw and lead	34.1	25	107
TP30434PF	2-1/8" Deep Drawn Box, 1/2" Raised Single Gang Uni-Mount Cover, ground screw and lead	34.1	25	127
TP31403PF	2-1/8" Deep Welded Box, 5/8" Raised Single Gang Uni-Mount Cover, ground screw and lead	34.6	25	110
TP31434PF	2-1/8" Deep Drawn Box, 5/8" Raised Single Gang Uni-Mount Cover, ground screw and lead	34.6	25	130
TP31436PF	2-1/8" Deep Welded Box, 5/8" Raised Single Gang Uni-Mount Cover, ground screw and lead	26.3	25	130
TP32403PF	2-1/8" Deep Welded Box, 3/4" Raised Single Gang Uni-Mount Cover, ground screw and lead	35.8	25	114
TP32434PF	2-1/8" Deep Drawn Box, 3/4" Raised Single Gang Uni-Mount Cover, ground screw and lead	35.8	25	134
TP35403PF	2-1/8" Deep Welded Box, 1/2" Raised Two Gang Uni-Mount Cover, ground screw and lead	36.3	25	102
TP35434PF	2-1/8" Deep Drawn Box, 1/2" Raised Two Gang Uni-Mount Cover, ground screw and lead	36.3	25	122
TP36403PF	2-1/8" Deep Welded Box, 5/8" Raised Two Gang Uni-Mount Cover, ground screw and lead	38.3	25	116
TP36434PF	2-1/8" Deep Drawn Box, 5/8" Raised Two Gang Uni-Mount Cover, ground screw and lead	38.3	25	136
TP37403PF	2-1/8" Deep Welded Box, 3/4" Raised Two Gang Uni-Mount Cover, ground screw and lead	39.3	25	118
TP37434PF	2-1/8" Deep Drawn Box, 3/4" Raised Two Gang Uni-Mount Cover, ground screw and lead	39.3	25	138

PRE-formance Basic Assemblies



Uni-Mount Assemblies

Eaton's Crouse-Hinds combines the patented Uni-Mount cover (mounting method and mud ring, all in one) to a 4" square box with ground screw and lead installed to simplify ordering, receiving and improve job site speed.

Certifications & Compliances:

- UL Listed and cUL Listed
- UL File No. E-23156



Cat. #	Description - Pre-Fabricated Box, Cover, Ground Screw and Lead Assembly	Capacity Cu. In.	Unit Qty.	Wt. Lbs Per 100
For AC/MC Cable				
TP30454PF	1-1/2" Deep Welded Box assembled to 1/2" Raised Single Gang Uni-Mount Cover	24.8	25	114
TP31454PF	1-1/2" Deep Welded Box assembled to 5/8" Raised Single Gang Uni-Mount Cover	25.3	25	117
TP32454PF	1-1/2" Deep Welded Box assembled to 3/4" Raised Single Gang Uni-Mount Cover	26.5	25	121
TP35454PF	1-1/2" Deep Welded Box assembled to 1/2" Raised Two Gang Uni-Mount Cover	27.0	25	109
TP36454PF	1-1/2" Deep Welded Box assembled to 5/8" Raised Two Gang Uni-Mount Cover	29.0	25	123
TP37454PF	1-1/2" Deep Welded Box assembled to 3/4" Raised Two Gang Uni-Mount Cover	30.0	25	125
TP30431PF	2-1/8" Deep Welded Box assembled to 1/2" Raised Single Gang Uni-Mount Cover	34.1	25	134
TP31431PF	2-1/8" Deep Welded Box assembled to 5/8" Raised Single Gang Uni-Mount Cover	34.6	25	137
TP32431PF	2-1/8" Deep Welded Box assembled to 3/4" Raised Single Gang Uni-Mount Cover	35.8	25	141
TP35431PF	2-1/8" Deep Welded Box assembled to 1/2" Raised Two Gang Uni-Mount Cover	36.3	25	129
TP36431PF	2-1/8" Deep Welded Box assembled to 5/8" Raised Two Gang Uni-Mount Cover	38.3	25	143
TP37431PF	2-1/8" Deep Welded Box assembled to 3/4" Raised Two Gang Uni-Mount Cover	39.3	25	145

Cat. #	Description - Pre-Fabricated Back Box, Cover, Ground Screw and Lead Assembly	Capacity Cu. In.	Unit Qty.	Wt. Lbs Per 100
For Conduit				
TP304DPF	2-1/8" Deep Welded Back Box, 1/2" Raised Single Gang Uni-Mount Cover, ground screw, lead, back cover	24.8	25	114
TP314DPF	2-1/8" Deep Welded Back Box, 5/8" Raised Single Gang Uni-Mount Cover, ground screw, lead, back cover	25.3	25	117
TP324DPF	2-1/8" Deep Welded Back Box, 3/4" Raised Single Gang Uni-Mount Cover, ground screw, lead, back cover	26.5	25	121
TP354DPF	2-1/8" Deep Welded Back Box, 1/2" Raised Two Gang Uni-Mount Cover, ground screw, lead, back cover	27.0	25	109
TP364DPF	2-1/8" Deep Welded Back Box, 5/8" Raised Two Gang Uni-Mount Cover, ground screw, lead, back cover	29.0	25	123
TP374DPF	2-1/8" Deep Welded Back Box, 3/4" Raised Two Gang Uni-Mount Cover, ground screw, lead, back cover	30.0	25	125

Additional Uni-Mount / box configurations available. Consult factory for details.
Remove the PF for boxes without ground screw and lead.
For stranded wire replace PF with PFA.

PRE-formance Basic Assemblies



Single Sided Assemblies

Single Sided Direct Mount Assemblies - all catalog numbers contain a single sided direct mount bracket (for 2-1/2" and 3-1/2" studs), 4" square steel box, mud ring, and 8" insulated solid ground wire with ground screw

Certifications & Compliances:

- UL Listed and cUL Listed
- UL File No. E-324733



Cat. #	Description - Pre-Fabricated Box, Cover, Ground Screw and Lead Assembly
PFH3 4D58	BB423 Single sided bracket, TP403 2-1/8" deep box with pigtail, 5/8" raised 1G mud ring
PFH3 4D75	BB423 Single sided bracket, TP403 2-1/8" deep box with pigtail, 3/4" raised 1G mud ring
PFH3 4DAR*	BB423 Single sided bracket, TP403 2-1/8" deep box with pigtail, Adjustable 1G mud ring
PFH3 4S58	BB423 Single sided bracket, TP404 1-1/2" deep box with pigtail, 5/8" raised 1G mud ring
PFH3 4S75	BB423 Single sided bracket, TP404 1-1/2" deep box with pigtail, 3/4" raised 1G mud ring
PFH3 4D258	BB423 Single sided bracket, TP403 2-1/8" deep box with pigtail, 5/8" raised 2G mud ring
PFH3 4D275	BB423 Single sided bracket, TP403 2-1/8" deep box with pigtail, 3/4" raised 2G mud ring
PFH3 4S258	BB423 Single sided bracket, TP404 1-1/2" deep box with pigtail, 5/8" raised 2G mud ring
PFH3 4S275	BB423 Single sided bracket, TP404 1-1/2" deep box with pigtail, 3/4" raised 2G mud ring

- 4" and 6" Far side supports are available. Replace PFH3 (for 2-1/2" and 3-1/2" studs) with PFH4 (4") (BB44) or PFH6 (6") (BB46).
- Refer to the PRE-formance Catalog Numbering System at the end of this section for additional assembly options and configurations.
- * Not UL Listed. All components are third party certified.



Double Sided Assemblies

Double Sided Direct Mount Assemblies - all catalog numbers contain a double sided direct mount bracket (for 2-1/2" and 3-1/2" studs), 4" square steel box, mud ring and 8" insulated solid ground wire with ground screw.

Certifications & Compliances:

- UL Listed and cUL Listed
- UL File No. E-324733



Cat. #	Description - Pre-Fabricated Box, Cover, Ground Screw and Lead Assembly
PF3DS 4D58	BB73 Double sided bracket, TP403 2-1/8" deep box with pigtail, 5/8" raised 1G mud ring
PF3DS 4D75	BB73 Double sided bracket, TP403 2-1/8" deep box with pigtail, 3/4" raised 1G mud ring
PF3DS 4DAR*	BB73 Double sided bracket, TP403 2-1/8" deep box with pigtail, Adjustable 1G mud ring
PF3DS 4S58	BB73 Double sided bracket, TP404 1-1/2" deep box with pigtail, 5/8" raised 1G mud ring
PF3DS 4S75	BB73 Double sided bracket, TP404 1-1/2" deep box with pigtail, 3/4" raised 1G mud ring
PF3DS 4D258	BB73 Double sided bracket, TP403 2-1/8" deep box with pigtail, 5/8" raised 2G mud ring
PF3DS 4D275	BB73 Double sided bracket, TP403 2-1/8" deep box with pigtail, 3/4" raised 2G mud ring
PF3DS 4S258	BB73 Double sided bracket, TP404 1-1/2" deep box with pigtail, 5/8" raised 2G mud ring
PF3DS 4S275	BB73 Double sided bracket, TP404 1-1/2" deep box with pigtail, 3/4" raised 2G mud ring

- 4" and 6" Far side supports are available. Replace PF3DS (for 2-1/2" and 3-1/2" studs) with PF4DS (4") (BB74) or PF6DS (6") (BB76).
- Refer to the PRE-formance Catalog Numbering System at the end of this section for additional assembly options and configurations.
- * Not UL Listed. All components are third party certified.

PRE-formance Basic Assemblies



Floor Mount Assemblies

Floor Mount Assemblies - all catalog numbers contain a 18" floor mount bracket, 4" square steel box, mud ring and 8" insulated solid ground wire with ground screw.

Certifications & Compliances:

- UL Listed and cUL Listed
- UL File No. E-324733



Cat. #	Description - Pre-Fabricated Box, Cover, Ground Screw and Lead Assembly
PF18FM 4D58	BBF18 Floor mount bracket, TP403 2-1/8" deep box with pigtail, 5/8" raised 1G mud ring
PF18FM 4D75	BBF18 Floor mount bracket, TP403 2-1/8" deep box with pigtail, 3/4" raised 1G mud ring
PF18FM 4DAR*	BBF18 Floor mount bracket, TP403 2-1/8" deep box with pigtail, Adjustable 1G mud ring
PF18FM 4S58	BBF18 Floor mount bracket, TP404 1-1/2" deep box with pigtail, 5/8" raised 1G mud ring
PF18FM 4S75	BBF18 Floor mount bracket, TP404 1-1/2" deep box with pigtail, 3/4" raised 1G mud ring
PF18FM 4D258	BBF18 Floor mount bracket, TP403 2-1/8" deep box with pigtail, 5/8" raised 2G mud ring
PF18FM 4D275	BBF18 Floor mount bracket, TP403 2-1/8" deep box with pigtail, 3/4" raised 2G mud ring
PF18FM 4S258	BBF18 Floor mount bracket, TP404 1-1/2" deep box with pigtail, 5/8" raised 2G mud ring
PF18FM 4S275	BBF18 Floor mount bracket, TP404 1-1/2" deep box with pigtail, 3/4" raised 2G mud ring

- Refer to the PRE-formance Catalog Numbering System at the end of this section for additional assembly options and configurations.
- * Not UL Listed. All components are third party certified.

Telescoping Slider Assemblies

Telescoping Slider Assemblies - all catalog numbers contain a 11-18" telescoping slider bracket, 4" square steel box, mud ring and 8" insulated solid ground wire with ground screw.

Certifications & Compliances:

- UL Listed and cUL Listed
- UL File No. E-324733



Cat. #	Description - Pre-Fabricated Box, Cover, Ground Screw and Lead Assembly
PF16TS 4D58	BB216TS Telescoping slider bracket, TP403 2-1/8" deep box with pigtail, 5/8" raised 1G mud ring
PF16TS 4D75	BB216TS Telescoping slider bracket, TP403 2-1/8" deep box with pigtail, 3/4" raised 1G mud ring
PF16TS 4DAR	BB216TS Telescoping slider bracket, TP403 2-1/8" deep box with pigtail, Adjustable 1G mud ring
PF16TS 4S58	BB216TS Telescoping slider bracket, TP404 1-1/2" deep box with pigtail, 5/8" raised 1G mud ring
PF16TS 4S75	BB216TS Telescoping slider bracket, TP404 1-1/2" deep box with pigtail, 3/4" raised 1G mud ring
PF16TS 4D258	BB216TS Telescoping slider bracket, TP403 2-1/8" deep box with pigtail, 5/8" raised 2G mud ring
PF16TS 4D275	BB216TS Telescoping slider bracket, TP403 2-1/8" deep box with pigtail, 3/4" raised 2G mud ring
PF16TS 4D2AR	BB216TS Telescoping slider bracket, TP403 2-1/8" deep box with pigtail, adjustable 2G mud ring
PF16TS 4S258	BB216TS Telescoping slider bracket, TP404 1-1/2" deep box with pigtail, 5/8" raised 2G mud ring
PF16TS 4S275	BB216TS Telescoping slider bracket, TP404 1-1/2" deep box with pigtail, 3/4" raised 2G mud ring

- 15"-26" Telescoping Slider Assemblies are available. Replace PF16TS (BB216TS) with PF24TS (BB224TS).
- Refer to the PRE-formance Catalog Numbering System at the end of this section for additional assembly options and configurations.

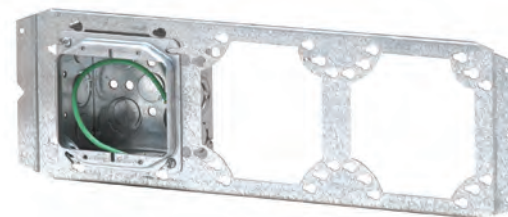
PRE-formance Basic Assemblies

Multi-Mount Assemblies

Multi-Mount Assemblies - all catalog numbers contain a 16" stud spanning Multiple Mount Bracket. Each position may contain a 4" square steel box, mud ring and 8" insulated solid ground wire with ground screw.

Certifications & Compliances:

- UL Listed and cUL Listed
- UL File No. E-324733



Cat. #	Description - Pre-Fabricated Box, Cover, Ground Screw and Lead Assembly
PF3MM 4D58 X X	BB816 Multiple box bracket, 1st Position TP403 2-1/8" deep box with pigtail, 5/8" raised 1G mud ring, 2nd and 3rd positions open
PF3MM 4D75 X X	BB816 Multiple box bracket, 1st Position TP403 2-1/8" deep box with pigtail, 3/4" raised 1G mud ring, 2nd and 3rd positions open
PF3MM 4D258 X X	BB816 Multiple box bracket, 1st Position TP403 2-1/8" deep box with pigtail, 5/8" raised 2G mud ring, 2nd and 3rd positions open
PF3MM 4D275 X X	BB816 Multiple box bracket, 1st Position TP403 2-1/8" deep box with pigtail, 3/4" raised 2G mud ring, 2nd and 3rd positions open
PF3MM 4D58 5DN58 X	BB816 Multiple box bracket, 1st Position TP403 2-1/8" deep box with pigtail, 5/8" raised 1G mud ring, 2nd position TP525 4-11/16" Square 2-1/8 Deep box, 5/8" raised 1G mud ring, no pigtail, 3rd position open
PF3MM 4D75 5DN75 X	BB816 Multiple box bracket, 1st Position TP403 2-1/8" deep box with pigtail, 3/4" raised 1G mud ring, 2nd position TP525 4-11/16" Square 2-1/8 Deep box, 3/4" raised 1G mud ring, no pigtail, 3rd position open
PF3MM 4D258 5DN58 X	B816 Multiple box bracket, 1st Position TP403 2-1/8" deep box with pigtail, 5/8" raised 2G mud ring, 2nd position TP525 4-11/16" Square 2-1/8 Deep box, 5/8" raised 1G mud ring, no pigtail, 3rd position open
PF3MM 4D275 5DN75 X	BB816 Multiple box bracket, 1st Position TP403 2-1/8" deep box with pigtail, 3/4" raised 2G mud ring, 2nd position TP525 4-11/16" Square 2-1/8 Deep box, 3/4" raised 1G mud ring, no pigtail, 3rd position open

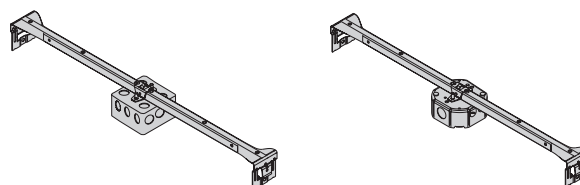
• Refer to the PRE-formance Catalog Numbering System at the end of this section for additional assembly options and configurations.

T-Bar Assemblies

T-Bar Assemblies - all catalog numbers contain BA50 T-Bar fastener, 4" square or octagon box.

Certifications & Compliances:

- UL Listed and cUL Listed
- UL File No. E-324733



Cat. #	Description - Pre-Fabricated Box, Cover, Ground Screw and Lead Assembly
PFBH24 4SN	BA50 Bar hanger, TP404 1-1/2" deep box
PFBH24 4DN	BA50 Bar hanger, TP403 2-1/8" deep box
PFBH24 278N	BA50 Bar hanger, TP278 1-1/2" deep octagon box
PFBH24 292N	BA50 Bar hanger, TP292 2-1/8" deep octagon box

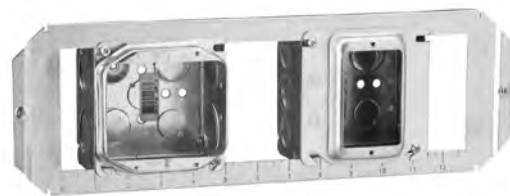
PRE-formance Basic Assemblies

Open Bracket Assemblies

Open Bracket Assemblies - all catalog numbers contain a 16" stud spanning Open Bracket. Each Position may contain a 4" square steel box, mud ring and 8" insulated solid ground wire with ground screw.

Certifications & Compliances:

- UL Listed and cUL Listed
- UL File No. E-324733



Cat. #	Description - Pre-Fabricated Box, Cover, Ground Screw and Lead Assembly
PF16BO 4D58 X X	BB716 Open bracket, 1st Position TP403 2-1/8" deep box with pigtail, 5/8" raised 1G mud ring, 2nd and 3rd positions open
PF16BO 4D75 X X	BB716 Open bracket, 1st Position TP403 2-1/8" deep box with pigtail, 3/4" raised 1G mud ring, 2nd and 3rd positions open
PF16BO 4D258 X X	BB716 Open bracket, 1st Position TP403 2-1/8" deep box with pigtail, 5/8" raised 2G mud ring, 2nd and 3rd positions open
PF16BO 4D275 X X	BB716 Open bracket, 1st Position TP403 2-1/8" deep box with pigtail, 3/4" raised 2G mud ring, 2nd and 3rd positions open
PF16BO 4D58 5DN58 X	BB716 Open bracket, 1st Position TP403 2-1/8" deep box with pigtail, 5/8" raised 1G mud ring, 2nd position TP525 4-11/16" Square 2-1/8 Deep box, 5/8" raised 1G mud ring, no pigtail, 3rd position open
PF16BO 4D75 5DN75 X	BB716 Open bracket, 1st Position TP403 2-1/8" deep box with pigtail, 3/4" raised 1G mud ring, 2nd position TP525 4-11/16" Square 2-1/8 Deep box, 3/4" raised 1G mud ring, no pigtail, 3rd position open
PF16BO 4D258 5DN58 X	BB716 Open bracket, 1st Position TP403 2-1/8" deep box with pigtail, 5/8" raised 2G mud ring, 2nd position TP525 4-11/16" Square 2-1/8 Deep box, 5/8" raised 1G mud ring, no pigtail, 3rd position open
PF16BO 4D275 5DN75 X	BB716 Open bracket, 1st Position TP403 2-1/8" deep box with pigtail, 3/4" raised 2G mud ring, 2nd position TP525 4-11/16" Square 2-1/8 Deep box, 3/4" raised 1G mud ring, no pigtail, 3rd position open

• Refer to the PRE-formance Catalog Numbering System at the end of this section for additional assembly options and configurations.

PRE-formance Custom Assemblies



Uni-Mount Assemblies with Wiring Devices

PRE-formance Uni-Mount Assemblies - all catalog numbers contain a patented Uni-Mount cover (TP31000-37000), 4" square back box, an 8" insulated solid box ground wire, one or two pre-wired Eaton's Wiring Devices with leads, push-in connectors and device protect plates.



Certifications & Compliances:

- UL Listed and cUL Listed
- UL File No. E-324733

Uni-Mount assemblies with wiring devices

- All assemblies are shown with ivory colored devices. At the end of the catalog number, replace the "V" with "W" for white colored device. Other device colors and types are available. Consult factory for details.

Commonly ordered catalog examples are listed below

- See Uni-Mount assembly catalog numbering system at the end of the Uni-Mount assembly pages for more information on how to construct catalog numbers for almost any customer application.

Duplex Receptacles



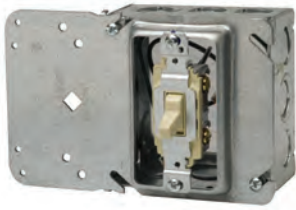
Commercial Grade Receptacle	Industrial Grade Receptacle	Hospital Grade Receptacle	4" Square Steel Back Box	Uni-Mount
Assembly Catalog Number with CR20V Commercial Grade 20A Duplex Receptacle Installed	Assembly Catalog Number with 5362V Industrial Grade 20A Duplex Receptacle Installed	Assembly Catalog Number with 8300V Hospital Grade 20A Duplex Receptacle Installed		
Single 20A Duplex Receptacle				
TP314D C20DV	TP314D I20DV	TP314D H20DV	2-1/8" Deep	5/8" Single Gang
TP314S C20DV	TP314S I20DV	TP314S H20DV	1-1/2" Deep	5/8" Single Gang
TP324D C20DV	TP324D I20DV	TP324D H20DV	2-1/8" Deep	3/4" Single Gang
TP324S C20DV	TP324S I20DV	TP324S H20DV	1-1/2" Deep	3/4" Single Gang
Double 20A Duplex Receptacle				
TP364D C20DDV	TP364D I20DDV	TP364D H20DDV	2-1/8" Deep	5/8" Two Gang
TP364S C20DDV	TP364S I20DDV	TP364S H20DDV	1-1/2" Deep	5/8" Two Gang
TP374D C20DDV	TP374D I20DDV	TP374D H20DDV	2-1/8" Deep	3/4" Two Gang
TP374S C20DDV	TP374S I20DDV	TP374S H20DDV	1-1/2" Deep	3/4" Two Gang

GFCI Receptacles



Specification Grade GFCI Receptacle	Hospital Grade GFCI Receptacle	4" Square Steel Back Box	Uni-Mount
Assembly Catalog Number with VGF20 Specification Grade 20A GFCI Receptacle Installed	Assembly Catalog Number with VGFH20V Hospital Grade 20A GFCI Receptacle Installed		
Single 20A GFCI Receptacle			
TP314D S20GV	TP314D H20GV	2-1/8" Deep	5/8" Single Gang
TP314S S20GV	TP314S H20GV	1-1/2" Deep	5/8" Single Gang
TP324D S20GV	TP324D H20GV	2-1/8" Deep	3/4" Single Gang
TP324S S20GV	TP324S H20GV	1-1/2" Deep	3/4" Single Gang
Double 20A GFCI Receptacle			
TP364D S20GGV	TP364D H20GGV	2-1/8" Deep	5/8" Two Gang
TP364S S20GGV	TP364S H20GGV	1-1/2" Deep	5/8" Two Gang
TP374D S20GGV	TP374D H20GGV	2-1/8" Deep	3/4" Two Gang
TP374S S20GGV	TP374S H20GGV	1-1/2" Deep	3/4" Two Gang

PRE-formance Custom Assemblies



Uni-Mount Assemblies with Wiring Devices

PRE-formance Uni-Mount Assemblies - all catalog numbers contain a patented Uni-Mount cover (TP31000-37000), 4" square back box, 8" insulated solid box ground wire, one or two pre-wired Eaton's Wiring Devices with leads, push-in connectors and device protect plates.

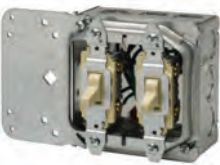
Certifications & Compliances:

- UL Listed and cUL Listed
- UL File No. E-324733

Commonly ordered catalog examples are listed below

- See Uni-Mount assembly catalog numbering system at the end of the Uni-Mount assembly pages for more information on how to construct catalog numbers for almost any customer application.

Single Pole Switch



Commercial Grade Single Pole Switch	Industrial Grade Single Pole Switch		
Assembly Catalog Number with CS120V Commercial Grade 20A Single Pole Switch Installed	Assembly Catalog Number with AH1221V Industrial Grade 20A Single Pole Switch Installed	4" Square Steel Back Box	Uni-Mount
Single 20A Single Pole Switch			
TP314D C20SPV	TP314D I20SPV	2-1/8" Deep	5/8" Single Gang
TP314S C20SPV	TP314S I20SPV	1-1/2" Deep	5/8" Single Gang
TP324D C20SPV	TP324D I20SPV	2-1/8" Deep	3/4" Single Gang
TP324S C20SPV	TP324S I20SPV	1-1/2" Deep	3/4" Single Gang
Double 20A Single Pole Switch			
TP364D C20SPSPV	TP364D I20SPSPV	2-1/8" Deep	5/8" Two Gang
TP364S C20SPSPV	TP364S I20SPSPV	1-1/2" Deep	5/8" Two Gang
TP374D C20SPSPV	TP374D I20SPSPV	2-1/8" Deep	3/4" Two Gang
TP374S C20SPSPV	TP374S I20SPSPV	1-1/2" Deep	3/4" Two Gang

Three Way Switch



Commercial Grade Three Way Switch	Industrial Grade Three Way Switch		
Assembly Catalog Number with CS320V Commercial Grade 20A Three Way Switch Installed	Assembly Catalog Number with AH1223V Industrial Grade 20A Three Way Switch Installed	4" Square Steel Back Box	Uni-Mount
Single 20A Three Way Switch			
TP314D C203WV	TP314D I203WV	2-1/8" Deep	5/8" Single Gang
TP314S C203WV	TP314S I203WV	1-1/2" Deep	5/8" Single Gang
TP324D C203WV	TP324D I203WV	2-1/8" Deep	3/4" Single Gang
TP324S C203WV	TP324S I203WV	1-1/2" Deep	3/4" Single Gang
Double 20A Three Way Switch			
TP364D C203W3WV	TP364D I203W3WV	2-1/8" Deep	5/8" Two Gang
TP364S C203W3WV	TP364S I203W3WV	1-1/2" Deep	5/8" Two Gang
TP374D C203W3WV	TP374D I203W3WV	2-1/8" Deep	3/4" Two Gang
TP374S C203W3WV	TP374S I203W3WV	1-1/2" Deep	3/4" Two Gang

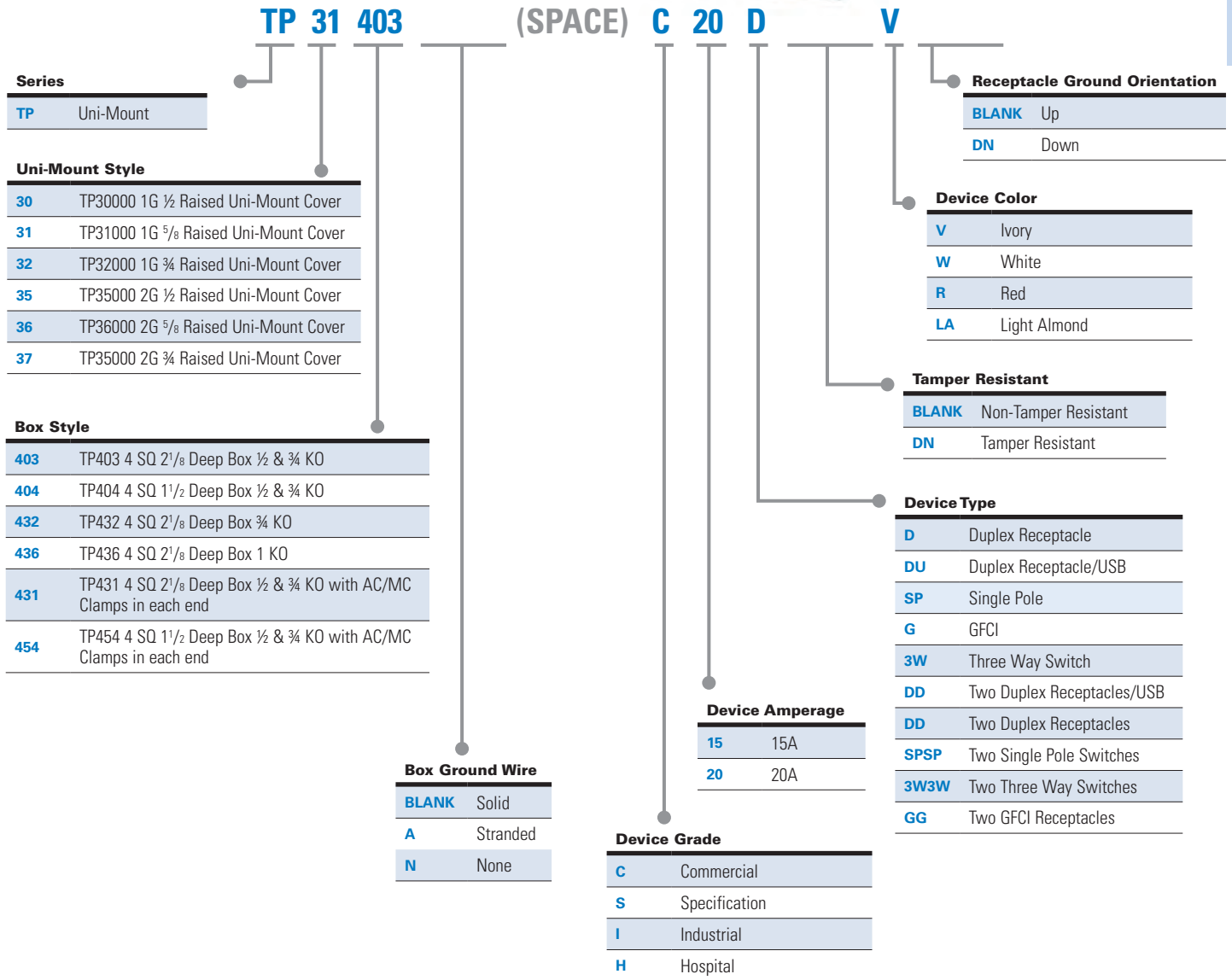
- Other box types, device colors, mud ring depths, brackets and assembly configurations are available. Consult factory for details.
- To change the color of device from ivory (as shown) to white, substitute V (Ivory) with W (White). For ex. TP314D C20DV becomes TP314D C20DW.
- All receptacles are shipped standard ground up. Add suffix DN for ground down.
- All assemblies shipped standard with metal device protect plates.
- Pre-installed connectors available on all assembly types. Consult factory for details.

PRE-formance Catalog Numbering System

For Uni-Mount Assemblies with Wiring Devices



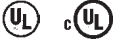
Part number example
TP31403 C20DV



Standard Eaton's Wiring Devices used in PRE-formance Assemblies

Eaton's Crouse-Hinds Wiring Device Nomenclature (without color suffix)	Eaton's Wiring Device Catalog Number used (shown without color suffix)	Description
C20D	CR20	Commercial Grade 20A Duplex Receptacle
I20D	5362	Industrial Grade 20A Duplex Receptacle
H20D	8300	Hospital Grade 20A Duplex Receptacle
S20G	VGf20	Specification Grade 20A GFCI Receptacle
H20G	VGfH20	Hospital Grade 20A GFCI Receptacle
C20SP	CS120	Commercial Grade 20A Single Pole Switch
I20SP	AH1221	Industrial Grade 20A Single Pole Switch
C203W	CS320	Commercial Grade 20A Three Way Switch
I203W	AH1223	Industrial Grade 20A Three Way Switch

PRE-formance Custom Assemblies



Single Sided Assemblies with Wiring Devices

Single Sided Assemblies - all catalog numbers contain a single sided bracket (BB4-23 for 3-1/2" and 2-1/2" studs), 4" square box, 8" insulated solid box ground wire, one or two pre-wired Eaton's Wiring Devices with leads, push-in connectors and device protect plates.

Certifications & Compliances:

- UL Listed and cUL Listed
- UL File No. E-324733

Single Sided Assemblies with wiring devices

- All assemblies are shown with ivory colored devices. At the end of the catalog number, replace the "V" with "W" for white colored device. Other device colors and types are available. Consult factory for details. Double sided direct mount assemblies are also available. Substitute PFH3 in the catalog number with PF3DS (BB73 double sided bracket).
- 4" and 6" far side supports are available. Replace PFH3 (for 2-1/2" and 3-1/2" studs) with PFH4 (4") (BB44) or PFH6 (6") (BB46).

Commonly ordered catalog examples are listed below

- See assembly catalog numbering system at the end of this section for more information on how to construct catalog numbers for almost any customer application.

Duplex Receptacles



Commercial Grade Receptacle	Industrial Grade Receptacle	Hospital Grade Receptacle	4" Square Steel Back Box	Mud Ring
Assembly Catalog Number with CR20V Commercial Grade 20A Duplex Receptacle Installed	Assembly Catalog Number with 5362V Industrial Grade 20A Duplex Receptacle Installed	Assembly Catalog Number with 8300V Hospital Grade 20A Duplex Receptacle Installed		
Single 20A Duplex Receptacle				
PFH3 4D58C20DV	PFH3 4D58I20DV	PFH3 4D58H20DV	2-1/8" Deep	5/8" Single Gang
PFH3 4S58C20DV	PFH3 4S58I20DV	PFH3 4S58H20DV	1-1/2" Deep	5/8" Single Gang
PFH3 4D75C20DV	PFH3 4D75I20DV	PFH3 4D75H20DV	2-1/8" Deep	3/4" Single Gang
PFH3 4S75C20DV	PFH3 4S75I20DV	PFH3 4S75H20DV	1-1/2" Deep	3/4" Single Gang
Double 20A Duplex Receptacle				
PFH3 4D258C20DDV	PFH3 4D258I20DDV	PFH3 4D258H20DDV	2-1/8" Deep	5/8" Two Gang
PFH3 4S258C20DDV	PFH3 4S258I20DDV	PFH3 4S258H20DDV	1-1/2" Deep	5/8" Two Gang
PFH3 4D275C20DDV	PFH3 4D275I20DDV	PFH3 4D275H20DDV	2-1/8" Deep	3/4" Two Gang
PFH3 4S275C20DDV	PFH3 4S275I20DDV	PFH3 4S275H20DDV	1-1/2" Deep	3/4" Two Gang

GFCI Receptacles



Specification Grade GFCI Receptacle	Hospital Grade GFCI Receptacle	4" Square Steel Back Box	Mud Ring
Assembly Catalog Number with VGF20 Specification Grade 20A GFCI Receptacle Installed	Assembly Catalog Number with VGFH20V Hospital Grade 20A GFCI Receptacle Installed		
Single 20A GFCI Receptacle			
PFH3 4D58S20GV	PFH3 4D58H20GV	2-1/8" Deep	5/8" Single Gang
PFH3 4S58S20GV	PFH3 4S58H20GV	1-1/2" Deep	5/8" Single Gang
PFH3 4D75S20GV	PFH3 4D75H20GV	2-1/8" Deep	3/4" Single Gang
PFH3 4S75S20GV	PFH3 4S75H20GV	1-1/2" Deep	3/4" Single Gang
Double 20A GFCI Receptacle			
PFH3 4D258S20GGV	PFH3 4D258H20GGV	2-1/8" Deep	5/8" Two Gang
PFH3 4S258S20GGV	PFH3 4S258H20GGV	1-1/2" Deep	5/8" Two Gang
PFH3 4D275S20GGV	PFH3 4D275H20GGV	2-1/8" Deep	3/4" Two Gang
PFH3 4S275S20GGV	PFH3 4S275H20GGV	1-1/2" Deep	3/4" Two Gang

PRE-formance Custom Assemblies



Single Sided Assemblies with Wiring Devices

Single Sided Assemblies - all catalog numbers contain a single sided bracket (BB4-23 for 3-1/2" and 2-1/2" studs), 4" square box, 8" insulated solid box ground wire, one or two pre-wired Eaton's Wiring Devices with leads, push-in connectors and device protect plates.

Certifications & Compliances:

- UL Listed and cUL Listed
- UL File No. E-324733

Commonly ordered catalog examples are listed below

- See assembly catalog numbering system at the end of this section for more information on how to construct catalog numbers for almost any customer application.

Single Pole Switch



Commercial Grade Single Pole Switch	Industrial Grade Single Pole Switch		
Assembly Catalog Number with CS120V Commercial Grade 20A Single Pole Switch Installed	Assembly Catalog Number with AH1221V Industrial Grade 20A Single Pole Switch Installed	4" Square Steel Back Box	Mud Ring
Single 20A Single Pole Switch			
PFH3 4D58C20SPV	PFH3 4D58I20SPV	2-1/8" Deep	5/8" Single Gang
PFH3 4S58C20SPV	PFH3 4S58I20SPV	1-1/2" Deep	5/8" Single Gang
PFH3 4D75C20SPV	PFH3 4D75I20SPV	2-1/8" Deep	3/4" Single Gang
PFH3 4S75C20SPV	PFH3 4S75I20SPV	1-1/2" Deep	3/4" Single Gang
Double 20A Single Pole Switch			
PFH3 4D258C20SPSPV	PFH3 4D258I20SPSPV	2-1/8" Deep	5/8" Two Gang
PFH3 4S258C20SPSPV	PFH3 4S258I20SPSPV	1-1/2" Deep	5/8" Two Gang
PFH3 4D275C20SPSPV	PFH3 4D275I20SPSPV	2-1/8" Deep	3/4" Two Gang
PFH3 4S275C20SPSPV	PFH3 4S275I20SPSPV	1-1/2" Deep	3/4" Two Gang

Three Way Switch



Commercial Grade Three Way Switch	Industrial Grade Three Way Switch		
Assembly Catalog Number with CS320V Commercial Grade 20A Three Way Switch Installed	Assembly Catalog Number with AH1223V Industrial Grade 20A Three Way Switch Installed	4" Square Steel Back Box	Mud Ring
Single 20A Three Way Switch			
PFH3 4D58C203WV	PFH3 4D58I203WV	2-1/8" Deep	5/8" Single Gang
PFH3 4S58C203WV	PFH3 4S58I203WV	1-1/2" Deep	5/8" Single Gang
PFH3 4D75C203WV	PFH3 4D75I203WV	2-1/8" Deep	3/4" Single Gang
PFH3 4S75C203WV	PFH3 4S75I203WV	1-1/2" Deep	3/4" Single Gang
Double 20A Three Way Switch			
PFH3 4D258C203W3WV	PFH3 4D258I203W3WV	2-1/8" Deep	5/8" Two Gang
PFH3 4S258C203W3WV	PFH3 4S258I203W3WV	1-1/2" Deep	5/8" Two Gang
PFH3 4D275C203W3WV	PFH3 4D275I203W3WV	2-1/8" Deep	3/4" Two Gang
PFH3 4S275C203W3WV	PFH3 4S275I203W3WV	1-1/2" Deep	3/4" Two Gang

- Other box types, device colors, mud ring depths, brackets and assembly configurations are available. Consult factory for details.
- To change the color of device from ivory (as shown) to white, substitute V (Ivory) with W (White). For ex. PFH3 4D58C20DV becomes PFH3 4D58C20DW.
- All receptacles are shipped standard ground up. Add suffix DN for ground down.
- All assemblies shipped standard with metal device protect plates.
- Pre-installed connectors available on all assembly types. Consult factory for details.

PRE-formance Custom Assemblies



Double Sided Assemblies with Wiring Devices

Double Sided Assemblies - all catalog numbers contain a double sided bracket (BB73-23 for 3-1/2" and 2-1/2" studs), 4" square box, 8" insulated solid box ground wire, one or two pre-wired Eaton's Wiring Devices with leads, push-in connectors and device protect plates.

Certifications & Compliances:

- UL Listed and cUL Listed
- UL File No. E-324733

Double Sided Assemblies with wiring devices

- All assemblies are shown with ivory colored devices. At the end of the catalog number, replace the "V" with "W" for white colored device. Other device colors and types are available. Consult factory for details.
- 4" and 6" far side supports are available. Replace PF3DS (for 2-1/2" and 3-1/2" studs) with PF4DS (4") (BB74) or PF6DS (6") (BB76).

Commonly ordered catalog examples are listed below

- See assembly catalog numbering system at the end of this section for more information on how to construct catalog numbers for almost any customer application.

Duplex Receptacles



Commercial Grade Receptacle	Industrial Grade Receptacle	Hospital Grade Receptacle	4" Square Steel Back Box	Mud Ring
Assembly Catalog Number with CR20V Commercial Grade 20A Duplex Receptacle Installed	Assembly Catalog Number with 5362V Industrial Grade 20A Duplex Receptacle Installed	Assembly Catalog Number with 8300V Hospital Grade 20A Duplex Receptacle Installed		
Single 20A Duplex Receptacle				
PF3DS 4D58C20DV	PF3DS 4D58I20DV	PF3DS 4D58H20DV	2-1/8" Deep	5/8" Single Gang
PF3DS 4S58C20DV	PF3DS 4S58I20DV	PF3DS 4S58H20DV	1-1/2" Deep	5/8" Single Gang
PF3DS 4D75C20DV	PF3DS 4D75I20DV	PF3DS 4D75H20DV	2-1/8" Deep	3/4" Single Gang
PF3DS 4S75C20DV	PF3DS 4S75I20DV	PF3DS 4S75H20DV	1-1/2" Deep	3/4" Single Gang
Double 20A Duplex Receptacle				
PF3DS 4D258C20DDV	PF3DS 4D258I20DDV	PF3DS 4D258H20DDV	2-1/8" Deep	5/8" Two Gang
PF3DS 4S258C20DDV	PF3DS 4S258I20DDV	PF3DS 4S258H20DDV	1-1/2" Deep	5/8" Two Gang
PF3DS 4D275C20DDV	PF3DS 4D275I20DDV	PF3DS 4D275H20DDV	2-1/8" Deep	3/4" Two Gang
PF3DS 4S275C20DDV	PF3DS 4S275I20DDV	PF3DS 4S275H20DDV	1-1/2" Deep	3/4" Two Gang

GFCI Receptacles



Specification Grade GFCI Receptacle	Hospital Grade GFCI Receptacle	4" Square Steel Back Box	Mud Ring
Assembly Catalog Number with VGF20 Specification Grade 20A GFCI Receptacle Installed	Assembly Catalog Number with VGFH20V Hospital Grade 20A GFCI Receptacle Installed		
Single 20A GFCI Receptacle			
PF3DS 4D58S20GV	PF3DS 4D58H20GV	2-1/8" Deep	5/8" Single Gang
PF3DS 4S58S20GV	PF3DS 4S58H20GV	1-1/2" Deep	5/8" Single Gang
PF3DS 4D75S20GV	PF3DS 4D75H20GV	2-1/8" Deep	3/4" Single Gang
PF3DS 4S75S20GV	PF3DS 4S75H20GV	1-1/2" Deep	3/4" Single Gang
Double 20A GFCI Receptacle			
PF3DS 4D258S20GGV	PF3DS 4D258H20GGV	2-1/8" Deep	5/8" Two Gang
PF3DS 4S258S20GGV	PF3DS 4S258H20GGV	1-1/2" Deep	5/8" Two Gang
PF3DS 4D275S20GGV	PF3DS 4D275H20GGV	2-1/8" Deep	3/4" Two Gang
PF3DS 4S275S20GGV	PF3DS 4S275H20GGV	1-1/2" Deep	3/4" Two Gang

PRE-formance Custom Assemblies



Double Sided Assemblies with Wiring Devices

Double Sided Assemblies - all catalog numbers contain a double sided bracket (BB73-23 for 3-1/2" and 2-1/2" studs), 4" square box, 8" insulated solid box ground wire, one or two pre-wired Eaton's Wiring Devices with leads, push-in connectors and device protect plates.

Certifications & Compliances:

- UL Listed and cUL Listed
- UL File No. E-324733

Commonly ordered catalog examples are listed below

- See assembly catalog numbering system at the end of this section for more information on how to construct catalog numbers for almost any customer application.

Single Pole Switch



Three Way Switch



Commercial Grade Single Pole Switch	Industrial Grade Single Pole Switch		
Assembly Catalog Number with CS120V Commercial Grade 20A Single Pole Switch Installed	Assembly Catalog Number with AH1221V Industrial Grade 20A Single Pole Switch Installed	4" Square Steel Back Box	Mud Ring
Single 20A Single Pole Switch			
PF3DS 4D58C20SPV	PF3DS 4D58I20SPV	2-1/8" Deep	5/8" Single Gang
PF3DS 4S58C20SPV	PF3DS 4S58I20SPV	1-1/2" Deep	5/8" Single Gang
PF3DS 4D75C20SPV	PF3DS 4D75I20SPV	2-1/8" Deep	3/4" Single Gang
PF3DS 4S75C20SPV	PF3DS 4S75I20SPV	1-1/2" Deep	3/4" Single Gang
Double 20A Single Pole Switch			
PF3DS 4D258C20SPSPV	PF3DS 4D258I20SPSPV	2-1/8" Deep	5/8" Two Gang
PF3DS 4S258C20SPSPV	PF3DS 4S258I20SPSPV	1-1/2" Deep	5/8" Two Gang
PF3DS 4D275C20SPSPV	PF3DS 4D275I20SPSPV	2-1/8" Deep	3/4" Two Gang
PF3DS 4S275C20SPSPV	PF3DS 4S275I20SPSPV	1-1/2" Deep	3/4" Two Gang
Commercial Grade Three Way Switch	Industrial Grade Three Way Switch		
Assembly Catalog Number with CS320V Commercial Grade 20A Three Way Switch Installed	Assembly Catalog Number with AH1223V Industrial Grade 20A Three Way Switch Installed	4" Square Steel Back Box	Mud Ring
Single 20A Three Way Switch			
PF3DS 4D58C203WV	PF3DS 4D58I203WV	2-1/8" Deep	5/8" Single Gang
PF3DS 4S58C203WV	PF3DS 4S58I203WV	1-1/2" Deep	5/8" Single Gang
PF3DS 4D75C203WV	PF3DS 4D75I203WV	2-1/8" Deep	3/4" Single Gang
PF3DS 4S75C203WV	PF3DS 4S75I203WV	1-1/2" Deep	3/4" Single Gang
Double 20A Three Way Switch			
PF3DS 4D258C203W3WV	PF3DS 4D258I203W3WV	2-1/8" Deep	5/8" Two Gang
PF3DS 4S258C203W3WV	PF3DS 4S258I203W3WV	1-1/2" Deep	5/8" Two Gang
PF3DS 4D275C203W3WV	PF3DS 4D275I203W3WV	2-1/8" Deep	3/4" Two Gang
PF3DS 4S275C203W3WV	PF3DS 4S275I203W3WV	1-1/2" Deep	3/4" Two Gang

- Other box types, device colors, mud ring depths, brackets and assembly configurations are available. Consult factory for details.
- To change the color of device from ivory (as shown) to white, substitute V (Ivory) with W (White). For ex. PF3DS 4D58C20DV becomes PF3DS 4D58C20DW.
- All receptacles are shipped standard ground up. Add suffix DN for ground down.
- All assemblies shipped standard with metal device protect plates.
- Pre-installed connectors available on all assembly types. Consult factory for details.

PRE-formance Custom Assemblies

Telescoping Slider Assemblies with Wiring Devices

Telescoping Slider Assemblies - all catalog numbers contain a Telescoping Slider Bracket (BB216TS 11"-18"), 4" square traditional closed back box, 8" insulated stranded box ground wire with ground screw, one or two pre-wired Eaton's Wiring Devices with leads, push-in connectors, and device protect plates.



Certifications & Compliances:

- UL Listed and cUL Listed
- UL File No. E-324733

Commonly ordered catalog examples are listed below

- See assembly catalog numbering system at the end of this section for more information on how to construct catalog numbers for almost any customer application.

Duplex Receptacles



Commercial Grade Receptacle	Industrial Grade Receptacle	Hospital Grade Receptacle	4" Square Steel Back Box	Mud Ring
Assembly Catalog Number with CR20V Commercial Grade 20A Duplex Receptacle Installed	Assembly Catalog Number with 5362V Industrial Grade 20A Duplex Receptacle Installed	Assembly Catalog Number with 8300V Hospital Grade 20A Duplex Receptacle Installed		
Single 20A Duplex Receptacle				
PF16TS 4DA58C20DV	PF16TS 4DA58I20DV	PF16TS 4DA58H20DV	2-1/8" Deep	5/8" Single Gang
PF16TS 4SA58C20DV	PF16TS 4SA58I20DV	PF16TS 4SA58H20DV	1-1/2" Deep	5/8" Single Gang
PF16TS 4DA75C20DV	PF16TS 4DA75I20DV	PF16TS 4DA75H20DV	2-1/8" Deep	3/4" Single Gang
PF16TS 4SA75C20DV	PF16TS 4SA75I20DV	PF16TS 4SA75H20DV	1-1/2" Deep	3/4" Single Gang
Double 20A Duplex Receptacle				
PF16TS 4DA258C20DDV	PF16TS 4DA258I20DDV	PF16TS 4DA258H20DDV	2-1/8" Deep	5/8" Two Gang
PF16TS 4SA258C20DDV	PF16TS 4SA258I20DDV	PF16TS 4SA258H20DDV	1-1/2" Deep	5/8" Two Gang
PF16TS 4DA275C20DDV	PF16TS 4DA275I20DDV	PF16TS 4DA275H20DDV	2-1/8" Deep	3/4" Two Gang
PF16TS 4SA275C20DDV	PF16TS 4SA275I20DDV	PF16TS 4SA275H20DDV	1-1/2" Deep	3/4" Two Gang

GFCI Receptacles



Specification Grade GFCI Receptacle	Hospital Grade GFCI Receptacle	4" Square Steel Back Box	Mud Ring
Assembly Catalog Number with VGF20 Specification Grade 20A GFCI Receptacle Installed	Assembly Catalog Number with VGFH20V Hospital Grade 20A GFCI Receptacle Installed		
Single 20A GFCI Receptacle			
PF16TS 4DA58S20GV	PF16TS 4DA58H20GV	2-1/8" Deep	5/8" Single Gang
PF16TS 4SA58S20GV	PF16TS 4SA58H20GV	1-1/2" Deep	5/8" Single Gang
PF16TS 4DA75S20GV	PF16TS 4DA75H20GV	2-1/8" Deep	3/4" Single Gang
PF16TS 4SA75S20GV	PF16TS 4SA75H20GV	1-1/2" Deep	3/4" Single Gang
Double 20A GFCI Receptacle			
PF16TS 4DA258S20GGV	PF16TS 4DA258H20GGV	2-1/8" Deep	5/8" Two Gang
PF16TS 4SA258S20GGV	PF16TS 4SA258H20GGV	1-1/2" Deep	5/8" Two Gang
PF16TS 4DA275S20GGV	PF16TS 4DA275H20GGV	2-1/8" Deep	3/4" Two Gang
PF16TS 4SA275S20GGV	PF16TS 4SA275H20GGV	1-1/2" Deep	3/4" Two Gang

PRE-formance Custom Assemblies

Telescoping Slider Assemblies with Wiring Devices

Telescoping Slider Assemblies - all catalog numbers contain a Telescoping Slider Bracket (BB216TS 11"-18"), 4" square traditional closed back box, 8" insulated stranded box ground wire with ground screw, one or two pre-wired Eaton's Wiring Devices with leads, push-in connectors, and device protect plates.



Certifications & Compliances:

- UL Listed and cUL Listed
- UL File No. E-324733

Commonly ordered catalog examples are listed below

- See assembly catalog numbering system at the end of this section for more information on how to construct catalog numbers for almost any customer application.

Single Pole Switch



Commercial Grade Single Pole Switch	Industrial Grade Single Pole Switch		
Assembly Catalog Number with CS120V Commercial Grade 20A Single Pole Switch Installed	Assembly Catalog Number with AH1221V Industrial Grade 20A Single Pole Switch Installed	4" Square Steel Back Box	Mud Ring
Single 20A Single Pole Switch			
PF16TS 4DA58C20SPV	PF16TS 4DA58I20SPV	2-1/8" Deep	5/8" Single Gang
PF16TS 4SA58C20SPV	PF16TS 4SA58I20SPV	1-1/2" Deep	5/8" Single Gang
PF16TS 4DA75C20SPV	PF16TS 4DA75I20SPV	2-1/8" Deep	3/4" Single Gang
PF16TS 4SA75C20SPV	PF16TS 4SA75I20SPV	1-1/2" Deep	3/4" Single Gang
Double 20A Single Pole Switch			
PF16TS 4DA258C20SPSPV	PF16TS 4DA258I20SPSPV	2-1/8" Deep	5/8" Two Gang
PF16TS 4SA258C20SPSPV	PF16TS 4SA258I20SPSPV	1-1/2" Deep	5/8" Two Gang
PF16TS 4DA275C20SPSPV	PF16TS 4DA275I20SPSPV	2-1/8" Deep	3/4" Two Gang
PF16TS 4SA275C20SPSPV	PF16TS 4SA275I20SPSPV	1-1/2" Deep	3/4" Two Gang

Three Way Switch



Commercial Grade Three Way Switch	Industrial Grade Three Way Switch		
Assembly Catalog Number with CS320V Commercial Grade 20A Three Way Switch Installed	Assembly Catalog Number with AH1223V Industrial Grade 20A Three Way Switch Installed	4" Square Steel Back Box	Mud Ring
Single 20A Three Way Switch			
PF16TS 4DA58C203WV	PF16TS 4DA58I203WV	2-1/8" Deep	5/8" Single Gang
PF16TS 4SA58C203WV	PF16TS 4SA58I203WV	1-1/2" Deep	5/8" Single Gang
PF16TS 4DA75C203WV	PF16TS 4DA75I203WV	2-1/8" Deep	3/4" Single Gang
PF16TS 4SA75C203WV	PF16TS 4SA75I203WV	1-1/2" Deep	3/4" Single Gang
Double 20A Three Way Switch			
PF16TS 4DA258C203W3WV	PF16TS 4DA258I203W3WV	2-1/8" Deep	5/8" Two Gang
PF16TS 4SA258C203W3WV	PF16TS 4SA258I203W3WV	1-1/2" Deep	5/8" Two Gang
PF16TS 4DA275C203W3WV	PF16TS 4DA275I203W3WV	2-1/8" Deep	3/4" Two Gang
PF16TS 4SA275C203W3WV	PF16TS 4SA275I203W3WV	1-1/2" Deep	3/4" Two Gang

- Other box types, device colors, mud ring depths, brackets and assembly configurations are available. Consult factory for details.
- To change the color of device from ivory (as shown) to white, substitute V (Ivory) with W (White). For ex. PF16TS 4DAC20DV becomes PF16TS 4DAC20DW.
- All receptacles are shipped standard ground up. Add suffix DN for ground down.
- All assemblies shipped standard with metal device protect plates.
- Pre-installed connectors available on all assembly types. Consult factory for details.
- Telescoping Slider Bracket Assemblies are shipped with traditional closed back box, ground screw and stranded leads on box and devices.
- Device leads and push-in connectors are left inside the box and will not be pulled out of knockouts prior to shipment unless specified by customer.

PRE-formance Custom Assemblies



Floor Mount Assemblies with Wiring Devices

Floor Mount Assemblies - all catalog numbers contain a floor mount bracket (BBF18) which positions device at 18" on center, 4" square box, 8" insulated solid box ground wire with one or two pre-wired Eaton's Wiring Devices with leads, push-in connectors and device protect plates.

Certifications & Compliances:

- UL Listed and cUL Listed
- UL File No. E-324733

Floor Mount assemblies with wiring devices

- All assemblies are shown with ivory colored devices. At the end of the catalog number, replace the "V" with "W" for white colored device. Other device colors and types are available. Consult factory for details.

Commonly ordered catalog examples are listed below

- See assembly catalog numbering system at the end of this section for more information on how to construct catalog numbers for almost any customer application

Single Receptacles



Commercial Grade Receptacle	Industrial Grade Receptacle	Hospital Grade Receptacle		
Assembly Catalog Number with CR20V Commercial Grade 20A Duplex Receptacle Installed	Assembly Catalog Number with 5362V Industrial Grade 20A Duplex Receptacle Installed	Assembly Catalog Number with 8300V Hospital Grade 20A Duplex Receptacle Installed	4" Square Steel Back Box	Mud Ring
Single 20A Duplex Receptacle				
PF18FM 4D58C20DV	PF18FM 4D58I20DV	PF18FM 4D58H20DV	2-1/8" Deep	5/8" Single Gang
PF18FM 4S58C20DV	PF18FM 4S58I20DV	PF18FM 4S58H20DV	1-1/2" Deep	5/8" Single Gang
PF18FM 4D75C20DV	PF18FM 4D75I20DV	PF18FM 4D75H20DV	2-1/8" Deep	3/4" Single Gang
PF18FM 4S75C20DV	PF18FM 4S75I20DV	PF18FM 4S75H20DV	1-1/2" Deep	3/4" Single Gang
Double 20A Duplex Receptacle				
PF18FM 4D258C20DDV	PF18FM 4D258I20DDV	PF18FM 4D258H20DDV	2-1/8" Deep	5/8" Two Gang
PF18FM 4S258C20DDV	PF18FM 4S258I20DDV	PF18FM 4S258H20DDV	1-1/2" Deep	5/8" Two Gang
PF18FM 4D275C20DDV	PF18FM 4D275I20DDV	PF18FM 4D275H20DDV	2-1/8" Deep	3/4" Two Gang
PF18FM 4S275C20DDV	PF18FM 4S275I20DDV	PF18FM 4S275H20DDV	1-1/2" Deep	3/4" Two Gang

- Other box types, device colors, mud ring depths, brackets and assembly configurations are available. Consult factory for details.
- To change the color of device from ivory (as shown) to white, substitute V with W (White). For ex. PF18FM 4D58C20DV becomes PF18FM 4D58C20DW.
- All receptacles are shipped standard ground up. Add suffix DN for ground down.
- All assemblies shipped standard with metal device protect plates.
- Pre-installed connectors available on all assembly types. Consult factory for details.

PRE-formance Custom Assemblies

Multi-Mount Assemblies with Wiring Devices

Multi-Mount Assemblies - all catalog numbers contain a multiple mount bracket (available in either 16" stud spanning or 24" stud spanning). Each position may contain an outlet box, 8" insulated solid box ground wire with ground screw, one or two pre-wired Eaton's Wiring Devices with leads, push-in connectors and device protect plates.

Certifications & Compliances:

- UL Listed and cUL Listed
- UL File No. E-324733



Commonly ordered catalog examples are listed below

- See assembly catalog numbering system at the end of this section for more information on how to construct catalog numbers for almost any customer application.



PF3MM 4D58C20DV 5D58 X

- 3MM Bracket - BB816 3-hole Multiple-Mount Bracket for 16" stud spacing
- 4MM Bracket (not shown) - BB824 4 hole Multiple-Mount Bracket for 24" stud spacing



PF16BO 4D58C20DV X 4D258C20DDV

- 16BO Bracket - BB716 Open Mount Bracket for 16" stud spacing
- 24BO Bracket (not shown) - BB724 Open Mount Bracket for 24" stud spacing

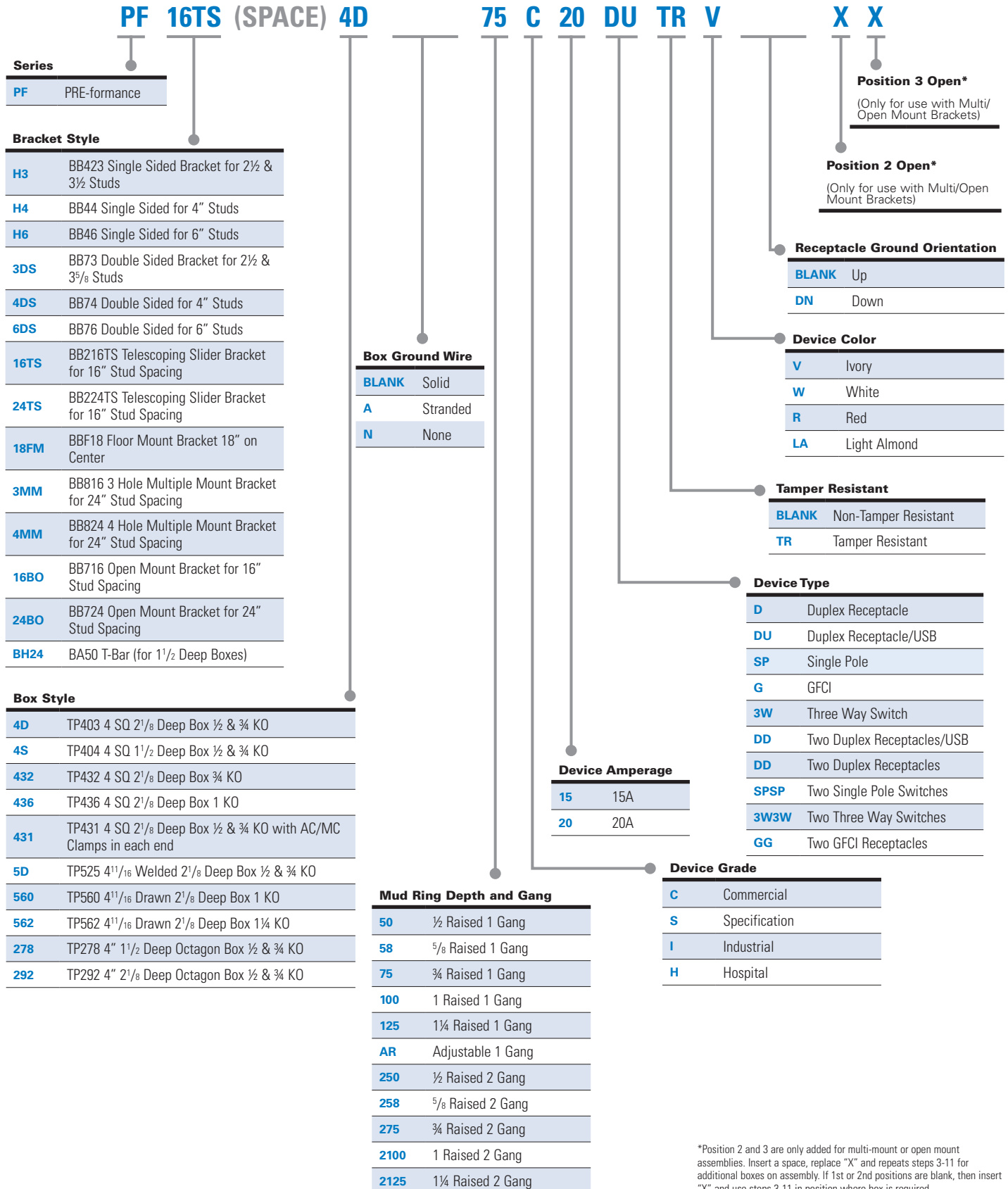
Commonly Ordered Catalog Numbers	Description
PF3MM 4D58C20DV 5D58 X	Assembly - BB816 Multiple Box Bracket, 4" square box with ground screw, lead and back cover, TP489 5/8" raise 1G mud ring, pre-wired CR20V 20A commercial duplex receptacle ivory with leads and push-in connectors and protect plate (not shown), 2nd position TP525 4-11/16" box, TP579 4-11/16" 5/8 raise 1G mud ring, no ground wire
PF16BO 4D58C20DV X 4D58C20DDV	Assembly - BB716 Open Bracket, 4" square back box with ground screw, lead and back cover, TP489 5/8" raise 1G mud ring, pre-wired CR20V 20A commercial duplex receptacle ivory with leads, push-in connectors and protect plate, 2nd position open, 3rd position 4" square box with ground screw, lead and back cover, TP499 5/8" raise 2G mud ring, two pre-wired CR20v 20A commercial duplex receptacles ivory with leads, push-in connectors and protect plates

- Other box types, device colors, mud ring depths, brackets and assembly configurations are available. Consult factory for details.
- To change the color of device from ivory (as shown) to white, substitute V (Ivory) with W (White).
- All receptacles are shipped standard ground up. Add suffix DN for ground down.
- All assemblies shipped standard with metal device protect plates.
- Pre-installed connectors available on all assembly types. Consult factory for details.

PRE-formance Catalog Numbering System

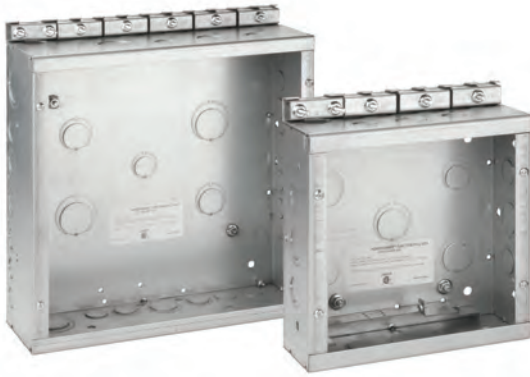
Part number example

PF16TS 4D75C20DU TR V X X



*Position 2 and 3 are only added for multi-mount or open mount assemblies. Insert a space, replace "X" and repeats steps 3-11 for additional boxes on assembly. If 1st or 2nd positions are blank, then insert "X" and use steps 3-11 in position where box is required.

HomeRunner Boxes



Applications:

Crouse-Hinds HomeRunner™ Junction Boxes are designed specifically for commercial construction applications to provide a spacious, flexible junction box for terminating home runs and other electrical wiring. Its patented clamping design and flexibility make it the most convenient labor savings junction box available.

Features:

- Designed and approved for use with AC, MC, MCI-A, NM or EMT
- Patented clamping feature eliminates the need for field punching/drilling of KOs and installation of connectors
- Standard surface or flush cover options - eliminates the need for custom covers
- Multiple mounting holes and knockouts for installation flexibility
- Optional stud bracket for direct mounting to steel or wood studs
- Kick stand far side support available with HR080803
- Available in 2 sizes to match customer requirements and preferences
- Third party certified for US and Canada

Standard Materials:

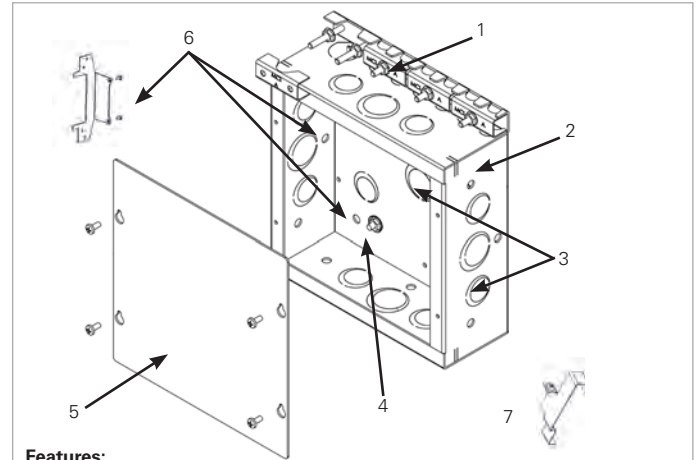
- Enclosure and cover - pre-galvanized steel
- Hardware - zinc plated steel

Certifications & Compliances:

- For US and Canada: CSA File #248782
- Certified to UL50 and UL514B and CSA C22.2, No. 18.3-04 and No. 40-M1989

HomeRunner Ordering Information

Cat. #	Description	Dimensions	Knockouts	Wire Fill	Built In Clamps	Cubic Vol.	Unit Qty.	Wt. Per 100
HR080803	8" x 8" Box	8"H x 8"W x 3"D	(10) ½" & ¾" eccentric, (7) ¾" & 1" eccentric	(7) 14 AWG (6) 12 AWG (5) 10 AWG	(1) 10/3 to 10/12 (5) 14/2 to 10/3	177	5	400
HR121204	12" x 12" Box	12"H x 12"W x 4"D	(9) ½" (8) ½" - ¾" eccentric (6) ¾" - 1" eccentric (6) 1" - 1 ¼" eccentric	(270) 14 AWG (240) 12 AWG (216) 10 AWG	(1) 10/3 to 10/12 (10) 14/2 to 10/3	544	5	800
HRC0808S	Surface Mount Cover	8"H x 8"W x .06"D	-	-	-	-	5	100
HRC0808F	Flush Mount Cover	9.38"H x 9.38"W x .06"D	-	-	-	-	5	160
HRC1212S	Surface Mount Cover	12"H x 12"W x .065"T	-	-	-	-	5	270
HRC1212F	Flush Mount Cover	13.38"H x 13.38"W x .065"T	-	-	-	-	5	230
HRSB1	Stud Bracket	-	-	-	-	-	20	35

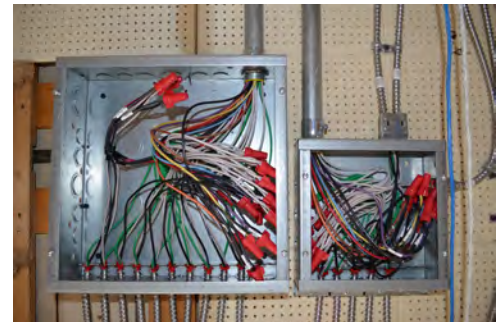


Features:

1. **Patented clamping system** - provides maximum flexibility and maximum grip. Third party certified for use with AC, MC, MCI-A or non-metallic sheathed cable.
2. **Welded steel construction** - provides strong, dependable service and large cubic capacity for ease of wiring.
3. **Combination eccentric knockouts** - on sides for quick and easy access, combination KOs in the back of the box are ideal for applications where joist spacing is too tight for side entry.
4. **Terminal cup washer and flanged nut** - quick, easy service ground termination or attachment of grounding bus-bar.
5. **2 cover options** - square for surface mounted applications or oversized for flush mount applications.
6. **Extensive mounting flexibility** - pre-drilled holes in side and back for direct mounting or for mounting bracket (purchased separately).
7. **Far-side support** - snaps on quickly and easily and is perforated which allows for adjustment in dual thickness, fire-rated walls. Shipped standard with 8" x 8" x 3" models.

Dimensions:

- 8" x 8" x 3"
- 12" x 12" x 4"



PRE-formance Complete

The most complete turn-key solution for commercial construction projects - the ideal solution for commercial buildings with repetitive installations such as hotels, condominiums, commercial and retail offices, hospitals and apartments

PRE-formance Complete delivers:

- Total pre-fabricated branch wiring system custom produced with Eaton's Crouse-Hinds components, labeled, packaged by room and floor, delivered to your exact location
- Lower total cost of ownership
- Simplified material management, improved material handling and job site safety
- Flexibility to allow skill set allocation to match job requirements
- Elimination of job site material "piles" and inefficient searching for pieces and parts at the job site
- Elimination of job site "engineering"
- Reduction of overages and scrap, including expensive wire and cable
- 30% to 40% labor savings over traditional "stick-build" wiring methods for greatly improved job site efficiency



Hotels, Resorts & Conference Centers



Assisted Living Centers & Medical Facilities



Educational Facilities



Military Installations



Condominiums

PRE-performance Complete

From customized take-off and proposal, through kick-off meetings, mock-ups and status meetings, the focus is on delivering the custom solution that will drive job site productivity and help make your job a better job - faster, easier, safer and more profitable.


Customized solution using unique/patented products




- Patented Uni-Mount combination mounting and device plate
- HomeRunner 8 x 8 or 12 x 12 box with patented clamping system. Flush or surface mount cover available
- Quick-Lok™ Pro snap-in fittings listed for use with MC/AC, FMC or MCI-A
- Customized home runs and labeling provides easy circuit identification during construction and for future maintenance requirements.




Detailed proposal which includes complete transparency as to what is included and everything needed for project approval submittals




UNIT 2, DOUBLE A - TYPICAL




UNIT 3, DOUBLE A - TYPICAL




UNIT 4, DOUBLE A - TYPICAL



UNIT 5, DOUBLE A - TYPICAL



UNIT 6, DOUBLE A - TYPICAL



UNIT 7, DOUBLE A - TYPICAL

Crouse-Hinds by ET-N

Hotel Example

Simple Description	33	2	1	3	10	10	72	40	180
	WALL	CEILING	FLOOR	DOOR	WALL	CEILING	WALL	CEILING	WALL
Outlet	4	4	3	4	3	2	2	2	496
Switch	0	0	3	5	5	4	6	0	586
Light Fixture	0	0	1	1	0	0	1	1	120
Outlet + Data	2	2	1	1	2	0	1	1	200
Outlet + Data	0	0	1	1	1	1	1	0	100
Outlet + Data	2	2	1	1	1	1	1	1	220
Cable Tray	1	1	0	1	1	0	1	1	160
Recessed	1	1	1	1	0	1	1	1	160
TVAC	1	1	0	0	0	0	1	0	100
Switch	2	2	3	4	2	3	3	2	458
Light	0	0	0	0	0	0	0	0	20
Light Fixture	1	1	1	1	1	0	1	1	160
Wall Light	1	1	1	1	1	1	1	1	180
Ceiling Light	2	2	0	1	0	0	1	1	200
Downlight	5	0	5	7	8	4	6	4	950
Recessed	10	2	1	3	10	10	72	40	280

Cable Summary	WALL	CEILING	FLOOR	DOOR	WALL	CEILING	WALL	CEILING	WALL
12-3	10	10	87	87	110	29	116	18	1476
8-3	10	10	0	32	31	0	31	0	1

Project take-off summary

Notes: 1. All cable trays are 12" wide.

2. All cable trays are 12" wide.

3. All cable trays are 12" wide.

4. All cable trays are 12" wide.

5. All cable trays are 12" wide.

6. All cable trays are 12" wide.

7. All cable trays are 12" wide.

8. All cable trays are 12" wide.

9. All cable trays are 12" wide.

10. All cable trays are 12" wide.

11. All cable trays are 12" wide.

12. All cable trays are 12" wide.

13. All cable trays are 12" wide.

14. All cable trays are 12" wide.

15. All cable trays are 12" wide.

16. All cable trays are 12" wide.

17. All cable trays are 12" wide.

18. All cable trays are 12" wide.

19. All cable trays are 12" wide.

20. All cable trays are 12" wide.

21. All cable trays are 12" wide.

22. All cable trays are 12" wide.

23. All cable trays are 12" wide.

24. All cable trays are 12" wide.

25. All cable trays are 12" wide.

26. All cable trays are 12" wide.

27. All cable trays are 12" wide.

28. All cable trays are 12" wide.

29. All cable trays are 12" wide.

30. All cable trays are 12" wide.

31. All cable trays are 12" wide.

32. All cable trays are 12" wide.

33. All cable trays are 12" wide.

34. All cable trays are 12" wide.

35. All cable trays are 12" wide.

36. All cable trays are 12" wide.

37. All cable trays are 12" wide.

38. All cable trays are 12" wide.

39. All cable trays are 12" wide.

40. All cable trays are 12" wide.

41. All cable trays are 12" wide.

42. All cable trays are 12" wide.

43. All cable trays are 12" wide.

44. All cable trays are 12" wide.

45. All cable trays are 12" wide.

46. All cable trays are 12" wide.

47. All cable trays are 12" wide.

48. All cable trays are 12" wide.

49. All cable trays are 12" wide.

50. All cable trays are 12" wide.

51. All cable trays are 12" wide.

52. All cable trays are 12" wide.

53. All cable trays are 12" wide.

54. All cable trays are 12" wide.

55. All cable trays are 12" wide.

56. All cable trays are 12" wide.

57. All cable trays are 12" wide.

58. All cable trays are 12" wide.

59. All cable trays are 12" wide.

60. All cable trays are 12" wide.

61. All cable trays are 12" wide.

62. All cable trays are 12" wide.

63. All cable trays are 12" wide.

64. All cable trays are 12" wide.

65. All cable trays are 12" wide.

66. All cable trays are 12" wide.

67. All cable trays are 12" wide.

68. All cable trays are 12" wide.

69. All cable trays are 12" wide.

70. All cable trays are 12" wide.

71. All cable trays are 12" wide.

72. All cable trays are 12" wide.

73. All cable trays are 12" wide.

74. All cable trays are 12" wide.

75. All cable trays are 12" wide.

76. All cable trays are 12" wide.

77. All cable trays are 12" wide.

78. All cable trays are 12" wide.

79. All cable trays are 12" wide.

80. All cable trays are 12" wide.

81. All cable trays are 12" wide.

82. All cable trays are 12" wide.

83. All cable trays are 12" wide.

84. All cable trays are 12" wide.

85. All cable trays are 12" wide.

86. All cable trays are 12" wide.

87. All cable trays are 12" wide.

88. All cable trays are 12" wide.

89. All cable trays are 12" wide.

90. All cable trays are 12" wide.

91. All cable trays are 12" wide.

92. All cable trays are 12" wide.

93. All cable trays are 12" wide.

94. All cable trays are 12" wide.

95. All cable trays are 12" wide.

96. All cable trays are 12" wide.

97. All cable trays are 12" wide.

98. All cable trays are 12" wide.

99. All cable trays are 12" wide.

100. All cable trays are 12" wide.

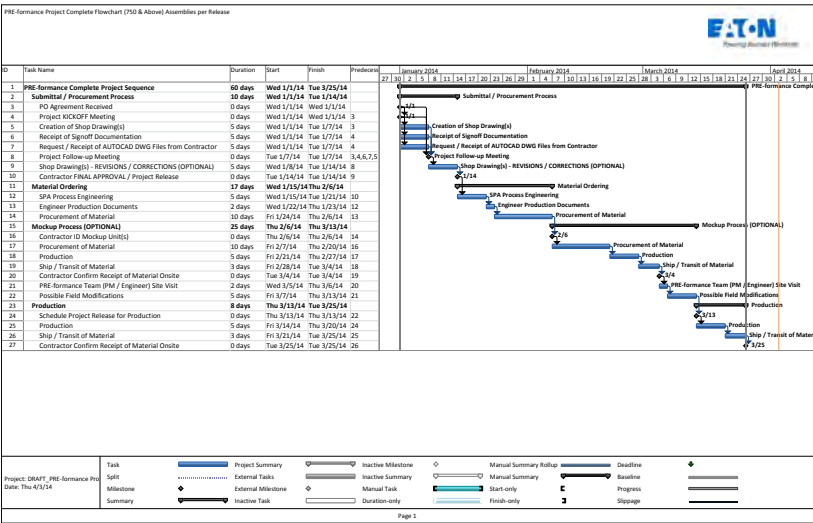
Quotation take-off drawings provided with device highlights and quantity

PRE-formance Complete

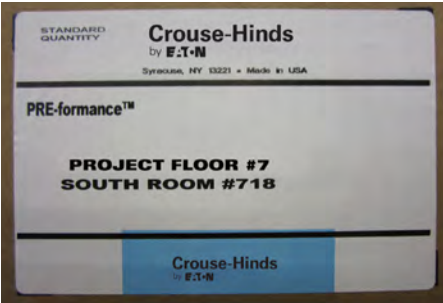
Dedicated factory project management and local sales support and expertise

Customized project management includes:

- Gantt charts
- Secure shared project folders
- Conference calls and site visits



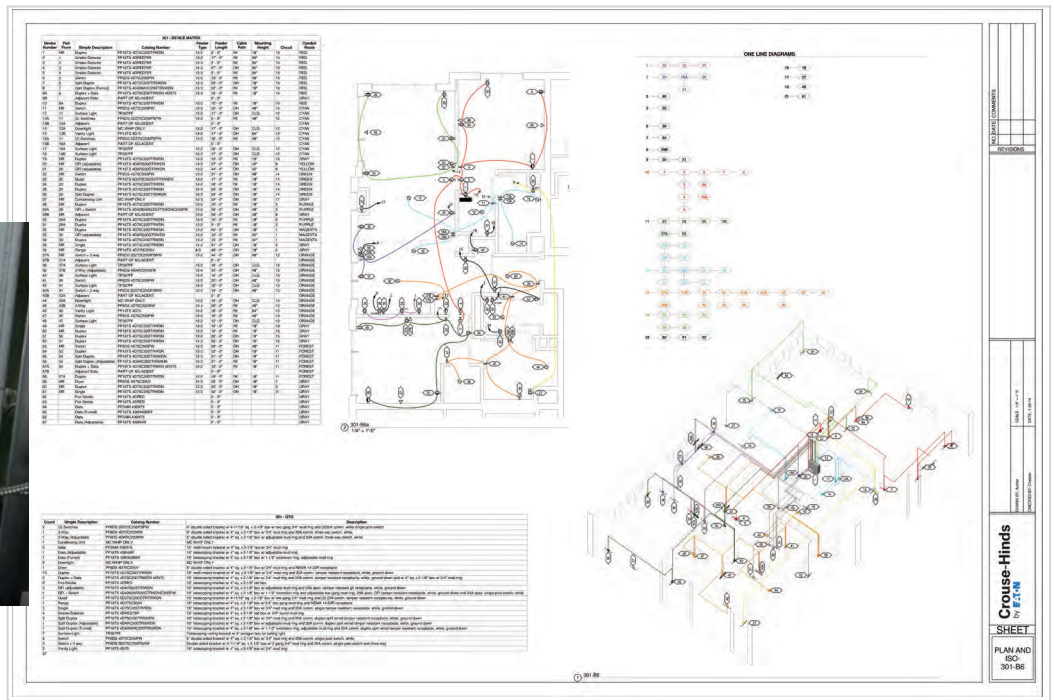
Customized packaging and labeling to simplify job site receiving and handling through job-specific cartons labeled by project floor, unit or area. Ergonomically designed boxes help eliminate the need for special equipment and help reduce material handling risks.



PRE-formance Complete

Customized labels and drawings improve job site layout and provide comprehensive point to point connection data for faster installation and elimination of “field engineering”.

COMPLETE



Project close out meetings to review punch list items (if any) and share lessons learned.



PRE-formance Complete

- Simple, easy to install, UL Listed solution ideal for commercial construction projects and improves job site efficiency
- Modeled by architects and designed by engineers to meet exact project requirements
- Dedicated factory project management and local sales expertise and support
- Product flexibility allows for adjustment on site, if required
- Re-allocates labor, eliminates scrap and material piles, reduces spot buying and consolidates material ordering and receiving
- Helps improve job performance and profitability
- Backed by strength and bankability of Crouse-Hinds and Eaton



See the complete offering of PRE-formance Products at www.crouse-hinds.com.



Commercial Products delivers quality, reliability, labor savings and lower installed cost, all from a single dependable source.

See the complete offering of Commercial Products at www.crouse-hinds.com.

**U.S. (Global Headquarters):
Eaton's Crouse-Hinds Division**

1201 Wolf Street
Syracuse, NY 13208
(866) 764-5454
FAX: (315) 477-5179
Orders Only:
ECHUSAOrders@eaton.com
CrouseCustomerCTR@eaton.com

For more information:

If further assistance is required, please contact an authorized Eaton Distributor, Sales Office, or Customer Service Department.

Canada:

Toll Free: 800-265-0502
FAX: (800) 263-9504
FAX Orders only: (866) 653-0645

Mexico/Latin America/Caribbean:

52-555-804-4000
FAX: 52-555-804-4020
ventascentromex@eaton.com

Europe (Germany):

49 (0) 6271 806-500
49 (0) 6271 806-476
sales.CCH.de@cooperindustries.com

Middle East (Dubai):

971 4 4272500
FAX: 971 4 4298521
chmesales@eaton.com

Singapore:

65-6645-9888
FAX: 65-6297-4819
chsi-sales@cooperindustries.com

China:

86-21-2899-3600
FAX: 86-21-2899-4055
cchsales@cooperindustries.com

Korea:

82-2-3484-6783
82-2-3484-6778
CCHK-sales@cooperindustries.com

Australia:

61-2-8787-2777
FAX: 61-2-9609-2342
CEASales@cooperindustries.com

India:

91-124-4683888
FAX: 91-124-4683899
cchindia@cooperindustries.com

Eaton
1000 Eaton Boulevard
Cleveland, OH 44122
United States
Eaton.com

© 2017 Eaton Corporation
All Rights Reserved
Printed in USA
Form No. 5133-0217
February 2017



Powering Business Worldwide

Eaton's Crouse-Hinds Division
1201 Wolf Street
Syracuse, NY 13208
(866) 764-5454
CrouseCustomerCTR@eaton.com

Eaton is a registered trademark.

All other trademarks are property of their respective owners.