

Eaton's Arrow Hart
Commercial lighting controls

Eaton's Arrow Hart Universal Dimmers and Sensors

Reliable lighting control for
cost-effective commercial installations

Arrow Hart

EATON

Powering Business Worldwide

Universal dimmers

Universal phase selectable slide dimmer



- Switch to select the type of Phase-cut dimming
- Full slide control with preset
- Adjustable low-end trimming for increased lamp compatibility

Product description

Single pole & 3-way
Dimmable **LED/CFL/FLR**; 450W, 120V/AC; 450W, 277V/AC
INC/HAL/ELV; 650W, 120V/AC; 1000W, 277V/AC

Design features

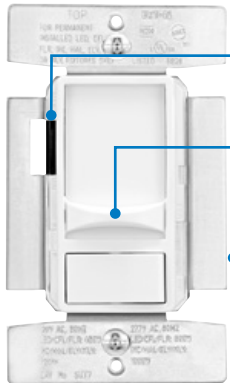
- Dual rated for 120/277V/AC
- No de-rating for LED/CFL loads in multi-gang applications
- Integrated full slide control for easy, precise operation
- Ideal for commercial applications
- Do not use with MLV loads
- Neutral required for installation
- Compatible with any decorator wallplate or screwless decorator wallplate

Universal phase selectable slide dimmer



Description	Compatible lamp types	Rating		Color suffix	Catalog no.
		Watt	V/AC		
Universal phase selectable slide dimmer	LED/CFL/FLR	450	120	BK, GY, LA, V, W	□ SUF7-__
		450	277		
	INC/HAL/ELV	650	120	BK, GY, LA, V, W	
		1000	277		

Universal slide dimmer (forward phase-cut)



- Adjustable low-end trimming for increased lamp compatibility
- Full slide control with preset
- Screw terminals for easy and quick installation

Product description

Single pole & 3-way
Dimmable **LED/CFL/FLR**; 450W, 120V/AC; 600W, 277V/AC
INC/HAL/MLV/ELV; 720W, 120V/AC; 1000W, 277V/AC

Design features

- Universal dimming of most common lighting loads (phase-cut)
- Dual rated for 120/277V/AC
- No de-rating for LED/CFL loads in multi-gang applications
- Integrated full slide control for easy, precise operation
- Ideal for commercial and residential applications
- No neutral required for installation
- Compatible with any decorator wallplate or screwless decorator wallplate

Universal slide dimmer



Description	Compatible lamp types	Rating		Color suffix	Catalog no.
		Watt	V/AC		
Universal slide dimmer (forward phase-cut)	LED/CFL/FLR	450	120	BK, GY, LA, V, W	□ SUT7-__
		600	277		
	INC/HAL/MLV/ELV	720	120	BK, GY, LA, V, W	
		1000	277		

Color ordering information

For ordering devices, include Catalog no. followed by the color suffix: BK (Black), GY (Gray), LA (Light Almond), V (Ivory), W (White)



Compliances, specifications and availability are subject to change without notice.

Decorator & slide dimmers

Decorator dimmers



- Integrated full-slide control for easy, precise operation
- Adjustable high-end trimming for optimal dimming operation

Product description

Single pole & 3-way
1200W @ 120V/AC; 1600W @ 277V/AC
0-10VDC **FLR** and **LED** ballasts

Design features

- Preset feature allows user to return to previous light level when turning lights ON
- Can be wired as single pole or 3-way
- Decorator dimmers have removable faceplates to allow for color changes and each package includes three colors
- Color change kits
- Compatible with dimmable LED and fluorescent 0-10V ballasts
- Neutral is not required for installation of device
- Compatible with any decorator wallplate or screwless decorator wallplate

Decorator dimmers

Description	Compatible lamp types	Rating Watt	Rating V/AC	Color suffix	Catalog no.
Decorator dimmer single pole/3-way preset	0-10VDC LED/FLR	1200 1600	120 277	C2, C4, C5	<input type="checkbox"/> DF10P-__
Color change faceplate for DF10P	—	—	—	B, BK, GY, LA, V, W	<input type="checkbox"/> DCK1-__

Slide dimmers



- Integrated full-slide control for easy, precise operation
- Adjustable high-end trimming for optimal dimming operation

Product description

Single pole & 3-way
1200W @ 120V/AC; 1600W @ 277V/AC
0-10VDC **FLR** and **LED** ballasts

Design features

- Preset feature allows user to return to previous light level when turning lights ON
- Can be wired as single pole or 3-way
- Compatible with dimmable LED and fluorescent 0-10V ballasts
- Neutral is not required for installation of device
- Compatible with any decorator wallplate or screwless decorator wallplate

Slide dimmer

Description	Compatible lamp types	Rating Watt	Rating V/AC	Color suffix	Catalog no.
Slide dimmer single pole/3-way preset	0-10VDC LED/FLR	1200 1600	120 277	B, BK, GY, LA, V, W	<input type="checkbox"/> SF10P-__

Color ordering information

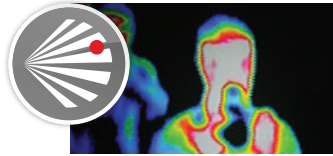
For ordering devices, include Catalog no. followed by the color suffix: B (Brown), BK (Black), GY (Gray), LA (Light Almond), V (Ivory), W (White), C2 (Color Change Kit: LA, W, V), C4 (Color Change Kit: BK, W, V), C5 (Color Change Kit: BK, W, GY)

B	BK	GY	LA	V	W
(Brown)	(Black)	(Gray)	(Light Almond)	(Ivory)	(White)
LA	W	V	BK	W	V
C2 Color Kit			C4 Color Kit		C5 Color Kit
LA (Light Almond), W (White), V (Ivory)			BK (Black), W (White), V (Ivory)		BK (Black), W (White), GY (Gray)

Compliances, specifications and availability are subject to change without notice.

Eaton's Sensor Technology Defined

Different types of **sensor technologies** have been designed to overcome a variety of diverse room layout challenges and optimize **energy savings**



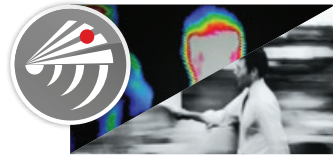
Passive Infrared (PIR) Sensors

- Detects motion from heat emitting sources (people)
- Requires direct line-of-sight
- Best in applications to detect larger movements, or "Major Motion"



Ultrasonic Sensors

- Emits low intensity, inaudible sound
- Detects motion based on changes in sound waves (Doppler principle)
- Volumetric in nature, no line-of-sight required
- Excellent for detecting small movements, or "Minor Motion", and rooms with potential obstructions like bathrooms or libraries



Dual Technology

- Combines PIR and Ultrasonic technology
- Requires BOTH technologies to be triggered to turn lights ON, but will accept either PIR or Ultrasonic signal to maintain lights ON
- Helps eliminate false ON and OFF activity
- Greatest sensitivity and coverage area, for both Major and Minor Motion

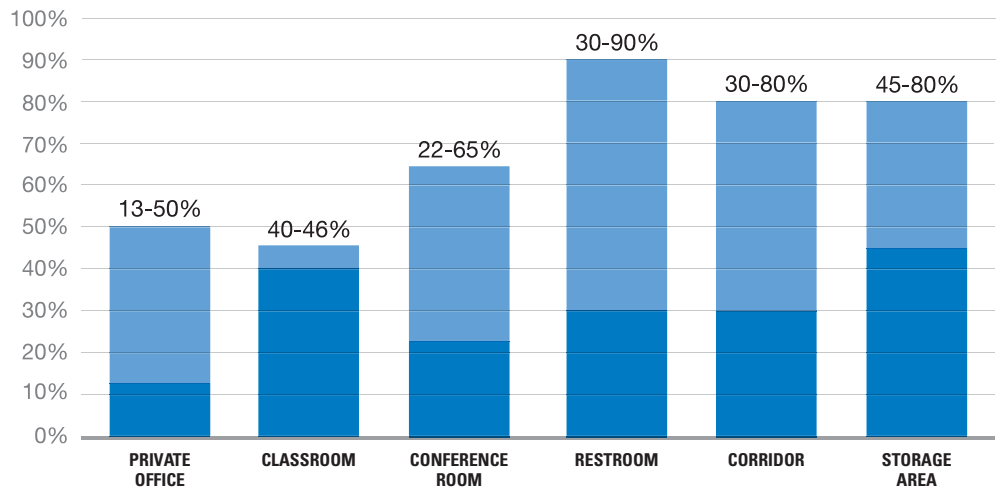
Potential energy saved by room type

Significant return on investment can be realized by installing Eaton's commercial lighting controls

Reduce energy consumption

Save money

Reduce carbon footprint



Matching technology with the right environment

Application and environment are critical to selecting the right sensor to optimize functionality and maximize return on investment.

	PIR Wall Mount	Dual Technology Wall Mount	PIR Ceiling Mount	Ultrasonic Ceiling Mount
Coverage Type	Line-of-sight	Complete coverage, line-of-sight, volumetric	Line-of-sight	Volumetric
Appropriate Environments	Smaller enclosed spaces with no obstructions	Fluctuating activity levels, very low motion levels	Spaces where sensor has a line-of-sight to occupant	Open spaces with obstacles, very low motion levels
Inappropriate Environments	Very low motion levels, obstacles blocking the sensor from the occupant	Large open spaces	Very low motion levels, obstacles blocking the sensor from the occupant	Very high ceilings, extreme air flow or vibration

0-10V Dimmer sensors

Occupancy & vacancy dimmer sensors



- Full-range preset dimming control
- Color matched, tamper resistant lens
- Green LED indicates motion detection
- Selectable time delay with manual OFF

Product description

Single pole & 3-way
 10A @ 120V/AC
 8A @ 277V/AC
 0-10VDC **FLR** and **LED** ballasts

Design features

- 3 in 1 device combining dimming, switching and motion sensing
- Digital PIR sensor for occupancy (Auto ON/Auto OFF) and vacancy (Manual ON/Auto OFF) sensing
- Provides 180 degree field of view and 1000 sq. ft. of major motion coverage
- Selectable ambient light override in occupancy sensor models
- Selectable time delay of 15 seconds (Test mode, changes to 2 minutes after 2 minutes of powering up), 5 minutes (factory default), 15 minutes and 20 minutes
- Occupancy Sensor version can be toggled between Auto ON/Auto OFF or Manual ON/Auto OFF
- Neutral required for installation of device
- Compatible with any decorator wallplate or screwless decorator wallplate
- Title 24 compliant (VS10D7)

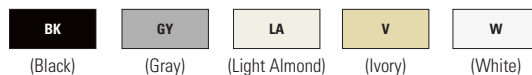
Occupancy & vacancy dimmer sensors



Description	Compatible lamp types	Rating		Color suffix	Catalog no.	TITLE 24
		Watt	V/AC			
Occupancy sensor & dimmer with LED single pole/3-way preset	0-10VDC LED/FLR	1200 2200	120 277	BK, GY, LA, V, W	<input type="checkbox"/> OS10D7-__	
Vacancy sensor & dimmer with LED single pole/3-way preset	0-10VDC LED/FLR	1200 2200	120 277	BK, GY, LA, V, W	<input type="checkbox"/> VS10D7-__	•

Color ordering information

For ordering devices, include Catalog no. followed by the color suffix: BK (Black), GY (Gray), LA (Light Almond), V (Ivory), W (White)



Compliances, specifications and availability are subject to change without notice.

TITLE 24 Indicates Title 24 compliant

Commercial wallbox sensors

Wallbox sensors

Design features

- Selectable automatic ON mode or manual ON mode
- Convenient installation and test mode for set up
- Adjustable built-in light level sensor for additional energy savings
- Selectable time delay
- For use with incandescent lamps, halogen fixtures, electronic and magnetic fluorescent ballasts, and electrical motor loads
- Dual rated: 120V and 277V in the same unit
- Single pole or 3-way wiring
- Manual OFF push button can be used in either automatic or manual mode
- Reinforced lens is tamper-resistant
- Zero-crossing switching technology to maximize relay life and ensure wall switch longevity
- Wallplate included with OSP10 & OSD10 models
- Fits standard size decorator wallplate
- Title 24 compliant



OSP10



OSP10M



OSD10DN

Wire leads – wall mount PIR with instinct (no neutral)



Coverage area	Description	Color suffix	Catalog no.
1000 sq. ft. major motion (92.2 sq. m) 300 sq. ft. minor motion (27.9 sq. m)	180° passive infrared single relay occupancy sensing wall switch	BK, GY, LA, V, W	<input type="checkbox"/> OSP10-__
	180° passive infrared dual relay occupancy sensing wall switch	BK, GY, LA, V, W	<input type="checkbox"/> OSP10D-__

cULus listed

Wire leads – wall mount PIR (no neutral)



Coverage area	Description	Color suffix	Catalog no.
1000 sq. ft. major motion (92.2 sq. m) 300 sq. ft. minor motion (27.9 sq. m)	180° passive infrared single relay occupancy sensing wall switch	BK, GY, LA, V, W	<input type="checkbox"/> OSP10M-__

cULus listed

Wire leads – wall mount dual tech with instinct (neutral required)



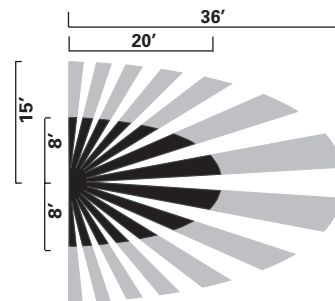
Coverage area	Description	Color suffix	Catalog no.
1000 sq. ft. major motion (92.2 sq. m) 300 sq. ft. minor motion (27.9 sq. m)	180° dual tech single relay occupancy sensing wall switch	BK, GY, LA, V, W	<input type="checkbox"/> OSD10N-__
	180° dual tech dual relay occupancy sensing wall switch	BK, GY, LA, V, W	<input type="checkbox"/> OSD10DN-__

cULus listed

Electronic specifications

OSP10, OSP10D, OSD10N, OSD10DN	OSP10M
Power requirements: 120/277V/AC @ 60Hz	Power requirements: 120/277V/AC @ 60Hz
Maximum load: Incandescent/halogen: @120V/AC, 6.7A, 800W, 60Hz Fluorescent: @120V/AC, 10A, 1200W, 60Hz @277V/AC, 9.8A, 2700W, 60Hz Motor: @120V/AC, 1/4 HP @125 V/AC	Maximum load: Incandescent/halogen: @120V/AC, 60Hz, 15A, 1800W Magnetic ballast (Fluorescent, MLV): @120V/AC, 60Hz, 15A, 1800VA @277V/AC, 60Hz, 8A, 2200VA Electronic ballast (Fluorescent, CFL/LED/ELV lighting): @120V/AC, 60Hz, 10A, 1200VA @277V/AC, 60Hz, 8A, 2200VA Motor: @120V/AC, 60Hz, 1/2 Hp

Coverage area



Minor Motion, IR
Major Motion, IR

Maximum coverage area may vary somewhat according to room shape and the presence of obstacles.

Color ordering information

For ordering devices, include Catalog no. followed by the color suffix: BK (Black), GY (Gray), LA (Light Almond), V (Ivory), W (White)



Compliances, specifications and availability are subject to change without notice.

Commercial ceiling sensors

Commercial ceiling sensors

Product description

Coverage: 500, 1000, 2,000 sq ft

Frequency: 40, 32kHz

Technology: Dual technology, Passive infrared (PIR), Ultrasonic

Commercial ceiling sensors sample number:

AHAC - DT - 0501 - DMV



AHAC-U-2000-MV

Technology
DT = Dual Tech
P = Passive Infrared (PIR)
U = Ultrasonic

Design features

- MicroSet self-adjusting time delay and sensitivity
- Products tested to NEMA WD 7 - 2011 Occupancy Motion Sensors Standard
- Built-in light level sensor
- Selectable walk-through mode
- Title 24 Compliant



AHAWC-DT-120W



AHSP20-MV

Commercial ceiling sensors RoHS

Description	Coverage	Field of view	Frequency	Features	Catalog no.
MicroSet dual tech low voltage	500 sq. ft.	One way (180°)	40 kHz	—	<input type="checkbox"/> AHAC-DT-0501
	1,000 sq. ft.	Two way (360°)	32 kHz	—	<input type="checkbox"/> AHAC-DT-1000
	2,000 sq. ft.	Two way (360°)	32 kHz	—	<input type="checkbox"/> AHAC-DT-2000
MicroSet dual tech line voltage	2,000 sq. ft.	Two way (360°)	32 kHz	Dual relay with daylight sensor	<input type="checkbox"/> AHAC-DT-2000-DMV
	2,000 sq. ft.	Two way (360°)	32 kHz	With daylight sensor	<input type="checkbox"/> AHAC-DT-2000-MV
MicroSet PIR low voltage	500 sq. ft.	(360°)	—	—	<input type="checkbox"/> AHAC-P-0500
	1,500 sq. ft.	(360°)	—	—	<input type="checkbox"/> AHAC-P-1500
MicroSet PIR line voltage	500 sq. ft.	(360°)	—	With daylight sensor	<input type="checkbox"/> AHAC-P-0500-MV
	500 sq. ft.	(360°)	—	Dual relay with daylight sensor	<input type="checkbox"/> AHAC-P-0500-DMV
	1,500 sq. ft.	(360°)	—	With daylight sensor	<input type="checkbox"/> AHAC-P-1500-MV
	1,500 sq. ft.	(360°)	—	Dual relay with daylight sensor	<input type="checkbox"/> AHAC-P-1500-DMV
MicroSet ultrasonic low voltage	500 sq. ft.	One way (180°)	40 kHz	—	<input type="checkbox"/> AHAC-U-0501
	1,000 sq. ft.	Two way (360°)	32 kHz	—	<input type="checkbox"/> AHAC-U-1000
	2,000 sq. ft.	Two way (360°)	32 kHz	Dual relay with daylight sensor	<input type="checkbox"/> AHAC-U-2000
MicroSet ultrasonic line voltage	2,000 sq. ft.	Two way (360°)	32 kHz	Dual relay with daylight sensor	<input type="checkbox"/> AHAC-U-2000-DMV
	2,000 sq. ft.	Two way (360°)	32 kHz	With daylight sensor	<input type="checkbox"/> AHAC-U-2000-MV
Dual tech wall/corner sensor	1,200 sq. ft.	Wide angle (120°)	—	—	<input type="checkbox"/> AHAWC-DT-120W
Passive infrared wall/corner sensor	1,200 sq. ft.	Wide angle (120°)	—	—	<input type="checkbox"/> AHAWC-P-120W
	90 linear ft.	(180°)	—	—	<input type="checkbox"/> AHAWC-P-009L-H
MicroSet STEM accessory	—	—	—	—	<input type="checkbox"/> AHAC-STEM
Heavy duty switch pack	—	—	—	Capable of switching up to 20A	<input type="checkbox"/> AHSP20-MV

Color information

W (White)



(White)

Compliances, specifications and availability are subject to change without notice.

We make what matters work.*

* At Eaton, we believe that power is a fundamental part of just about everything people do. Technology, transportation, energy and infrastructure-these are things the world relies on every day. That's why Eaton is dedicated to helping our customers find new ways to manage electrical, hydraulic and mechanical power more efficiently, safely and sustainably. To improve people's lives, the communities where we live and work, and the planet our future generations depend upon. Because that's what really matters. And we're here to make sure it works.

See more at Eaton.com/whatmatters

Visit our website:
www.eaton.com/wiringdevices

Electrical Sector
203 Cooper Circle
Peachtree City, GA 30269
United States
Eaton.com
Eaton.com/wiringdevices

Eaton
1000 Eaton Boulevard
Cleveland, OH 44122
United States
Eaton.com

© 2019 Eaton
All Rights Reserved
Printed in USA
Publication No. BR620020EN
September 2019

Electrical Sector
Canada Operations
5925 McLaughlin Road
Mississauga, Ontario, L5R 1B8
Canada
EatonCanada.ca
Eaton.com/wiringdevices

Eaton is a registered trademark.

All other trademarks are property of their respective owners.

Electrical Sector
Mexico Operations
Carr. Tlalnepantla -
Cuautitlan Km 17.8 s/n
Col. Villa Jardin esq.
Cerrada 8 de Mayo
Cuautitlan, Mexico CP 54800
Mexico
Eaton.mx
Eaton.com/wiringdevices

Follow us on social media to get the latest product and support information.

