

## SPECIFICATION SHEET

### 2110 SERIES cUL<sup>®</sup>us SPECIFICATION GRADE 1/2" CONDUIT MOUNTING DIE CAST ALUMINUM PHOTOCONTROL

#### APPLICATIONS

- Parking lot lighting.
- Building perimeter lighting.
- Outdoor signs.

#### FEATURES

##### SENSOR:

Conformal coated cadmium sulphide photocell resists effects of moisture and airborne contaminants. Photocell responds to the light spectrum near to that of a human eye.

##### STANDARDS:

Meets ANSI/UL773A.

##### OPERATION:

Delay of up to two minutes to prevent false switching due to light from passing vehicles, lightning, etc.

##### HOUSING:

Die cast aluminum housing and base. Gasketed for weather protection.

##### ENERGY SAVINGS:

Works with screw base CFLs.

#### SPECIFICATIONS

##### ON/OFF:

Turn ON is 1 to 5fc, Turn OFF is 3 to 15fc, without the slide in position. ON/OFF adjustment is easily made by moving a slide cover. No tools required.

##### TIME DELAY:

ON and OFF.

##### CELL:

Cadmium sulphide, epoxy conformal coated 1/2" diameter.

MODEL 2117 is 1" cell.

##### CONTACTS:

Remain closed between dusk and dawn (the unit fails in the ON position).

##### LEAD WIRES:

Three color coded, minimum 6" wire leads, #16AWG, rated for 105 °C. (2117 #10AWG red and black).

##### POWER CONSUMPTION:

Averages under 1 watt.

##### TEMPERATURE RANGE:

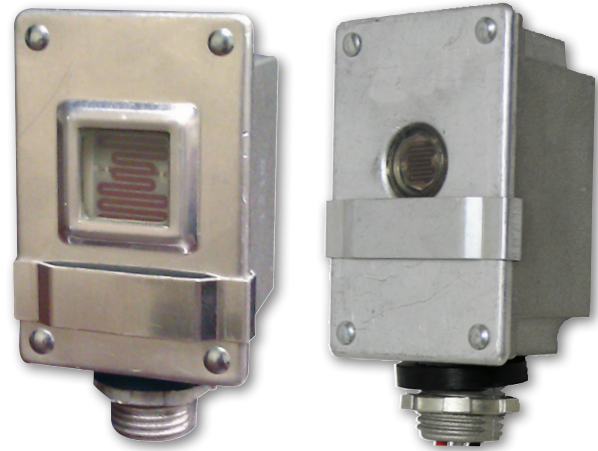
-40 °F to 140 °F (-40 °C to 60 °C).

##### FAIL MODE:

ON.

##### WARRANTY:

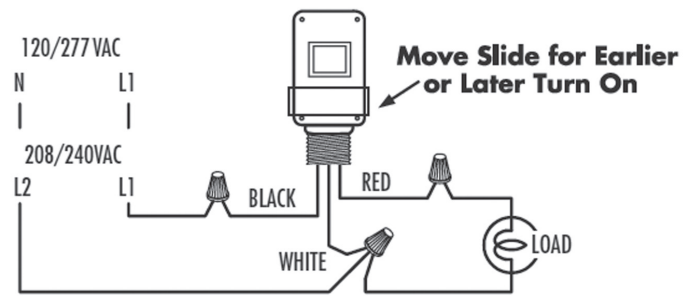
5 years.



2117

2115 & 2116

#### WIRING DIAGRAMS



#### ORDERING INFO

CAT. NO.	UPC CODE	VOLTAGE (VAC) 50-60Hz
2115	60032	120
2116	60033	208-277
2117*	60037	120
73866	62020	Mounting Bracket

\*Not UL or CSA rated.

#### CONTACT RATINGS

CAT. NO.	SWITCH	RATING	
		TUNGSTEN	BALLAST
2115	SPST	2000W	1800VA
2116	SPST	3470-4620W	2080-2770VA
2117*	SPST	3000W	3000VA
73866	—	—	—

\*Not UL or CSA rated.

## SPECIFICATION SHEET

### 2110 SERIES cULus SPECIFICATION GRADE 1/2" CONDUIT MOUNTING DIE CAST ALUMINUM PHOTOCONTROL

#### APPLICATIONS

- Parking lot lighting.
- Building perimeter lighting.
- Outdoor signs.

#### FEATURES

##### SENSOR:

Conformal coated cadmium sulphide photocell resists effects of moisture and airborne contaminants. Photocell responds to the light spectrum near to that of a human eye.

##### STANDARDS:

Meets ANSI/UL773A.

##### OPERATION:

Delay of up to two minutes to prevent false switching due to light from passing vehicles, lightning, etc.

##### HOUSING:

Die cast aluminum housing and base. Gasketed for weather protection.

##### ENERGY SAVINGS:

Works with screw base CFLs.

#### SPECIFICATIONS

##### ON/OFF:

Turn ON is 1 to 5fc, Turn OFF is 3 to 15fc, without the slide in position. ON/OFF adjustment is easily made by moving a slide cover. No tools required.

##### TIME DELAY:

ON and OFF.

##### CELL:

Cadmium sulphide, epoxy conformal coated 1/2" diameter.

MODEL 2117 is 1" cell.

##### CONTACTS:

Remain closed between dusk and dawn (the unit fails in the ON position).

##### LEAD WIRES:

Three color coded, minimum 6" wire leads, #16AWG, rated for 105 °C. (2117 #10AWG red and black).

##### POWER CONSUMPTION:

Averages under 1 watt.

##### TEMPERATURE RANGE:

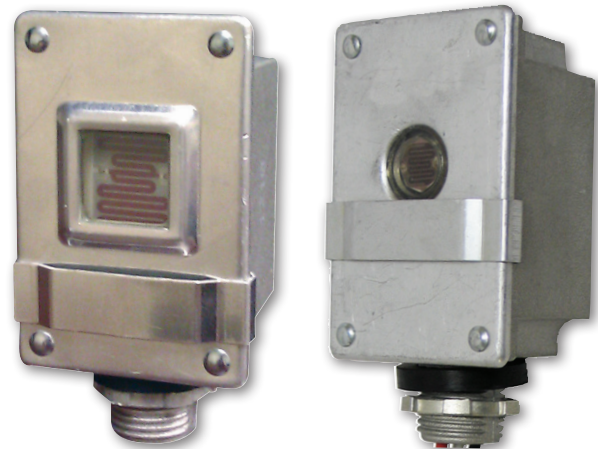
-40 °F to 140 °F (-40 °C to 60 °C).

##### FAIL MODE:

ON.

##### WARRANTY:

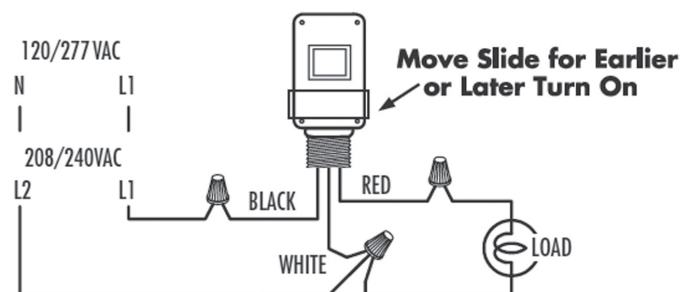
5 years.



2117

2115 & 2116

#### WIRING DIAGRAMS



#### ORDERING INFO

CAT. NO.	UPC CODE	VOLTAGE (VAC) 50-60Hz
2115	60032	120
2116	60033	208-277
2117*	60037	120
73866	62020	Mounting Bracket

\*Not UL or CSA rated.

#### CONTACT RATINGS

CAT. NO.	SWITCH	RATING	
		TUNGSTEN	BALLAST
2115	SPST	2000W	1800VA
2116	SPST	3470-4620W	2080-2770VA
2117*	SPST	3000W	3000VA
73866	—	—	—

\*Not UL or CSA rated.