

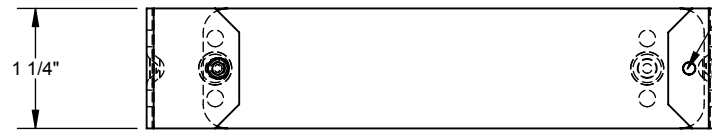


Catalog Number: 66GC
Item Description: WIREWAY ACCESSORY
UPC Code: 784572108370

Brand Name: Milbank
Type: Wireway Connector
Application: Wireway Accessory
Standard: UL Listed, Type 1
Cover Type: Screw Cover
Enclosure: Indoor Enclosure
Nominal Cross Section: 6x6
Material: Steel with Powder Coat Finish
Finish: ANSI 61 Gray
Knockouts: False



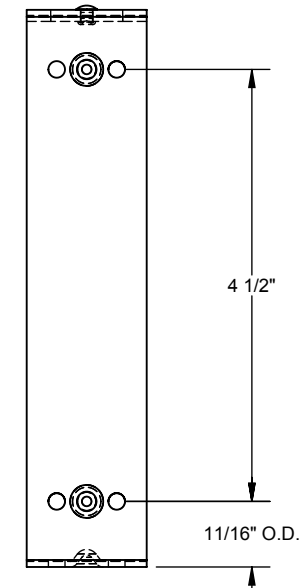
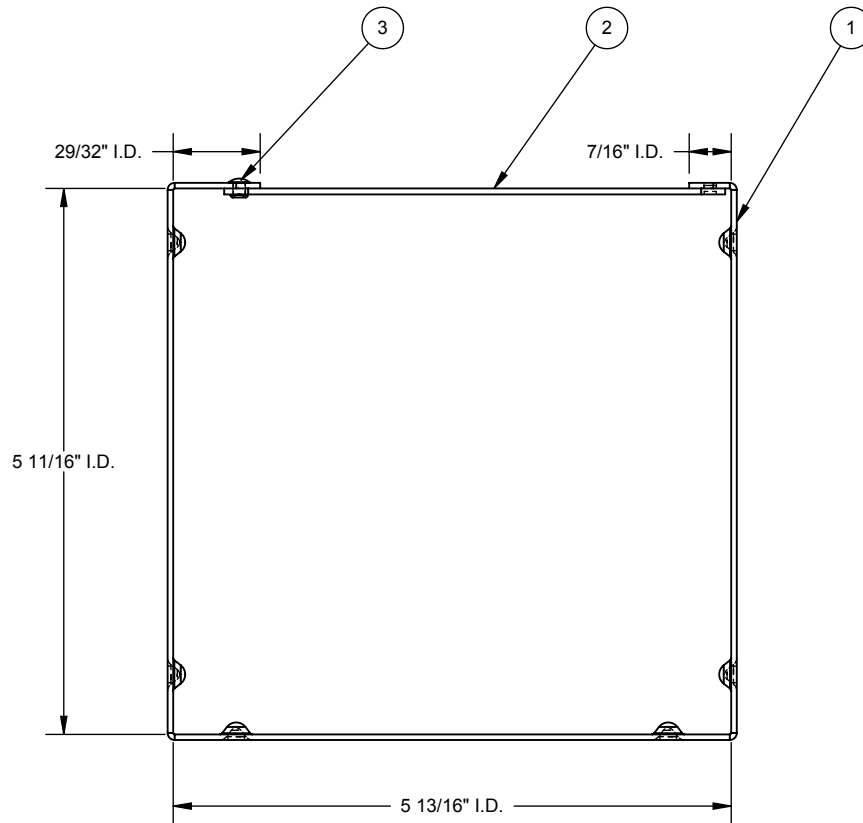
Utility requirements may vary. Always consult the serving utility for their requirements prior to ordering or installing this equipment. This product must always be installed by a licensed electrician. Installation of this equipment may require local electrical inspector approval.




HALF SHEAR IN TOP STRAP MUST
ENGAGE HOLE IN CONNECTOR STRAP

ITEM	QTY.	PART NUMBER	DESCRIPTION
1	1	1002325	CONN. STRAP FOR 66GC
2	1	1002324	TOP STRAP
3	1	1000040	RIVET .125 X .218
4	0.02	1002968	CARTON 50-PER (NOT SHOWN)

CATALOG NO.	M2K #
66GC	#1003170
RC-66GC	#1125203
SPC-66	#1133202



NEMA NUMBER.: #306

Material:	16 GA. STEEL		
Shear/ Die#:			
Finish:			General Offices: Kansas City, MO
Part Wt.:			Title: CONNECTOR FOR 6 X 6 WIREWAY
Tolerances: Unless Specified Otherwise X.X ±.1 X.XX ±.03 X.XXX ±.015 X" ±2"		Third Angle	Catalog No.: (SEE CHART)
Scale: NTS		Checked By:	Customer:
Drawn By: DL		Approved By:	Drawing No.: 1003170
		Date:	3-20-13 Sheet 1 of 1

REV.	DATE	DESCRIPTION	BY
F1	3-20-13	REDRAWN IN SW; UPDATED TO M2K; DWG NUMBER WAS 306 (ECO #23667)	DL



Catalog Number: 66GC
Item Description: WIREWAY ACCESSORY
UPC Code: 784572108370

Brand Name: Milbank
Type: Wireway Connector
Application: Wireway Accessory
Standard: UL Listed, Type 1
Cover Type: Screw Cover
Enclosure: Indoor Enclosure
Nominal Cross Section: 6x6
Material: Steel with Powder Coat Finish
Finish: ANSI 61 Gray
Knockouts: False



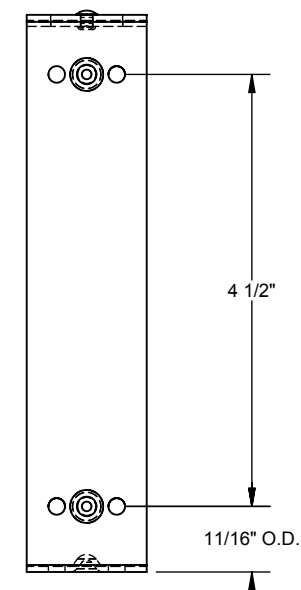
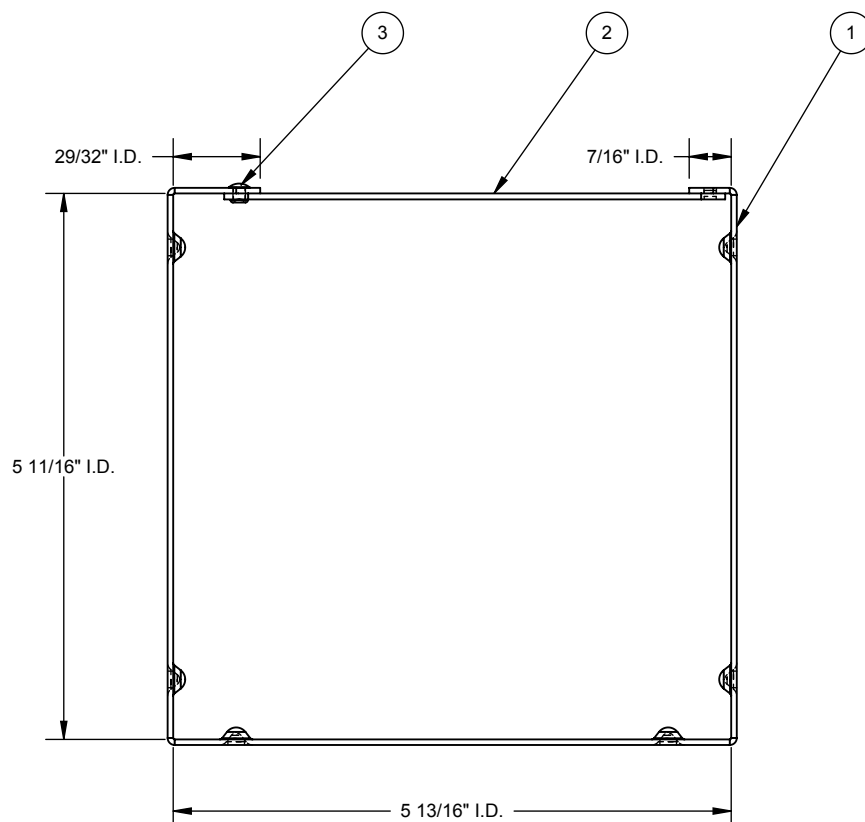
Utility requirements may vary. Always consult the serving utility for their requirements prior to ordering or installing this equipment. This product must always be installed by a licensed electrician. Installation of this equipment may require local electrical inspector approval.




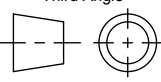
HALF SHEAR IN TOP STRAP MUST
ENGAGE HOLE IN CONNECTOR STRAP

ITEM	QTY.	PART NUMBER	DESCRIPTION
1	1	1002325	CONN. STRAP FOR 66GC
2	1	1002324	TOP STRAP
3	1	1000040	RIVET .125 X .218
4	0.02	1002968	CARTON 50-PER (NOT SHOWN)

CATALOG NO.	M2K #
66GC	#1003170
RC-66GC	#1125203
SPC-66	#1133202



NEMA NUMBER.: #306

Material:	16 GA. STEEL		
Shear/ Die#:			
Finish:		General Offices: Kansas City, MO	
Part Wt.:		Title:	CONNECTOR FOR 6 X 6 WIREWAY
Tolerances: Unless Specified Otherwise X.X ±.1 X.XX ±.03 X.XXX ±.015 X" ±2"		Catalog No.:	(SEE CHART)
Third Angle 		Customer:	
Scale:	NTS	Drawing No.:	1003170
Drawn By:	DL	Date:	3-20-13
Checked By:		Sheet	1 of 1
Approved By:			

REV.	DATE	DESCRIPTION	BY
F1	3-20-13	REDRAWN IN SW; UPDATED TO M2K; DWG NUMBER WAS 306 (ECO #23667)	DL