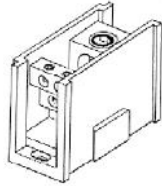
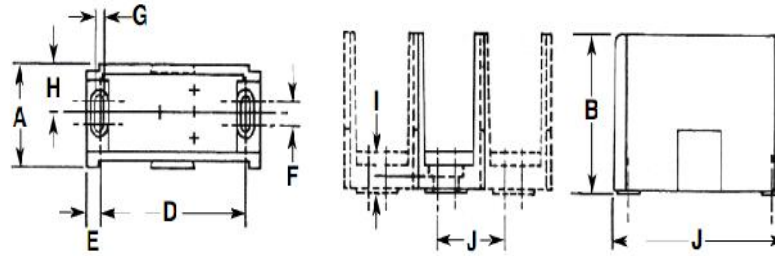


Connector Bloks™



Drawn - SD
Approved - KM

Title - Connector Bloks™

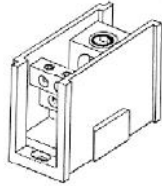


Dual Rated Connector Bloks

Insulator Cat. No	A	B	C	D	E	F	G	H	I	J	
S	1.04	2.34	2.90	2.25	0.18	0.35	0.20	0.46	0.19	0.63	1.25
M	1.71	2.62	4.00	3.50	0.25	0.37	0.20	0.79	0.20	1.25	1.87
L	2.90	3.25	5.50	5.00	0.25	0.50	0.27	1.38	0.29	2.25	3.25

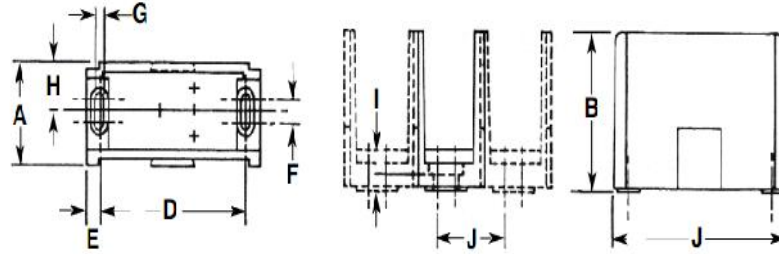
Part Number	Temp Rating	Insulator Block			Amps Per Pole	L	W	H	Insulator Block Size
		Line Side	Load Side						
AS-I1-I1	90 C	 2-14 AWG	 2-14 AWG		2.90	1.04	2.34	S	
AS-K1-K1	90 C	 2/0-14 AWG	 2/0-14 AWG		2.90	1.04	2.34	S	
AM-N1-N1	90 C	 250MCM-6AWG	 250MCM-6AWG		4.00	1.71	2.62	M	
AM-P1-P1	90 C	 350MCM-6AWG	 350MCM-6AWG		4.00	1.71	2.62	M	
AM-R1-R1	90 C	 500MCM-4AWG	 500MCM-4AWG		4.00	1.71	2.62	M	
AS-K2-K2	90 C	 2/0-14AWG	 2/0-14 AWG		2.90	1.04	2.34	S	
AL-P2-P2	90 C	 350MCM-6AWG	 350MCM-6AWG		5.50	2.90	3.25	L	
AL-R2-R2	90 C	 500MCM-4AWG	 500MCM-6AWG		5.50	2.90	3.25	L	

Connector Bloks™















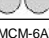
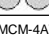
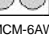
Drawn - SD
Approved - KM

Title - Connector Bloks™



Dual Rated Connector Bloks

Insulator Cat. No	A	B	C	D	E	F	G	H	I	J	
S	1.04	2.34	2.90	2.25	0.18	0.35	0.20	0.46	0.19	0.63	1.25
M	1.71	2.62	4.00	3.50	0.25	0.37	0.20	0.79	0.20	1.25	1.87
L	2.90	3.25	5.50	5.00	0.25	0.50	0.27	1.38	0.29	2.25	3.25

Part Number	Temp Rating	Line Side	Load Side	Amps Per Pole	Insulator Block			Insulator Block Size
					L	W	H	
AS-I1-I1	90 C	 2-14 AWG	 2-14 AWG	115	2.90	1.04	2.34	S
AS-K1-K1	90 C	 2/0-14 AWG	 2/0-14 AWG	175	2.90	1.04	2.34	S
AM-N1-N1	90 C	 250MCM-6AWG	 250MCM-6AWG	310	4.00	1.71	2.62	M
AM-P1-P1	90 C	 350MCM-6AWG	 350MCM-6AWG	350	4.00	1.71	2.62	M
AM-R1-R1	90 C	 500MCM-4AWG	 500MCM-4AWG	380	4.00	1.71	2.62	M
AS-K2-K2	90 C	 2/0-14AWG	 2/0-14 AWG	350	2.90	1.04	2.34	S
AL-P2-P2	90 C	 350MCM-6AWG	 350MCM-6AWG	620	5.50	2.90	3.25	L
AL-R2-R2	90 C	 500MCM-4AWG	 500MCM-4AWG	760	5.50	2.90	3.25	L