



HALO[®]

BLD Series
Surface LED Downlight



- 4" aperture low profile surface mounting options
- Two distinct lumen packages & CCT configurations available in both apertures
- 600 lumen package is available in 3000K
- 800 lumen package is available with field SeleCCTable CCT - 2700K|3000K|3500K|4000K|5000K
- 8.2W – 10.3W, Integral 120v 60 Hz constant current driver
- 90 CRI minimum as standard
- L70 @ 50,000 Hrs
- Dimmable to 5% with many 120V leading-edge and trailing-edge phase control dimmers
- Five-year limited warranty
- Installs in many 3-1/2" and 4" ceiling junction boxes as well as pancake boxes*
- Retrofits 4" recessed downlight housings
- cULus certified for Halo housings and many other housings**
- Damp Location Listed for walls
- Wet Location Listed for showers and outdoor protected ceilings
- AIR-TITE™ certified per ASTM-E283
- Plug-in LED connector for easy installation
 - Supply wire adapter connection, for junction box wiring
 - Screwbase adapter for recessed housing retrofit

Ordering Information

SAMPLE NUMBER: BLD406930WH

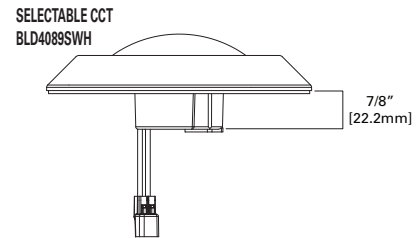
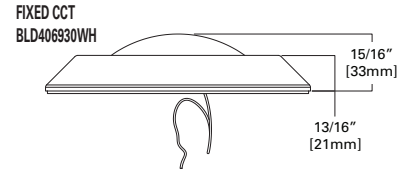
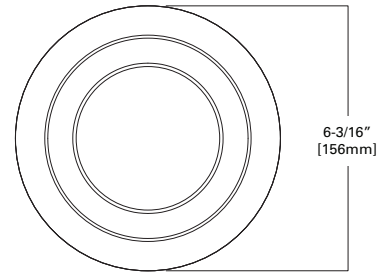
Models	Lumens	CRI / CCT	Finish	Voltage
BLD4 = 4" Backlit LED Downlight	06=600 lumen	930=90 CRI, 3000K	WH= matte white	Blank= 120V

SAMPLE NUMBER: BLD4089SWH

Models	Lumens	CRI / CCT	Finish	Voltage
BLD4 = 4" Backlit LED Downlight	08=800 lumen	9S=90 CRI, SeleCCTable 2700K, 3000K, 3500K, 4000K & 5000K	WH= matte white	Blank= 120V



* Selectable CCT configurations are not compatible with pancake junction boxes, please see installation instructions for further details.
 ** Please verify the selected housing meets minimum requirement for internal volume. Refer to specification sheet for further details.



3000K - dedicated	
Lumens	690
Wattage	8.2W
Input current	0.07
Efficacy	84.1 LPW
THD	15.1%
Frequency	60 Hz
T Ambient	-30 - +40°C
Voltage	120V
Sound Rating	Class A
Power Factor	0.99

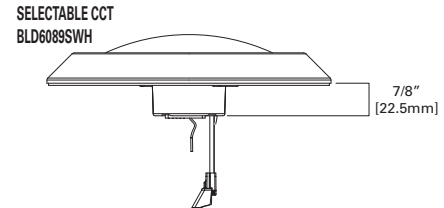
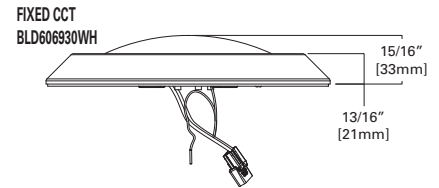
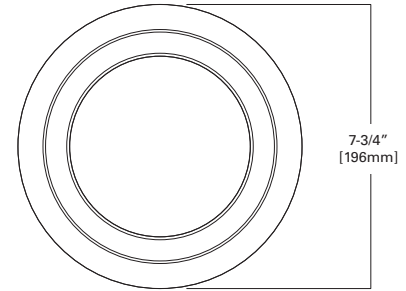
SeleCCTable 2700K – 5000K	
Lumens	802
Wattage	10.3W
Input current	0.087
Efficacy	77.9 LPW
THD	11.9%
Frequency	60 Hz
T Ambient	-30 - +40°C
Voltage	120V
Sound Rating	Class A
Power Factor	0.99



Refer to ENERGY STAR® Certified Products List. Can be used to comply with California Title 24 High Efficiency requirements. Certified to California Appliance Efficiency Database under JA8.



- 6" aperture low profile surface mounting options
- Two distinct lumen packages & CCT configurations available in both apertures
- 600 lumen package is available in 3000K
- 800 lumen package is available with field SeleCCTable CCT - 2700K|3000K|3500K|4000K|5000K
- 8.2W – 10.3W, Integral 120v 60 Hz constant current driver
- 90 CRI minimum as standard
- L70 @ 50,000 Hrs
- Dimmable to 5% with many 120V leading-edge and trailing-edge phase control dimmers
- Five-year limited warranty
- Installs in many 3-1/2" and 4" ceiling junction boxes as well as pancake boxes*
- Retrofits 6" recessed downlight housings
- cULus certified for Halo housings and many other housings**
- Damp Location Listed for walls
- Wet Location Listed for showers and outdoor protected ceilings
- AIR-TITE™ certified per ASTM-E283
- Plug-in LED connector for easy installation
 - Supply wire adapter connection, for junction box wiring
 - Screwbase adapter for recessed housing retrofit



Ordering Information

SAMPLE NUMBER: BLD606930WH

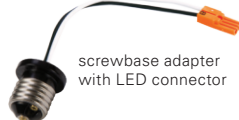
Models	Lumens	CRI / CCT	Finish	Voltage
BLD6 = 6" Backlit LED Downlight	06 =600 lumen	930 =90 CRI, 3000K	WH = matte white	Blank = 120V

SAMPLE NUMBER: BLD60895WH

Models	Lumens	CRI / CCT	Finish	Voltage
BLD6 = 6" Backlit LED Downlight	08 =800 lumen	9S =90 CRI, SeleCCTable 2700K, 3000K, 3500K, 4000K & 5000K	WH = matte white	Blank = 120V

3000K - dedicated	
Lumens	700
Wattage	8.2W
Input current	0.07
Efficacy	85.4 LPW
THD	14.3%
Frequency	60 Hz
T Ambient	-30 - +40°C
Voltage	120V
Sound Rating	Class A
Power Factor	0.99

SeleCCTable 2700K – 5000K	
Lumens	812
Wattage	10.3W
Input current	0.088
Efficacy	78.8 LPW
THD	11.8%
Frequency	60 Hz
T Ambient	-30 - +40°C
Voltage	120V
Sound Rating	Class A
Power Factor	0.99



* Selectable CCT configurations are not compatible with pancake junction boxes, please see installation instructions for further details.
 ** Please verify the selected housing meets minimum requirement for internal volume. Refer to specification sheet for further details.



BLD4 Housing Compatibility

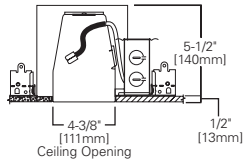
BLD4 LED is rated for installation in 4" HALO and other housings.

HALO LED¹	H995ICAT, H995RICAT, H245ICAT, H245RICAT
HALO	H99ICAT, H99RTAT, H99TAT, E4ICATSB, E4TATSB, E4RTATSB
Other Brands	The BLD4 is UL Certified for use with any 4" diameter recessed housing constructed of steel or aluminum with an internal volume that exceeds 62.3 in ³ in addition to those noted above.

¹ HALO LED housings are non-screw base, high-efficacy code compliant.

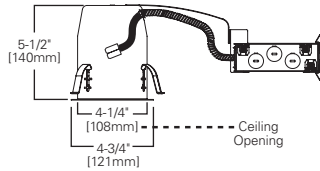
H995ICAT

4" LED, IC, AIR-TITE,
New Construction Housing



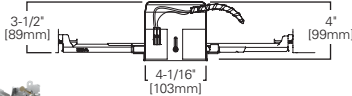
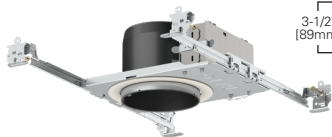
H995RICAT

4" LED, IC, AIR-TITE,
Remodel Housing



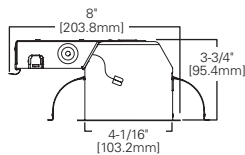
H245ICAT

4" LED, Ultra-shallow, IC, AIR-TITE, New Construction Housing



H245RICAT

4" LED, Ultra-shallow, IC, AIR-TITE, Remodel Housing



Friction clip install



BLD6 Housing Compatibility

BLD6 LED is rated for installation in 6" HALO and other housings.

HALO 6" LED¹	H750ICAT, H750RICAT, H750T, H750TCP, H2750ICAT, H2750RICAT, E750ICAT, E750RICAT
HALO 6"	H7ICAT, H7RICAT, H7ICT, H7RICT, H7ICATNB, H7ICTNB, H7T, H7RT, H7TNB, H7TCP, H7UICAT, H7UICATNB, H27ICAT, H27RICAT, H27T, H27RT, E7ICAT, E7RICAT, E27ICAT, E27RICAT, E7ICATNB, E7TAT, E7RTAT, E7TATNB, E27TAT, E27RTAT
HALO LED Retrofit	ML7BXRFBK, ML7E26RFBK

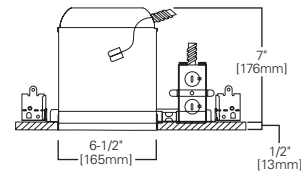
Other Brands* The BLD6 is UL Certified for use with any 6" diameter recessed housing constructed of steel or aluminum with an internal volume that exceeds 107.9 in³ in addition to those noted above.

*When using BLD6 torsion springs for retrofit some housings will not have torsion spring receiver brackets –use HALO ML7RAB retrofit adapter band (order separately)

¹ HALO LED housings are non-screw base, high-efficacy code compliant.

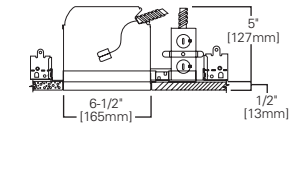
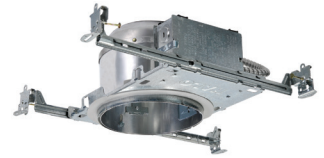
H750ICAT

6" LED, IC, AIR-TITE, Standard
New Construction Housing



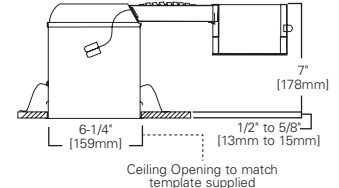
H2750ICAT

6" LED, IC, AIR-TITE, Shallow
New Construction Housing



H750RICAT

6" LED, IC, AIR-TITE, Standard Remodel Housing



Friction clip install



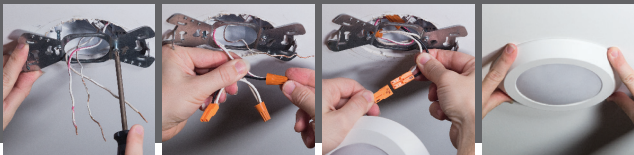
Torsion spring install



Compatible Junction Boxes*

		BLD4	BLD6
	Octagon - steel light fixture / fan box		
	4" x 4" x 2-1/8"	✓	✓
	4" x 4" x 1-1/2"		✓
	Square - steel deep box		
	4" x 4" x 2-1/8"		✓
	4" x 4" x 1-1/2"	✓	✓
	Round - new work fixture box (plastic)		
	4" diameter x 2-3/16"	✓	✓
	Round - new work ceiling box (plastic)		
	3-1/2" diameter x 2-3/4"	✓	✓
	Round - old work fixture box (plastic)		
	4" diameter x 2-3/16"	✓	✓
	Round - new work fixture box (plastic) with bar hanger		
	4" diameter x 2-3/16"	✓	✓
	Round surface mount		
	4" diameter x 1-1/2"	✓	✓
	Round ceiling pan**		
	4" diameter x 13/16"	✓	✓
	TP316 - Cooper Lighting Solutions' Crouse-Hinds junction box for non-metallic cable		
	4" x 2-1/8"	✓	✓
	TP317 - Cooper Lighting Solutions' Crouse-Hinds junction box for metal clad cable		
	4" x 2-1/8"	✓	✓

Junction box install



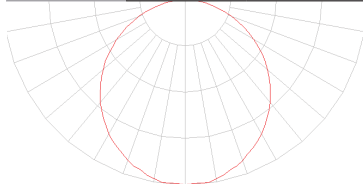
BLD406930WH

BLD4 3000K

BLD406930WH		
Luminaire lumens	690	
Input watts	8.2	
LER (LPW)	84.1	
Spacing Criteria	0-180	1.26
	90-270	1.26
	Diagonal	1.38
Beam angle (degrees)	114.4	
Field angle (degrees)	178.6	
Max. Candela	222	
Zonal lumen	Lumens	% Lumens
0-30	172	24.9%
0-40	282	40.8%
0-60	502	72.7%
0-90	690	100.00%

Color Metric Summary-3000K		
TM-30-15	Rf = 91	
	Rg = 101.1	
CRI/CIE	Ra = 93	
	R9 = 75	

CCT - Range of 2700K- 5000K



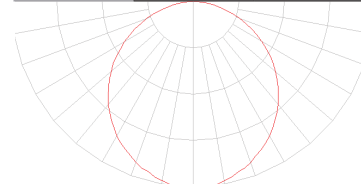
BLD606930WH

BLD6 3000K

BLD606930WH		
Luminaire lumens	700	
Input watts	8.2	
LER (LPW)	85.4	
Spacing Criteria	0-180	1.26
	90-270	1.26
	Diagonal	1.38
Beam angle (degrees)	112.3	
Field angle (degrees)	170.2	
Max. Candela	235.8	
Zonal lumen	Lumens	% Lumens
0-30	182	26.0%
0-40	298	42.5%
0-60	527	75.3%
0-90	700	100.00%

Color Metric Summary-3000K		
TM-30-15	Rf = 92.1	
	Rg = 102	
CRI/CIE	Ra = 93	
	R9 = 77	

CCT - Range of 2700K- 5000K



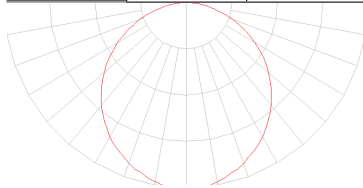
BLD4089SWH

BLD4 SeleCCTable

BLD4089SWH		
Luminaire lumens	802	
Input watts	10.3	
LER (LPW)	77.9	
Spacing Criteria	0-180	1.28
	90-270	1.28
	Diagonal	1.4
Beam angle (degrees)	116.8	
Field angle (degrees)	180	
Max. Candela	250	
Zonal lumen	Lumens	% Lumens
0-30	195	24.3%
0-40	321	40.0%
0-60	576	71.8%
0-90	802	100.00%

Color Metric Summary-3000K		
TM-30-15	Rf = 91.8	
	Rg = 101.3	
CRI/CIE	Ra = 93	
	R9 = 70	

CCT - Range of 2700K- 5000K



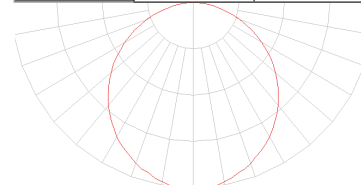
BLD6089SWH

BLD6 SeleCCTable

BLD6089SWH		
Luminaire lumens	812	
Input watts	10.3	
LER (LPW)	78.8	
Spacing Criteria	0-180	1.24
	90-270	1.24
	Diagonal	1.36
Beam angle (degrees)	108.5	
Field angle (degrees)	170.3	
Max. Candela	283.5	
Zonal lumen	Lumens	% Lumens
0-30	217	26.7%
0-40	352	43.4%
0-60	615	75.7%
0-90	812	100.00%

Color Metric Summary-3000K		
TM-30-15	Rf = 92.5	
	Rg = 102	
CRI/CIE	Ra = 93	
	R9 = 76	

CCT - Range of 2700K- 5000K



*Additional photometric ies files available online.

*Additional photometric ies files available online.

Cooper Lighting Solutions

1121 Highway 74 South
Peachtree City, GA 30269
P: 770-486-4800
www.cooperlighting.com

Canada Sales
5925 McLaughlin Road
Mississauga, Ontario L5R 1B8
P: 905-501-3000
F: 905-501-3172

Lighting Brands

Ametrix
AtLite
Corelite
Ephesus
Fail-Safe
HALO
HALO Commercial
Invue
iO
Iris
Lumark
Lumière
McGraw-Edison
Metalux
MWS
Neo-Ray
Portfolio
PrentaLux - 3D Printed
Lighting
RSA
Shaper
Streetworks
Sure-Lites
Telensa

Controls Brands

Greengate
Fifth Light
Intelligent Lighting Controls

Connected Lighting Systems and Smart Spaces Platform

WaveLinx



© 2023 Cooper Lighting Solutions
All Rights Reserved
Printed in USA
Publication No. BR518055EN
April 2023

Products, specifications and
compliances are subject to
change without notice.

Cooper Lighting Solutions is a
registered trademark.
All other trademarks are property
of their respective owners.