

DESCRIPTION

The H272ICAT is designed for insulated ceilings and can be in direct contact with ceiling insulation. This AIR-TITE™ housing design prevents airflow between attic and living areas and saves on both heating and air conditioning costs. The 26W electronic compact fluorescent ballast meets FCC Title 47 CFR part 18 for Consumer equipment. The H272ICAT offers a wide choice of trim types including reflector, lensed and wall wash trims.

Catalog #	Type
Project	
Comments	
Prepared by	

DESIGN FEATURES

Housing

Single wall aluminum housing. Openings are gasketed for AIR-TITE installation. 7-3/8" height allows use in 2"x 8" joist construction. Housing adjusts for ceilings up to 1-1/8" thick. AIR-TITE ceiling-to-housing installation gasket included.

Plaster Frame

Includes regressed locking screw for hanger bars and cutouts for crimping hanger bars in position.

Junction Box

- Listed for through branch circuit wiring
- Positioned to accommodate straight conduit runs
- Seven 1/2" trade size conduit knockouts with true pry-out slots
- Slide-N-Side™ connectors allow non-metallic sheathed cable to be installed without tools and without removing knockouts. Accepts a wider range of non-metallic sheathed cable – the standard cable types used in lighting for both U.S. and Canada.
- Allows wiring connections to be made outside the junction box
- Simply insert the cable directly into the trap after connections are made
- accommodates the following standard non-metallic sheathed cable types: (US) #14/2, #14/3, #12/2, #12/3 (Canada) #14/2, #14/3, #12/2

Bar Hangers

Bar Hanger Features include:

- Pre-installed nail easily installs in regular lumber, engineered lumber and laminated beams
- Safety and guidance system prevents snagging, ensures smooth straight nail penetration and allows bar hangers to be easily removed if necessary.
- Automatic levelling flange aligns the housing and lets you hold the housing in place with one hand while driving nails
- Housing can be positioned at any point within 24" joist span
- Score lines allow "tool-less" shortening for 12" joists
- Bar hangers may be repositioned 90°
- Bar hangers do not need to be removed from frame for shortening
- Integral T-bar clips snaps onto T-bars - no additional clips required

Socket

G24q-3/GX24-3 socket for one 26W DTT* - Double Twin Tube (Quad) or 26W TTT - Triple Twin Tube 4 pin lamp.

* 26W DDT lamp not listed for use with all trims. See trim listing on page 2

Lamp

Compact Fluorescent lamp (by others).
Generic 26 Watt Lamp Designations
*DTT-Double Twin Tube (Quad) (CFQ)
• CFQ26W/G24q 2700K
• CFQ26W/G24q 3000K
TTT-Triple Twin Tube (CFTR)

- CFTR26W/GX24q 2700K
- CFTR26W/GX24q 3000K
- 12,000 hour rated average life
- 82 CRI rated lamps provide excellent color and high visual comfort.
- Color temperature (warm to cool) options offer 2700K warm or 3000K medium-warm incandescent-like light.

* 26W DDT lamp not listed for use with all trims. See trim listing on page 2

Electronic Ballast

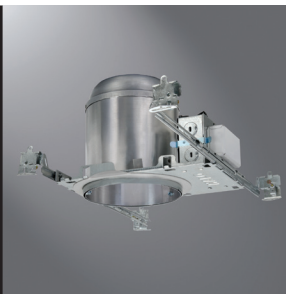
Thermally protected, fused, 120 volt electronic ballast provides full light output and rated lamp life. Provides flicker free and noise free operation and starting. End of lamp life protection is standard. Meets FCC EMI/RFI Consumer Level limits.

Labels

- UL/cUL Listed for Damp Location
- UL/cUL Listed wet location with select trims
- UL/cUL Listed for Direct Contact with Insulation and combustible material
- UL/cUL listed for Feed Through

Compliance

- State of California Title 24
- Washington State Energy Code
- New York State Energy Conservation Construction Code
- International Energy Conservation Code
- Certified AIR-TITE under ASTM-E283



H272ICAT

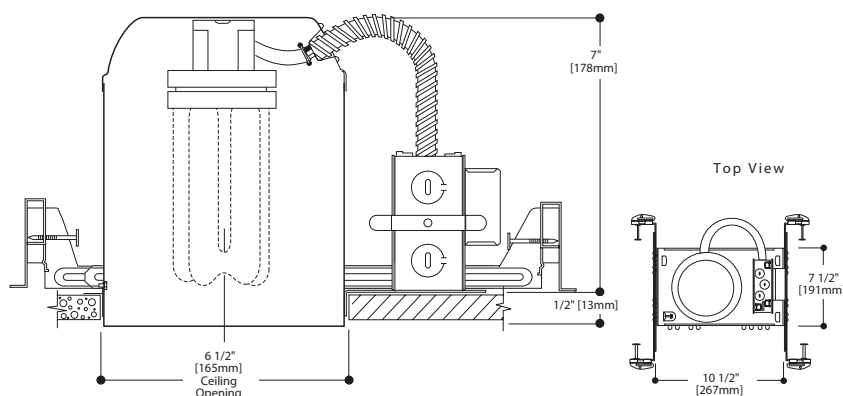
**6" Insulated Ceiling
Compact Fluorescent
AIR-TITE™ Recessed
Housing
26 Watt Compact
Fluorescent**

6" TRIMS

**FOR USE IN
INSULATED CEILINGS**

**FOR DIRECT CONTACT
WITH INSULATION**

DIMENSIONS



Lamp/Ballast Energy Data

Rated Lamp Watts: 26W
Voltage: 120V
Input Current: 0.23A
Input Power (ANSI Watts): 28W

air-tite

Can be used for
IECC
International Energy
Conservation Code
High Efficacy
Compliance

Can be used for
T24
California Title 24
High Efficacy
Compliance

TRIMS

ORDERING INFORMATION

SAMPLE NUMBER: H272ICAT - 470SC

Order housing, trim and accessories separately.

Housing

Trims

Trims

H272ICAT =Insulated Ceiling
26W Compact Fluorescent
AIR-TITE Housing



470

Reflector, White Self Flange Trim Ring
26W DTT, 26W TTT compact fluorescent
470SC =Specular Clear
470H =Haze
470CG =Champagne Gold
470RG =Residential Gold
OD: 7 1/4" (184mm)



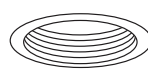
ERT770

Reflector, Gloss White Trim Ring,
Torsion Springs
26W DTT, 26W TTT compact fluorescent
ERT770TS =Clear Specular Reflector
ERT770MTS =Matte Reflector
OD: 7 1/4" (184mm)



ERT771

Gloss White Reflector with Torsion
Springs
26W DTT, 26W TTT compact fluorescent
ERT771TS =Gloss White Reflector
OD: 7 1/4" (184mm)



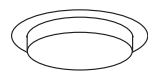
406

Coilex Baffle with Torsion Springs
26W DTT, 26W TTT compact fluorescent
406BA =Black Baffle, White Trim Ring
406WB =White Baffle, Clear Reflector,
White Trim Ring
406WWB =White Baffle, White
Reflector, White Trim Ring
OD: 7 1/4" (184mm)



ERT772

Metal Baffle with Torsion Springs
26W DTT, 26W TTT compact fluorescent
ERT772TS =Black Baffle, Gloss White
Upper Reflector, Gloss White Trim
Ring
ERT772WHTTS =Gloss White Baffle,
Gloss White Upper Reflector, Gloss
White Trim Ring
OD: 7 1/4" (184mm)



271

Drop Opal Lens
26W DTT, 26W TTT compact fluorescent
271PS =Wet Location Listed Shower
Light with Drop Opal Lens and
White Trim Ring
OD: 8" (203mm)



270

Albalite Lens with Reflector
26W TTT compact fluorescent only
270PS =Albalite Lens Wet Location
Listed Shower Light with Full
Reflector and White Trim Ring
OD: 8" (203mm)



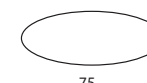
370

Regressed Albalite Lens
with Reflector
26W TTT compact
fluorescent lamp only
370W =Albalite Lens Wet
Location Listed Shower
Light with Full Reflector
and White Trim Ring
OD: 8" (203mm)



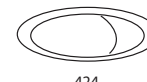
272

Dome Shower Light
26W DTT, 26W TTT
compact fluorescent
272PS = Dome Shower
Light with Full Reflector,
White Trim Ring and
Frosted Glass
Dome
OD: 8" (203mm)



75

Frosted Glass Diffuser
(TTT Lamp Only in 26W)
75=Glass Diffuser
OD: 7 3/4" (197mm)



424

Wall Wash
424P =Wall Wash
OD: 7 1/4" (184mm)

Accessories

Accessories

Gasket Kit
GA-ATH7-6PK =Spare AIR-TITE Ceiling
Gasket Kit, 6 pieces

Oversize Trim Rings
for use when ceiling opening is cut too
large.
OT400P =9 1/4" White Metal
OT403P = 8" White Plastic

DESCRIPTION

The H272ICAT is designed for insulated ceilings and can be in direct contact with ceiling insulation. This AIR-TITE™ housing design prevents airflow between attic and living areas and saves on both heating and air conditioning costs. The 26W electronic compact fluorescent ballast meets FCC Title 47 CFR part 18 for Consumer equipment. The H272ICAT offers a wide choice of trim types including reflector, lensed and wall wash trims.

Catalog #	Type
Project	
Comments	
Prepared by	

DESIGN FEATURES

Housing

Single wall aluminum housing. Openings are gasketed for AIR-TITE installation. 7-3/8" height allows use in 2"x 8" joist construction. Housing adjusts for ceilings up to 1-1/8" thick. AIR-TITE ceiling-to-housing installation gasket included.

Plaster Frame

Includes regressed locking screw for hanger bars and cutouts for crimping hanger bars in position.

Junction Box

- Listed for through branch circuit wiring
- Positioned to accommodate straight conduit runs
- Seven 1/2" trade size conduit knockouts with true pry-out slots
- Slide-N-Side™ connectors allow non-metallic sheathed cable to be installed without tools and without removing knockouts. Accepts a wider range of non-metallic sheathed cable – the standard cable types used in lighting for both U.S. and Canada.
- Allows wiring connections to be made outside the junction box
- Simply insert the cable directly into the trap after connections are made
- accommodates the following standard non-metallic sheathed cable types: (US) #14/2, #14/3, #12/2, #12/3 (Canada) #14/2, #14/3, #12/2

Bar Hangers

Bar Hanger Features include:

- Pre-installed nail easily installs in regular lumber, engineered lumber and laminated beams
- Safety and guidance system prevents snagging, ensures smooth straight nail penetration and allows bar hangers to be easily removed if necessary.
- Automatic levelling flange aligns the housing and lets you hold the housing in place with one hand while driving nails
- Housing can be positioned at any point within 24" joist span
- Score lines allow "tool-less" shortening for 12" joists
- Bar hangers may be repositioned 90°
- Bar hangers do not need to be removed from frame for shortening
- Integral T-bar clips snaps onto T-bars - no additional clips required

Socket

G24q-3/GX24-3 socket for one 26W DTT* - Double Twin Tube (Quad) or 26W TTT - Triple Twin Tube 4 pin lamp.

* 26W DDT lamp not listed for use with all trims. See trim listing on page 2

Lamp

Compact Fluorescent lamp (by others).
Generic 26 Watt Lamp Designations
*DTT-Double Twin Tube (Quad) (CFQ)
• CFQ26W/G24q 2700K
• CFQ26W/G24q 3000K
TTT-Triple Twin Tube (CFTR)

- CFTR26W/GX24q 2700K
- CFTR26W/GX24q 3000K
- 12,000 hour rated average life
- 82 CRI rated lamps provide excellent color and high visual comfort.
- Color temperature (warm to cool) options offer 2700K warm or 3000K medium-warm incandescent-like light.

* 26W DDT lamp not listed for use with all trims. See trim listing on page 2

Electronic Ballast

Thermally protected, fused, 120 volt electronic ballast provides full light output and rated lamp life. Provides flicker free and noise free operation and starting. End of lamp life protection is standard. Meets FCC EMI/RFI Consumer Level limits.

Labels

- UL/cUL Listed for Damp Location
- UL/cUL Listed wet location with select trims
- UL/cUL Listed for Direct Contact with Insulation and combustible material
- UL/cUL listed for Feed Through

Compliance

- State of California Title 24
- Washington State Energy Code
- New York State Energy Conservation Construction Code
- International Energy Conservation Code
- Certified AIR-TITE under ASTM-E283



H272ICAT

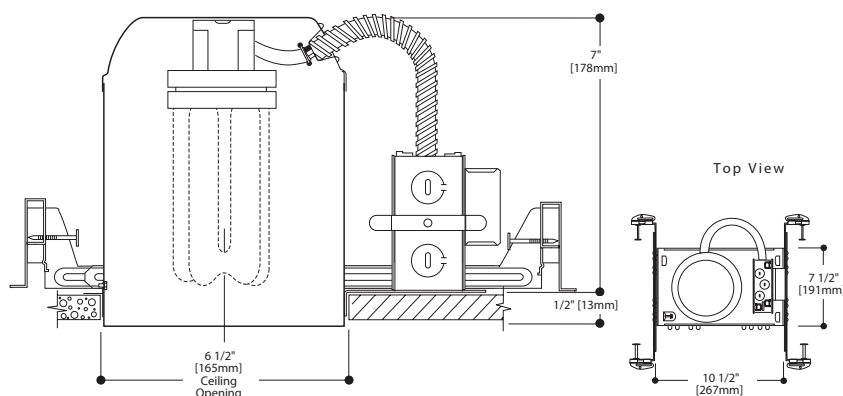
**6" Insulated Ceiling
Compact Fluorescent
AIR-TITE™ Recessed
Housing
26 Watt Compact
Fluorescent**

6" TRIMS

**FOR USE IN
INSULATED CEILINGS**

**FOR DIRECT CONTACT
WITH INSULATION**

DIMENSIONS



Lamp/Ballast Energy Data

Rated Lamp Watts: 26W
Voltage: 120V
Input Current: 0.23A
Input Power (ANSI Watts): 28W

air-tite

Can be used for
IECC
International Energy
Conservation Code
High Efficacy
Compliance

Can be used for
T24
California Title 24
High Efficacy
Compliance

TRIMS

ORDERING INFORMATION

SAMPLE NUMBER: H272ICAT - 470SC

Order housing, trim and accessories separately.

Housing

Trims

Trims

H272ICAT =Insulated Ceiling
26W Compact Fluorescent
AIR-TITE Housing



470

Reflector, White Self Flange Trim Ring
26W DTT, 26W TTT compact fluorescent
470SC =Specular Clear
470H =Haze
470CG =Champagne Gold
470RG =Residential Gold
OD: 7 1/4" (184mm)



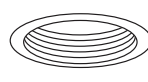
ERT770

Reflector, Gloss White Trim Ring,
Torsion Springs
26W DTT, 26W TTT compact fluorescent
ERT770TS =Clear Specular Reflector
ERT770MTS =Matte Reflector
OD: 7 1/4" (184mm)



ERT771

Gloss White Reflector with Torsion
Springs
26W DTT, 26W TTT compact fluorescent
ERT771TS =Gloss White Reflector
OD: 7 1/4" (184mm)



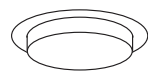
406

Coilex Baffle with Torsion Springs
26W DTT, 26W TTT compact fluorescent
406BA =Black Baffle, White Trim Ring
406WB =White Baffle, Clear Reflector,
White Trim Ring
406WWB =White Baffle, White
Reflector, White Trim Ring
OD: 7 1/4" (184mm)



ERT772

Metal Baffle with Torsion Springs
26W DTT, 26W TTT compact fluorescent
ERT772TS =Black Baffle, Gloss White
Upper Reflector, Gloss White Trim
Ring
ERT772WHTTS =Gloss White Baffle,
Gloss White Upper Reflector, Gloss
White Trim Ring
OD: 7 1/4" (184mm)



271

Drop Opal Lens
26W DTT, 26W TTT compact fluorescent
271PS =Wet Location Listed Shower
Light with Drop Opal Lens and
White Trim Ring
OD: 8" (203mm)



270

Albalite Lens with Reflector
26W TTT compact fluorescent only
270PS =Albalite Lens Wet Location
Listed Shower Light with Full
Reflector and White Trim Ring
OD: 8" (203mm)



370

Regressed Albalite Lens
with Reflector
26W TTT compact
fluorescent lamp only
370W =Albalite Lens Wet
Location Listed Shower
Light with Full Reflector
and White Trim Ring
OD: 8" (203mm)



272

Dome Shower Light
26W DTT, 26W TTT
compact fluorescent
272PS = Dome Shower
Light with Full Reflector,
White Trim Ring and
Frosted Glass
Dome
OD: 8" (203mm)



75

Frosted Glass Diffuser
(TTT Lamp Only in 26W)
75 =Glass Diffuser
OD: 7 3/4" (197mm)



424

Wall Wash
424P =Wall Wash
OD: 7 1/4" (184mm)

Accessories

Accessories

Gasket Kit
GA-ATH7-6PK =Spare AIR-TITE Ceiling
Gasket Kit, 6 pieces

Oversize Trim Rings
for use when ceiling opening is cut too
large.
OT400P =9 1/4" White Metal
OT403P = 8" White Plastic