

HALO LED ICAT REMODEL HOUSING

The H750RICAT is a dedicated LED Remodel housing to be used with designated Halo LED modules. The H750RICAT is designed for remodel applications in insulated ceilings and can be in direct contact with ceiling insulation*. This AIR-TITE™ housing design prevents airflow between conditioned and unconditioned spaces and saves on both heating and air conditioning costs. The LED connector system provides High Efficacy code compliance when used with designated HALO LED modules and trims.

Catalog #		Type
Project		
Comments		Date
Prepared by		

DESIGN FEATURES

Housing

Single wall aluminum housing. Openings are gasketed for AIR-TITE™ installation.

Slide-N-Side™ Junction Box

- Seven 1/2" trade size conduit knockouts with true pry-out slots.
- Slide-N-Side™ wire traps allow non-metallic sheathed cable to be installed without tools and without removing knockouts.
- Accepts a wider range of non-metallic sheathed cable - the standard cable types used in lighting for both US and Canada.
 - Allows wiring connections to be made outside the box.
 - Simply insert the cable directly into the trap after connections are made.
 - Accommodates the following standard non-metallic sheathed cable types. (US) #14/2, #14/3, #12/2, #12/3 (Canada) #14/2, #14/3, #12/2

Remodel Springs

Four remodel clips secure housing and accommodate 1/2" and 5/8" ceiling material.

LED Module Connection

Halo LED modules simply install with a plug-in 120V-277V rated line voltage wiring connector (UL and CSA Listed Luminaire Disconnect). This non-screw-base connection preserves the high efficacy rating and prevents use of low efficacy incandescent sources.

Caution

Connection is rated for 120V and 277V input. Installer must verify LED module voltage is compatible with the applicable voltage input. If uncertain, consult a qualified electrician.

Compliance

- cULus Listed 1598 Luminaire.
- cULus Listed Damp Location.
- cULus Listed for Wet Location, covered ceiling, with select trims.
- cULus Listed for Feed Through.
- cULus Listed for direct contact with insulation and combustible material*.
- CE Marking - "Conformité Européenne" conformity with the council of European Communities Directives, meeting internationally recognized compliance with used with ML56 Series LED modules.

- Air-Tite code compliant. Certified under ASTM E283; not exceeding 2.0 cfm (0.944 L/s) air leakage rate tested at a 1.57 psf (75 Pa) pressure differential (with ceiling gasket GA-ATH7-6PK or caulk)
- Rated for 20W maximum
- Use with ENERGY STAR® certified Halo LED modules and trims.
- Can be used for State of California Title 24 high efficacy compliance with Title 20 Certified Halo LED.
- Can be used for International Energy Conservation Code (IECC) high efficacy compliance with designated LED modules and trims.
- Refer to LED module specification sheets online for additional compliance information.
- RoHS Compliant.
- Options to meet Trade Agreements Act requirements

*Not to be used in direct contact with spray foam insulation (Consult NEMA LSD57-2013).



H750RICAT

6" Remodel IC AIR-TITE™ Housing For Halo LED Modules and Trims

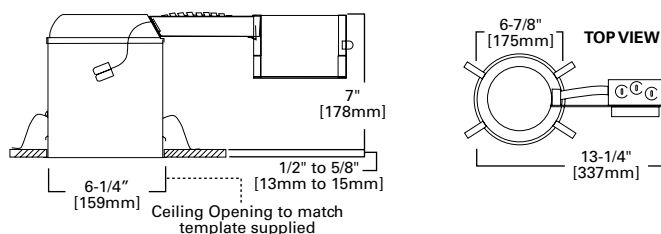
- ML56 Series
- RL56 Series
- RA56 Series
- LT56 Series
- LA56 Series
- RSQ6 Series
- SLD6 Series
- SMD6 Series

High Efficacy LED Housing

FOR USE IN INSULATED CEILINGS

FOR DIRECT CONTACT WITH INSULATION*

TO BE INSTALLED FROM BELOW THE CEILING



ORDERING INFORMATION - H750RICAT

SAMPLE NUMBER: H750RICAT - RL560WH6927
Order housing, light module, trim and separately.

Domestic Preferences ⁽¹⁾	Housing
[Blank] = Standard TAA = Trade Agreements Act	H750RICAT= 6" Aperture, Remodel, IC AIR-TITE™, High Efficacy LED Housing

Notes: (1) Only product configurations with this designated prefix are built to be compliant with the Trade Agreements Act of 1979 (TAA). Please refer to [DOMESTIC PREFERENCES](#) website for more information. Components shipped separately may be separately analyzed under domestic preference requirements. Accessories sold separately will be separately analyzed under domestic preference requirements. Consult factory for further information.

*Outdoor rated lamp only (purchase separately)



Cooper Lighting Solutions
1121 Highway 74 South
Peachtree City, GA 30269
P: 770-486-4800
www.cooperlighting.com

Specifications and dimensions subject to change without notice.

Refer to ENERGY STAR® certified Products List and CEC (T20) Database for listings.