

## J-Pro™ Cable Support System

### Let Panduit Support Your Cables

The J-Pro™ Cable Support System is designed to provide a competitive alternative to metal J hooks for routing cables throughout the physical infrastructure. This system provides complete bend radius control and includes many easy to use mounting options to provide the lowest installed cost. The selection of multiple sizes, colors, and pre-riveted J hook assemblies meet the requirements of a wide variety of applications and are suitable for use in air handling spaces.

**Available in four sizes and select colors.**



### KEY FEATURES AND BENEFITS

<b>Multiple size J hooks:</b>	Available in 3/4", 1 5/16", 2", and 4" bundle capacities to meet requirements of a variety of applications throughout the physical infrastructure
<b>Complete horizontal and vertical 1" bend radius control:</b>	Helps prevent degradation of cable performance Prevents pinch points that could cause damage to cable
<b>UL 2043 and CAN/ULC S102.2 listed:</b>	Suitable for use in air handling spaces Listed within UL file number E136577 Listed within ULC file number R21673
<b>Color options:</b>	Provide means to segregate and identify cable bundles for specific applications, such as data, voice, security, fire alarm, or other applications that require a designated pathway
<b>Pre-riveted assemblies:</b>	Allow for attachment to ceilings, beams, threaded rods, drop wires, and underfloor supports to meet requirements of a variety of applications
<b>Cable tie channel:</b>	Allows user to install 3/4" Tak-Ty® Cable Tie and provides a method to retain and manage cable bundles
<b>Non-metallic J hook:</b>	Prevents cables from coming in contact with metal

# J-Pro™ Cable Support System



JP2W-L20



JP2WP2B-L20



JP2CMB-L20



JP2DW-L20

## ORDERING INFORMATION

### WALL MOUNT



Part Number	Part Description	Max. Bundle Capacity		Max. Cable Capacity*			Material**	Std. Pkg. Qty.
		In.	mm	Category 6A-SD/6A (0.30")	Category 6 (0.24")	Category 5e (0.23")		
JP75W-L20	J Hook for wall mount applications. One 1/4" (M6) mounting hole for user supplied fastener. Not for use with powder actuated fasteners.	0.75	19.0	5	8	10	Nylon 6.6	50
JP131W-L20		1.31	33.3	15	25	29		
JP2W-L20		2.00	50.8	30	46	55		
JP4W-X20		4.00	101.6	115	180	200		



JP2W-L20



JP2WP2B-L20

### WALL MOUNT WITH BRACKET

JP75WP2B-L20	J Hook for powder actuated installation on walls. One 5/32" (M4) mounting hole and one 1/4" (M6) mounting hole for user supplied fasteners.	0.75	19.0	5	8	10	Nylon 6.6 J Hook with metal attachments	50
JP131WP2B-L20		1.31	33.3	15	25	29		
JP2WP2B-L20		2.00	50.8	30	46	55		
JP4WP2B-X20		4.00	101.6	115	180	200		

### CEILING MOUNT

JP75CMB-L20	J Hook with ceiling mount bracket that has one 3/16" (M5), 1/4" (M6), and 3/8" (M10) mounting hole.	0.75	19.0	5	8	10	Nylon 6.6 J Hook with metal attachments	50
JP131CMB-L20		1.31	33.3	15	25	29		
JP2CMB-L20		2.00	50.8	30	46	55		
JP4CMB-X20		4.00	101.6	115	180	200		10



JP2CMB-L20

### DROP WIRE AND THREADED ROD CLIP

JP75DW-L20	J Hook with clip for use with #12 wire and threaded rod up to 3/8" (9.5mm) in diameter.	0.75	19.0	5	8	10	Nylon 6.6 J Hook with metal attachments	50
JP131DW-L20		1.31	33.3	15	25	29		
JP2DW-L20		2.00	50.8	30	46	55		
JP4DW-X20		4.00	101.6	115	180	200		10



JP2DW-L20

\*The above cable diameters represent the nominal Panduit cable diameter per performance level.

For specific cable fill information based on specific part numbers, please contact customer service.

\*\*Suitable for use in air handling spaces in accordance with Sec. 300.22(C) and (D) of the National Electrical Code when mounted as single units or in pairs. JP4 family of parts suitable for use in single unit configurations only.

Listed in accordance with CAN/ULC S102.2 when mounted as single units or in pairs. Minimum spacing of 4' (1220mm) required between mount points. (Flame Spread Rating = 0, Smoke Developed Classification = 20)

For more information visit:  
[www.panduit.com](http://www.panduit.com)

# J-Pro™ Cable Support System



**JP2HBC25RB-L20**



**JP2WP2B-L20**

## HAMMER-ON BEAM CLAMPS

Part Number	Part Description	Max. Bundle Capacity		Max. Cable Capacity*			Material**	Std. Pkg. Qty.
		In.	mm	Category 6A-SD/6A (0.30")	Category 6 (0.24")	Category 5e (0.23")		
<b>JP75HBC25RB-L20</b>	J hook with hammer-on beam clamp for use with flanges 1/8" – 1/4" (3.2mm – 6.4mm) thick. Rotates 360 degrees.	0.75	19.0	5	8	10	Nylon 6.6 J hook with metal attachments	50
<b>JP131HBC25RBL20</b>		1.31	33.3	15	25	29		
<b>JP2HBC25RB-L20</b>		2.00	50.8	30	46	55		
<b>JP4HBC25RB-X20</b>		4.00	101.6	115	180	200		
<b>JP75HBC50RB-L20</b>	J hook with hammer-on beam clamp for use with flanges 5/16" – 1/2" (7.9mm – 12.7mm) thick. Rotates 360 degrees.	0.75	19.0	5	8	10		
<b>JP131HBC50RBL20</b>		1.31	33.3	15	25	29		
<b>JP2HBC50RB-L20</b>		2.00	50.8	30	46	55		
<b>JP4HBC50RB-X20</b>		4.00	101.6	115	180	200		
<b>JP75HBC75RB-L20</b>	J hook with hammer-on beam clamp for use with flanges 9/16" – 3/4" (14.3mm – 19.1mm) thick. Rotates 360 degrees.	0.75	19.0	5	8	10		
<b>JP131HBC75RBL20</b>		1.31	33.3	15	25	29		
<b>JP2HBC75RB-L20</b>		2.00	50.8	30	46	55		



**JP2HBC25RB-L20  
JP2HBC50RB-L20  
JP2HBC75RB-L20**

## UNDERFLOOR PEDESTAL CLAMP

<b>JP75UF100-L20</b>	J hook with clip for use with #12 wire and threaded rod up to 3/8" (9.5mm) in diameter.	0.75	19.0	5	8	10	Nylon 6.6 J hook with metal attachments	50
<b>JP131UF100-L20</b>		1.31	33.3	15	25	29		
<b>JP2UF100-L20</b>		2.00	50.8	30	46	55		
<b>JP4UF100-X20</b>		4.00	101.6	115	180	200		10



**JP2UF100-L20**

\*The above cable diameters represent the nominal Panduit cable diameter per performance level.

For specific cable fill information based on specific part numbers, please contact customer service.

\*\*Suitable for use in air handling spaces in accordance with Sec. 300.22(C) and (D) of the National Electrical Code when mounted as single units or in pairs. JP4 family of parts suitable for use in single unit configurations only.

Listed in accordance with CAN/ULC S102.2 when mounted as single units or in pairs. Minimum spacing of 4' (1220mm) required between mount points. (Flame Spread Rating = 0, Smoke Developed Classification = 20)

# J-Pro™ Cable Support System

## COLOR SELECTION GUIDE

Base Part Number	Black	Red	Blue	White	Orange
JP75W	-L20	-L2			
JP75WP2B					
JP75CMB					
JP75DW		-L2			
JP75ZP					
JP75CP					
JP75SBC50					
JP75SBC87					
JP75SBC50RB					
JP75SBC87RB					
JP75HBC25RB					
JP75HBC50RB		-L2			
JP75HBC75RB					
JP75UF100					
JP131W		-L2			
JP131WP2B					
JP131CMB					
JP131DW					
JP131ZP					
JP131CP					
JP131SBC50					
JP131SBC87					
JP131SBC50RB				-L	
JP131SBC87RB					
JP131HBC25RB					
JP131HBC50RB					
JP131HBC75RB					
JP131UF100					
JP2W		-L2	-L6	-L	-L3
JP2WP2B					
JP2CMB				-L	
JP2DW		-L2		-L	
JP2ZP					
JP2CP					
JP2SBC50					
JP2SBC87					
JP2SBC50RB				-L	
JP2SBC87RB					
JP2HBC25RB				-L	
JP2HBC50RB					
JP2HBC75RB					
JP2UF100					
JP4DW	-X20				
JP4W				-X	
JP4WP2B					
JP4CMB					
JP4SBC50					
JP4SBC87				-X	
JP4SBC50RB				-X	
JP4SBC87RB					
JP4HBC25RB				-X	
JP4HBC50RB					
JP4UF100					

Consult factory for additional colors available.

For more information visit:  
[www.panduit.com](http://www.panduit.com)

# J-Pro™ Cable Support System



JP2SBC50RB-L20



JP2SBC87RB-L20



JP2ZP-L20



JP2CP-L20



JP2SBC50-L20

## SCREW-ON BEAM CLAMPS

Part Number	Part Description	Max. Bundle Capacity		Max. Cable Capacity*			Material**	Std. Pkg. Qty.
		In.	mm	Category 6A-SD/6A (0.30")	Category 6 (0.24")	Category 5e (0.23")		
JP75SBC50-L20	J hook with screw-on beam clamp for use with flanges up to 1/2" (12.7mm) thick. Non-rotating mount.	0.75	19.0	5	8	10	Nylon 6.6 J hook with metal attachments	50
JP131SBC50-L20		1.31	33.3	15	25	29		
JP2SBC50-L20		2.00	50.8	30	46	55		10
JP4SBC50-X20		4.00	101.6	115	180	200		
JP75SBC50RB-L20	J hook with screw-on beam clamp for use with flanges up to 1/2" (12.7mm) thick. Rotates 360 degrees.	0.75	19.0	5	8	10		50
JP131SBC50RBL20		1.31	33.3	15	25	29		
JP2SBC50RB-L20		2.00	50.8	30	46	55		10
JP4SBC50RB-X20		4.00	101.6	115	180	200		
JP75SBC87-L20	J hook with screw-on beam clamp for use with flanges up to 3/4" (19.1mm) thick. Non-rotating mount.	0.75	19.0	5	8	10		50
JP131SBC87-L20		1.31	33.3	15	25	29		
JP2SBC87-L20		2.00	50.8	30	46	55		10
JP4SBC87-X20		4.00	101.6	115	180	200		
JP75SBC87RB-L20	J hook with screw-on beam clamp for use with flanges up to 3/4" (19.1mm) thick. Rotates 360 degrees.	0.75	19.0	5	8	10		50
JP131SBC87RBL20		1.31	33.3	15	25	29		
JP2SBC87RB-L20		2.00	50.8	30	46	55		10
JP4SBC87RB-X20		4.00	101.6	115	180	200		

JP2SBC50RB-L20



JP2SBC87-L20



JP2SBC87RB-L20



JP2ZP-L20



JP2CP-L20

## PURLIN CLIPS

JP75ZP-L20	J hook with z-purlin clip for use with angled flanges up to 1/4" (6.4mm) thick.	0.75	19.0	5	8	10	Nylon 6.6 J hook with metal attachments	50
JP131ZP-L20		1.31	33.3	15	25	29		
JP2ZP-L20		2.00	50.8	30	46	55		
JP75CP-L20	J hook with c-purlin clip for use with vertical flanges up to 1/4" (6.4mm) thick.	0.75	19.0	5	8	10		50
JP131CP-L20		1.31	33.3	15	25	29		
JP2CP-L20		2.00	50.8	30	46	55		

\*The above cable diameters represent the nominal Panduit cable diameter per performance level.

For specific cable fill information based on specific part numbers, please contact customer service.

\*\*Suitable for use in air handling spaces in accordance with Sec. 300.22(C) and (D) of the National Electrical Code when mounted as single units or in pairs. JP4 family of parts suitable for use in single unit configurations only.

Listed in accordance with CAN/ULC S102.2 when mounted as single units or in pairs. Minimum spacing of 4' (1220mm) required between mount points. (Flame Spread Rating = 0, Smoke Developed Classification = 20)

For more information visit:  
**www.panduit.com**



# J-Pro™ Cable Support System – Related Products

## Tak-Ty® Hook & Loop Cable Tie for use with the J-Pro™ Cable Support System



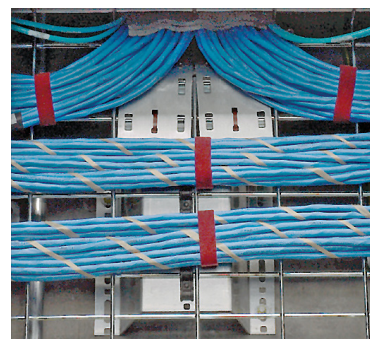
Part Number	Length		Width		Max. Bundle Diameter		Min. Loop Tensile Strength		Std. Pkg. Qty.	Std. Ctn. Qty.
	In.	mm	In.	mm	In.	mm	Lbs.	N		

### UL LISTED STRIP TIES (MAROON) FOR PLENUM APPLICATIONS

HLSP3S-X12	12.00	305.0	0.75	19.1	3.20	81.0	50	222	10	100
HLSP5S-X12	18.00	457.0			5.00	127.0				

### UL LISTED STRIP TIES (BLACK) FOR PLENUM APPLICATIONS

HLSP3S-X0	12.00	305.0	0.75	19.1	3.20	81.0	50	222	10	100
HLSP5S-X0	18.00	457.0			5.00	127.0				

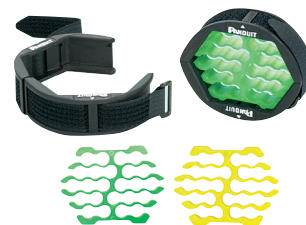


Underfloor (Plenum Application)  
HLSP3S-X12

## Cable Bundle Organizing Tool

Part Number	Description	Recommended for Cable Outer Diameter Range	Use the Following Insert	Std. Pkg. Qty.	Std. Ctn. Qty.
CBOT24K	Kit contains two organizing inserts, insert clamp, and hook & loop fastener.	0.180" – 0.248" (4.57mm – 6.30mm) 0.230" – 0.310" (5.84mm – 7.87mm)	Fluorescent Green Fluorescent Yellow	1	10

Note: Performance testing of organized bundles was completed using Panduit cable.



Arranges up to 24 cables to optimize bundle diameter and improve installed appearance.

### WORLDWIDE SUBSIDIARIES AND SALES OFFICES

PANDUIT US/CANADA  
Phone: 800.777.3300

PANDUIT EUROPE LTD.  
London, UK  
Phone: 44.20.8601.7200

PANDUIT SINGAPORE PTE. LTD.  
Republic of Singapore  
Phone: 65.6305.7575

PANDUIT JAPAN  
Tokyo, Japan  
Phone: 81.3.6863.6000

PANDUIT LATIN AMERICA  
Guadalajara, Mexico  
Phone: 52.33.3777.6000

PANDUIT AUSTRALIA PTY. LTD.  
Victoria, Australia  
Phone: 61.3.9794.9020

For a copy of Panduit product warranties, log on to [www.panduit.com/warranty](http://www.panduit.com/warranty)

**PANDUIT®**

For more information  
Visit us at [www.panduit.com](http://www.panduit.com)  
Contact Customer Service by email: [cs@panduit.com](mailto:cs@panduit.com)  
or by phone: 800.777.3300

© 2024 Panduit Corp.  
ALL RIGHTS RESERVED.  
FRCB45-SA-ENG  
10/2024