



# PVC Conduit and Fittings

The Right People, The Right Products, The Right Places



**Atkore**<sup>™</sup>  
Allied Tube  
& Conduit

# Building better together.

As the leader in infrastructure solutions, Atkore has brought together the brands that you've trusted for years, allowing us to better partner with those who are building what's next.



**BUILDING BETTER  
TOGETHER**

# Table of Contents

---

|           |   |           |                        |
|-----------|---|-----------|------------------------|
| <b>4</b>  | About Atkore                                | <b>26</b> | 5° Couplings           |
| <b>5</b>  | About Allied Tube & Conduit                 | <b>26</b> | Slip Meter Risers      |
| <b>6</b>  | Frequently Asked Questions                  | <b>27</b> | End Bells              |
| <b>7</b>  | Physical Properties                         | <b>27</b> | Reducer Bushings       |
| <b>7</b>  | Part Number Guide                           | <b>28</b> | Duct Spacers           |
| <b>8</b>  | Schedule 40 and 80 Rigid PVC Conduit        | <b>29</b> | Junction Boxes         |
| <b>9</b>  | Utility Duct Rigid PVC Conduit              | <b>29</b> | Conduit Hubs           |
| <b>10</b> | C-Duct                                      | <b>30</b> | Access Fittings        |
| <b>11</b> | Schedule 40 Standard Radius Elbows          | <b>32</b> | Meter Offsets          |
| <b>14</b> | Schedule 80 Standard Radius Elbows          | <b>32</b> | Two Hole Pipe Straps   |
| <b>17</b> | Schedule 40 Plain End Special Radius Elbows | <b>32</b> | Pull Elbows            |
| <b>18</b> | Schedule 40 Bell End Special Radius Elbows  | <b>32</b> | Expandable Plugs       |
| <b>19</b> | Schedule 80 Special Radius Elbows           | <b>32</b> | Temporary Plugs        |
| <b>20</b> | Utility and C-Duct Special Radius Elbows    | <b>33</b> | Junction Box Adapters  |
| <b>21</b> | Fiberglass Elbows                           | <b>33</b> | Service Entrance Heads |
| <b>22</b> | Couplings                                   | <b>33</b> | End Caps               |
| <b>23</b> | Adapters                                    | <b>34</b> | F-Series Boxes         |
| <b>24</b> | Expansion Couplings                         | <b>35</b> | Covers                 |
| <b>24</b> | Repair Sleeve Couplings                     | <b>36</b> | Cement                 |
| <b>25</b> | Swedge Couplings                            | <b>36</b> | Cleaner                |
| <b>25</b> | Swedge Reducers                             | <b>36</b> | Primer                 |

*Special orders are non cancelable, refundable or returnable*

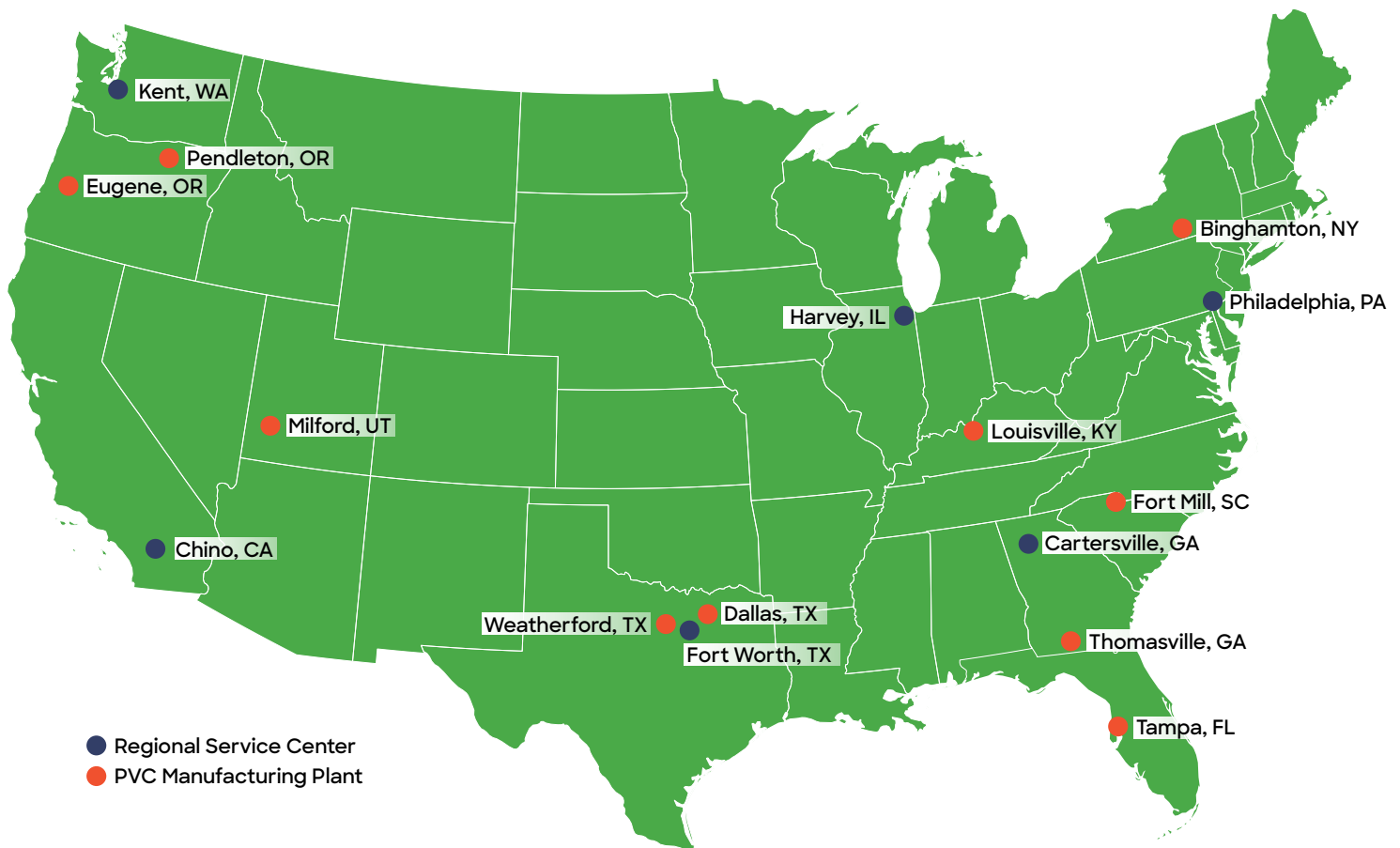
# About Atkore

Atkore is forging a future where our employees, customers, suppliers, shareholders and communities are building better together – a future focused on serving the customer and powering and protecting the world.

With approximately 5,000 employees and manufacturing and distribution facilities worldwide, Atkore is a leading provider of electrical, safety and infrastructure solutions.

## Our Mission

To be the customer's first choice by providing unmatched quality, delivery and value based on sustainable excellence in strategy, people and processes.



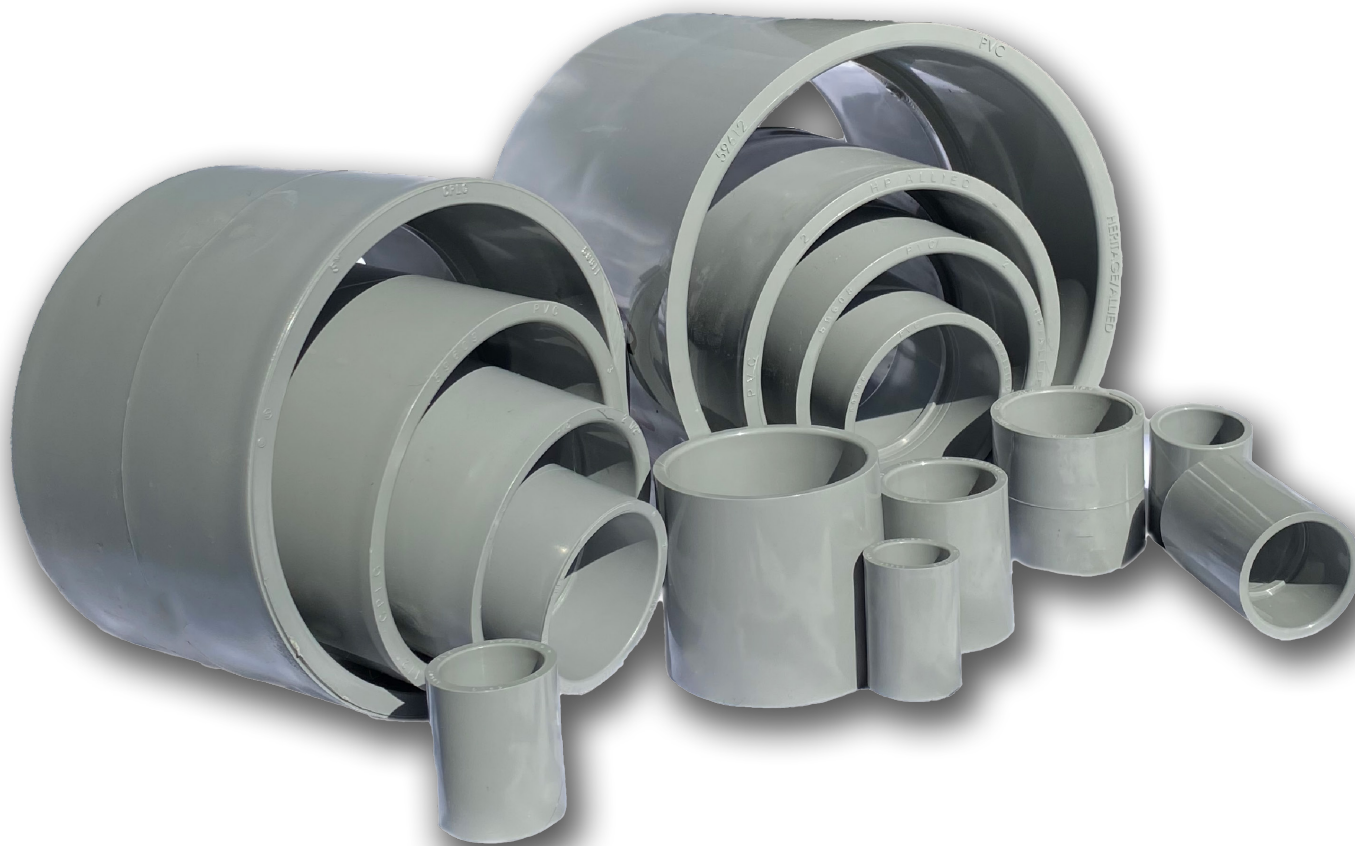
# About Allied Tube & Conduit

---

Allied Tube & Conduit offers a complete line of rigid PVC conduit, utility duct and fittings. We have an extensive national manufacturing network which enables us to best serve our customers.

Our products have proven durable and effective for years of maintenance-free performance in underground, encased and exposed applications. Allied Tube & Conduit is vigilant about quality and innovation to bring our customers the top products on the market.

**The right people, the right products, the right places**



# Frequently Asked Questions

---

## What are typical applications?

- Commercial and Residential
- Transportation and Highway
- Airports and Marinas
- Cable, Data and Communication Lines
- Utilities

## What are advantages of PVC Pipe?

- Corrosion Resistant
- Long Life
- Impact Resistant
- Labor Savings
- Lightweight
- Non-Magnetic
- Self-Extinguishing
- Non-Galvanic



## What determines the need for Schedule 80 conduit as opposed to Schedule 40?

In alignment with NEMA TC-2 and NEC, Section 352.10 (F), Schedule 40 and 80 can both be used in standard underground and above ground applications. Schedule 80 is designed for heavy-duty applications above ground, where there are areas of potential physical damage.

## Are Schedule 80 and 40 electrical conduit and fabricated fittings suited for direct sunlight?

Schedule 40 and 80 conduit and fabricated fittings are “Sunlight Resistant” in accordance with UL 651. Refer to the Atkore Sunlight Exposure Technical Bulletin for additional information.

## Visit [Atkore.com](https://www.atkore.com) for:

- Technical Resources
- Product Specification Sheets
- New product releases and company updates

# Physical Properties and Part Number Guide

## Physical Properties of PVC

| Property                                    | Unit                           | Value                  |
|---|--------------------------------|------------------------|
| <b>Physical</b>                             |                                |                        |
| Specific Gravity                            | —                              | 1.4 - 1.6              |
| Tensile Strength                            | psi                            | 5,000 - 7,000          |
| Compressive Strength                        | psi                            | 8,500 - 9,000          |
| Flexural Strength                           | psi                            | 11,000 - 12,000        |
| Tensile Modulus                             | psi                            | 400,000 - 500,000      |
| Izod Impact Strength                        | [ft-lb] / inch of notch        | 0.65                   |
| Hardness                                    | Durometer D                    | 77                     |
| <b>Thermal</b>                              |                                |                        |
| Coefficient of Linear Thermal Expansion     | in/(in-°F)                     | 3.0 x 10 <sup>-5</sup> |
| Deflection Temperature Under Load (264 psi) | °F                             | 140 - 158              |
| Thermal Conductivity                        | BTU-in/hr-ft <sup>2</sup> - °F | 1.0 - 1.3              |
| <b>Electrical</b>                           |                                |                        |
| Dielectric Strength                         | Volts per mil                  | 1,100                  |
| <b>Other</b>                                |                                |                        |
| Water Absorption                            | % max in 24 hrs at 72 °F       | 0.5%                   |
| Flammability                                | —                              | Self-extinguishing     |

Note: Values shown are approximate (typical) and are provided for informational use only

## Part Number Guide

| Rigid PVC Pipe  | Fittings   | Elbows   |
|---|--|--|
| <p>Schedule 40 ½" 10' Conduit</p> <p><b>4005010</b></p> <p>Schedule      Trade Size      Length in Feet</p> | <p>4" Coupling</p> <p><b>CP40</b></p> <p>Product      Trade Size</p> | <p>Schedule 40 2" x 90 x 36" Plain End Special Radius Elbow</p> <p><b>F402009036P</b></p> <p>Schedule      Trade Size      Degree      Radius      Plain End</p> |

# Schedule 40 and 80 Rigid PVC Conduit

| Trade Size         | Part Number |         | Dimensions (in)          |                        | Crate Quantity (ft) |         |
|--------------------|-------------|---------|--------------------------|------------------------|---------------------|---------|
|                    | 10 Foot     | 20 Foot | Average Outside Diameter | Minimum Wall Thickness | 10 Foot             | 20 Foot |
| <b>Schedule 40</b> |             |         |                          |                        |                     |         |
| ½                  | 4005010     | 4005020 | 0.840                    | 0.109                  | 6,000               | 12,000  |
| ¾                  | 4007510     | 4007520 | 1.050                    | 0.113                  | 4,400               | 8,800   |
| 1                  | 4010010     | 4010020 | 1.315                    | 0.133                  | 3,600               | 7,200   |
| 1 ¼                | 4012510     | 4012520 | 1.660                    | 0.140                  | 3,300               | 6,600   |
| 1 ½                | 4015010     | 4015020 | 1.900                    | 0.145                  | 2,250               | 4,500   |
| 2                  | 4020010     | 4020020 | 2.375                    | 0.154                  | 1,400               | 2,800   |
| 2 ½                | 4025010     | 4025020 | 2.875                    | 0.203                  | 930                 | 1,860   |
| 3                  | 4030010     | 4030020 | 3.500                    | 0.216                  | 880                 | 1,760   |
| 3 ½                | 4035010     | 4035020 | 4.000                    | 0.226                  | 630                 | 1,260   |
| 4                  | 4040010     | 4040020 | 4.500                    | 0.237                  | 570                 | 1,140   |
| 5                  | 4050010     | 4050020 | 5.563                    | 0.258                  | 380                 | 760     |
| 6                  | 4060010     | 4060020 | 6.625                    | 0.280                  | 260                 | 520     |
| 8*                 | 4080010     | 4080020 | 8.625                    | 0.322                  | 140                 | 280     |
| <b>Schedule 80</b> |             |         |                          |                        |                     |         |
| ½                  | 8005010     | 8005020 | 0.840                    | 0.147                  | 6,000               | 12,000  |
| ¾                  | 8007510     | 8007520 | 1.050                    | 0.154                  | 4,400               | 8,800   |
| 1                  | 8010010     | 8010020 | 1.315                    | 0.179                  | 3,600               | 7,200   |
| 1 ¼                | 8012510     | 8012520 | 1.660                    | 0.191                  | 3,300               | 6,600   |
| 1 ½                | 8015010     | 8015020 | 1.900                    | 0.200                  | 2,250               | 4,500   |
| 2                  | 8020010     | 8020020 | 2.375                    | 0.218                  | 1,400               | 2,800   |
| 2 ½                | 8025010     | 8025020 | 2.875                    | 0.276                  | 930                 | 1,860   |
| 3                  | 8030010     | 8030020 | 3.500                    | 0.300                  | 880                 | 1,760   |
| 3 ½                | 8035010     | 8035020 | 4.000                    | 0.318                  | 630                 | 1,260   |
| 4                  | 8040010     | 8040020 | 4.500                    | 0.337                  | 570                 | 1,140   |
| 5                  | 8050010     | 8050020 | 5.563                    | 0.375                  | 380                 | 760     |
| 6                  | 8060010     | 8060020 | 6.625                    | 0.432                  | 260                 | 520     |
| 8*                 | 8080010     | 8080020 | 8.625                    | 0.500                  | 140                 | 280     |

\*8 inch products are not included in UL 651 and are therefore not certified by ETL  
 Product availability varies by region and minimum run quantities may apply  
 Conforms to UL 651 and NEMA TC 2  
 Sunlight resistant per UL 651  
 Rated for use with 90 degree C wiring

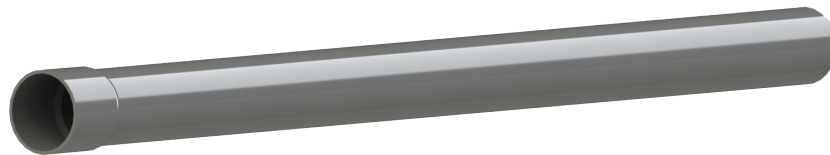




# Utility Duct Rigid PVC Conduit

| Trade Size    | Part Number | Dimensions (in)          |                        | Crate Quantity (ft) |
|---------------|-------------|--------------------------|------------------------|---------------------|
|               |             | Average Outside Diameter | Minimum Wall Thickness |                     |
| <b>DB 60</b>  |             |                          |                        |                     |
| 2             | 6020020     | 2.375                    | 0.060                  | 2,800               |
| 3             | 6030020     | 3.500                    | 0.092                  | 1,760               |
| 4             | 6040020     | 4.500                    | 0.121                  | 1,140               |
| 5             | 6050020     | 5.563                    | 0.152                  | 760                 |
| 6             | 6060020     | 6.625                    | 0.182                  | 520                 |
| <b>DB 100</b> |             |                          |                        |                     |
| 3             | 1030020     | 3.500                    | 0.112                  | 1,760               |
| 4             | 1040020     | 4.500                    | 0.145                  | 1,140               |
| 5             | 1050020     | 5.563                    | 0.179                  | 760                 |
| 6             | 1060020     | 6.625                    | 0.213                  | 520                 |
| <b>DB 120</b> |             |                          |                        |                     |
| 1             | 1210020     | 1.315                    | 0.060                  | 7,200               |
| 1 ½           | 1215020     | 1.900                    | 0.060                  | 4,500               |
| 2             | 1220020     | 2.375                    | 0.077                  | 2,800               |
| 3             | 1230020     | 3.500                    | 0.118                  | 1,760               |
| 4             | 1240020     | 4.500                    | 0.154                  | 1,140               |
| 5             | 1250020     | 5.563                    | 0.191                  | 760                 |
| 6             | 1260020     | 6.625                    | 0.227                  | 520                 |

Product availability varies by region and minimum run quantities may apply  
 Conforms to NEMA TC 6 & 8 and ASTM F 512  
 Standard overall length is 20 feet



# Utility and C-Duct Rigid PVC Conduit

## Utility

| Trade Size   | Part Number | Dimensions (in)          |                        | Crate Quantity (ft) |
|--------------|-------------|--------------------------|------------------------|---------------------|
|              |             | Average Outside Diameter | Minimum Wall Thickness |                     |
| <b>EB 20</b> |             |                          |                        |                     |
| 3            | 2030020     | 3.500                    | 0.061                  | 1,760               |
| 4            | 2040020     | 4.500                    | 0.082                  | 1,140               |
| 5            | 2050020     | 5.563                    | 0.103                  | 760                 |
| 6            | 2060020     | 6.625                    | 0.125                  | 520                 |
| <b>EB 35</b> |             |                          |                        |                     |
| 3            | 3530020     | 3.500                    | 0.076                  | 1,760               |
| 4            | 3540020     | 4.500                    | 0.100                  | 1,140               |
| 5            | 3550020     | 5.563                    | 0.126                  | 760                 |
| 6            | 3560020     | 6.625                    | 0.152                  | 520                 |

Product availability varies by region and minimum run quantities may apply  
 EB products conform to NEMA TC 6 & 8 and ASTM F 512  
 Standard overall length is 20 feet

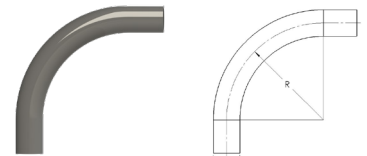
## C-Duct Rigid PVC Conduit

| Trade Size    | Part Number | Dimensions (in)          |                        | Crate Quantity (ft) |
|---------------|-------------|--------------------------|------------------------|---------------------|
|               |             | Average Outside Diameter | Minimum Wall Thickness |                     |
| <b>C-Duct</b> |             |                          |                        |                     |
| 4 (white)     | 9040020WHT  | 4.350                    | 0.140                  | 1,260               |
| 4 (gray)      | 9040020     | 4.350                    | 0.140                  | 1,260               |

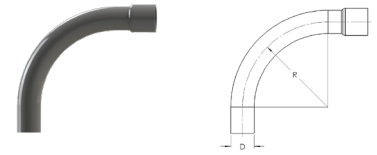
C-Duct compliance with CAO-8546 varies by region  
 Pipe is produced in 20-foot laying lengths

# Schedule 40 Standard Radius Elbows

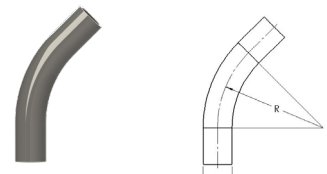
| Trade Size | Part Number |          | Dimensions (in)             |          | Package Quantity |
|------------|-------------|----------|-----------------------------|----------|------------------|
|            | Plain End   | Bell End | Average Outside Diameter, D | Radius R |                  |
| <b>90°</b> |             |          |                             |          |                  |
| ½          | F4005090P   | F4005090 | 0.840                       | 4.00     | 50               |
| ¾          | F4007590P   | F4007590 | 1.050                       | 4.50     | 25               |
| 1          | F4010090P   | F4010090 | 1.315                       | 5.75     | 25               |
| 1 ¼        | F4012590P   | F4012590 | 1.660                       | 7.25     | 25               |
| 1 ½        | F4015090P   | F4015090 | 1.900                       | 8.25     | 25               |
| 2          | F4020090P   | F4020090 | 2.375                       | 9.50     | 25               |
| 2 ½        | F4025090P   | F4025090 | 2.875                       | 10.50    | 50               |
| 3          | F4030090P   | F4030090 | 3.500                       | 13.00    | 50               |
| 3 ½        | F4035090P   | F4035090 | 4.000                       | 15.00    | 25               |
| 4          | F4040090P   | F4040090 | 4.500                       | 16.00    | 25               |
| 5          | F4050090P   | F4050090 | 5.563                       | 24.00    | 20               |
| 6          | F4060090P   | F4060090 | 6.625                       | 30.00    | 16               |
| <b>45°</b> |             |          |                             |          |                  |
| ½          | F4005045P   | F4005045 | 0.840                       | 4.00     | 50               |
| ¾          | F4007545P   | F4007545 | 1.050                       | 4.50     | 25               |
| 1          | F4010045P   | F4010045 | 1.315                       | 5.75     | 25               |
| 1 ¼        | F4012545P   | F4012545 | 1.660                       | 7.25     | 25               |
| 1 ½        | F4015045P   | F4015045 | 1.900                       | 8.25     | 25               |
| 2          | F4020045P   | F4020045 | 2.375                       | 9.50     | 25               |
| 2 ½        | F4025045P   | F4025045 | 2.875                       | 10.50    | 50               |
| 3          | F4030045P   | F4030045 | 3.500                       | 13.00    | 50               |
| 3 ½        | F4035045P   | F4035045 | 4.000                       | 15.00    | 25               |
| 4          | F4040045P   | F4040045 | 4.500                       | 16.00    | 25               |
| 5          | F4050045P   | F4050045 | 5.563                       | 24.00    | 20               |
| 6          | F4060045P   | F4060045 | 6.625                       | 30.00    | 16               |



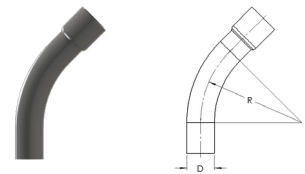
90° Plain End



90° Bell End



45° Plain End

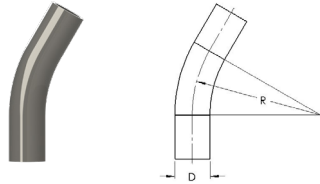


45° Bell End

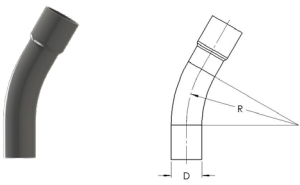
Product availability varies by region and minimum run quantities may apply  
Listed to UL 651



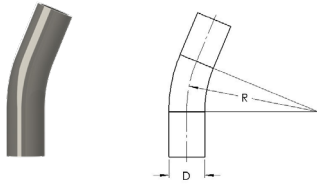
# Schedule 40 Standard Radius Elbows



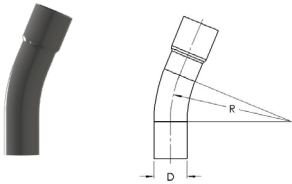
30° Plain End



30° Bell End



22½° Plain End



22½° Bell End

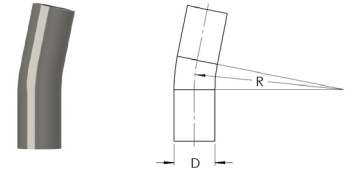
| Trade Size   | Part Number |          | Dimensions (in)             |          | Package Quantity |
|--------------|-------------|----------|-----------------------------|----------|------------------|
|              | Plain End   | Bell End | Average Outside Diameter, D | Radius R |                  |
| <b>30°</b>   |             |          |                             |          |                  |
| ¾            | F4007530P   | F4007530 | 1.050                       | 4.50     | 25               |
| 1            | F4010030P   | F4010030 | 1.315                       | 5.75     | 25               |
| 1 ¼          | F4012530P   | F4012530 | 1.660                       | 7.25     | 25               |
| 1 ½          | F4015030P   | F4015030 | 1.900                       | 8.25     | 25               |
| 2            | F4020030P   | F4020030 | 2.375                       | 9.50     | 25               |
| 2 ½          | F4025030P   | F4025030 | 2.875                       | 10.50    | 20               |
| 3            | F4030030P   | F4030030 | 3.500                       | 13.00    | 50               |
| 3 ½          | F4035030P   | F4035030 | 4.000                       | 15.00    | 25               |
| 4            | F4040030P   | F4040030 | 4.500                       | 16.00    | 25               |
| 5            | F4050030P   | F4050030 | 5.563                       | 24.00    | 20               |
| 6            | F4060030P   | F4060030 | 6.625                       | 30.00    | 16               |
| <b>22 ½°</b> |             |          |                             |          |                  |
| ¾            | F4007522P   | F4007522 | 1.050                       | 4.50     | 25               |
| 1            | F4010022P   | F4010022 | 1.315                       | 5.75     | 25               |
| 1 ¼          | F4012522P   | F4012522 | 1.660                       | 7.25     | 25               |
| 1 ½          | F4015022P   | F4015022 | 1.900                       | 8.25     | 25               |
| 2            | F4020022P   | F4020022 | 2.375                       | 9.50     | 25               |
| 2 ½          | F4025022P   | F4025022 | 2.875                       | 10.50    | 20               |
| 3            | F4030022P   | F4030022 | 3.500                       | 13.00    | 50               |
| 3 ½          | F4035022P   | F4035022 | 4.000                       | 15.00    | 25               |
| 4            | F4040022P   | F4040022 | 4.500                       | 16.00    | 25               |
| 5            | F4050022P   | F4050022 | 5.563                       | 24.00    | 20               |
| 6            | F4060022P   | F4060022 | 6.625                       | 30.00    | 16               |

Product availability varies by region and minimum run quantities may apply  
Listed to UL 651

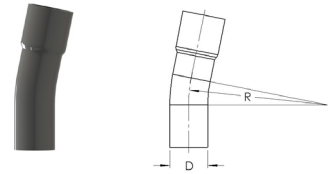


# Schedule 40 Standard Radius Elbows

| Trade Size     | Part Number |          | Dimensions (in)             |          | Package Quantity |
|----------------|-------------|----------|-----------------------------|----------|------------------|
|                | Plain End   | Bell End | Average Outside Diameter, D | Radius R |                  |
| <b>11 1/4°</b> |             |          |                             |          |                  |
| 3/4            | F4007511P   | F4007511 | 1.050                       | 4.50     | 25               |
| 1              | F4010011P   | F4010011 | 1.315                       | 5.75     | 25               |
| 1 1/4          | F4012511P   | F4012511 | 1.660                       | 7.25     | 25               |
| 1 1/2          | F4015011P   | F4015011 | 1.900                       | 8.25     | 25               |
| 2              | F4020011P   | F4020011 | 2.375                       | 9.50     | 25               |
| 2 1/2          | F4025011P   | F4025011 | 2.875                       | 10.50    | 20               |
| 3              | F4030011P   | F4030011 | 3.500                       | 13.00    | 50               |
| 3 1/2          | F4035011P   | F4035011 | 4.000                       | 15.00    | 25               |
| 4              | F4040011P   | F4040011 | 4.500                       | 16.00    | 25               |
| 5              | F4050011P   | F4050011 | 5.563                       | 24.00    | 20               |
| 6              | F4060011P   | F4060011 | 6.625                       | 30.00    | 16               |



**11 1/4° Plain End**

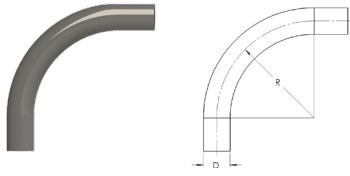


**11 1/4° Bell End**

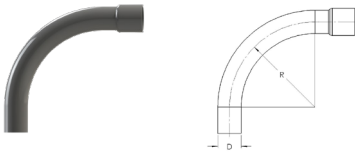
Product availability varies by region and minimum run quantities may apply  
Listed to UL 651



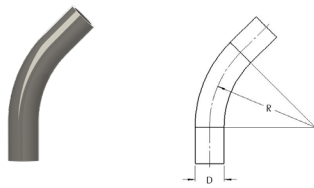
# Schedule 80 Standard Radius Elbows



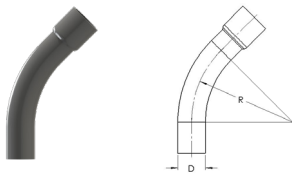
90° Plain End



90° Bell End



45° Plain End



45° Bell End

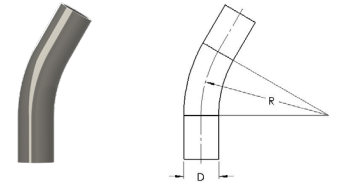
| Trade Size | Part Number |          | Dimensions (in)             |          | Package Quantity |
|------------|-------------|----------|-----------------------------|----------|------------------|
|            | Plain End   | Bell End | Average Outside Diameter, D | Radius R |                  |
| <b>90°</b> |             |          |                             |          |                  |
| ½          | F8005090P   | F8005090 | 0.840                       | 4.00     | 50               |
| ¾          | F8007590P   | F8007590 | 1.050                       | 4.50     | 25               |
| 1          | F8010090P   | F8010090 | 1.315                       | 5.75     | 25               |
| 1 ¼        | F8012590P   | F8012590 | 1.660                       | 7.25     | 25               |
| 1 ½        | F8015090P   | F8015090 | 1.900                       | 8.25     | 25               |
| 2          | F8020090P   | F8020090 | 2.375                       | 9.50     | 25               |
| 2 ½        | F8025090P   | F8025090 | 2.875                       | 10.50    | 50               |
| 3          | F8030090P   | F8030090 | 3.500                       | 13.00    | 50               |
| 3 ½        | F8035090P   | F8035090 | 4.000                       | 15.00    | 25               |
| 4          | F8040090P   | F8040090 | 4.500                       | 16.00    | 25               |
| 5          | F8050090P   | F8050090 | 5.563                       | 24.00    | 20               |
| 6          | F8060090P   | F8060090 | 6.625                       | 30.00    | 16               |
| <b>45°</b> |             |          |                             |          |                  |
| ½          | F8005045P   | F8005045 | 0.840                       | 4.00     | 50               |
| ¾          | F8007545P   | F8007545 | 1.050                       | 4.50     | 25               |
| 1          | F8010045P   | F8010045 | 1.315                       | 5.75     | 25               |
| 1 ¼        | F8012545P   | F8012545 | 1.660                       | 7.25     | 25               |
| 1 ½        | F8015045P   | F8015045 | 1.900                       | 8.25     | 25               |
| 2          | F8020045P   | F8020045 | 2.375                       | 9.50     | 25               |
| 2 ½        | F8025045P   | F8025045 | 2.875                       | 10.50    | 50               |
| 3          | F8030045P   | F8030045 | 3.500                       | 13.00    | 50               |
| 3 ½        | F8035045P   | F8035045 | 4.000                       | 15.00    | 25               |
| 4          | F8040045P   | F8040045 | 4.500                       | 16.00    | 25               |
| 5          | F8050045P   | F8050045 | 5.563                       | 24.00    | 20               |
| 6          | F8060045P   | F8060045 | 6.625                       | 30.00    | 16               |

Product availability varies by region and minimum run quantities may apply  
Listed to UL 651

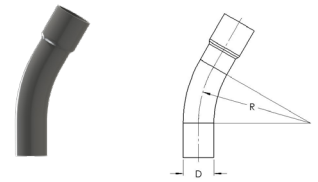


# Schedule 80 Standard Radius Elbows

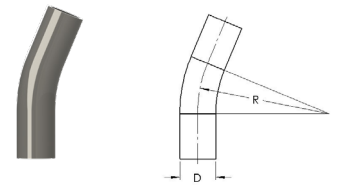
| Trade Size   | Part Number |          | Dimensions (in)             |          | Package Quantity |
|--------------|-------------|----------|-----------------------------|----------|------------------|
|              | Plain End   | Bell End | Average Outside Diameter, D | Radius R |                  |
| <b>30°</b>   |             |          |                             |          |                  |
| ¾            | F8007530P   | F8007530 | 1.050                       | 4.50     | 25               |
| 1            | F8010030P   | F8010030 | 1.315                       | 5.75     | 25               |
| 1 ¼          | F8012530P   | F8012530 | 1.660                       | 7.25     | 25               |
| 1 ½          | F8015030P   | F8015030 | 1.900                       | 8.25     | 25               |
| 2            | F8020030P   | F8020030 | 2.375                       | 9.50     | 25               |
| 2 ½          | F8025030P   | F8025030 | 2.875                       | 10.50    | 20               |
| 3            | F8030030P   | F8030030 | 3.500                       | 13.00    | 50               |
| 3 ½          | F8035030P   | F8035030 | 4.000                       | 15.00    | 25               |
| 4            | F8040030P   | F8040030 | 4.500                       | 16.00    | 25               |
| 5            | F8050030P   | F8050030 | 5.563                       | 24.00    | 20               |
| 6            | F8060030P   | F8060030 | 6.625                       | 30.00    | 16               |
| <b>22 ½°</b> |             |          |                             |          |                  |
| ¾            | F8007522P   | F8007522 | 1.050                       | 4.50     | 25               |
| 1            | F8010022P   | F8010022 | 1.315                       | 5.75     | 25               |
| 1 ¼          | F8012522P   | F8012522 | 1.660                       | 7.25     | 25               |
| 1 ½          | F8015022P   | F8015022 | 1.900                       | 8.25     | 25               |
| 2            | F8020022P   | F8020022 | 2.375                       | 9.50     | 25               |
| 2 ½          | F8025022P   | F8025022 | 2.875                       | 10.50    | 20               |
| 3            | F8030022P   | F8030022 | 3.500                       | 13.00    | 50               |
| 3 ½          | F8035022P   | F8035022 | 4.000                       | 15.00    | 25               |
| 4            | F8040022P   | F8040022 | 4.500                       | 16.00    | 25               |
| 5            | F8050022P   | F8050022 | 5.563                       | 24.00    | 20               |
| 6            | F8060022P   | F8060022 | 6.625                       | 30.00    | 16               |



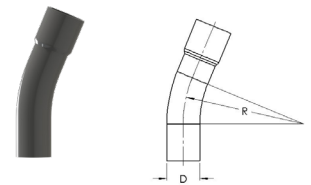
30° Plain End



30° Bell End



22½° Plain End

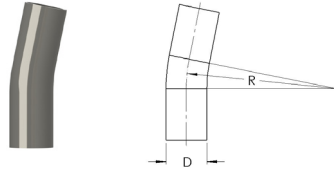


22½° Bell End

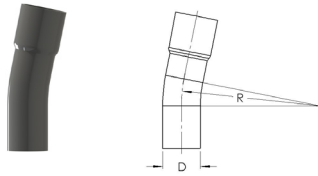
Product availability varies by region and minimum run quantities may apply  
Listed to UL 651



# Schedule 80 Standard Radius Elbows



11 1/4° Plain End



11 1/4° Bell End

| Trade Size | Part Number |          | Dimensions (in)             |          | Package Quantity |
|------------|-------------|----------|-----------------------------|----------|------------------|
|            | Plain End   | Bell End | Average Outside Diameter, D | Radius R |                  |
| 11 1/4°    |             |          |                             |          |                  |
| 3/4        | F8007511P   | F8007511 | 1.050                       | 4.50     | 25               |
| 1          | F8010011P   | F8010011 | 1.315                       | 5.75     | 25               |
| 1 1/4      | F8012511P   | F8012511 | 1.660                       | 7.25     | 25               |
| 1 1/2      | F8015011P   | F8015011 | 1.900                       | 8.25     | 25               |
| 2          | F8020011P   | F8020011 | 2.375                       | 9.50     | 25               |
| 2 1/2      | F8025011P   | F8025011 | 2.875                       | 10.50    | 20               |
| 3          | F8030011P   | F8030011 | 3.500                       | 13.00    | 50               |
| 3 1/2      | F8035011P   | F8035011 | 4.000                       | 15.00    | 25               |
| 4          | F8040011P   | F8040011 | 4.500                       | 16.00    | 25               |
| 5          | F8050011P   | F8050011 | 5.563                       | 24.00    | 20               |
| 6          | F8060011P   | F8060011 | 6.625                       | 30.00    | 16               |

Product availability varies by region and minimum run quantities may apply  
Listed to UL 651





# Schedule 40 Plain End Special Radius Elbows

| Trade Size | Part Number |             |             |             |             |             | Package Quantity |
|------------|-------------|-------------|-------------|-------------|-------------|-------------|------------------|
|            | 18" Radius  | 24" Radius  | 30" Radius  | 36" Radius  | 48" Radius  | 60" Radius  |                  |
| <b>90°</b> |             |             |             |             |             |             |                  |
| 1          | F401009018P | F401009024P | F401009030P | F401009036P | F401009048P | F401009060P | 25               |
| 1 ¼        | F401259018P | F401259024P | F401259030P | F401259036P | F401259048P | F401259060P | 25               |
| 1 ½        | F401509018P | F401509024P | F401509030P | F401509036P | F401509048P | F401509060P | 25               |
| 2          | F402009018P | F402009024P | F402009030P | F402009036P | F402009048P | F402009060P | 50               |
| 2 ½        | F402509018P | F402509024P | F402509030P | F402509036P | F402509048P | F402509060P | 50               |
| 3          | F403009018P | F403009024P | F403009030P | F403009036P | F403009048P | F403009060P | 50               |
| 3 ½        | F403509018P | F403509024P | F403509030P | F403509036P | F403509048P | F403509060P | 25               |
| 4          | F404009018P | F404009024P | F404009030P | F404009036P | F404009048P | F404009060P | 25               |
| 5          | -           | F4050090P   | F405009030P | F405009036P | F405009048P | F405009060P | 20               |
| 6          | -           | -           | F4060090P   | F406009036P | F406009048P | F406009060P | 16               |
| <b>45°</b> |             |             |             |             |             |             |                  |
| 1          | F401004518P | F401004524P | F401004530P | F401004536P | F401004548P | F401004560P | 25               |
| 1 ¼        | F401254518P | F401254524P | F401254530P | F401254536P | F401254548P | F401254560P | 25               |
| 1 ½        | F401504518P | F401504524P | F401504530P | F401504536P | F401504548P | F401504560P | 25               |
| 2          | F402004518P | F402004524P | F402004530P | F402004536P | F402004548P | F402004560P | 50               |
| 2 ½        | F402504518P | F402504524P | F402504530P | F402504536P | F402504548P | F402504560P | 50               |
| 3          | F403004518P | F403004524P | F403004530P | F403004536P | F403004548P | F403004560P | 50               |
| 3 ½        | F403504518P | F403504524P | F403504530P | F403504536P | F403504548P | F403504560P | 25               |
| 4          | F404004518P | F404004524P | F404004530P | F404004536P | F404004548P | F404004560P | 25               |
| 5          | -           | F4050045P   | F405004530P | F405004536P | F405004548P | F405004560P | 20               |
| 6          | -           | -           | F4060045P   | F406004536P | F406004548P | F406004560P | 16               |

Call for availability on 30°, 22 ½° and 11 ¼° special radius elbows  
 Product availability varies by region and minimum run quantities may apply  
 Listed to UL 651



# Schedule 40 Bell End Special Radius Elbows

| Trade Size | Part Number |            |            |            |            |            | Package Quantity |
|------------|-------------|------------|------------|------------|------------|------------|------------------|
|            | 18" Radius  | 24" Radius | 30" Radius | 36" Radius | 48" Radius | 60" Radius |                  |
| <b>90°</b> |             |            |            |            |            |            |                  |
| 1          | F401009018  | F401009024 | F401009030 | F401009036 | F401009048 | F401009060 | 25               |
| 1 ¼        | F401259018  | F401259024 | F401259030 | F401259036 | F401259048 | F401259060 | 25               |
| 1 ½        | F401509018  | F401509024 | F401509030 | F401509036 | F401509048 | F401509060 | 25               |
| 2          | F402009018  | F402009024 | F402009030 | F402009036 | F402009048 | F402009060 | 50               |
| 2 ½        | F402509018  | F402509024 | F402509030 | F402509036 | F402509048 | F402509060 | 50               |
| 3          | F403009018  | F403009024 | F403009030 | F403009036 | F403009048 | F403009060 | 50               |
| 3 ½        | F403509018  | F403509024 | F403509030 | F403509036 | F403509048 | F403509060 | 25               |
| 4          | F404009018  | F404009024 | F404009030 | F404009036 | F404009048 | F404009060 | 25               |
| 5          | -           | F4050090   | F405009030 | F405009036 | F405009048 | F405009060 | 20               |
| 6          | -           | -          | F4060090   | F406009036 | F406009048 | F406009060 | 16               |
| <b>45°</b> |             |            |            |            |            |            |                  |
| 1          | F401004518  | F401004524 | F401004530 | F401004536 | F401004548 | F401004560 | 25               |
| 1 ¼        | F401254518  | F401254524 | F401254530 | F401254536 | F401254548 | F401254560 | 25               |
| 1 ½        | F401504518  | F401504524 | F401504530 | F401504536 | F401504548 | F401504560 | 25               |
| 2          | F402004518  | F402004524 | F402004530 | F402004536 | F402004548 | F402004560 | 50               |
| 2 ½        | F402504518  | F402504524 | F402504530 | F402504536 | F402504548 | F402504560 | 50               |
| 3          | F403004518  | F403004524 | F403004530 | F403004536 | F403004548 | F403004560 | 50               |
| 3 ½        | F403504518  | F403504524 | F403504530 | F403504536 | F403504548 | F403504560 | 25               |
| 4          | F404004518  | F404004524 | F404004530 | F404004536 | F404004548 | F404004560 | 25               |
| 5          | -           | F4050045   | F405004530 | F405004536 | F405004548 | F405004560 | 20               |
| 6          | -           | -          | F4060045   | F406004536 | F406004548 | F406004560 | 16               |

Call for availability on 30°, 22 ½° and 11 ¼° special radius elbows  
 Product availability varies by region and minimum run quantities may apply  
 Listed to UL 651



# Schedule 80 Special Radius Elbows

| Trade Size           | Part Number |             |             | Package Quantity |
|----------------------|-------------|-------------|-------------|------------------|
|                      | 24" Radius  | 36" Radius  | 48" Radius  |                  |
| <b>Plain End 90°</b> |             |             |             |                  |
| 2                    | F802009024P | F802009036P | F802009048P | 50               |
| 2 ½                  | F802509024P | F802509036P | F802509048P | 50               |
| 3                    | F803009024P | F803009036P | F803009048P | 50               |
| 4                    | F804009024P | F804009036P | F804009048P | 25               |
| 5                    | F8050090P   | F805009036P | F805009048P | 20               |
| 6                    | -           | F806009036P | F806009048P | 16               |
| <b>Plain End 45°</b> |             |             |             |                  |
| 2                    | F802004524P | F802004536P | F802004548P | 50               |
| 2 ½                  | F802504524P | F802504536P | F802504548P | 50               |
| 3                    | F803004524P | F803004536P | F803004548P | 50               |
| 4                    | F804004524P | F804004536P | F804004548P | 25               |
| 5                    | F8050045P   | F805004536P | F805004548P | 20               |
| 6                    | -           | F806004536P | F806004548P | 16               |
| <b>Bell End 90°</b>  |             |             |             |                  |
| 2                    | F802009024  | F802009036  | F802009048  | 50               |
| 2 ½                  | F802509024  | F802509036  | F802509048  | 50               |
| 3                    | F803009024  | F803009036  | F803009048  | 50               |
| 4                    | F804009024  | F804009036  | F804009048  | 25               |
| 5                    | F8050090    | F805009036  | F805009048  | 20               |
| 6                    | -           | F806009036  | F806009048  | 16               |
| <b>Bell End 45°</b>  |             |             |             |                  |
| 2                    | F802004524  | F802004536  | F802004548  | 50               |
| 2 ½                  | F802504524  | F802504536  | F802504548  | 50               |
| 3                    | F803004524  | F803004536  | F803004548  | 50               |
| 4                    | F804004524  | F804004536  | F804004548  | 25               |
| 5                    | F8050045    | F805004536  | F805004548  | 20               |
| 6                    | -           | F806004536  | F806004548  | 16               |

Call for availability on 30°, 22 ½ ° and 11 ¼ ° special radius elbows  
 Product availability varies by region and minimum run quantities may apply  
 Listed to UL 651



# Utility and C-Duct Special Radius Elbows

## Utility Duct

| Trade Size     | Part Number |            |            |            | Package Quantity |
|----------------|-------------|------------|------------|------------|------------------|
|                | 24" Radius  | 36" Radius | 48" Radius | 60" Radius |                  |
| <b>90°</b>     |             |            |            |            |                  |
| 1              | F121009024  | F121009036 | F121009048 | F121009060 | 25               |
| 2              | F122009024  | F122009036 | F122009048 | F122009060 | 50               |
| 3              | F123009024  | F123009036 | F123009048 | F123009060 | 50               |
| 4              | F124009024  | F124009036 | F124009048 | F124009060 | 25               |
| 5              | F125009024  | F125009036 | F125009048 | F125009060 | 20               |
| 6              | -           | F126009036 | F126009048 | F126009060 | 16               |
| <b>45°</b>     |             |            |            |            |                  |
| 1              | F121004524  | F121004536 | F121004548 | F121004560 | 25               |
| 2              | F122004524  | F122004536 | F122004548 | F122004560 | 50               |
| 3              | F123004524  | F123004536 | F123004548 | F123004560 | 50               |
| 4              | F124004524  | F124004536 | F124004548 | F124004560 | 25               |
| 5              | F125004524  | F125004536 | F125004548 | F125004560 | 20               |
| 6              | -           | F126004536 | F126004548 | F126004560 | 16               |
| <b>22 1/2°</b> |             |            |            |            |                  |
| 1              | F121002224  | F121002236 | F121002248 | F121002260 | 25               |
| 2              | F122002224  | F122002236 | F122002248 | F122002260 | 50               |
| 3              | F123002224  | F123002236 | F123002248 | F123002260 | 50               |
| 4              | F124002224  | F124002236 | F124002248 | F124002260 | 25               |
| 5              | F125002224  | F125002236 | F125002248 | F125002260 | 20               |
| 6              | -           | F126002236 | F126002248 | F126002260 | 16               |

Sweeps made from DB 120, but can be used with any EB or DB duct

## 4" C-Duct

| Degree  | Part Number |            |            |            | Package Quantity |
|---------|-------------|------------|------------|------------|------------------|
|         | 24" Radius  | 36" Radius | 48" Radius | 60" Radius |                  |
| 90°     | F904009024  | F904009036 | F904009048 | F904009060 | 25               |
| 45°     | F904004524  | F904004536 | F904004548 | F904004560 | 25               |
| 22 1/2° | F904002224  | F904002236 | F904002248 | F904002260 | 25               |
| 11 1/4° | F904001124  | F904001136 | F904001148 | F904001160 | 25               |

If you don't see the product you require, please call for availability  
Product availability varies by region and minimum run quantities may apply

# Fiberglass Elbows

## Red Stripe BxB

| Trade Size | Part Number    |                |                |                | Package Quantity |
|------------|----------------|----------------|----------------|----------------|------------------|
|            | 24" Radius     | 36" Radius     | 48" Radius     | 60" Radius     |                  |
| 90°        |                |                |                |                |                  |
| 2          | 10-209024RS-2P | 10-209036RS-2P | -              | -              | 1                |
| 3          | 10-309024RS-2P | 10-309036RS-2P | -              | -              | 1                |
| 4          | -              | 10-409036RS-2P | -              | -              | 1                |
| 6          | -              | 10-609036RS-2P | 10-609048RS-2P | 10-609060RS-2P | 1                |
| 45°        |                |                |                |                |                  |
| 3          | -              | 10-304536RS-2P | -              | -              | 1                |
| 4          | -              | 10-404536RS-2P | -              | -              | 1                |
| 6          | -              | 10-604536RS-2P | -              | -              | 1                |

Product availability varies by region



## Solid Black BxB

| Trade Size | Part Number  |              |              |              | Package Quantity |
|------------|--------------|--------------|--------------|--------------|------------------|
|            | 24" Radius   | 36" Radius   | 48" Radius   | 60" Radius   |                  |
| 90°        |              |              |              |              |                  |
| 2          | 10-209024-2P | 10-209036-2P | -            | -            | 1                |
| 3          | 10-309024-2P | 10-309036-2P | -            | -            | 1                |
| 4          | 10-409024-2P | 10-409036-2P | 10-409048-2P | -            | 1                |
| 5          | -            | 10-509036-2P | -            | -            | 1                |
| 6          | -            | 10-609036-2P | 10-609048-2P | 10-609060-2P | 1                |
| 45°        |              |              |              |              |                  |
| 2          | 10-204524-2P | -            | -            | -            | 1                |
| 3          | -            | 10-304536-2P | -            | -            | 1                |
| 4          | 10-404524-2P | 10-404536-2P | -            | -            | 1                |
| 5          | -            | 10-504536-2P | -            | -            | 1                |
| 6          | -            | 10-604536-2P | 10-604548-2P | -            | 1                |

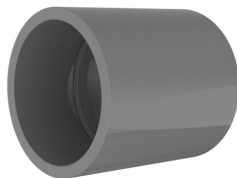
Product availability varies by region



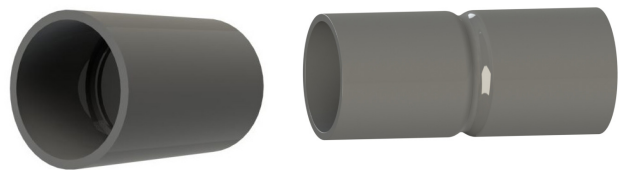
# Couplings

| Trade Size                 | Part Number | Package Quantity |
|----------------------------|-------------|------------------|
| <b>Couplings</b>           |             |                  |
| 1/2                        | CP05        | 200              |
| 3/4                        | CP07        | 125              |
| 1                          | CP10        | 70               |
| 1 1/4                      | CP12        | 40               |
| 1 1/2                      | CP15        | 30               |
| 2                          | CP20        | 40               |
| 2 1/2                      | CP25        | 20               |
| 3                          | CP30        | 40               |
| 3 1/2                      | CP35        | 30               |
| 4                          | CP40        | 20               |
| 5                          | CP50        | 10               |
| 6                          | CP60        | 8                |
| 8*                         | CP80        | 2                |
| <b>Long Line Couplings</b> |             |                  |
| 1 1/2                      | LLC15       | 25               |
| 2                          | LLC20       | 20               |
| 2 1/2                      | LLC25       | 25               |
| 3                          | LLC30       | 25               |
| 4                          | LLC40       | 15               |
| 5**                        | LLC50       | 8                |
| 6**                        | LLC60       | 4                |

\*8 inch products are not included in UL 651  
Conforms to NEMA TC-3



**Coupling**  
Listed to UL 651

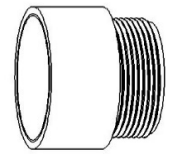


**Long Line Coupling**  
Conforms to NEMA TC-3

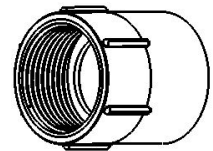
\*\*Product appearance  
may vary by region

# Adapters

| Trade Size               | Part Number | Package Quantity |
|--------------------------|-------------|------------------|
| <b>Terminal Adapters</b> |             |                  |
| 1/2                      | TA05        | 200              |
| 3/4                      | TA07        | 125              |
| 1                        | TA10        | 70               |
| 1 1/4                    | TA12        | 40               |
| 1 1/2                    | TA15        | 30               |
| 2                        | TA20        | 40               |
| 2 1/2                    | TA25        | 20               |
| 3                        | TA30        | 40               |
| 3 1/2                    | TA35        | 30               |
| 4                        | TA40        | 20               |
| 5                        | TA50        | 10               |
| 6                        | TA60        | 8                |
| 8*                       | TA80        | 3                |
| <b>Female Adapters</b>   |             |                  |
| 1/2                      | FA05        | 200              |
| 3/4                      | FA07        | 125              |
| 1                        | FA10        | 70               |
| 1 1/4                    | FA12        | 40               |
| 1 1/2                    | FA15        | 30               |
| 2                        | FA20        | 40               |
| 2 1/2                    | FA25        | 20               |
| 3                        | FA30        | 40               |
| 3 1/2                    | FA35        | 30               |
| 4                        | FA40        | 20               |
| 5                        | FA50        | 10               |
| 6                        | FA60        | 8                |
| 8*                       | FA80        | 2                |



Terminal Adapters



Female Adapters

\*8 inch products are not included in UL 651



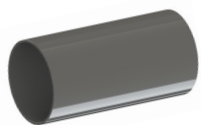
# Expansion Couplings and Repair Sleeve Couplings



Expansion Coupling  
One Piece



Expansion Coupling  
Two Piece



Repair Sleeve Coupling

| Trade Size                            | Part Number | Package Quantity |
|---------------------------------------|-------------|------------------|
| <b>Expansion Coupling - One Piece</b> |             |                  |
| ½                                     | EJ-105      | 10               |
| ¾                                     | EJ-107      | 50               |
| 1                                     | EJ-110      | 40               |
| 1 ¼                                   | EJ-112      | 25               |
| 1 ½                                   | EJ-115      | 15               |
| 2                                     | EJ-120      | 10               |
| <b>Expansion Coupling - Two Piece</b> |             |                  |
| ½                                     | EJ05        | 25               |
| ¾                                     | EJ07        | 25               |
| 1                                     | EJ10        | 40               |
| 1 ¼                                   | EJ12        | 20               |
| 1 ½                                   | EJ15        | 20               |
| 2                                     | EJ20        | 10               |
| 2 ½                                   | EJ25        | 9                |
| 3                                     | EJ30        | 9                |
| 3 ½                                   | EJ35        | 5                |
| 4                                     | EJ40        | 5                |
| 5                                     | EJ50        | 1                |
| 6                                     | EJ60        | 1                |
| <b>Repair Sleeve Couplings</b>        |             |                  |
| 1                                     | 40REC10     | 50               |
| 1 ¼                                   | 40REC12     | 50               |
| 1 ½                                   | 40REC15     | 50               |
| 2                                     | 40REC20     | 50               |
| 2 ½                                   | 40REC25     | 30               |
| 3                                     | 40REC30     | 30               |
| 4                                     | 40REC40     | 30               |
| 5                                     | 40REC50     | 15               |
| 6                                     | 40REC60     | 10               |

Product availability may vary by region

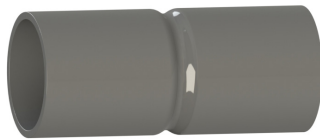


# Swedge Couplings and Swedge Reducers

## Swedge Couplings

| Trade Size         | Part Number | Package Quantity |
|--------------------|-------------|------------------|
| <b>DB</b>          |             |                  |
| 1 ½                | 60SWC15     | 50               |
| 2                  | 60SWC20     | 50               |
| 3                  | 60SWC30     | 30               |
| 4                  | 60SWC40     | 30               |
| 5                  | 60SWC50     | 15               |
| 6                  | 60SWC60     | 10               |
| <b>Schedule 40</b> |             |                  |
| 1                  | 40SWC10     | 50               |
| 1 ¼                | 40SWC12     | 50               |
| 1 ½                | 40SWC15     | 50               |
| 2                  | 40SWC20     | 50               |
| 2 ½                | 40SWC25     | 30               |
| 3                  | 40SWC30     | 30               |
| 4                  | 40SWC40     | 30               |
| 5                  | 40SWC50     | 15               |
| 6                  | 40SWC60     | 10               |
| 8                  | 40SWC80     | 6                |
| <b>Schedule 80</b> |             |                  |
| 2                  | 80SWC20     | 50               |
| 3                  | 80SWC30     | 30               |
| <b>C-Duct</b>      |             |                  |
| 4 C-Duct to 4 Duct | C60SWC40    | 30               |
| 4                  | CSWC40      | 30               |

Product availability may vary by region



Swedge Coupling

## Swedge Reducers Spigot x Spigot

| Trade Size         | Part Number | Package Quantity |
|--------------------|-------------|------------------|
| <b>DB</b>          |             |                  |
| 2 ½ x 2            | 60SW2520SS  | 100              |
| 3 x 2              | 60SW3020SS  | 80               |
| 3 x 2 ½            | 60SW3025SS  | 80               |
| 4 x 3              | 60SW4030SS  | 60               |
| 5 x 4              | 60SW5040SS  | 36               |
| 6 x 5              | 60SW6050SS  | 36               |
| <b>Schedule 40</b> |             |                  |
| 1 ½ x 1            | 40SW1510SS  | 25               |
| 2 x 1 ½            | 40SW2015SS  | 25               |
| 2 ½ x 2            | 40SW2520SS  | 80               |
| 3 x 2              | 40SW3020SS  | 80               |
| 3 x 2 ½            | 40SW3025SS  | 80               |
| 4 x 3              | 40SW4030SS  | 60               |
| 5 x 4              | 40SW5040SS  | 36               |
| 6 x 5              | 40SW6050SS  | 36               |
| <b>Schedule 80</b> |             |                  |
| 3 x 2              | 80SW3020SS  | 80               |
| 4 x 3              | 80SW4030SS  | 60               |
| 5 x 4              | 80SW5040SS  | 36               |

Product availability may vary by region



Swedge Reducer Spigot x Spigot

# 5° Couplings and Slip Meter Risers

## 5° Couplings

| Trade Size         | Part Number |               | Package Quantity |
|--------------------|-------------|---------------|------------------|
|                    | Bell x Bell | Bell x Spigot |                  |
| <b>DB</b>          |             |               |                  |
| 3                  | 605EC30BB   | 605EC30BS     | 30               |
| 4                  | 605EC40BB   | 605EC40BS     | 30               |
| 5                  | 605EC50BB   | 605EC50BS     | 15               |
| 6                  | 605EC60BB   | 605EC60BS     | 10               |
| <b>Schedule 40</b> |             |               |                  |
| 2                  | 405EC20BB   | 405EC20BS     | 50               |
| 3                  | 405EC30BB   | 405EC30BS     | 30               |
| 4                  | 405EC40BB   | 405EC40BS     | 30               |
| 5                  | 405EC50BB   | 405EC50BS     | 15               |
| 6                  | 405EC60BB   | 405EC60BS     | 10               |
| <b>C-Duct</b>      |             |               |                  |
| 4                  | C5EC40BB    | C5EC40BS      | 30               |

Product availability may vary by region



Bell x Bell

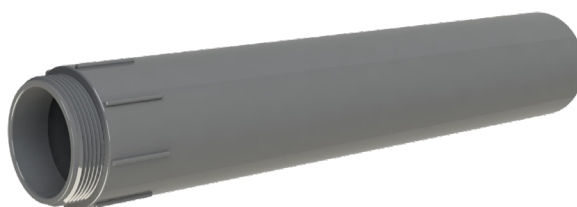


Bell x Spigot

## Slip Meter Risers

| Trade Size         | Part Number | Package Quantity |
|--------------------|-------------|------------------|
| <b>Schedule 40</b> |             |                  |
| 2                  | MTR40200    | 10               |
| 2 ½                | MTR40250    | 8                |
| 3                  | MTR40300    | 5                |
| 4                  | MTR40400    | 3                |

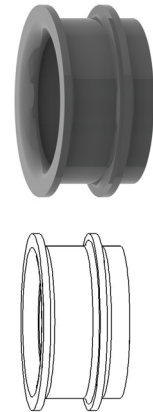
Product availability may vary by region



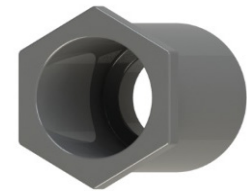
Meter Riser

# End Bells and Reducer Bushings

| Trade Size              | Part Number | Package Quantity |
|-------------------------|-------------|------------------|
| <b>End Bells</b>        |             |                  |
| ½                       | MEB05       | 200              |
| ¾                       | MEB07       | 200              |
| 1                       | MEB10       | 50               |
| 1 ¼                     | MEB12       | 50               |
| 1 ½                     | MEB15       | 50               |
| 2                       | MEB20       | 40               |
| 2 ½                     | MEB25       | 30               |
| 3                       | MEB30       | 50               |
| 3 ½                     | MEB35       | 50               |
| 4                       | MEB40       | 50               |
| 5                       | MEB50       | 25               |
| 6                       | MEB60       | 15               |
| 8                       | MEB80       | 1                |
| <b>Reducer Bushings</b> |             |                  |
| ¾ x ½                   | MR0705      | 100              |
| 1 x ½                   | MR1005      | 100              |
| 1 x ¾                   | MR1007      | 100              |
| 1 ¼ x ¾                 | MR1207      | 50               |
| 1 ¼ x 1                 | MR1210      | 50               |
| 1 ½ x 1                 | MR1510      | 50               |
| 1 ½ x 1 ¼               | MR1512      | 50               |
| 2 x 1                   | MR2010      | 50               |
| 2 x 1 ¼                 | MR2012      | 25               |
| 2 x 1 ½                 | MR2015      | 25               |
| 2 ½ x 2                 | MR2520      | 15               |
| 3 x 2                   | MR3020      | 25               |
| 3 x 2 ½                 | MR3025      | 15               |
| 4 x 2                   | MR4020      | 15               |
| 4 x 3                   | MR4030      | 10               |
| 4 x 3 ½                 | MR4035      | 15               |

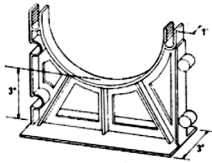
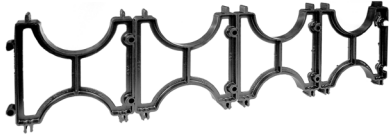


End Bell



Reducer Bushing

# Duct Spacers



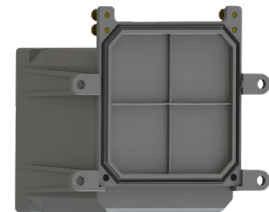
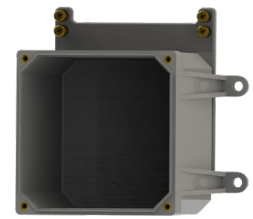
Spacers

| Trade Size | Part Number          | Package Quantity | Part Number  | Package Quantity |
|------------|----------------------|------------------|--------------|------------------|
|            | Intermediate Spacers |                  | Base Spacers |                  |
| 2 x 1 ½    | IV2015               | 350              | BV2015       | 250              |
| 2 x 2      | IV2020               | 300              | BV2020       | 225              |
| 2 x 3      | IV2030               | 200              | BV2030       | 225              |
| 3 x 1 ½    | IV3015               | 225              | BV3015       | 175              |
| 3 x 2      | IV3020               | 200              | BV3020       | 155              |
| 3 x 3      | IV3030               | 125              | BV3030       | 150              |
| 4 x 1      | IV4010               | 200              | BV4010       | 175              |
| 4 x 1 ½    | IV4015               | 150              | BV4015       | 140              |
| 4 x 2      | IV4020               | 125              | BV4020       | 140              |
| 4 x 3      | IV4030               | 90               | BV4030       | 120              |
| 5 x 1 ½    | IV5015               | 100              | BV5015       | 120              |
| 5 x 2      | IV5020               | 100              | BV5020       | 120              |
| 5 x 3      | IV5030               | 80               | BV5030       | 100              |
| 6 x 1 ½    | IV6015               | 100              | BV6015       | 100              |
| 6 x 2      | IV6020               | 90               | BV6020       | 100              |
| 6 x 3      | IV6030               | 70               | BV6030       | 95               |
| 8 x 2      | IV8020               | 60               | BV8020       | 50               |

Product availability may vary by region

# Junction Box & Conduit Hub

| Trade Size          | Part Number | Package Quantity |
|---------------------|-------------|------------------|
| <b>Junction Box</b> |             |                  |
| 4 x 4 x 2           | JB442       | 16               |
| 4 x 4 x 4           | JB444       | 10               |
| 4 x 4 x 6           | JB446       | 8                |
| 5 x 5 x 2           | JB552       | 12               |
| 6 x 6 x 4           | JB664       | 12               |
| 6 x 6 x 6           | JB666       | 8                |
| 8 x 8 x 4           | JB884       | 8                |
| 8 x 8 x 7           | JB887       | 4                |
| 12 x 12 x 4         | JB12124     | 4                |
| 12 x 12 x 6         | JB12126     | 4                |
| 12 x 12 x 8         | JB12128     | 2                |
| <b>Conduit Hub</b>  |             |                  |
| 1/2                 | CH05        | 30               |
| 3/4                 | CH07        | 25               |
| 1                   | CH10        | 12               |
| 1 1/4               | CH12        | 8                |
| 1 1/2               | CH15        | 8                |
| 2                   | CH20        | 5                |



Junction Box



Conduit Hub



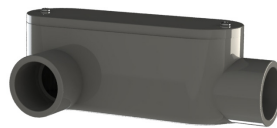
# Access Fittings

| Trade Size | LB          |                  | LR          |                  | LL          |                  |
|------------|-------------|------------------|-------------|------------------|-------------|------------------|
|            | Part Number | Package Quantity | Part Number | Package Quantity | Part Number | Package Quantity |
| ½          | LB05        | 25               | LR05        | 25               | LL05        | 25               |
| ¾          | LB07        | 15               | LR07        | 20               | LL07        | 20               |
| 1          | LB10        | 10               | LR10        | 15               | LL10        | 15               |
| 1 ¼        | LB12        | 10               | LR12        | 10               | LL12        | 10               |
| 1 ½        | LB15        | 10               | LR15        | 10               | LL15        | 10               |
| 2          | LB20        | 10               | LR20        | 10               | LL20        | 10               |
| 2 ½        | LB25        | 4                | LR25        | 4                | LL25        | 4                |
| 3          | LB30        | 4                | LR30        | 4                | LL30        | 4                |
| 3 ½        | LB35        | 4                | LR35        | 4                | LL35        | 5                |
| 4          | LB40        | 4                | LR40        | 4                | LL40        | 5                |

Product availability may vary by region



Type LB



Type LR

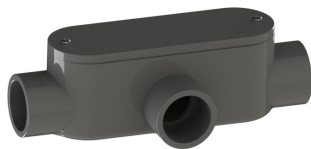


Type LL

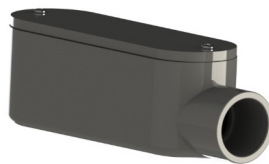
# Access Fittings

| Trade Size | T           |                  | E           |                  | C           |                  |
|------------|-------------|------------------|-------------|------------------|-------------|------------------|
|            | Part Number | Package Quantity | Part Number | Package Quantity | Part Number | Package Quantity |
| 1/2        | T05         | 25               | E05         | 30               | C05         | 30               |
| 3/4        | T07         | 10               | E07         | 20               | C07         | 20               |
| 1          | T10         | 10               | E10         | 15               | C10         | 15               |
| 1 1/4      | T12         | 15               | E12         | 20               | C12         | 15               |
| 1 1/2      | T15         | 10               | E15         | 10               | C15         | 10               |
| 2          | T20         | 10               | E20         | 15               | C20         | 15               |
| 2 1/2      | T25         | 4                | E25         | 4                | C25         | 4                |
| 3          | T30         | 4                | E30         | 5                | C30         | 4                |
| 3 1/2      | T35         | 4                | E35         | 4                | C35         | 4                |
| 4          | T40         | 4                | E40         | 4                | C40         | 4                |

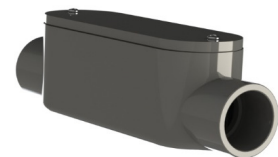
Product availability may vary by region



Type T



Type E



Type C



Meter Offset



Two Hole Pipe Strap



Pull Elbow



Expandable Plug



Temporary Plug

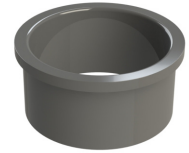
| Trade Size                  | Part Number | Package Quantity |
|-----------------------------|-------------|------------------|
| <b>Meter Offsets</b>        |             |                  |
| 1 ¼                         | MO12        | 50               |
| 2                           | MO20        | 25               |
| <b>Two Hole Pipe Straps</b> |             |                  |
| ½                           | PS05        | 100              |
| ¾                           | PS07        | 100              |
| 1                           | PS10        | 100              |
| 1 ¼                         | PS12        | 50               |
| 1 ½                         | PS15        | 25               |
| 2                           | PS20        | 25               |
| 2 ½                         | PS25        | 100              |
| 3                           | PS30        | 100              |
| 4                           | PS40        | 50               |
| <b>Pull Elbows</b>          |             |                  |
| ½ & ¾                       | PULEL0705   | 50               |
| <b>Expandable Plugs</b>     |             |                  |
| 2                           | KW20L       | 50               |
| 2 ½                         | KW25L       | 30               |
| 3                           | KW30L       | 30               |
| 4                           | KW40L       | 30               |
| 5                           | KW50L       | 20               |
| <b>Temporary Plugs</b>      |             |                  |
| 1                           | UTP10       | 100              |
| 1 ¼                         | UTP12       | 100              |
| 1 ½                         | UTP15       | 100              |
| 2                           | UTP20       | 100              |
| 2 ½                         | UTP25       | 100              |
| 3                           | UTP30       | 80               |
| 3 ½                         | UTP35       | 80               |
| 4                           | UTP40       | 50               |
| 5                           | UTP50       | 40               |
| 6                           | UTP60       | 30               |
| 8                           | UTP80       | 12               |

Product availability may vary by region



# Accessories

| Trade Size                    | Part Number | Package Quantity |
|-------------------------------|-------------|------------------|
| <b>Junction Box Adapters</b>  |             |                  |
| 1/2                           | JBA05       | 100              |
| 3/4                           | JBA07       | 100              |
| 1                             | JBA10       | 100              |
| 1 1/4                         | JBA12       | 50               |
| 1 1/2                         | JBA15       | 50               |
| 2                             | JBA20       | 25               |
| 2 1/2                         | JBA25       | 10               |
| 3                             | JBA30       | 20               |
| 3 1/2                         | JBA35       | 10               |
| 4                             | JBA40       | 10               |
| <b>Service Entrance Heads</b> |             |                  |
| 1/2                           | MH05        | 25               |
| 3/4                           | MH07        | 20               |
| 1                             | MH10        | 15               |
| 1 1/4                         | MH12        | 20               |
| 1 1/2                         | MH15        | 5                |
| 2                             | MH20        | 5                |
| 2 1/2                         | MH25        | 2                |
| 3                             | MH30        | 2                |
| 3 1/2                         | MH35        | 2                |
| 4                             | MH40        | 2                |
| <b>End Caps</b>               |             |                  |
| 1/2                           | EC05        | 200              |
| 3/4                           | EC07        | 150              |
| 1                             | EC10        | 100              |
| 1 1/4                         | EC12        | 40               |
| 1 1/2                         | EC15        | 40               |
| 2                             | EC20        | 20               |
| 2 1/2                         | EC25        | 15               |
| 3                             | EC30        | 10               |
| 3 1/2                         | EC35        | 25               |
| 4                             | EC40        | 12               |
| 5                             | EC50        | 5                |
| 6                             | EC60        | 10               |
| 8                             | EC80        | 1                |



Junction Box Adapter



Service Entrance Head



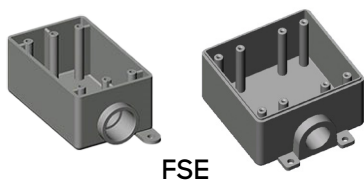
End Cap

Product availability may vary by region

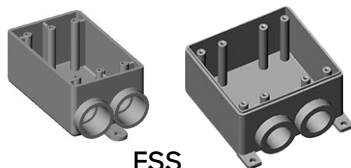
# F-Series Boxes

| Type            | Trade Size         | Part Number   | Package Quantity |
|-----------------|--------------------|---------------|------------------|
| <b>FSE</b>      |                    |               |                  |
| Single Gang     | 1/2                | FSE05         | 10               |
| Single Gang     | 3/4                | FSE07         | 10               |
| Single Gang     | 1                  | FSE10         | 10               |
| Single Gang     | 1/2 - 3/4 - 1 Deep | FSED050710    | 10               |
| Double Gang     | 1/2 - 3/4 - 1      | FSE-2-050710  | 5                |
| <b>FSS</b>      |                    |               |                  |
| Single Gang     | 1/2                | FSS05         | 10               |
| Single Gang     | 3/4                | FSS07         | 10               |
| Single Gang     | 1                  | FSS10         | 10               |
| Double Gang     | 1/2 - 3/4 - 1      | FSS-2-050710  | 5                |
| <b>FSC</b>      |                    |               |                  |
| Single Gang     | 1/2                | FSC05         | 10               |
| Single Gang     | 3/4                | FSC07         | 10               |
| Single Gang     | 1                  | FSC10         | 10               |
| Single Gang     | 1/2 - 3/4 - 1 Deep | FSCD050710    | 10               |
| Double Gang     | 1/2 - 3/4 - 1      | FSC-2-050710  | 5                |
| <b>FSCC</b>     |                    |               |                  |
| Single Gang     | 1/2                | FSCC05        | 10               |
| Single Gang     | 3/4                | FSCC07        | 10               |
| Single Gang     | 1                  | FSCC10        | 10               |
| Double Gang     | 1/2 - 3/4 - 1      | FSCC-2-050710 | 5                |
| <b>FD Blank</b> |                    |               |                  |
| Single Gang     | Deep               | FD            | 20               |
| Double Gang     | Deep               | FD-2          | 10               |

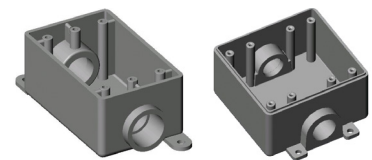
Product availability may vary by region



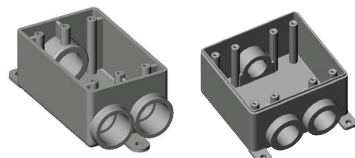
FSE



FSS



FSC



FSCC

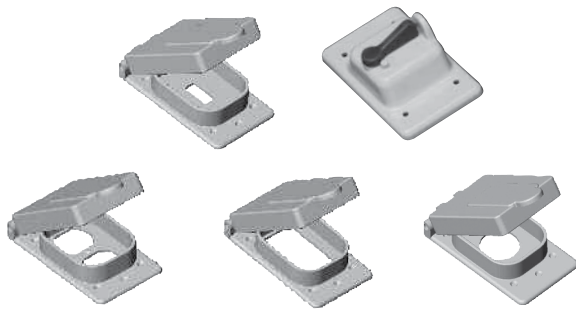


FD Blank

# Covers

| Type                       | Description                    | Part Number | Package Quantity |
|----------------------------|--------------------------------|-------------|------------------|
| <b>Weatherproof Covers</b> |                                |             |                  |
| Single Gang                | Toggle Switch                  | WTG 15/10   | 20               |
| Single Gang                | Toggle Switch with Lock        | VSC 15/10   | 10               |
| Single Gang                | Duplex Receptacle              | WDR 15/10   | 20               |
| Single Gang                | GFI Receptacle                 | WGF 15/10   | 20               |
| Single Gang                | Single Receptacle - 15 amps    | WTL 15      | 20               |
| Double Gang                | Double Toggle Switch with Lock | VSC20-2     | 10               |
| Double Gang                | Double GFI Receptacle          | VSGG20-2    | 15               |
| Double Gang                | Double Duplex Receptacle       | VSDD20-2    | 15               |
| <b>Covers</b>              |                                |             |                  |
| Single Gang                | Toggle Switch                  | TSC 15/10   | 100              |
| Single Gang                | Duplex Receptacle              | DRC 15/10   | 100              |
| Single Gang                | Single Blank with Gasket       | FSKIT       | 50               |
| Double Gang                | Double Switch                  | TSC20-2     | 50               |
| Double Gang                | Double Duplex                  | DRC20-2     | 50               |
| Double Gang                | Double Blank with Gasket       | BRC20-2     | 50               |

Product availability may vary by region



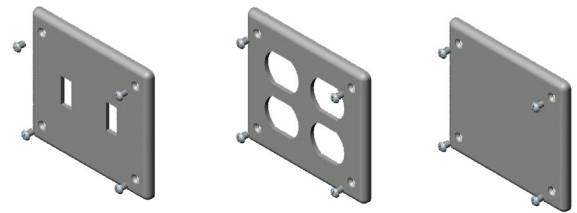
Single Gang Weatherproof Covers



Double Gang Weatherproof Covers



Single Gang Covers



Double Gang Covers

# Cement, Cleaner, Primer

| Type                 | Size      | Part Number | Package Quantity |
|----------------------|-----------|-------------|------------------|
| <b>Cement</b>        |           |             |                  |
| Regular Body - Clear | Pint      | CEMCR10     | 12               |
| Regular Body - Clear | Quart     | CEMCR20     | 12               |
| Medium Body - Clear  | Half Pint | CEMC05      | 24               |
| Medium Body - Clear  | Pint      | CEMC10      | 12               |
| Medium Body - Clear  | Quart     | CEMC20      | 12               |
| Medium Body - Clear  | Gallon    | CEMC80      | 6                |
| Medium Body - Gray   | Quart     | CEMG20      | 12               |
| All Weather - Clear  | Pint      | CWC10       | 12               |
| All Weather - Clear  | Quart     | CWC20       | 12               |
| <b>Cleaner</b>       |           |             |                  |
| Clear                | Quart     | CLN20       | 12               |
| <b>Primer</b>        |           |             |                  |
| Clear                | Quart     | PRMC20      | 12               |
| Purple               | Pint      | PRMP10      | 12               |
| Purple               | Quart     | PRMP20      | 12               |

Product availability may vary by region



# Notes

---

A series of 28 horizontal lines for taking notes.





**BUILDING BETTER  
TOGETHER**

**Atkore**  
16100 S. Lathrop Ave.  
Harvey, IL 60426

[atkore.com](https://atkore.com)

**Atkore**  
Want to join a company that helps you build  
the mindset, skill set and tool set for success?  
Visit us at [atkore.com/careers](https://atkore.com/careers)

©2024 Atkore. All rights reserved.  
ATCE-CAT-7023-2408