

## FEATURES & SPECIFICATIONS

**INTENDED USE** — Built on the compact, low-profile Z strip channel, this LED strip offers long maintenance-free life, several color temperatures, lumen outputs and lengths. Ideal for new construction and retrofit applications in T5 and T8 lengths. Ideal for uplight and downlight in commercial, retail, manufacturing, warehouse, cove and display applications. **Certain airborne contaminants can diminish the integrity of acrylic and/or polycarbonate.** [Click here for Acrylic-Polycarbonate Compatibility table for suitable uses.](#)

**CONSTRUCTION** — Compact-design channel and cover are formed from code-gauge cold-rolled steel. Easy to install row aligner included for continuous row mounting.

Finish: Paint options include high-gloss, baked white enamel (WH), galvanized (GALV), matte black (MB) and smoke gray (SKGY). Five-stage iron phosphate pre-treatment ensures superior paint adhesion and rust resistance.

**OPTICS** — Standard diffuse snap on/snap off lens eliminates pixels, improves uniformity and minimizes glare. L/LENS option available.

**ELECTRICAL** — Utilizes high-output LEDs integrated on a two-layer circuit board, ensuring cool-running operation. Optional internal pluggable wiring harness for reduced labor cost in row mounting applications. (See PLR ordering information on page 3.) Electronic LED driver is rated for 75 input watts maximum (see Operational Data on page two for actual wattage consumption), **multi-volt input and 0-10V dimming standard.** This fixture is designed to withstand a maximum line surge of 1.5kV at 0.75kA combination wave for indoor locations, for applications requiring higher level of protection additional surge protection must be provided.

LEDs provide nominal 80 CRI at 3000 K, 3500 K, 4000 K, or 5000 K.

Lumen output up to 2,000 lumens per foot. In 86°F (30°C) ambient environments. Luminaire should be installed in applications where ambient temperatures do not exceed 86°F (30°C).

**INSTALLATION** — Tool-less channel cover for easy installation.

Fixture may be surface mounted (with or without ZSPRG hanger), pendant or stem mounted with appropriate mounting options. Three-point aligner locks in place for easy continuous row mounting.

**LISTINGS** — CSA certified to US and Canadian safety standards. For use in damp locations between -4°F (-20°C) and 86°F (30°C).

DesignLights Consortium® (DLC) qualified product. Not all versions of this product may be DLC qualified. Please check the DLC Qualified Products List at [www.designlights.org](http://www.designlights.org) to confirm which versions are qualified.

**WARRANTY** — 5-year limited warranty. Complete warranty terms located at [www.acuitybrands.com/CustomerResources/Terms\\_and\\_conditions.aspx](http://www.acuitybrands.com/CustomerResources/Terms_and_conditions.aspx)

**Note:** Actual performance may differ as a result of end-user environment and application.

All values are design or typical values, measured under laboratory conditions at 25 °C.

Specifications subject to change without notice.

Catalog Number
Notes
Type



LED Striplight

# ZL1N

24", 48" and 96" Lengths



L/Lens

Lensed

### Capable Luminaire

This item is an A+ capable luminaire, which has been designed and tested to provide consistent color appearance and out-of-the-box control compatibility with simple commissioning.

- All configurations of this luminaire meet the Acuity Brands' specification for chromatic consistency
- This luminaire is part of an A+ Certified solution for nLight® or XPoint™ Wireless control networks marked by a **shaded background**\*

To learn more about A+, visit [www.acuitybrands.com/aplus](http://www.acuitybrands.com/aplus).

\*See ordering tree for details

# ZL1N LED Striplight



A+ Capable options indicated by this color background.

## ORDERING INFORMATION

Lead times will vary depending on options selected. Consult with your sales representative.

**Example:** ZL1N L48 3000LM FST MVOLT 40K 80CRI WH

Series	Length	Nominal lumens <sup>1</sup>	Diffuser	Voltage	Color temperature
ZL1N LED striplight	L24 24"	1500LM 1,500 lumens <sup>2</sup>	FST Snap on frosted, diffuse	MVOLT 120-277V	30K 3000 K
		2500LM 2,500 lumens <sup>2</sup>	L/LENS No diffuser	120 120V	35K 3500 K
		3500LM 3,500 lumens	SBL Straight blade louver	208 208V	40K 4000 K
	L46 46"	3000LM 3,000 lumens		240 240V	50K 5000 K
TZL1N LED striplight	L48 48"	5000LM 5,000 lumens		277 277V	
		7000LM 7,000 lumens		347 347V <sup>3</sup>	
				480 480V <sup>3</sup>	
	L92 92"	6000LM 6,000 lumens			
	L96 96"	10000LM 10,000 lumens			
		14000LM 14,000 lumens			

Color rendering index	Options	Paint finish
80CRI 80 CRI	PLR Plug-in wiring <sup>4</sup>	WH White
90CRI 90 CRI	PLR1LVG Plug-in wiring-low voltage	GALV Galvanized
	E7W Emergency battery pack <sup>3,5</sup>	MB Matte black
	OUTEND Cord set to exit endplate of fixture	SKGY Smoke gray
	Cord sets: <sup>6</sup>	
	CS1W Straight plug, 120V	
	CS3W Twist-lock, 120V	
	CS7W Straight plug, 277V	
	CS11W Twist-lock, 277V	
	CS25W Twist-lock, 347V	
	CS97W Twist-lock, 480V	
	CS93W 600V SE00W white cord, no plug (no voltage required)	

Accessories: Order as separate catalog number.			
HC36	Hanger chain, 36"	LSXR	Sensor Switch® LSXR occupancy sensor <sup>4</sup>
ZACVH	Aircraft cable 10' (one pair)	ZSPRG	For 15/16" T-grid only
ZLANGBKT	Luma-tilt™ angle bracket for shelf or ledge mounting only	WGZ24	24" wireguard, white
NPP16D	nLight® switching/dimming module	WGZ48	48" wireguard, white <sup>7</sup>

## Notes

- 1 See Operational Data on page 2 for actual lumens.
- 2 Not available with 0-10V dimming option.
- 3 Not available with L24, 24" fixture. 347V and 480V utilize a step-down transformer.
- 4 See ordering information on page 4.
- 5 Must specify voltage. 120, 208, 240 or 277V.
- 6 Cordsets exit back of fixture unless OUTEND option is specified.
- 7 Order 2 for tandem double length fixtures (TZL1N).

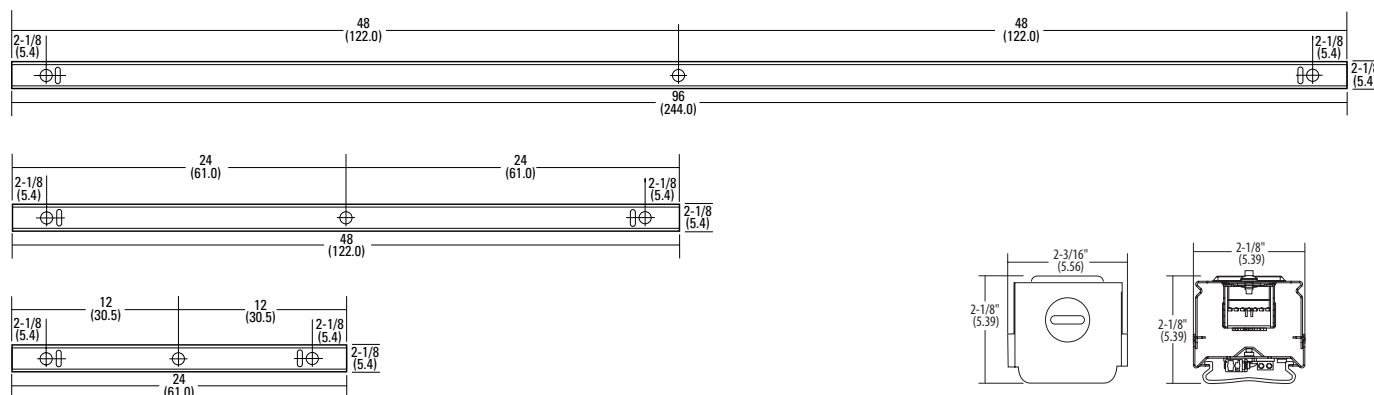
# ZL1N LED Striplight

OPERATIONAL DATA								
	Nominal lumen package	Length (inches)	Delivered lumens 3000 K CCT @ 77°F (25°C) ambient temperature	Delivered lumens 3500 K CCT @ 77°F (25°C) ambient temperature	Delivered lumens 4000 K CCT @ 77°F (25°C) ambient temperature	Delivered lumens 5000 K CCT @ 77°F (25°C) ambient temperature	Wattage @120V	Comparable light source
Lensed	1,500LM	24	1,753	1,777	1,806	1,890	18W	1-lamp 17W T8
	2,500LM	24	2,365	2,413	2,478	2,500	22W	1-lamp 17W T8
	3,500LM	24	3,716	3,792	3,895	3,928	39W	1-lamp 32W T8, 1-lamp 54W T5HO, 50W HID
	3,000LM	46 or 48	3,302	3,381	3,438	3,596	33W	1-lamp 32W T8, 1-lamp 54W T5HO, 50W HID
	5,000LM	46 or 48	4,630	4,725	4,853	4,894	42W	2-lamp 32W T8, 1-lamp 54W T5HO, 70W HID
	7,000LM	46 or 48	6,535	6,668	6,849	6,907	67W	3-lamp 32W T8, 2-lamp 54W T5HO, 100W HID
	6,000LM	92 or 96	6,560	6,717	6,830	7,144	60W	3-lamp 32W T8, 2-lamp 54W T5HO, 100W HID
	10,000LM	92 or 96	9,230	9,418	9,673	9,756	83W	4-lamp 32W T8, 2-lamp 54W T5HO, 100W HID
	14,000LM	92 or 96	13,177	13,446	13,810	13,923	134W	4-lamp 32W T8, 3-lamp 54W T5HO, 150W HID
Unlensed	1,500LM	24	1,883	1,928	1,960	2,051	18W	1-lamp 17W T8
	2,500LM	24	2,566	2,618	2,689	2,712	22W	1-lamp 17W T8
	3,500LM	24	4,032	4,114	4,226	4,262	39W	1-lamp 32W T8, 1-lamp 54W T5HO, 50W HID
	3,000LM	46 or 48	3,582	3,668	3,730	3,901	33W	1-lamp 32W T8, 1-lamp 54W T5HO, 50W HID
	5,000LM	46 or 48	5,024	5,126	5,265	5,310	42W	2-lamp 32W T8, 1-lamp 54W T5HO, 70W HID
	7,000LM	46 or 48	7,090	7,235	7,431	7,494	67W	3-lamp 32W T8, 2-lamp 54W T5HO, 100W HID
	6,000LM	92 or 96	7,118	7,288	7,410	7,751	60W	3-lamp 32W T8, 2-lamp 54W T5HO, 100W HID
	10,000LM	92 or 96	10,015	10,218	10,495	10,585	83W	4-lamp 32W T8, 2-lamp 54W T5HO, 100W HID
	14,000LM	92 or 96	14,297	14,588	14,984	15,112	134W	4-lamp 32W T8, 3-lamp 54W T5HO, 150W HID

## DIMENSIONS

All dimensions are shown in inches (centimeters) unless otherwise noted.  
Specifications subject to change without notice.

PALLET DIMENSIONS			
Length	Approximate weight	Fixtures per pallet	Approximate pallet dimensions (L x W x H)
L24	7 lbs.	408	46" X 51" X 32 11/16"
L46	11 lbs.	176	46" X 51" X 32 1/16"
L48	12 lbs.	176	46" X 51" X 31 3/8"
L92	22 lbs.	176	46" X 98 1/2" X 31 1/16"
L96	24 lbs.	176	46" X 98 1/2" X 31 1/16"



## PHOTOMETRICS

Please see [www.lithonia.com](http://www.lithonia.com).

## PRODUCT INFORMATION

Advanced plug-in system with three-circuit capability. Available on industrial and strip products and a variety of architectural products mounted in continuous rows. 1, 2, 3 and 4-lamp fixtures. PLR22 (2-circuit) and PLR33 (3-circuit) crossover harness switches hot circuit serving next fixture in row. Reduces fixture types on job for alternating circuit applications (see example below.)

Easy one-step installation, saves up to 35% on labor costs. Expanded switching flexibility helps save energy. Rows can be 50% longer with two-circuit systems. Polarized, lock-together nylon connectors prevent miswiring in the field. #12 THHN conductor, rated 600V, 90°C. White neutral wire included. Grounding accomplished by fixture in-row connectors.

CSA certified systems available with up to 2 circuits. G ground required.

Note: Specifications subject to change without notice.



# PLR

Advanced 3-Circuit Plug-In

### ORDERING INFORMATION

Lead times will vary depending on options selected. Consult with your sales representative.

Series	Number of hot wires	Branch circuits	Dimming	Ground
PLR	(blank) Not required for 22 or 33	Circuits to which ballast is connected	LV Low-voltage dimming	(blank) No ground in PLR
PLR22	1 Black	(blank) Not required for 22 or 33		G Ground. Maximum 2 circuits
PLR33	2 Black and red	A Black wire		
	3 Black, red and blue			

### Typical Applications

- Multiple-circuit and single-circuit for longer continuous rows
- Multiple-circuit with alternating fixtures on separate circuits, 2-circuit (PLR 22) and 3-circuit (PLR 33)
- Multiple circuit with night-lights located along row as desired

TYPICAL APPLICATIONS										
PLR 3 C	PLR 3 C	PLR 3 C	PLR 3 C	PLR 2 B	PLR 2 B	PLR 2 B	PLR 2 B	PLR 1	PLR 1	PLR 1
(All PLR22)										
Circuit A	Circuit B	Circuit A	Circuit B	Circuit A	Circuit B	Circuit A	Circuit B	Circuit A	Circuit B	Circuit A
(All PLR33)										
Circuit A	Circuit B	Circuit C	Circuit A	Circuit B	Circuit C	Circuit A	Circuit B	Circuit C	Circuit A	Circuit B
PLR 3 A	PLR 3 A	PLR 3 A	PLR 3 C	PLR 3 B	PLR 3 B	PLR 3 B	PLR 3 C	PLR 3 A	PLR 3 A	PLR 3 A

## PRODUCT INFORMATION

A standard occupancy time delay is also present to ensure lights turn off (once minimum on timer has also elapsed) if no occupancy is detected.

This timer is factory set at 10 minutes to promote energy savings, but is adjustable between 30 seconds and 30 minutes. These adjustments may be done through the unit's push-button.

### FEATURES

- Four interchangeable lenses - high mount 360°, low mount 360°, high mount aisleway, and small motion 360°.
- Integrated mounting bracket drops lens down 3" from chase nipple - no bracket accessory required.
- 100% digital PIR detection - provides excellent RF immunity

Note: Specifications subject to change without notice.



Passive Infrared Indoor Occupancy Sensor

# LSXR

Single Relay



### ORDERING INFORMATION

Lead times will vary depending on options selected. Consult with your sales representative.

Example: LSXR 10 ADC HVOLT 30M

LSXR		Lens option				Dimming/photocell	
Series	Passive Infrared Indoor Occupancy Sensor	(blank)	No lens	610	High and low mount 360°	(blank)	None
		6	High mount, 360°	650	High mount 360° and aisleway	HL	High/low occupancy operation
		10	Low mount, 360°	3PK	High and low mount 360° and aisleway	P	Switching photocell (on/off)
		50	High mount aisleway	4PK	All lenses	ADC	Dimming and switching photocell
		9	Small motion, 360°			ANL	Dimming and switching photocell with high/low occupancy operation

Voltage	Max dim level	Min dim level	Lead length	Temp humidity	Default time delay
(blank) 120-277 VAC (MVOLT)	(blank) 10 VDC	(blank) Minimum dimming level of ballast	(blank) 14"	(blank) None	(blank) 10 minutes (with minimum 15 minutes on time)
HVOLT 347-480 VAC	9H 9 VDC	1V 1 VDC	42L 42"	LT Low temperature	5M 5 minutes (LED only)
	8H 8 VDC	2V 2 VDC			15M 15 minutes
	7H 7 VDC	3V 3 VDC			20M 20 minutes
		4V 4 VDC			30M 30 minutes
		5V 5 VDC			
		6V 6 VDC			

For additional information see [www.lithonia.com](http://www.lithonia.com)

## OPTIONS AND ACCESSORIES

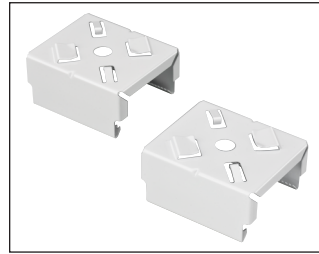
The Z Series fixture offers numerous options for almost every electrical and optical component, including a long list of field-installable accessories.



### HANGER CHAIN

36" chain with Y hanger.

Order as:  
HC36



### Z SPRING HANGER

Snap 'n' lock design requires no fasteners and can be used on T-grid ceiling or universal mounting systems.

Order as:  
ZSPRG



### ZACVH HANGER

10' Aircraft cable with Y hanger.

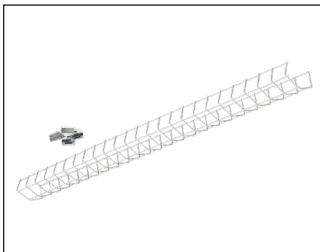
Order as:  
ZACVH



### ANGLE MOUNTING BRACKET

Luma-tilt™ angle bracket ships as a pair

Order as:  
ZLANGBKT



### WIRE GUARD

Order as:  
WGZ24  
WGZ48

## FEATURES & SPECIFICATIONS

**INTENDED USE** — Built on the compact, low-profile Z strip channel, this LED strip offers long maintenance-free life, several color temperatures, lumen outputs and lengths. Ideal for new construction and retrofit applications in T5 and T8 lengths. Ideal for uplight and downlight in commercial, retail, manufacturing, warehouse, cove and display applications. **Certain airborne contaminants can diminish the integrity of acrylic and/or polycarbonate.** [Click here for Acrylic-Polycarbonate Compatibility table for suitable uses.](#)

**CONSTRUCTION** — Compact-design channel and cover are formed from code-gauge cold-rolled steel. Easy to install row aligner included for continuous row mounting.

Finish: Paint options include high-gloss, baked white enamel (WH), galvanized (GALV), matte black (MB) and smoke gray (SKGY). Five-stage iron phosphate pre-treatment ensures superior paint adhesion and rust resistance.

**OPTICS** — Standard diffuse snap on/snap off lens eliminates pixels, improves uniformity and minimizes glare. L/LENS option available.

**ELECTRICAL** — Utilizes high-output LEDs integrated on a two-layer circuit board, ensuring cool-running operation. Optional internal pluggable wiring harness for reduced labor cost in row mounting applications. (See PLR ordering information on page 3.) Electronic LED driver is rated for 75 input watts maximum (see Operational Data on page two for actual wattage consumption), **multi-volt input and 0-10V dimming standard.** This fixture is designed to withstand a maximum line surge of 1.5kV at 0.75kA combination wave for indoor locations, for applications requiring higher level of protection additional surge protection must be provided.

LEDs provide nominal 80 CRI at 3000 K, 3500 K, 4000 K, or 5000 K.

Lumen output up to 2,000 lumens per foot. In 86°F (30°C) ambient environments. Luminaire should be installed in applications where ambient temperatures do not exceed 86°F (30°C).

**INSTALLATION** — Tool-less channel cover for easy installation.

Fixture may be surface mounted (with or without ZSPRG hanger), pendant or stem mounted with appropriate mounting options. Three-point aligner locks in place for easy continuous row mounting.

**LISTINGS** — CSA certified to US and Canadian safety standards. For use in damp locations between -4°F (-20°C) and 86°F (30°C).

DesignLights Consortium® (DLC) qualified product. Not all versions of this product may be DLC qualified. Please check the DLC Qualified Products List at [www.designlights.org](http://www.designlights.org) to confirm which versions are qualified.

**WARRANTY** — 5-year limited warranty. Complete warranty terms located at [www.acuitybrands.com/CustomerResources/Terms\\_and\\_conditions.aspx](http://www.acuitybrands.com/CustomerResources/Terms_and_conditions.aspx)

**Note:** Actual performance may differ as a result of end-user environment and application.

All values are design or typical values, measured under laboratory conditions at 25 °C.

Specifications subject to change without notice.

Catalog Number
Notes
Type



LED Striplight

# ZL1N

24", 48" and 96" Lengths



L/Lens

Lensed

### Capable Luminaire

This item is an A+ capable luminaire, which has been designed and tested to provide consistent color appearance and out-of-the-box control compatibility with simple commissioning.

- All configurations of this luminaire meet the Acuity Brands' specification for chromatic consistency
- This luminaire is part of an A+ Certified solution for nLight® or XPoint™ Wireless control networks marked by a **shaded background**\*

To learn more about A+, visit [www.acuitybrands.com/aplus](http://www.acuitybrands.com/aplus).

\*See ordering tree for details

# ZL1N LED Striplight



A+ Capable options indicated by this color background.

## ORDERING INFORMATION

Lead times will vary depending on options selected. Consult with your sales representative.

**Example:** ZL1N L48 3000LM FST MVOLT 40K 80CRI WH

Series	Length	Nominal lumens <sup>1</sup>	Diffuser	Voltage	Color temperature
ZL1N LED striplight	L24 24"	1500LM 1,500 lumens <sup>2</sup>	FST Snap on frosted, diffuse	MVOLT 120-277V	30K 3000 K
		2500LM 2,500 lumens <sup>2</sup>	L/LENS No diffuser	120 120V	35K 3500 K
		3500LM 3,500 lumens	SBL Straight blade louver	208 208V	40K 4000 K
	L46 46" L48 48"	3000LM 3,000 lumens 5000LM 5,000 lumens 7000LM 7,000 lumens		240 240V 277 277V 347 347V <sup>3</sup> 480 480V <sup>3</sup>	50K 5000 K
TZL1N LED striplight	L92 92"	6000LM 6,000 lumens			
	L96 96"	10000LM 10,000 lumens 14000LM 14,000 lumens			

Color rendering index	Options	Paint finish
80CRI 80 CRI	PLR Plug-in wiring <sup>4</sup>	WH White
90CRI 90 CRI	PLR1LVG Plug-in wiring-low voltage	GALV Galvanized
	E7W Emergency battery pack <sup>3,5</sup>	MB Matte black
	OUTEND Cord set to exit endplate of fixture	SKGY Smoke gray
	Cord sets: <sup>6</sup>	
	CS1W Straight plug, 120V	
	CS3W Twist-lock, 120V	
	CS7W Straight plug, 277V	
	CS11W Twist-lock, 277V	
	CS25W Twist-lock, 347V	
	CS97W Twist-lock, 480V	
	CS93W 600V SE00W white cord, no plug (no voltage required)	

Accessories: Order as separate catalog number.			
HC36	Hanger chain, 36"	LSXR	Sensor Switch® LSXR occupancy sensor <sup>4</sup>
ZACVH	Aircraft cable 10' (one pair)	ZSPRG	For 15/16" T-grid only
ZLANGBKT	Luma-tilt™ angle bracket for shelf or ledge mounting only	WGZ24	24" wireguard, white
NPP16D	nLight® switching/dimming module	WGZ48	48" wireguard, white <sup>7</sup>

## Notes

- 1 See Operational Data on page 2 for actual lumens.
- 2 Not available with 0-10V dimming option.
- 3 Not available with L24, 24" fixture. 347V and 480V utilize a step-down transformer.
- 4 See ordering information on page 4.
- 5 Must specify voltage. 120, 208, 240 or 277V.
- 6 Cordsets exit back of fixture unless OUTEND option is specified.
- 7 Order 2 for tandem double length fixtures (TZL1N).

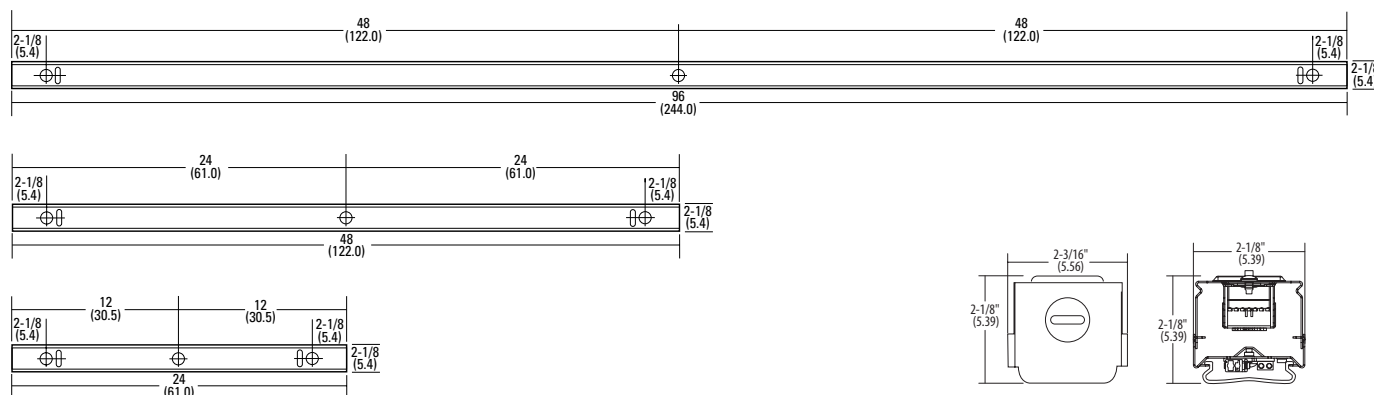
# ZL1N LED Striplight

OPERATIONAL DATA								
	Nominal lumen package	Length (inches)	Delivered lumens 3000 K CCT @ 77°F (25°C) ambient temperature	Delivered lumens 3500 K CCT @ 77°F (25°C) ambient temperature	Delivered lumens 4000 K CCT @ 77°F (25°C) ambient temperature	Delivered lumens 5000 K CCT @ 77°F (25°C) ambient temperature	Wattage @120V	Comparable light source
Lensed	1,500LM	24	1,753	1,777	1,806	1,890	18W	1-lamp 17W T8
	2,500LM	24	2,365	2,413	2,478	2,500	22W	1-lamp 17W T8
	3,500LM	24	3,716	3,792	3,895	3,928	39W	1-lamp 32W T8, 1-lamp 54W T5HO, 50W HID
	3,000LM	46 or 48	3,302	3,381	3,438	3,596	33W	1-lamp 32W T8, 1-lamp 54W T5HO, 50W HID
	5,000LM	46 or 48	4,630	4,725	4,853	4,894	42W	2-lamp 32W T8, 1-lamp 54W T5HO, 70W HID
	7,000LM	46 or 48	6,535	6,668	6,849	6,907	67W	3-lamp 32W T8, 2-lamp 54W T5HO, 100W HID
	6,000LM	92 or 96	6,560	6,717	6,830	7,144	60W	3-lamp 32W T8, 2-lamp 54W T5HO, 100W HID
	10,000LM	92 or 96	9,230	9,418	9,673	9,756	83W	4-lamp 32W T8, 2-lamp 54W T5HO, 100W HID
	14,000LM	92 or 96	13,177	13,446	13,810	13,923	134W	4-lamp 32W T8, 3-lamp 54W T5HO, 150W HID
Unlensed	1,500LM	24	1,883	1,928	1,960	2,051	18W	1-lamp 17W T8
	2,500LM	24	2,566	2,618	2,689	2,712	22W	1-lamp 17W T8
	3,500LM	24	4,032	4,114	4,226	4,262	39W	1-lamp 32W T8, 1-lamp 54W T5HO, 50W HID
	3,000LM	46 or 48	3,582	3,668	3,730	3,901	33W	1-lamp 32W T8, 1-lamp 54W T5HO, 50W HID
	5,000LM	46 or 48	5,024	5,126	5,265	5,310	42W	2-lamp 32W T8, 1-lamp 54W T5HO, 70W HID
	7,000LM	46 or 48	7,090	7,235	7,431	7,494	67W	3-lamp 32W T8, 2-lamp 54W T5HO, 100W HID
	6,000LM	92 or 96	7,118	7,288	7,410	7,751	60W	3-lamp 32W T8, 2-lamp 54W T5HO, 100W HID
	10,000LM	92 or 96	10,015	10,218	10,495	10,585	83W	4-lamp 32W T8, 2-lamp 54W T5HO, 100W HID
	14,000LM	92 or 96	14,297	14,588	14,984	15,112	134W	4-lamp 32W T8, 3-lamp 54W T5HO, 150W HID

## DIMENSIONS

All dimensions are shown in inches (centimeters) unless otherwise noted.  
Specifications subject to change without notice.

PALLET DIMENSIONS			
Length	Approximate weight	Fixtures per pallet	Approximate pallet dimensions (L x W x H)
L24	7 lbs.	408	46" X 51" X 32 11/16"
L46	11 lbs.	176	46" X 51" X 32 1/16"
L48	12 lbs.	176	46" X 51" X 31 3/8"
L92	22 lbs.	176	46" X 98 1/2" X 31 1/16"
L96	24 lbs.	176	46" X 98 1/2" X 31 1/16"



## PHOTOMETRICS

Please see [www.lithonia.com](http://www.lithonia.com).



## PRODUCT INFORMATION

Advanced plug-in system with three-circuit capability. Available on industrial and strip products and a variety of architectural products mounted in continuous rows. 1, 2, 3 and 4-lamp fixtures. PLR22 (2-circuit) and PLR33 (3-circuit) crossover harness switches hot circuit serving next fixture in row. Reduces fixture types on job for alternating circuit applications (see example below.)

Easy one-step installation, saves up to 35% on labor costs. Expanded switching flexibility helps save energy. Rows can be 50% longer with two-circuit systems. Polarized, lock-together nylon connectors prevent miswiring in the field. #12 THHN conductor, rated 600V, 90°C. White neutral wire included. Grounding accomplished by fixture in-row connectors.

CSA certified systems available with up to 2 circuits. G ground required.

Note: Specifications subject to change without notice.



# PLR

Advanced 3-Circuit Plug-In

### ORDERING INFORMATION

Lead times will vary depending on options selected. Consult with your sales representative.

Series	Number of hot wires	Branch circuits	Dimming	Ground
PLR	(blank) Not required for 22 or 33	Circuits to which ballast is connected	LV Low-voltage dimming	(blank) No ground in PLR
PLR22	1 Black	(blank) Not required for 22 or 33		G Ground. Maximum 2 circuits
PLR33	2 Black and red	A Black wire		
	3 Black, red and blue			

### Typical Applications

- Multiple-circuit and single-circuit for longer continuous rows
- Multiple-circuit with alternating fixtures on separate circuits, 2-circuit (PLR 22) and 3-circuit (PLR 33)
- Multiple circuit with night-lights located along row as desired

TYPICAL APPLICATIONS										
PLR 3 C	PLR 3 C	PLR 3 C	PLR 3 C	PLR 2 B	PLR 2 B	PLR 2 B	PLR 2 B	PLR 1	PLR 1	PLR 1
(All PLR22)										
Circuit A	Circuit B	Circuit A	Circuit B	Circuit A	Circuit B	Circuit A	Circuit B	Circuit A	Circuit B	Circuit A
(All PLR33)										
Circuit A	Circuit B	Circuit C	Circuit A	Circuit B	Circuit C	Circuit A	Circuit B	Circuit C	Circuit A	Circuit B
PLR 3 A	PLR 3 A	PLR 3 A	PLR 3 C	PLR 3 B	PLR 3 B	PLR 3 B	PLR 3 C	PLR 3 A	PLR 3 A	PLR 3 A

## PRODUCT INFORMATION

A standard occupancy time delay is also present to ensure lights turn off (once minimum on timer has also elapsed) if no occupancy is detected.

This timer is factory set at 10 minutes to promote energy savings, but is adjustable between 30 seconds and 30 minutes. These adjustments may be done through the unit's push-button.

### FEATURES

- Four interchangeable lenses - high mount 360°, low mount 360°, high mount aisleway, and small motion 360°.
- Integrated mounting bracket drops lens down 3" from chase nipple - no bracket accessory required.
- 100% digital PIR detection - provides excellent RF immunity

Note: Specifications subject to change without notice.



Passive Infrared Indoor Occupancy Sensor

# LSXR

Single Relay

AcuityControls  
Sensor Switch

### ORDERING INFORMATION

Lead times will vary depending on options selected. Consult with your sales representative.

Example: LSXR 10 ADC HVOLT 30M

LSXR		Lens option				Dimming/photocell	
Series	Passive Infrared Indoor Occupancy Sensor	(blank)	No lens	610	High and low mount 360°	(blank)	None
		6	High mount, 360°	650	High mount 360° and aisleway	HL	High/low occupancy operation
		10	Low mount, 360°	3PK	High and low mount 360° and aisleway	P	Switching photocell (on/off)
		50	High mount aisleway	4PK	All lenses	ADC	Dimming and switching photocell
		9	Small motion, 360°			ANL	Dimming and switching photocell with high/low occupancy operation

Voltage	Max dim level	Min dim level	Lead length	Temp humidity	Default time delay
(blank) 120-277 VAC (MVOLT)	(blank) 10 VDC	(blank) Minimum dimming level of ballast	(blank) 14"	(blank) None	(blank) 10 minutes (with minimum 15 minutes on time)
HVOLT 347-480 VAC	9H 9 VDC	1V 1 VDC	42L 42"	LT Low temperature	5M 5 minutes (LED only)
	8H 8 VDC	2V 2 VDC			15M 15 minutes
	7H 7 VDC	3V 3 VDC			20M 20 minutes
		4V 4 VDC			30M 30 minutes
		5V 5 VDC			
		6V 6 VDC			

For additional information see [www.lithonia.com](http://www.lithonia.com)

## OPTIONS AND ACCESSORIES

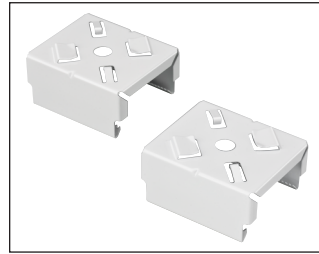
The Z Series fixture offers numerous options for almost every electrical and optical component, including a long list of field-installable accessories.



### HANGER CHAIN

36" chain with Y hanger.

Order as:  
HC36



### Z SPRING HANGER

Snap 'n' lock design requires no fasteners and can be used on T-grid ceiling or universal mounting systems.

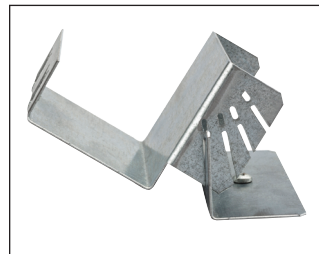
Order as:  
ZSPRG



### ZACVH HANGER

10' Aircraft cable with Y hanger.

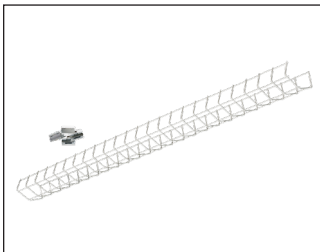
Order as:  
ZACVH



### ANGLE MOUNTING BRACKET

Luma-tilt™ angle bracket ships as a pair

Order as:  
ZLANGBKT



### WIRE GUARD

Order as:  
WGZ24  
WGZ48