

CSA, ULI

RIGID PVC CONDUIT FITTINGS - KRALOY

ISSUE DATE:

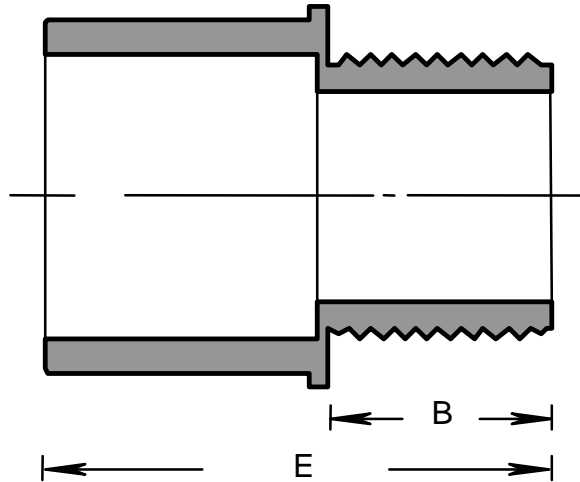
DATE D'EMISSION: 2007 08 30

TERMINAL ADAPTER

SUPERCEDES:

REPLACE: 2004 05 15

5



PRODUCT CODE	PART NUMBER	NOMINAL SIZE		B		E	
		(in)	(mm)	(in)	(mm)	(in)	(mm)
078084	TA05	1/2	16	0.550	14	1.305	33
078085	TA07	3/4	21	0.565	14	1.435	36
078086	TA10	1	27	0.800	20	1.775	45
078087	TA12	1 1/4	35	0.800	20	1.855	47
078088	TA15	1 1/2	41	0.800	20	1.980	50
078089	TA20	2	53	0.810	21	2.070	53
078090	TA25	2 1/2	63	0.820	21	2.480	63
078091	TA30	3	78	0.765	19	2.580	66
078092	TA35	3 1/2	91	0.920	23	2.815	72
078093	TA40	4	103	0.870	22	2.870	73
078094	TA50	5	129	1.390	35	3.250	84
078095	TA60	6	155	1.080	27	3.260	84
178026*	TA05	1/2	16	0.550	14	1.305	33
178027*	TA07	3/4	21	0.565	14	1.435	36
178028*	TA10	1	27	0.800	20	1.775	45
178029*	TA12	1 1/4	35	0.800	20	1.855	47
178030*	TA15	1 1/2	41	0.800	20	1.980	50
178031*	TA20	2	53	0.810	21	2.070	53
178146*	TA25	2 1/2	63	0.820	21	2.480	63
178147*	TA30	3	76	0.765	19	2.580	66

\* Bulk packed for 075

CSA, ULI

RIGID PVC CONDUIT FITTINGS - KRALOY

ISSUE DATE:

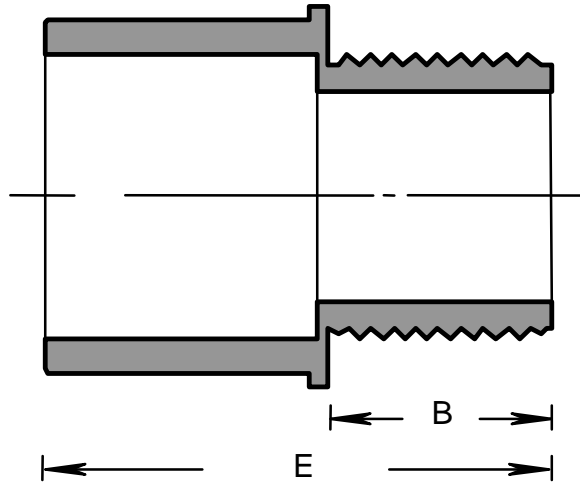
DATE D'EMISSION: 2007 08 30

TERMINAL ADAPTER

SUPERCEDES:

REPLACE: 2004 05 15

5



PRODUCT CODE	PART NUMBER	NOMINAL SIZE		B		E	
		(in)	(mm)	(in)	(mm)	(in)	(mm)
078084	TA05	1/2	16	0.550	14	1.305	33
078085	TA07	3/4	21	0.565	14	1.435	36
078086	TA10	1	27	0.800	20	1.775	45
078087	TA12	1 1/4	35	0.800	20	1.855	47
078088	TA15	1 1/2	41	0.800	20	1.980	50
078089	TA20	2	53	0.810	21	2.070	53
078090	TA25	2 1/2	63	0.820	21	2.480	63
078091	TA30	3	78	0.765	19	2.580	66
078092	TA35	3 1/2	91	0.920	23	2.815	72
078093	TA40	4	103	0.870	22	2.870	73
078094	TA50	5	129	1.390	35	3.250	84
078095	TA60	6	155	1.080	27	3.260	84
178026*	TA05	1/2	16	0.550	14	1.305	33
178027*	TA07	3/4	21	0.565	14	1.435	36
178028*	TA10	1	27	0.800	20	1.775	45
178029*	TA12	1 1/4	35	0.800	20	1.855	47
178030*	TA15	1 1/2	41	0.800	20	1.980	50
178031*	TA20	2	53	0.810	21	2.070	53
178146*	TA25	2 1/2	63	0.820	21	2.480	63
178147*	TA30	3	76	0.765	19	2.580	66

\* Bulk packed for 075