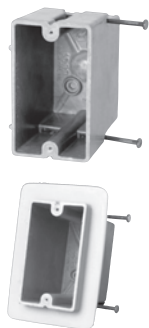


# Single Gang:

## Residential Switch or Receptacle Box

### Series Nail-On



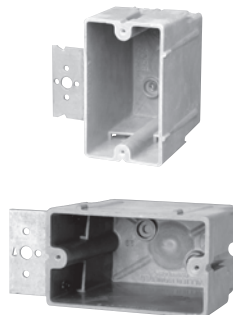
Cu. In. Volume	Catalog Number	Component Description	D	W	H	UPC# 85339	Std. Pkg. Qty.	Std. Pkg. Wt. (lb.)
18.0	1096-N	Internal mid-nails	3	2-1/4	3-3/4	24414	100	31
20.5	1098-N	Angled mid-nails	3-1/4	2-1/4	3-3/4	25001	100	35
22.5	1099-N* (Top photo)	Angled mid-nails	3-9/16	2-1/4	3-3/4	26000	100	37
22.5	1099-NV* (Btm photo)	Angled mid-nails, energy efficient vapor seal	3-9/16	2-1/4	3-3/4	26007	48	20

### Series Steel Stud Screws



Cu. In. Volume	Catalog Number	Component Description	D	W	H	UPC# 85339	Std. Pkg. Qty.	Std. Pkg. Wt. (lb.)
18.0	1096-SS	Steel stud screws for use with non-load bearing studs 22 gauge or lighter	3	2-1/4	3-3/4	24421	100	32
20.5	1098-SS	Steel stud screws for use with non-load bearing studs 22 gauge or lighter	3-1/4	2-1/4	3-3/4	25009	100	36
22.5	1099-SS*	Steel stud screws for use with non-load bearing studs 22 gauge or lighter	3-9/16	2-1/4	3-3/4	26001	100	38

### Series "Z" Hanger



Cu. In. Volume	Catalog Number	Component Description	D	W	H	UPC# 85339	Std. Pkg. Qty.	Std. Pkg. Wt. (lb.)
18.0	1096-Z2	1/4" offset, "Z" hanger	3	2-1/4	3-3/4	24402	50	24
18.0	1096-Z4	1/2" offset, "Z" hanger	3	2-1/4	3-3/4	24406	50	27
20.5	1098-Z2* (Top photo)	1/4" offset, "Z" hanger	3-1/4	2-1/4	3-3/4	25030	50	24
20.5	1098-Z4	1/2" offset, "Z" hanger	3-1/4	2-1/4	3-3/4	25040	50	27
20.5	1098-Z4H* (Btm photo)	1/2" offset, <b>horizontal mount</b> "Z" hanger	3-1/4	2-1/4	3-3/4	25025	50	27
22.5	1099-Z4	1/2" offset, "Z" hanger	3-9/16	2-1/4	3-3/4	26003	50	28

### 9303-H



Cu. In. Volume	Catalog Number	Component Description	D	W	H	UPC# 85339	Std. Pkg. Qty.	Std. Pkg. Wt. (lb.)
6.0	9303-H	Side mount hanger, 1/4" offset, not UL® listed	1-1/8	2-1/4	3-5/8	10021	100	20

### 9327-N



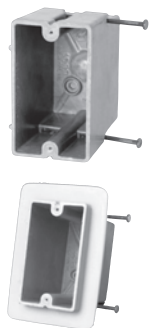
Cu. In. Volume	Catalog Number	Component Description	D	W	H	UPC# 85339	Std. Pkg. Qty.	Std. Pkg. Wt. (lb.)
20.5	9327-N	Back nails	3-1/4	2-3/8	3-1/4	10195	50	21

\* Indicates model shown • See page 7 for Attachment Coding descriptions

# Single Gang:

## Residential Switch or Receptacle Box

### Series Nail-On



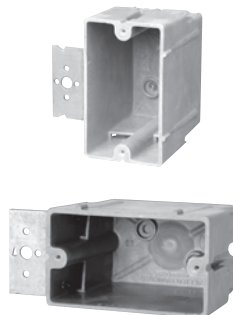
Cu. In. Volume	Catalog Number	Component Description	D	W	H	UPC# 85339	Std. Pkg. Qty.	Std. Pkg. Wt. (lb.)
18.0	1096-N	Internal mid-nails	3	2-1/4	3-3/4	24414	100	31
20.5	1098-N	Angled mid-nails	3-1/4	2-1/4	3-3/4	25001	100	35
22.5	1099-N* (Top photo)	Angled mid-nails	3-9/16	2-1/4	3-3/4	26000	100	37
22.5	1099-NV* (Btm photo)	Angled mid-nails, energy efficient vapor seal	3-9/16	2-1/4	3-3/4	26007	48	20

### Series Steel Stud Screws



Cu. In. Volume	Catalog Number	Component Description	D	W	H	UPC# 85339	Std. Pkg. Qty.	Std. Pkg. Wt. (lb.)
18.0	1096-SS	Steel stud screws for use with non-load bearing studs 22 gauge or lighter	3	2-1/4	3-3/4	24421	100	32
20.5	1098-SS	Steel stud screws for use with non-load bearing studs 22 gauge or lighter	3-1/4	2-1/4	3-3/4	25009	100	36
22.5	1099-SS*	Steel stud screws for use with non-load bearing studs 22 gauge or lighter	3-9/16	2-1/4	3-3/4	26001	100	38

### Series "Z" Hanger



Cu. In. Volume	Catalog Number	Component Description	D	W	H	UPC# 85339	Std. Pkg. Qty.	Std. Pkg. Wt. (lb.)
18.0	1096-Z2	1/4" offset, "Z" hanger	3	2-1/4	3-3/4	24402	50	24
18.0	1096-Z4	1/2" offset, "Z" hanger	3	2-1/4	3-3/4	24406	50	27
20.5	1098-Z2* (Top photo)	1/4" offset, "Z" hanger	3-1/4	2-1/4	3-3/4	25030	50	24
20.5	1098-Z4	1/2" offset, "Z" hanger	3-1/4	2-1/4	3-3/4	25040	50	27
20.5	1098-Z4H* (Btm photo)	1/2" offset, <b>horizontal mount</b> "Z" hanger	3-1/4	2-1/4	3-3/4	25025	50	27
22.5	1099-Z4	1/2" offset, "Z" hanger	3-9/16	2-1/4	3-3/4	26003	50	28

### 9303-H



Cu. In. Volume	Catalog Number	Component Description	D	W	H	UPC# 85339	Std. Pkg. Qty.	Std. Pkg. Wt. (lb.)
6.0	9303-H	Side mount hanger, 1/4" offset, not UL® listed	1-1/8	2-1/4	3-5/8	10021	100	20

### 9327-N



Cu. In. Volume	Catalog Number	Component Description	D	W	H	UPC# 85339	Std. Pkg. Qty.	Std. Pkg. Wt. (lb.)
20.5	9327-N	Back nails	3-1/4	2-3/8	3-1/4	10195	50	21

\* Indicates model shown • See page 7 for Attachment Coding descriptions