



# ELLIOTT ELECTRIC SUPPLY

We Deliver...Lower Cost, Quality Products, & Personal Service

3804 South Street  
75964-7263, TX Nacogdoches  
Phone: 936-569-7941  
Fax: 936-560-4685



## 1185 4" X 3-1/2" Reducing Bushing *Bridgeport Fittings*

Catalog Number	1185
Manufacturer	Bridgeport Fittings
Description	
Weight per unit	1.3 (lbs/each)
Product Category	Rigid Conduit Fittings - Steel

### Features

Material	MALLEABLE IRON
Trade Size	4 - 3-1/2 IN

### Material, Color, and Finish

Finish	Zinc electro-plate
--------	--------------------

### Dimensions and Weight

Size	4 - 3-1/2 IN
------	--------------

### Descriptions

Description	4" X 3-1/2" REDUCING BUSHING
Product Type	4" 3 1/2" Red. Bushing
Special Features	For Rigid and IMC Conduit

### Manufacturer Information

Brand	Bridgeport
GTIN	00781747011855
Manufacturers Part Number	1185
UPC	781747011855

### Taxonomies, Classifications, and Categories

Category Description	Locknuts, Bushings, Re-Bushings, Re-Washers, Threaded Plugs, Knockout Plugs
Type	BUSHING

### Packaging

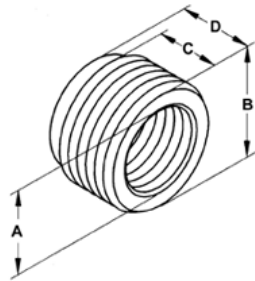
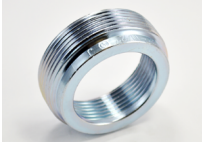
Carton	1
Package	5
Weight Per each	1.34

### Uses, Certifications, and Standards

Application	Used to reduce the size of internal female threads. 1/2" thru 2" steel, 2 1/2" thru 4" malleable iron.
standard	CSA

## Malleable Iron

### Images



### Application

Used to reduce the size of internal female threads. 1/2" thru 2" steel, 2 1/2" thru 4" malleable iron.

### Product Information

Material: Malleable Iron  
Finish: Zinc electro-plate

### Certifications & Codes:

UNSPSC: 39121312

[Download Photo Image](#)

[Download Dimensional Image](#)

Dimension A in Inches: 3-5/16  
Dimension B in Inches: 4-1/2  
Dimension C in Inches: 1-1/8  
Dimension D in Inches: 1-3/8

**Catalog ID:** 1185

**UPC Number:** 781747011855

**Description:** Bushing, Reducing, Malleable Iron, Size 4 - 3 1/2 Inch

**Application:** Used to reduce the size of internal female threads. 1/2" thru 2" steel, 2 1/2" thru 4" malleable iron.

**Trade Size:** 4" - 3 1/2"

**Std Pkg Qty:** 5

**Unit Qty:** Bulk