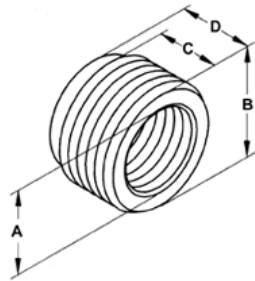
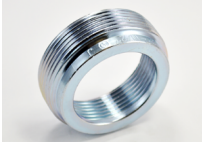


Malleable Iron

Images



Application

Used to reduce the size of internal female threads. 1/2" thru 2" steel, 2 1/2" thru 4" malleable iron.

Product Information

Material: Malleable Iron
Finish: Zinc electro-plate

Certifications & Codes:

UNSPSC: 39121312

[Download Photo Image](#)

[Download Dimensional Image](#)

Dimension A in Inches: 3-5/16
Dimension B in Inches: 4-1/2
Dimension C in Inches: 1-1/8
Dimension D in Inches: 1-3/8

Catalog ID: 1185

UPC Number: 781747011855

Description: Bushing, Reducing, Malleable Iron, Size 4 - 3 1/2 Inch

Application: Used to reduce the size of internal female threads. 1/2" thru 2" steel, 2 1/2" thru 4" malleable iron.

Trade Size: 4" - 3 1/2"

Std Pkg Qty: 5

Unit Qty: Bulk