

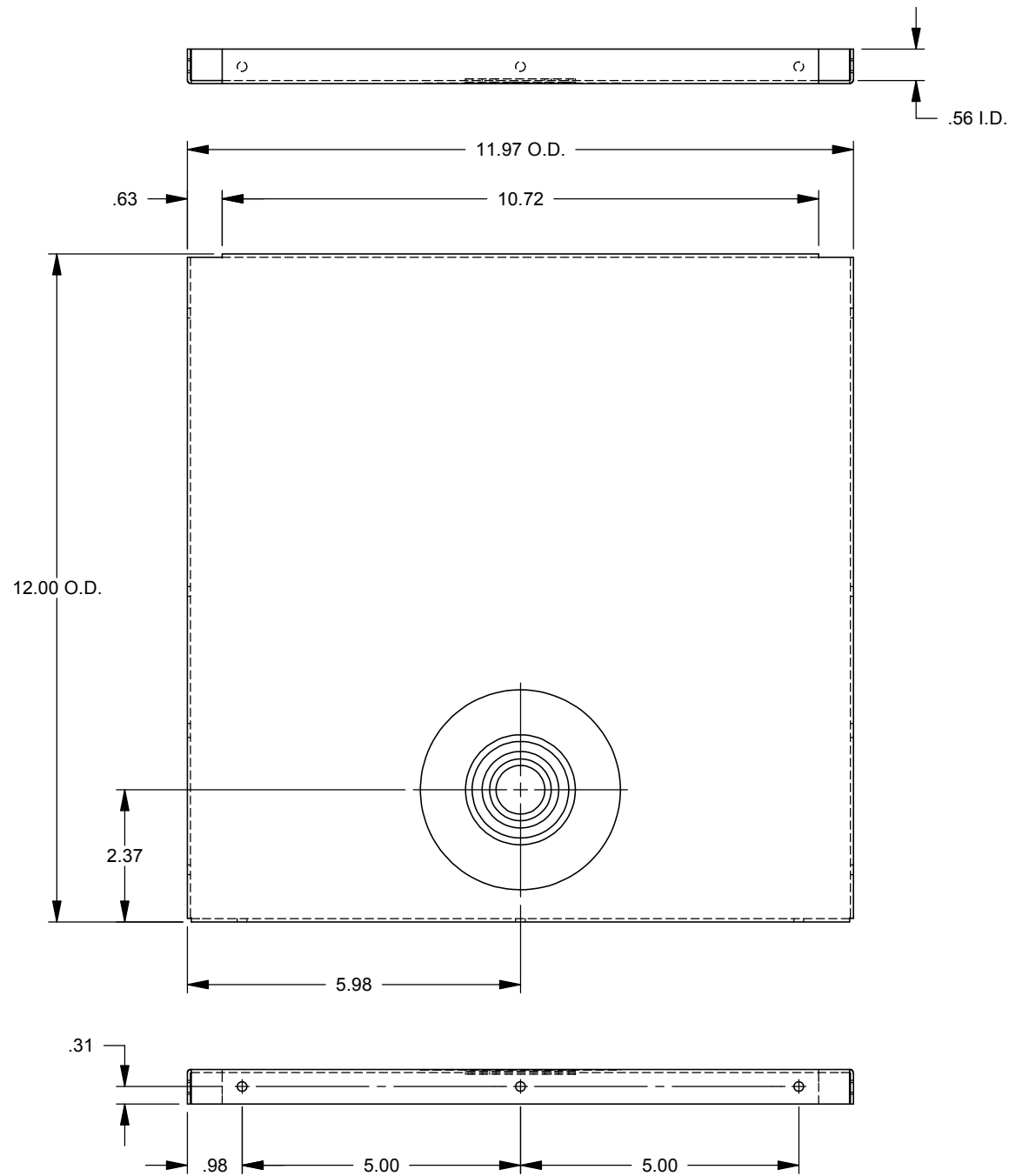


Catalog Number: 1212GE-NK
Item Description: WIREWAY ACCESSORY
UPC Code: 784572101623

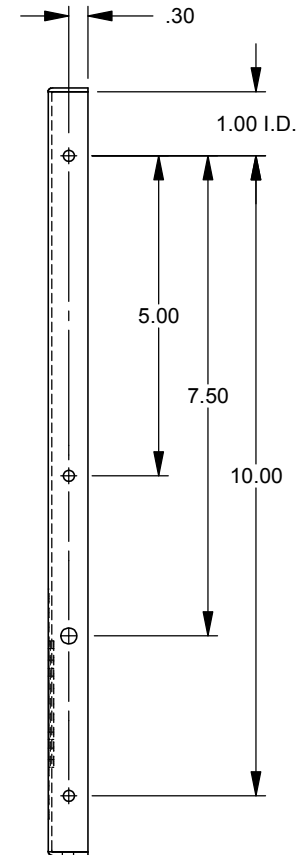
Brand Name: Milbank
Type: Wireway End
Application: Wireway Accessory
Standard: UL Listed, Type 1
Cover Type: Screw Cover
Enclosure: Indoor Enclosure
Nominal Cross Section: 12x12
Material: Steel with Powder Coat Finish
Finish: ANSI 61 Gray
Knockouts: False



Utility requirements may vary. Always consult the serving utility for their requirements prior to ordering or installing this equipment. This product must always be installed by a licensed electrician. Installation of this equipment may require local electrical inspector approval.



PART NO.	LPN	K.O. QTY	MAT'L.
1103441	811140-SO	1	GALV
1011942	811140-NK	N/A	GALV
1002272	811140-SUNK	N/A	CRS
1002270	811140-SU	1	CRS


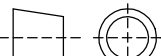


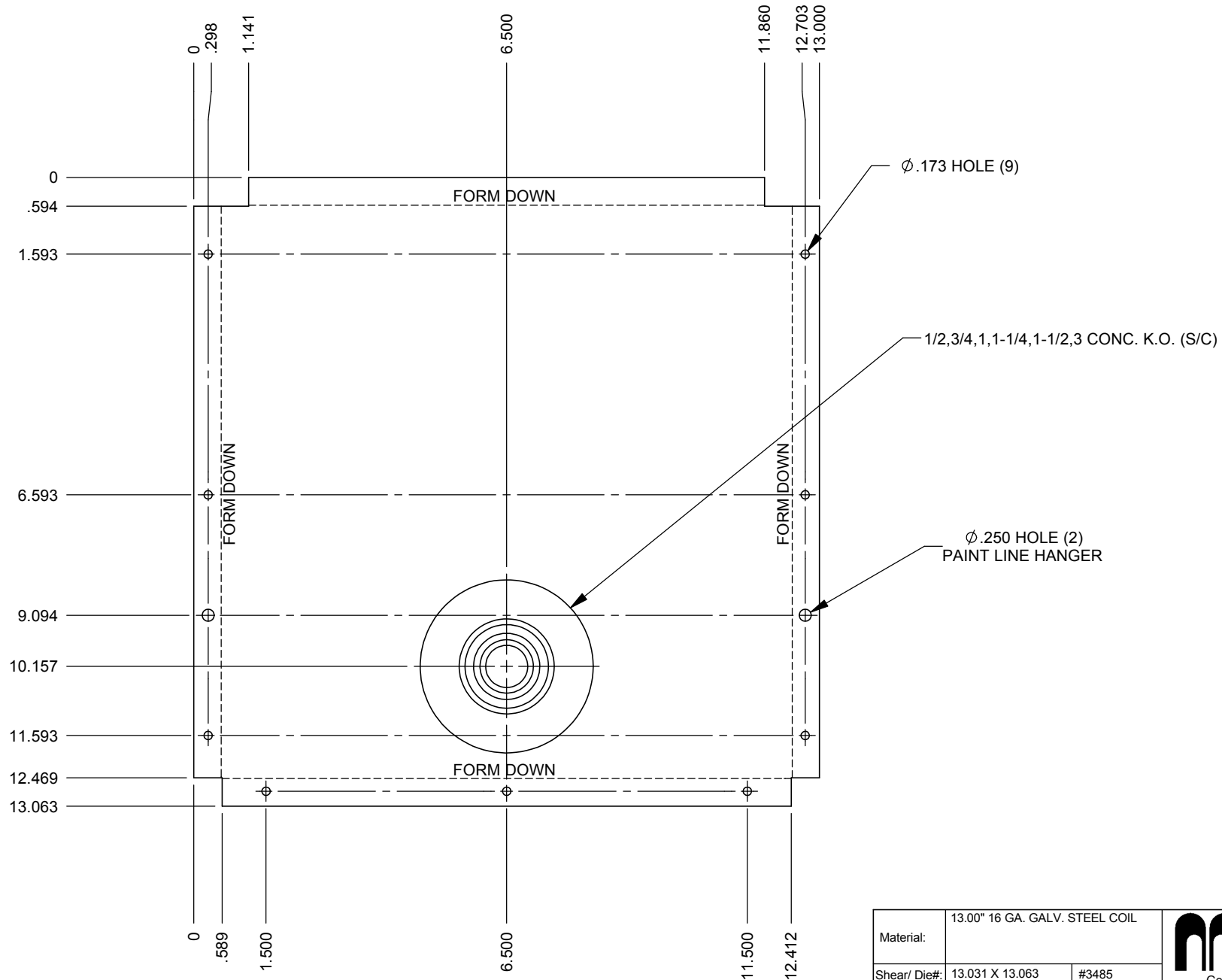
NOTES:

- 1.) WHEN SOLD WITH SUFFIX -SSH PACK
WITH (2) #1132855 BAGS OF SCREWS.

LPN: #811140-SO

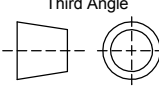
REV.	DATE	DESCRIPTION	BY
E1	2/9/11	REDRAW INTO SOLIDWORKS (ECO #20315)	D.F.
F	9/19/14	REV CHART(eECR2925)	SEM

Material:		13.00" STEEL COIL SEE CHART		<div></div> <div>General Offices: Kansas City, MO</div>					
Shear/ Die#:		13.031 X 13.063	#3485						
Finish:		MILBANK LIGHT GRAY							
Part Wt.:		2.744 LBS. EA.							
Tolerances:		<div>Third Angle</div> 		Title:		END COVER 12x12 GSC1 SCREW COVER WIREWAY			
Unless Specified Otherwise X.X ±.1 X.XX ±.03 X.XXX ±.015 X" ±2"				Catalog No.:		1212GE			
Scale:				NTS		Customer:			
Drawn By:				D.F.		Checked By:			
Date:		2/9/11		Sheet		1 of 2			



LPN: #811140-SO

REV.	DATE	DESCRIPTION	BY
E1	2/9/11	REDRAW INTO SOLIDWORKS (ECO #20315)	D.F.
F	9/19/14	REV CHART(eECR2925)	SEM

Material:	13.00" 16 GA. GALV. STEEL COIL	
Shear/ Die#:	13.031 X 13.063	#3485
Finish:	MILBANK LIGHT GRAY	
Part Wt.:	2.744 LBS. EA.	
Tolerances: Unless Specified Otherwise XX ±.1 X.XX ±.03 X.XXX ±.015 X" ±2"	Third Angle 	
Scale:	NTS	Checked By:
Drawn By:	D.F.	Approved By:

MILBANK
General Offices: Kansas City, MO

Title:	END COVER 12x12 GSC1 SCREW COVER WIREWAY
Catalog No.:	1212GE
Customer:	
Drawing No.:	1103441
Date:	2/9/11
Sheet	2 of 2

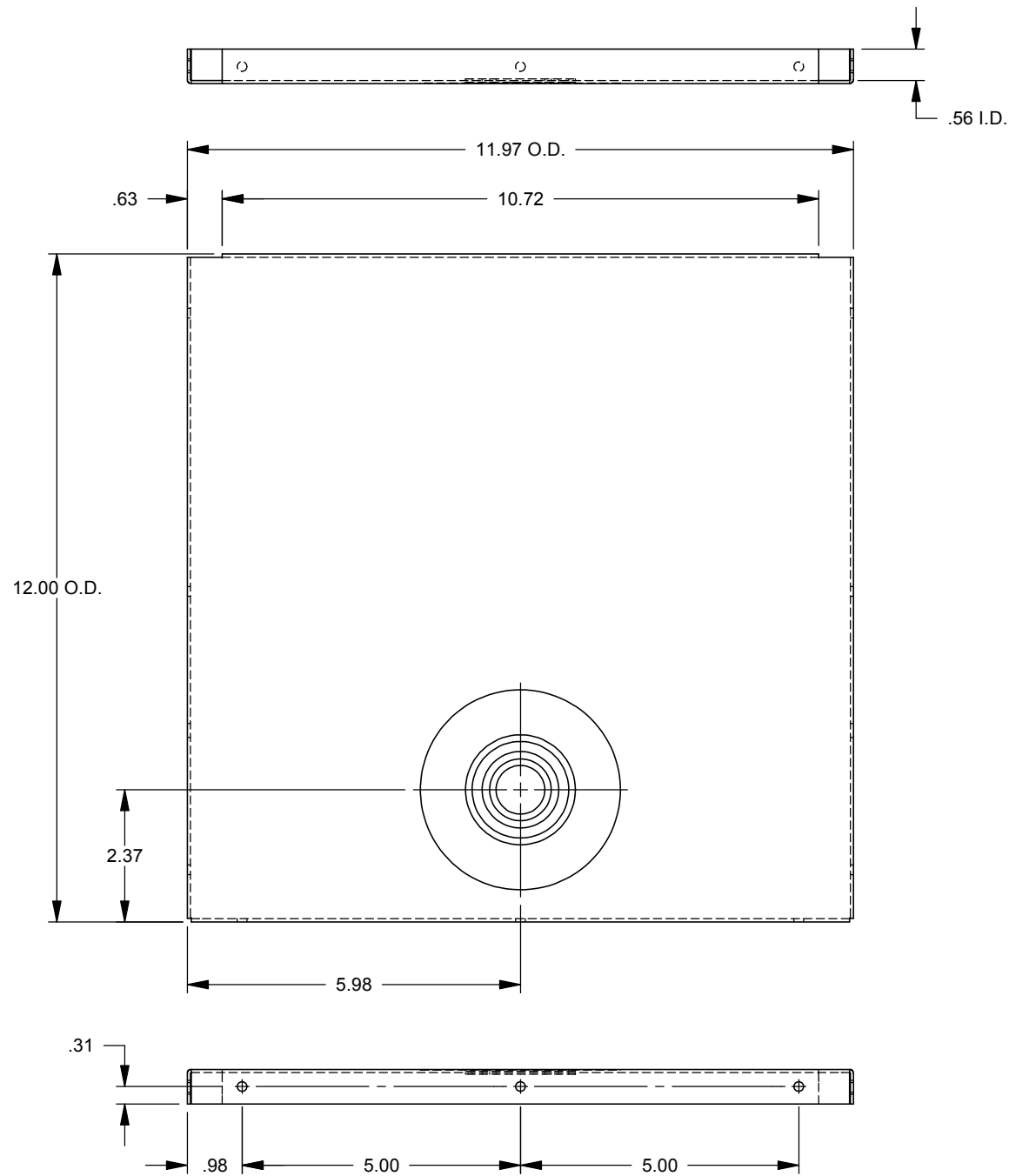


Catalog Number: 1212GE-NK
Item Description: WIREWAY ACCESSORY
UPC Code: 784572101623

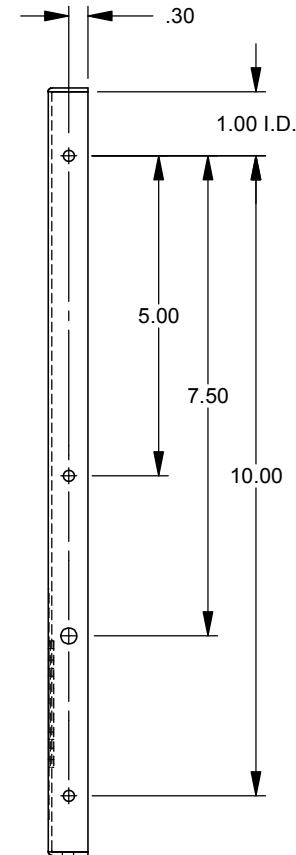
Brand Name: Milbank
Type: Wireway End
Application: Wireway Accessory
Standard: UL Listed, Type 1
Cover Type: Screw Cover
Enclosure: Indoor Enclosure
Nominal Cross Section: 12x12
Material: Steel with Powder Coat Finish
Finish: ANSI 61 Gray
Knockouts: False



Utility requirements may vary. Always consult the serving utility for their requirements prior to ordering or installing this equipment. This product must always be installed by a licensed electrician. Installation of this equipment may require local electrical inspector approval.



PART NO.	LPN	K.O. QTY	MAT'L.
1103441	811140-SO	1	GALV
1011942	811140-NK	N/A	GALV
1002272	811140-SUNK	N/A	CRS
1002270	811140-SU	1	CRS


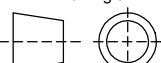


NOTES:

- 1.) WHEN SOLD WITH SUFFIX -SSH PACK
WITH (2) #1132855 BAGS OF SCREWS.

LPN: #811140-SO

REV.	DATE	DESCRIPTION	BY
E1	2/9/11	REDRAW INTO SOLIDWORKS (ECO #20315)	D.F.
F	9/19/14	REV CHART(eECR2925)	SEM

Material:		13.00" STEEL COIL SEE CHART		<div></div> <div>General Offices: Kansas City, MO</div>					
Shear/ Die#:		13.031 X 13.063	#3485						
Finish:		MILBANK LIGHT GRAY							
Part Wt.:		2.744 LBS. EA.							
Tolerances:		<div>Third Angle</div> <div></div>		Title:		END COVER 12x12 GSC1 SCREW COVER WIREWAY			
Unless Specified Otherwise X.X ±.1 X.XX ±.03 X.XXX ±.015 X° ±2°				Catalog No.:		1212GE			
Scale:				NTS		Customer:			
Drawn By:				D.F.		Checked By:			
Approved By:				Date:		2/9/11	Sheet	1 of 2	

MILBANK
General Offices: Kansas City, MO

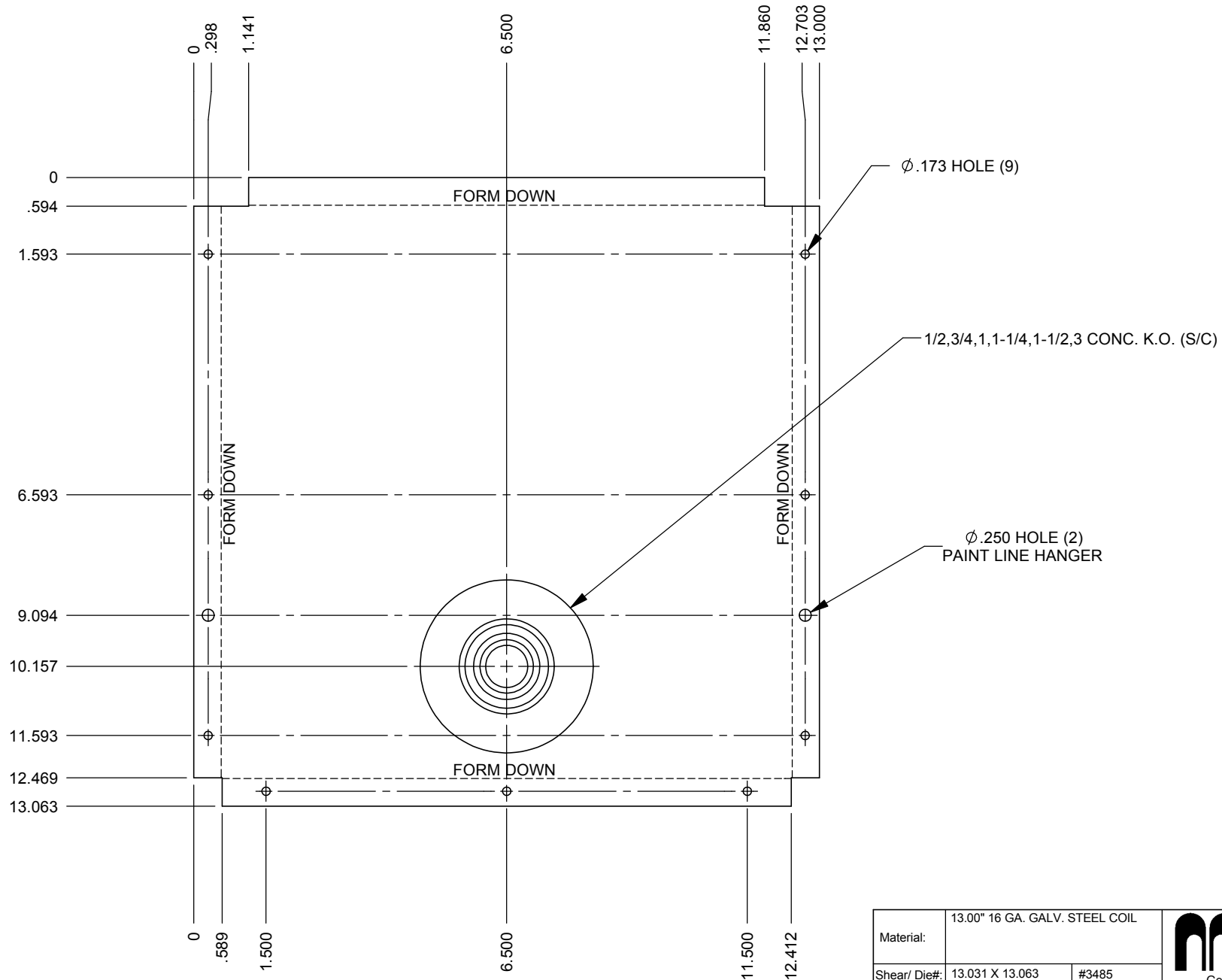
Title: END COVER
12x12 GSC1
SCREW COVER WIREWAY

Catalog No.: 1212GE

Customer:


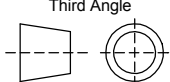
Drawing No.:

1103441



LPN: #811140-SO

REV.	DATE	DESCRIPTION	BY
E1	2/9/11	REDRAW INTO SOLIDWORKS (ECO #20315)	D.F.
F	9/19/14	REV CHART(eECR2925)	SEM

Material:		13.00" 16 GA. GALV. STEEL COIL		<div> General Offices: Kansas City, MO</div>
Shear/ Die#:		13.031 X 13.063	#3485	
Finish: MILBANK LIGHT GRAY				
Part Wt.: 2.744 LBS. EA.				
Tolerances: Unless Specified Otherwise X.X ±.1 X.XX ±.03 X.XXX ±.015 X° ±2°		Third Angle 		Title: END COVER 12x12 GSC1 SCREW COVER WIREWAY
Scale:		NTS	Checked By:	Catalog No.: 1212GE
Drawn By:		D.F.	Approved By:	Customer:
				Drawing No.: 1103441
				Date: 2/9/11 Sheet 2 of 2