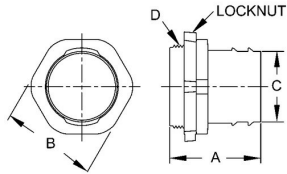




FLEXIBLE METAL SCREW-IN AND SET-SCREW TYPE CONNECTORS AND COUPLINGS

Screw-In Connectors Die Cast Zinc
N/A

B65



Catalog #: 2283

APPLICATIONS

For use in dry locations to bond flexible metal conduit to a box or enclosure
N/A

PRODUCT FEATURES

Rugged metallic construction insures mechanical protection for the raceway

UL LISTED

Standard 514B, UL Listed E195969

CSA

C22.2 No. 18

GENERAL PRODUCT INFORMATION

Trade Size: 3/4 in.

DRAWING DIMENSIONS

Dimension A: 1-5/8 in.
Dimension B: 1-1/8 in.
Dimension C: 53/64 in.
Thread Spec. D: 3/4 in. - 14 NPSM

PACKAGING

Package Type: Carton
Std. Pkg.: 25
Ship Carton Qty.: 250
Product UPC-A Labeled: No
Weight (Lbs. Per/C): 9.30
Ship Carton Length (in.): 19.00
Ship Carton Width (in.): 10.62
Ship Carton Height (in.): 5.31
Ctn Weight (Lbs.): 23.25
UPC Number: 050169022832
I2of5: 50050169022837