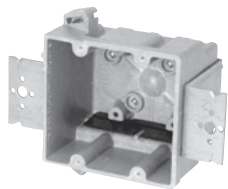


Two Gang:

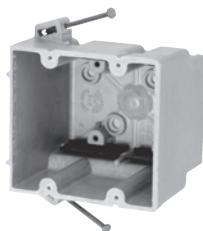
Residential Switch or Receptacle Box

Series 2300-2Z2



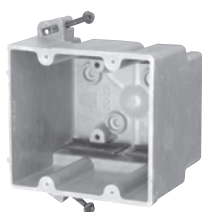
Cu. In. Volume	Catalog Number	Component Description	D	W	H	UPC# 85339	Std. Pkg. Qty.	Std. Pkg. Wt. (lb.)
32.5	2300-2Z2	1/4" offset, "Z" hanger each side of box, Speed Klamps™-bulk packed	3	4	3-3/4	12500	25	21
32.5	2300-2Z2K*	1/4" offset, "Z" hanger each side of box, Speed Klamps™-factory installed	3	4	3-3/4	12501	25	21

Series 2300-N



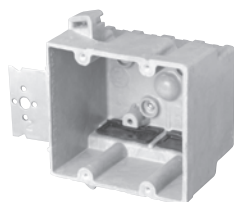
Cu. In. Volume	Catalog Number	Component Description	D	W	H	UPC# 85339	Std. Pkg. Qty.	Std. Pkg. Wt. (lb.)
32.5	2300-N	Angled mid-nails, Speed Klamps™-bulk packed	3	4	3-3/4	12125	50	29
32.5	2300-NC2	Angled mid-nails, 2 wire clamps-factory installed	3	4	3-3/4	12135	50	31
32.5	2300-NC4	Angled mid-nails, 4 wire clamps-factory installed	3	4	3-3/4	12145	50	31
32.5	2300-NK*	Angled mid-nails, Speed Klamps™-factory installed	3	4	3-3/4	12127	50	30

Series 2300-SS



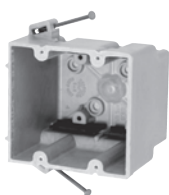
Cu. In. Volume	Catalog Number	Component Description	D	W	H	UPC# 85339	Std. Pkg. Qty.	Std. Pkg. Wt. (lb.)
32.5	2300-SS	Steel stud screws for use with non-load bearing studs 22 gauge or lighter, Speed Klamps™-bulk packed	3	4	3-3/4	12202	50	31
32.5	2300-SSK*	Steel stud screws for use with non-load bearing studs 22 gauge or lighter, Speed Klamps™-factory installed	3	4	3-3/4	12203	50	32

Series 2300-Z2



Cu. In. Volume	Catalog Number	Component Description	D	W	H	UPC# 85339	Std. Pkg. Qty.	Std. Pkg. Wt. (lb.)
32.5	2300-Z2	1/4" offset, "Z" hanger, Speed Klamps™-bulk packed	3	4	3-3/4	12400	50	35
32.5	2300-Z2K*	1/4" offset, "Z" hanger, Speed Klamps™-factory installed	3	4	3-3/4	12401	50	36
32.5	2300-Z4	1/2" offset, "Z" hanger, Speed Klamps™-bulk packed	3	4	3-3/4	12700	50	38
32.5	2300-Z4K	1/2" offset, "Z" hanger, Speed Klamps™-factory installed	3	4	3-3/4	12701	50	39

Series 2302-N



Cu. In. Volume	Catalog Number	Component Description	D	W	H	UPC# 85339	Std. Pkg. Qty.	Std. Pkg. Wt. (lb.)
37.0	2302-N	Angled mid-nails, Speed Klamps™-bulk packed	3-7/16	4	3-3/4	13060	50	31
37.0	2302-NC2	Angled mid-nails, 2 wire clamps-factory installed	3-7/16	4	3-3/4	13065	50	33
37.0	2302-NC4	Angled mid-nails, 4 wire clamps-factory installed	3-7/16	4	3-3/4	13070	50	35
37.0	2302-NK*	Angled mid-nails, Speed Klamps™-factory installed	3-7/16	4	3-3/4	13075	50	32

* Indicates model shown • See page 7 for Attachment Coding descriptions

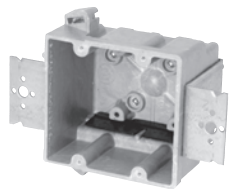
Allied Moulded Products, Inc., Bryan, OH 43506 • ph: 419-636-4217 • fax: 800-237-7269 • www.alliedmoulded.com



Two Gang:

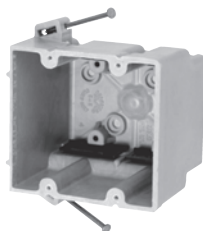
Residential Switch or Receptacle Box

Series 2300-2Z2



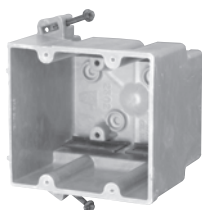
Cu. In. Volume	Catalog Number	Component Description	D	W	H	UPC# 85339	Std. Pkg. Qty.	Std. Pkg. Wt. (lb.)
32.5	2300-2Z2	1/4" offset, "Z" hanger each side of box, Speed Klamps™-bulk packed	3	4	3-3/4	12500	25	21
32.5	2300-2Z2K*	1/4" offset, "Z" hanger each side of box, Speed Klamps™-factory installed	3	4	3-3/4	12501	25	21

Series 2300-N



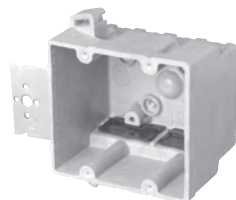
Cu. In. Volume	Catalog Number	Component Description	D	W	H	UPC# 85339	Std. Pkg. Qty.	Std. Pkg. Wt. (lb.)
32.5	2300-N	Angled mid-nails, Speed Klamps™-bulk packed	3	4	3-3/4	12125	50	29
32.5	2300-NC2	Angled mid-nails, 2 wire clamps-factory installed	3	4	3-3/4	12135	50	31
32.5	2300-NC4	Angled mid-nails, 4 wire clamps-factory installed	3	4	3-3/4	12145	50	31
32.5	2300-NK*	Angled mid-nails, Speed Klamps™-factory installed	3	4	3-3/4	12127	50	30

Series 2300-SS



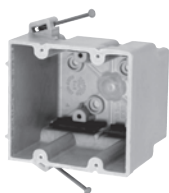
Cu. In. Volume	Catalog Number	Component Description	D	W	H	UPC# 85339	Std. Pkg. Qty.	Std. Pkg. Wt. (lb.)
32.5	2300-SS	Steel stud screws for use with non-load bearing studs 22 gauge or lighter, Speed Klamps™-bulk packed	3	4	3-3/4	12202	50	31
32.5	2300-SSK*	Steel stud screws for use with non-load bearing studs 22 gauge or lighter, Speed Klamps™-factory installed	3	4	3-3/4	12203	50	32

Series 2300-Z2



Cu. In. Volume	Catalog Number	Component Description	D	W	H	UPC# 85339	Std. Pkg. Qty.	Std. Pkg. Wt. (lb.)
32.5	2300-Z2	1/4" offset, "Z" hanger, Speed Klamps™-bulk packed	3	4	3-3/4	12400	50	35
32.5	2300-Z2K*	1/4" offset, "Z" hanger, Speed Klamps™-factory installed	3	4	3-3/4	12401	50	36
32.5	2300-Z4	1/2" offset, "Z" hanger, Speed Klamps™-bulk packed	3	4	3-3/4	12700	50	38
32.5	2300-Z4K	1/2" offset, "Z" hanger, Speed Klamps™-factory installed	3	4	3-3/4	12701	50	39

Series 2302-N



Cu. In. Volume	Catalog Number	Component Description	D	W	H	UPC# 85339	Std. Pkg. Qty.	Std. Pkg. Wt. (lb.)
37.0	2302-N	Angled mid-nails, Speed Klamps™-bulk packed	3-7/16	4	3-3/4	13060	50	31
37.0	2302-NC2	Angled mid-nails, 2 wire clamps-factory installed	3-7/16	4	3-3/4	13065	50	33
37.0	2302-NC4	Angled mid-nails, 4 wire clamps-factory installed	3-7/16	4	3-3/4	13070	50	35
37.0	2302-NK*	Angled mid-nails, Speed Klamps™-factory installed	3-7/16	4	3-3/4	13075	50	32

* Indicates model shown • See page 7 for Attachment Coding descriptions

Allied Moulded Products, Inc., Bryan, OH 43506 • ph: 419-636-4217 • fax: 800-237-7269 • www.alliedmoulded.com

