

SPECIFICATION SHEET

PHOTOCONTROL ACCESSORIES FOR TURN-LOCK CONTROLS

APPLICATIONS MOUNTING BRACKET

Utility mounting bracket for 1/2" threaded conduit photocontrols.

REPLACEMENT CAPS

5500 replaces photocontrol to change light fixture to always ON.
5500-OC replaces photocontrol to change light fixture to always OFF. Durable materials and gasket provide longevity and weatherproof protection.

RECEPTACLE 2223

120-480V 50/60 Hz 15 amp maximum receptacle with color-coded 12" long, #14 leads, gasket and two mounting screws.

RECEPTACLE 2224

120-480V 50/60 Hz 15 amp maximum receptacle with color-coded 12" long, #14 leads, mounting bracket and one mounting screw.

RECEPTACLE 2421

120-480V 50/60 Hz 15 amp maximum receptacle with color-coded 12" long, #14 leads, plastic housing, lock nut (with 1/2" NPT) and a mounting bracket.

MOUNTING BRACKET

DEVICE	CAT. NO.	UPC CODE	DESCRIPTION
--------	----------	----------	-------------



73866

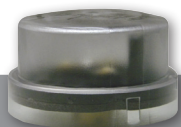
62020

Mounting Bracket

REPLACEMENT CAPS



DEVICE	CAT. NO.	UPC CODE	DESCRIPTION
--------	----------	----------	-------------



5500

61130

Shorting cap
480VAC max
1800W Tungsten
1800VA Ballast

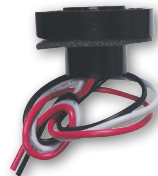
5500-OC

61132

Open cap
480VAC max
(Black housing)

RECEPTACLE cUL^{us}

DEVICE	CAT. NO.	UPC CODE	DESCRIPTION
--------	----------	----------	-------------



2223

61025

Receptacle with gasket

RECEPTACLE cUL^{us}

DEVICE	CAT. NO.	UPC CODE	DESCRIPTION
--------	----------	----------	-------------



2224

61026

Receptacle and mounting bracket

RECEPTACLE cUL^{us}

DEVICE	CAT. NO.	UPC CODE	DESCRIPTION
--------	----------	----------	-------------

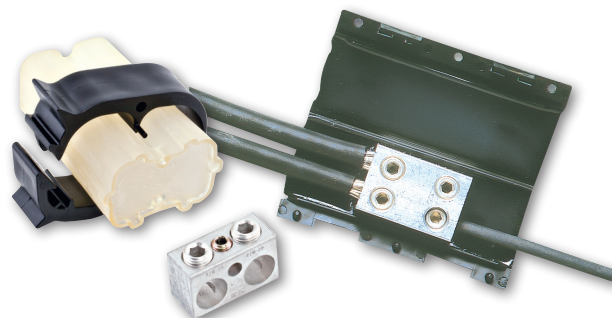


2421

61021

Receptacle with plastic housing and bracket

NSi offers many splicing options to complete the pole installation.
See the catalog splicing section pages 211- 232.



SPECIFICATION SHEET

PHOTOCONTROL ACCESSORIES FOR TURN-LOCK CONTROLS

APPLICATIONS MOUNTING BRACKET

Utility mounting bracket for 1/2" threaded conduit photocontrols.

REPLACEMENT CAPS

5500 replaces photocontrol to change light fixture to always ON.
5500-OC replaces photocontrol to change light fixture to always OFF. Durable materials and gasket provide longevity and weatherproof protection.

RECEPTACLE 2223

120-480V 50/60 Hz 15 amp maximum receptacle with color-coded 12" long, #14 leads, gasket and two mounting screws.

RECEPTACLE 2224

120-480V 50/60 Hz 15 amp maximum receptacle with color-coded 12" long, #14 leads, mounting bracket and one mounting screw.

RECEPTACLE 2421

120-480V 50/60 Hz 15 amp maximum receptacle with color-coded 12" long, #14 leads, plastic housing, lock nut (with 1/2" NPT) and a mounting bracket.

MOUNTING BRACKET

DEVICE	CAT. NO.	UPC CODE	DESCRIPTION
--------	----------	----------	-------------



73866

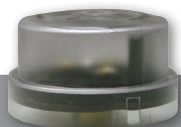
62020

Mounting Bracket

REPLACEMENT CAPS



DEVICE	CAT. NO.	UPC CODE	DESCRIPTION
--------	----------	----------	-------------



5500

61130

Shorting cap
480VAC max
1800W Tungsten
1800VA Ballast

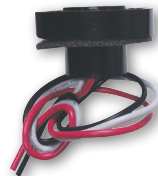
5500-OC

61132

Open cap
480VAC max
(Black housing)

RECEPTACLE cUL^{us}

DEVICE	CAT. NO.	UPC CODE	DESCRIPTION
--------	----------	----------	-------------



2223

61025

Receptacle with gasket

RECEPTACLE cUL^{us}

DEVICE	CAT. NO.	UPC CODE	DESCRIPTION
--------	----------	----------	-------------



2224

61026

Receptacle and mounting bracket

RECEPTACLE cUL^{us}

DEVICE	CAT. NO.	UPC CODE	DESCRIPTION
--------	----------	----------	-------------



2421

61021

Receptacle with plastic housing and bracket

NSi offers many splicing options to complete the pole installation.
See the catalog splicing section pages 211- 232.

