



Catalog Number:
Item Description:
UPC Code:

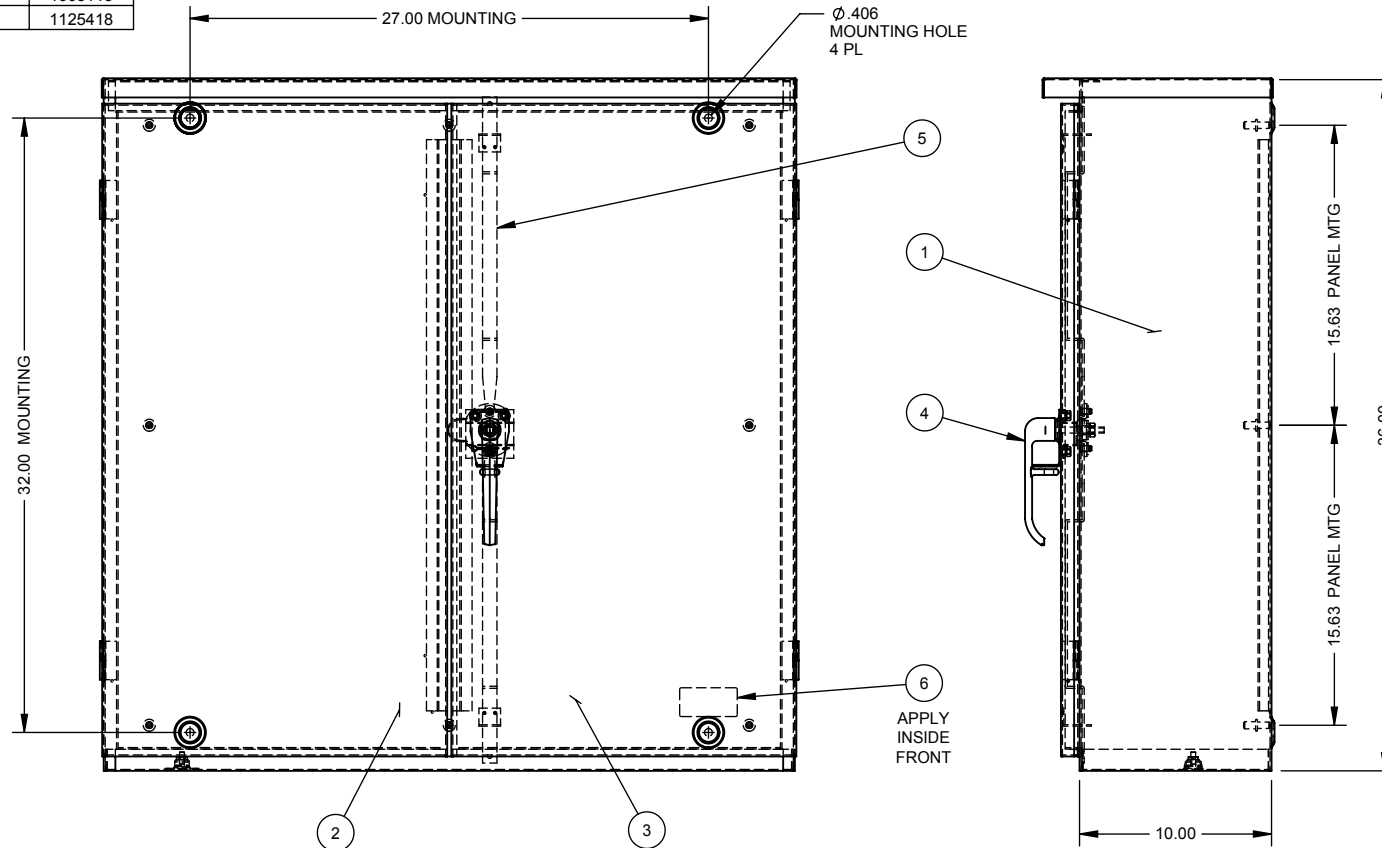
363610-CT3R
CT3R HINGED PADLCKBL ENCL
784572173682

Brand Name: Milbank
Type: Hinge Cover
Special Features: Double Door
Application: Current Transformer Enclosure
Standard: UL Listed
Material: Steel with Powder Coat Finish
Cable Entry: No Knockouts
Mounting: Pad Mount, Wall Mount
NEMA Rating: Type 3R



Utility requirements may vary. Always consult the serving utility for their requirements prior to ordering or installing this equipment. This product must always be installed by a licensed electrician. Installation of this equipment may require local electrical inspector approval.

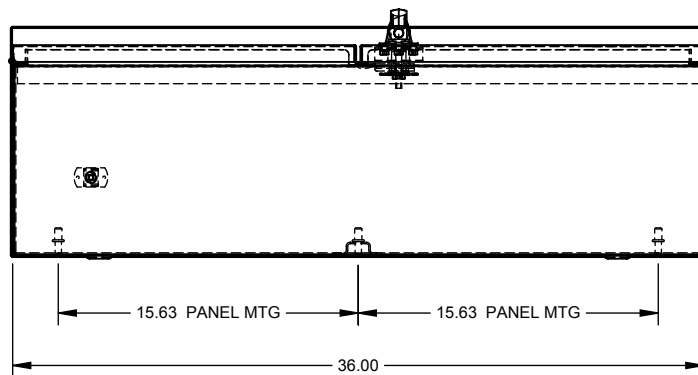
PREFIX	LABEL NO.
NONE	1003115
RC-	1125418



NO.	QTY.	PART NO.	DESCRIPTION
1	1	1155725	BACK WELDMENT
2	1	1004553	FRONT WELDMENT, LEFT
3	1	1004554	FRONT WELDMENT, RIGHT
4	1	1004575	ASSY, 3PT LATCH, PADLCKBL
5	2	814460	LATCH SLIDE
6	1	(SEE CHART)	LABEL (UL)
7	2	1002169	BAG ASSY (NOT SHOWN)



NOTES:

- 1) PACK INSIDE ENCLOSURE (NOT SHOWN).
2. FOR CATALOG NUMBERS WITH -PI SUFFIX INSTALL PANEL #1096550 USING BAG ASSEMBLY IN B.O.M.
3. FOR CATALOG NUMBERS WITH -WB SUFFIX INSTALL PANEL #1002359 USING BAG ASSEMBLY IN B.O.M.
4. USE CARTON #1002995 FOR SHIPPING.



NEMA DWG.: #847

C	12-12-02	REDESIGNED - PDR 2948	DR	C2	10/4/11	UPDATE TO M2K (ECO #21396)	D.F.	Scale:	NTS	Checked By:		Drawing No.:	1004194
C1	9-19-06	mECO #15183, ADDED NOTE #5.	CMW					Drawn By:	DR	Approved By:		Date:	12-12-02

Material:	GALV. STEEL		 MILBANK MANUFACTURING CO.	General Offices: Kansas City, MO		
Finish:	MILBANK LIGHT GRAY			Title:	36 x 36 x 10, 2 DOOR TYPE 3R, FREE STANDING	
Tolerances: Unless Specified Otherwise X.X ±.1 X.XX ±.03 X.XXX ±.015 X" ±2°			Third Angle 		Catalog No.:	363610-CT3R-()
			Projection		Customer:	MILBANK STANDARD
F.	Scale:	NTS	Checked By:		Drawing No.:	1004194
	Drawn By:	DR	Approved By:		Date:	12-12-02
					Sheet	1 of 1



Catalog Number:
Item Description:
UPC Code:

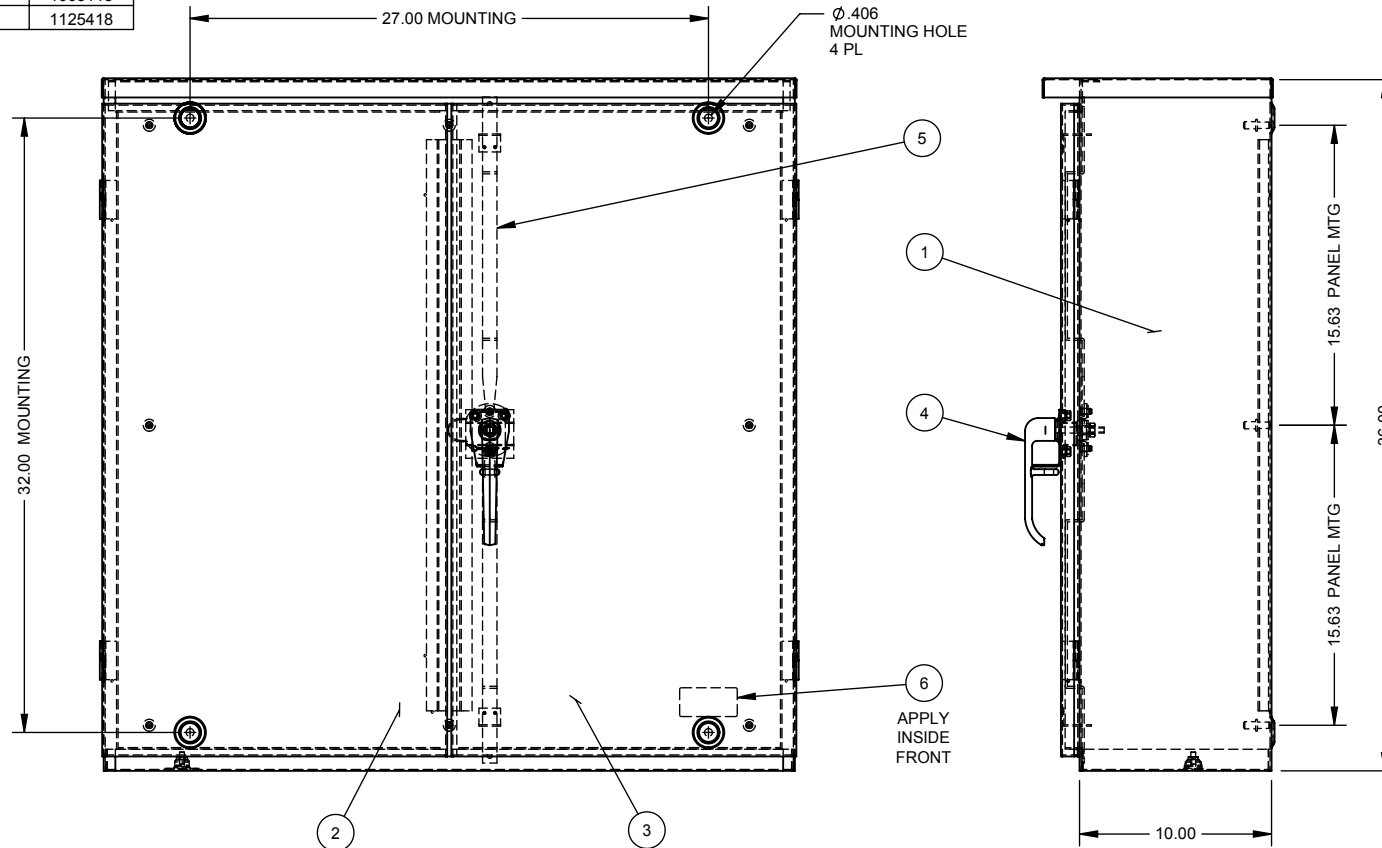
363610-CT3R
CT3R HINGED PADLCKBL ENCL
784572173682

Brand Name: Milbank
Type: Hinge Cover
Special Features: Double Door
Application: Current Transformer Enclosure
Standard: UL Listed
Material: Steel with Powder Coat Finish
Cable Entry: No Knockouts
Mounting: Pad Mount, Wall Mount
NEMA Rating: Type 3R



Utility requirements may vary. Always consult the serving utility for their requirements prior to ordering or installing this equipment. This product must always be installed by a licensed electrician. Installation of this equipment may require local electrical inspector approval.

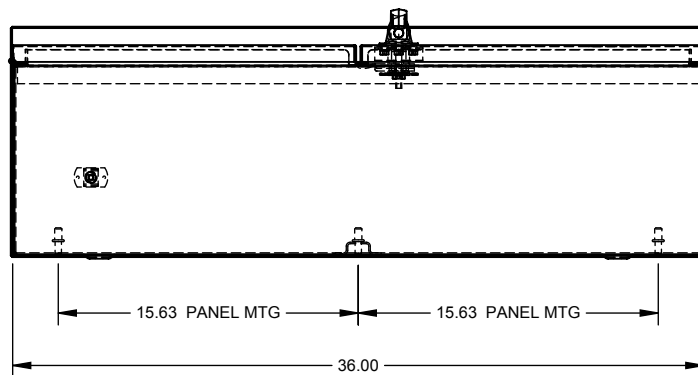
PREFIX	LABEL NO.
NONE	1003115
RC-	1125418



NO.	QTY.	PART NO.	DESCRIPTION
1	1	1155725	BACK WELDMENT
2	1	1004553	FRONT WELDMENT, LEFT
3	1	1004554	FRONT WELDMENT, RIGHT
4	1	1004575	ASSY, 3PT LATCH, PADLCKBL
5	2	814460	LATCH SLIDE
6	1	(SEE CHART)	LABEL (UL)
7	2	1002169	BAG ASSY (NOT SHOWN)



NOTES:

- 1) PACK INSIDE ENCLOSURE (NOT SHOWN).
2. FOR CATALOG NUMBERS WITH -PI SUFFIX INSTALL PANEL #1096550 USING BAG ASSEMBLY IN B.O.M.
3. FOR CATALOG NUMBERS WITH -WB SUFFIX INSTALL PANEL #1002359 USING BAG ASSEMBLY IN B.O.M.
4. USE CARTON #1002995 FOR SHIPPING.



NEMA DWG.: #847

C	12-12-02	REDESIGNED - PDR 2948	DR	C2	10/4/11	UPDATE TO M2K (ECO #21396)	D.F.	Scale:	NTS	Checked By:		Drawing No.:	1004194
C1	9-19-06	mECO #15183, ADDED NOTE #5.	CMW					Drawn By:	DR	Approved By:		Date:	12-12-02

Material:	GALV. STEEL		 MILBANK MANUFACTURING CO.	General Offices: Kansas City, MO			
Finish:	MILBANK LIGHT GRAY			Title:	36 x 36 x 10, 2 DOOR TYPE 3R, FREE STANDING		
Tolerances: Unless Specified Otherwise X.X ±.1 X.XX ±.03 X.XXX ±.015 X" ±2°		 Third Angle Projection			Catalog No.:	363610-CT3R-()	
				Customer:	MILBANK STANDARD		
F.	Scale:	NTS	Checked By:		Drawing No.:	1004194	
Drawn By:		DR	Approved By:		Date:	12-12-02	Sheet 1 of 1