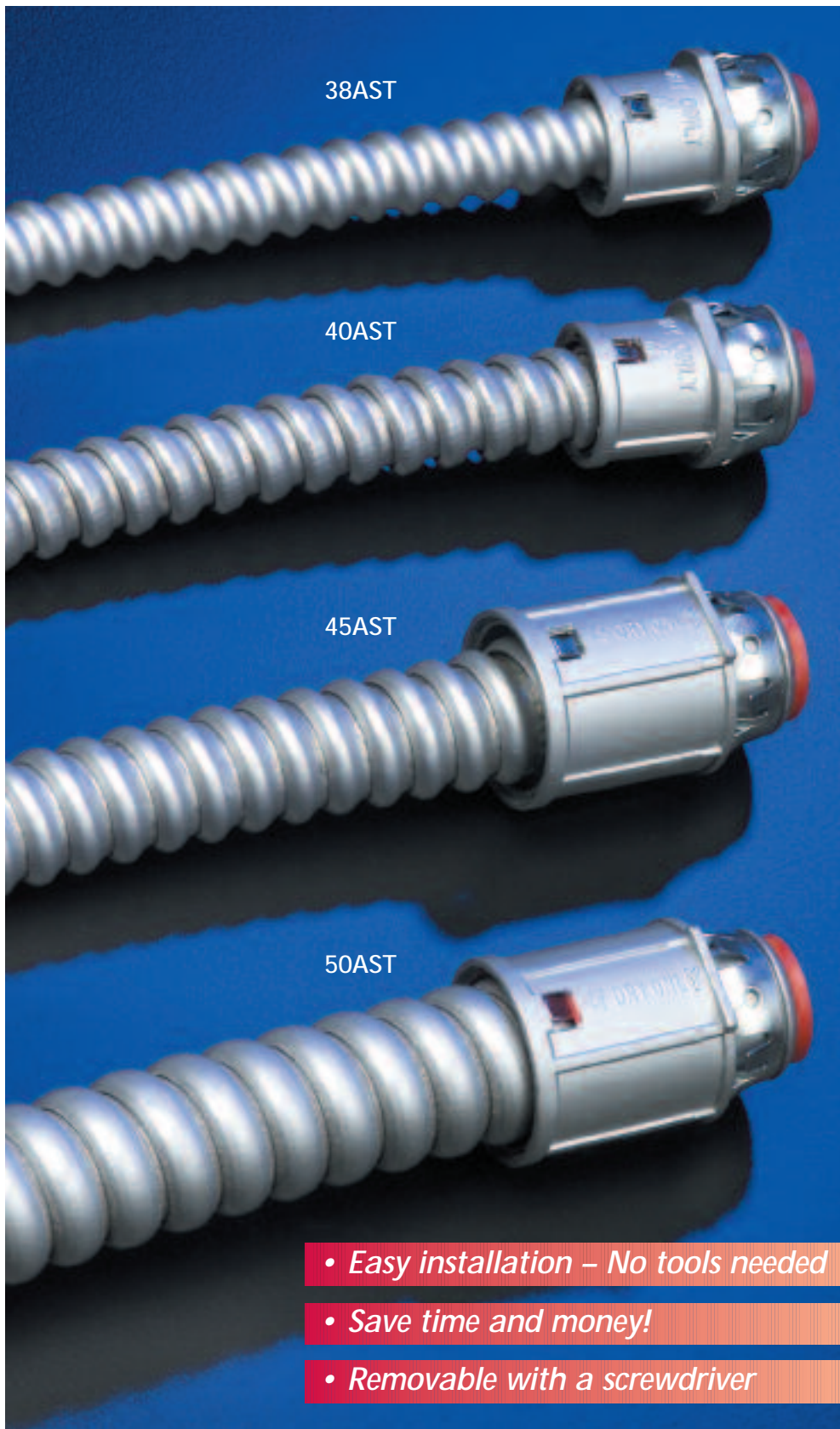


More
on
reverse

Connectors with the Widest Cable Ranges

for Flex • AC • MC • HCF Cable



38AST

40AST

45AST

50AST

- Easy installation – No tools needed
- Save time and money!
- Removable with a screwdriver

Arlington's **SNAP²IT**® connectors are designed for safe and fast installations of flex, MC, AC, and HCF cable – and cover the widest cable ranges in the industry.

They save time too – about 17 seconds per fitting. Just snap the fitting onto the cable, then into the electrical box. No tools are required for the installation.

For easier insertion of larger cables or for overlapping cable ranges, use the larger 40AST or 50AST fittings.

- Easy to remove with a screwdriver – Just lift the ring and twist off
- Competitively priced
- UL/CSA Listed

SNAP²IT.®

A  
Arlington

1 Stauffer Industrial Park
Scranton, PA 18517
800/233.4717
Fax 570/562.0646
www.aifittings.com

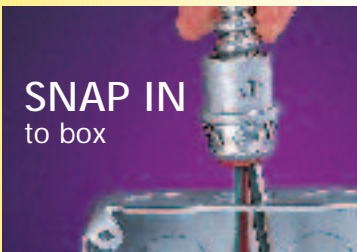
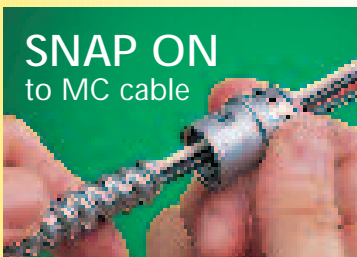
Patented

SNAP²IT[®] Connectors

with the Widest Cable Ranges in the Industry

SNAP²IT[®] connectors are fast and easy to install!

There's no locknut to lose. Push cable into the fitting up to the end stop. Rotate cable clockwise until tight. Remove cable from the fitting by turning it counter-clockwise.



Easy to remove.



Just lift the ring with a screwdriver and twist off.



Catalog Nos. 38AST, 38A, 380ST, 380AST, 3838A, 3838AST, 3890AST

Cable Type	Cable Range
MC/HCF Cable Steel and Aluminum	14/2, 14/3, 14/4, 12/2, 12/3, 12/4, 10/2
AC/HCF Cable Steel and Aluminum	
Flexible Metal Conduit Steel and Aluminum (Regular and Reduced Wall)	3/8" Trade Size CSA Only - Use Anti-Short Bushing
MC Cable Continuous Corrugated Aluminum	14/4, 12/2, 12/3, 12/4, 10/2

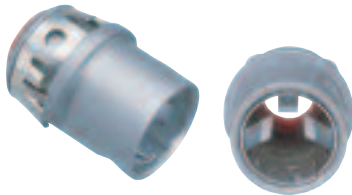
Catalog Nos. 40AST, 400AST, 4040AST, 4090AST

Cable Type	Cable Range
MC/HCF Cable Steel and Aluminum	14/2 w/gr., 14/4, 12/2 w/gr., 12/3, 12/3 w/gr., 10/2 w/gr., 10/3
AC/HCF Cable Steel and Aluminum	
Flexible Metal Conduit Steel and Aluminum (Regular and Reduced Wall)	3/8" Trade Size CSA Only - Use Anti-Short Bushing
MC Cable Continuous Corrugated Aluminum	14/4, 12/2 w/gr., 12/3, 12/4, 10/2 w/gr., 10/3

Catalog Nos. 45AST, 50AST, 5090AST

Cable Type	Cable Range	
	45AST	50AST, 5090AST
MC/HCF Cable Steel and Aluminum	10/3 to 6-2	8/3 to 4-2
AC/HCF Cable Steel and Aluminum		
Flexible Metal Conduit Steel and Aluminum (Regular and Reduced Wall)	—	1/2" Flex

38AST



40AST



40AST
End View



3838ST



4040AST



1 Stauffer Industrial Park
Scranton, PA 18517
800/233.4717
Fax 570/562.0646
www.aifittings.com

U.S. Patents: 5,266,050; 5,373,106; 5,171,164; 6,043,432; 6,080,933; 6,114,630; 6,133,529; 6,194,661; 6,355,884; Canada 2,083,479.
Additional patents pending.

Distributed by

More
on
reverse

Connectors with the Widest Cable Ranges

for Flex • AC • MC • HCF Cable



38AST

40AST

45AST

50AST

- Easy installation – No tools needed
- Save time and money!
- Removable with a screwdriver

Arlington's **SNAP²IT**® connectors are designed for safe and fast installations of flex, MC, AC, and HCF cable – and cover the widest cable ranges in the industry.

They save time too – about 17 seconds per fitting. Just snap the fitting onto the cable, then into the electrical box. No tools are required for the installation.

For easier insertion of larger cables or for overlapping cable ranges, use the larger 40AST or 50AST fittings.

- Easy to remove with a screwdriver – Just lift the ring and twist off
- Competitively priced
- UL/CSA Listed

SNAP²IT.®

A  
Arlington

1 Stauffer Industrial Park
Scranton, PA 18517
800/233.4717
Fax 570/562.0646
www.aifittings.com

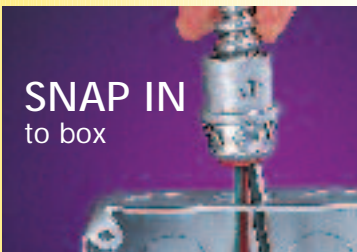
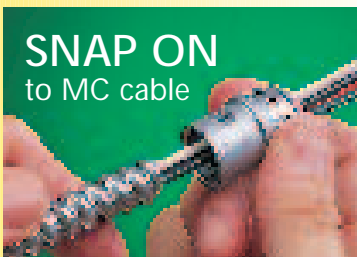
Patented

SNAP²IT[®] Connectors

with the Widest Cable Ranges in the Industry

SNAP²IT[®] connectors are fast and easy to install!

There's no locknut to lose. Push cable into the fitting up to the end stop. Rotate cable clockwise until tight. Remove cable from the fitting by turning it counter-clockwise.



Easy to remove.



Just lift the ring with a screwdriver and twist off.



Catalog Nos. 38AST, 38A, 380ST, 380AST, 3838A, 3838AST, 3890AST

Cable Type	Cable Range
MC/HCF Cable Steel and Aluminum	14/2, 14/3, 14/4, 12/2, 12/3, 12/4, 10/2
AC/HCF Cable Steel and Aluminum	
Flexible Metal Conduit Steel and Aluminum (Regular and Reduced Wall)	3/8" Trade Size CSA Only - Use Anti-Short Bushing
MC Cable Continuous Corrugated Aluminum	14/4, 12/2, 12/3, 12/4, 10/2

Catalog Nos. 40AST, 400AST, 4040AST, 4090AST

Cable Type	Cable Range
MC/HCF Cable Steel and Aluminum	14/2 w/gr., 14/4, 12/2 w/gr., 12/3, 12/3 w/gr., 10/2 w/gr., 10/3
AC/HCF Cable Steel and Aluminum	
Flexible Metal Conduit Steel and Aluminum (Regular and Reduced Wall)	3/8" Trade Size CSA Only - Use Anti-Short Bushing
MC Cable Continuous Corrugated Aluminum	14/4, 12/2 w/gr., 12/3, 12/4, 10/2 w/gr., 10/3

Catalog Nos. 45AST, 50AST, 5090AST

Cable Type	Cable Range	
	45AST	50AST, 5090AST
MC/HCF Cable Steel and Aluminum	10/3 to 6-2	8/3 to 4-2
AC/HCF Cable Steel and Aluminum		
Flexible Metal Conduit Steel and Aluminum (Regular and Reduced Wall)	—	1/2" Flex

38AST



40AST



40AST
End View



3838ST



4040AST



1 Stauffer Industrial Park
Scranton, PA 18517
800/233.4717
Fax 570/562.0646
www.aifittings.com

U.S. Patents: 5,266,050; 5,373,106; 5,171,164; 6,043,432; 6,080,933; 6,114,630; 6,133,529; 6,194,661; 6,355,884; Canada 2,083,479.
Additional patents pending.

Distributed by