



# ELLIOTT ELECTRIC SUPPLY

We Deliver...Lower Cost, Quality Products, & Personal Service

2310 N. Stallings Dr.  
75964-0000, TX Nacogdoches  
Phone: 936-569-7941  
Fax: 936-560-4685



## 4300N 4G Wall Box - Nail On

*Allied Moulded Products*

Catalog Number	4300N
Manufacturer	Allied Moulded Products
Description	Electrical Box, Fiberglass Reinforced Polyester BMC;Carbon Steel (Fastener);Poly Vinyl Chloride (Clamp) Material, Beige/Tan, 4300-NK Model, 60 Cu.In Capacity, Non-Metallic Speed Clamp Cable Entry, 4 Gang, Rectangular, Angled Mid Nail, 7-1/2 In Length, 3 In Width, 3-3/4 In Height, 18 LB
Weight per unit	0.9000 (lbs/each)
Product Category	Non-Metallic

### Features

Cable Entry	NON METALLIC SPEED CLAMP
Device Mounting Holes	8 in

### Dimensions and Weight

Depth	3 INCH
Depth in inch	3 in
Height in inch	3.75 in
Width in inch	7.5 WO

### Descriptions

Additional Information	Color Beige/Tan; Application New and Old Work Residential Construction 2 Hour Fire Resistive Walls
Commodity Description	Outlet Boxes, Etc. - Non-Metallic
Description	4G WALL BOX - NAIL ON

### Manufacturer Information

Brand	Allied Moulded Products
GTIN	00085339162254
UPC	085339162254

### Taxonomies, Classifications, and Categories

Category Description	PLASTIC BOXES
Type	Gangable, New Work

### Packaging

Carton	18
Standard Package	20 A
Weight Per each	0.9

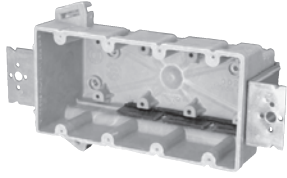
### Uses, Certifications, and Standards

Approval	UL, ANSI/UL 514C
Mounting	Angled Mid Nails

# Four Gang:

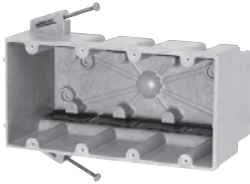
## Residential Switch or Receptacle Box

### Series 4300-2Z2



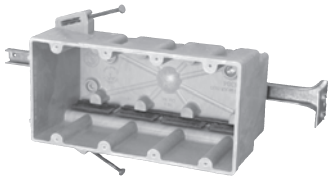
Cu. In. Volume	Catalog Number	Component Description	D	W	H	UPC# 85339	Std. Pkg. Qty.	Std. Pkg. Wt. (lb.)
60.0	4300-2Z2	1/4" offset, "Z" hanger each side of box, Speed Klamps™-bulk packed	3	7-1/2	3-3/4	16905	12	15
60.0	4300-2Z2K*	1/4" offset, "Z" hanger each side of box, Speed Klamps™-factory installed	3	7-1/2	3-3/4	16907	12	15

### Series 4300-N



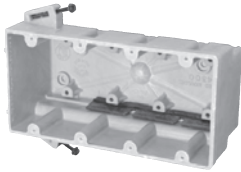
Cu. In. Volume	Catalog Number	Component Description	D	W	H	UPC# 85339	Std. Pkg. Qty.	Std. Pkg. Wt. (lb.)
60.0	4300-N	Angled mid-nails, Speed Klamps™-bulk packed	3	7-1/2	3-3/4	16225	20	18
60.0	4300-NC4	Angled mid-nails, 4 wire clamps-factory installed	3	7-1/2	3-3/4	16245	20	20
60.0	4300-NK*	Angled mid-nails, Speed Klamps™-factory installed	3	7-1/2	3-3/4	16226	20	19

### Series 4300-NB



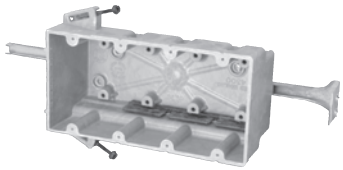
Cu. In. Volume	Catalog Number	Component Description	D	W	H	UPC# 85339	Std. Pkg. Qty.	Std. Pkg. Wt. (lb.)
60.0	4300-NB	Angled mid-nails, adj. stabilizing bar, Speed Klamps™-bulk packed	3	7-1/2	3-3/4	16270	20	25
60.0	4300-NBC4	Angled mid-nails, adj. stabilizing bar, 4 wire clamps-factory installed	3	7-1/2	3-3/4	16290	20	26
60.0	4300-NBK*	Angled mid-nails, adj. stabilizing bar, Speed Klamps™-factory installed	3	7-1/2	3-3/4	16271	20	25

### Series 4300-SS



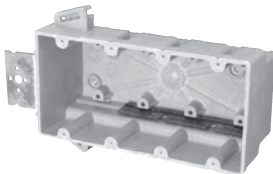
Cu. In. Volume	Catalog Number	Component Description	D	W	H	UPC# 85339	Std. Pkg. Qty.	Std. Pkg. Wt. (lb.)
60.0	4300-SS	Steel stud screws for use with non-load bearing studs 22 gauge or lighter, Speed Klamps™-bulk packed	3	7-1/2	3-3/4	16233	20	20
60.0	4300-SSK*	Steel stud screws for use with non-load bearing studs 22 gauge or lighter, Speed Klamps™-factory installed	3	7-1/2	3-3/4	16232	20	21

### Series 4300-SSB



Cu. In. Volume	Catalog Number	Component Description	D	W	H	UPC# 85339	Std. Pkg. Qty.	Std. Pkg. Wt. (lb.)
60.0	4300-SSB	Steel stud screws for use with non-load bearing studs 22 gauge or lighter, adj. stabilizing bar, Speed Klamps™-bulk packed	3	7-1/2	3-3/4	16229	20	26
60.0	4300-SSBK*	Steel stud screws for use with non-load bearing studs 22 gauge or lighter, adj. stabilizing bar, Speed Klamps™-factory installed	3	7-1/2	3-3/4	16234	20	27

### Series 4300-Z2



Cu. In. Volume	Catalog Number	Component Description	D	W	H	UPC# 85339	Std. Pkg. Qty.	Std. Pkg. Wt. (lb.)
60.0	4300-Z2	1/4" offset, "Z" hanger, Speed Klamps™-bulk packed	3	7-1/2	3-3/4	16725	12	14
60.0	4300-Z2K*	1/4" offset, "Z" hanger, Speed Klamps™-factory installed	3	7-1/2	3-3/4	16906	12	14

\* Indicates model shown • See page 7 for Attachment Coding descriptions

