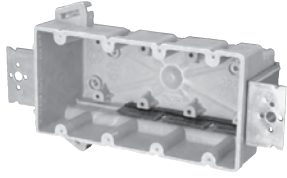


# Four Gang:

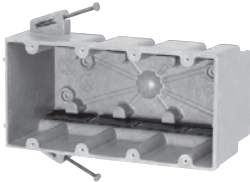
## Residential Switch or Receptacle Box

### Series 4300-2Z2



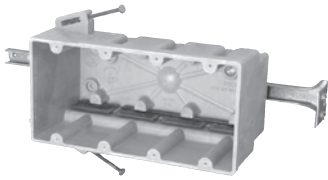
Cu. In. Volume	Catalog Number	Component Description	D	W	H	UPC# 85339	Std. Pkg. Qty.	Std. Pkg. Wt. (lb.)
60.0	4300-2Z2	1/4" offset, "Z" hanger each side of box, Speed Klamps™-bulk packed	3	7-1/2	3-3/4	16905	12	15
60.0	4300-2Z2K*	1/4" offset, "Z" hanger each side of box, Speed Klamps™-factory installed	3	7-1/2	3-3/4	16907	12	15

### Series 4300-N



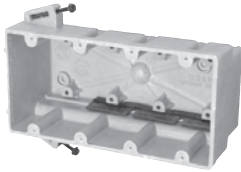
Cu. In. Volume	Catalog Number	Component Description	D	W	H	UPC# 85339	Std. Pkg. Qty.	Std. Pkg. Wt. (lb.)
60.0	4300-N	Angled mid-nails, Speed Klamps™-bulk packed	3	7-1/2	3-3/4	16225	20	18
60.0	4300-NC4	Angled mid-nails, 4 wire clamps-factory installed	3	7-1/2	3-3/4	16245	20	20
60.0	4300-NK*	Angled mid-nails, Speed Klamps™-factory installed	3	7-1/2	3-3/4	16226	20	19

### Series 4300-NB



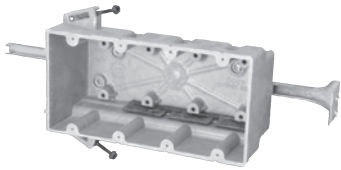
Cu. In. Volume	Catalog Number	Component Description	D	W	H	UPC# 85339	Std. Pkg. Qty.	Std. Pkg. Wt. (lb.)
60.0	4300-NB	Angled mid-nails, adj. stabilizing bar, Speed Klamps™-bulk packed	3	7-1/2	3-3/4	16270	20	25
60.0	4300-NBC4	Angled mid-nails, adj. stabilizing bar, 4 wire clamps-factory installed	3	7-1/2	3-3/4	16290	20	26
60.0	4300-NBK*	Angled mid-nails, adj. stabilizing bar, Speed Klamps™-factory installed	3	7-1/2	3-3/4	16271	20	25

### Series 4300-SS



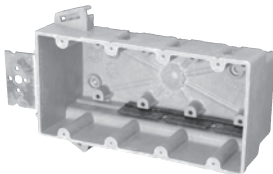
Cu. In. Volume	Catalog Number	Component Description	D	W	H	UPC# 85339	Std. Pkg. Qty.	Std. Pkg. Wt. (lb.)
60.0	4300-SS	Steel stud screws for use with non-load bearing studs 22 gauge or lighter, Speed Klamps™-bulk packed	3	7-1/2	3-3/4	16233	20	20
60.0	4300-SSK*	Steel stud screws for use with non-load bearing studs 22 gauge or lighter, Speed Klamps™-factory installed	3	7-1/2	3-3/4	16232	20	21

### Series 4300-SSB



Cu. In. Volume	Catalog Number	Component Description	D	W	H	UPC# 85339	Std. Pkg. Qty.	Std. Pkg. Wt. (lb.)
60.0	4300-SSB	Steel stud screws for use with non-load bearing studs 22 gauge or lighter, adj. stabilizing bar, Speed Klamps™-bulk packed	3	7-1/2	3-3/4	16229	20	26
60.0	4300-SSBK*	Steel stud screws for use with non-load bearing studs 22 gauge or lighter, adj. stabilizing bar, Speed Klamps™-factory installed	3	7-1/2	3-3/4	16234	20	27

### Series 4300-Z2



Cu. In. Volume	Catalog Number	Component Description	D	W	H	UPC# 85339	Std. Pkg. Qty.	Std. Pkg. Wt. (lb.)
60.0	4300-Z2	1/4" offset, "Z" hanger, Speed Klamps™-bulk packed	3	7-1/2	3-3/4	16725	12	14
60.0	4300-Z2K*	1/4" offset, "Z" hanger, Speed Klamps™-factory installed	3	7-1/2	3-3/4	16906	12	14

\* Indicates model shown • See page 7 for Attachment Coding descriptions

