



Catalog Number: 4460-GSC3R-NK
Item Description: N3R SCREW CVR GUTTER NK
UPC Code: 784572106673

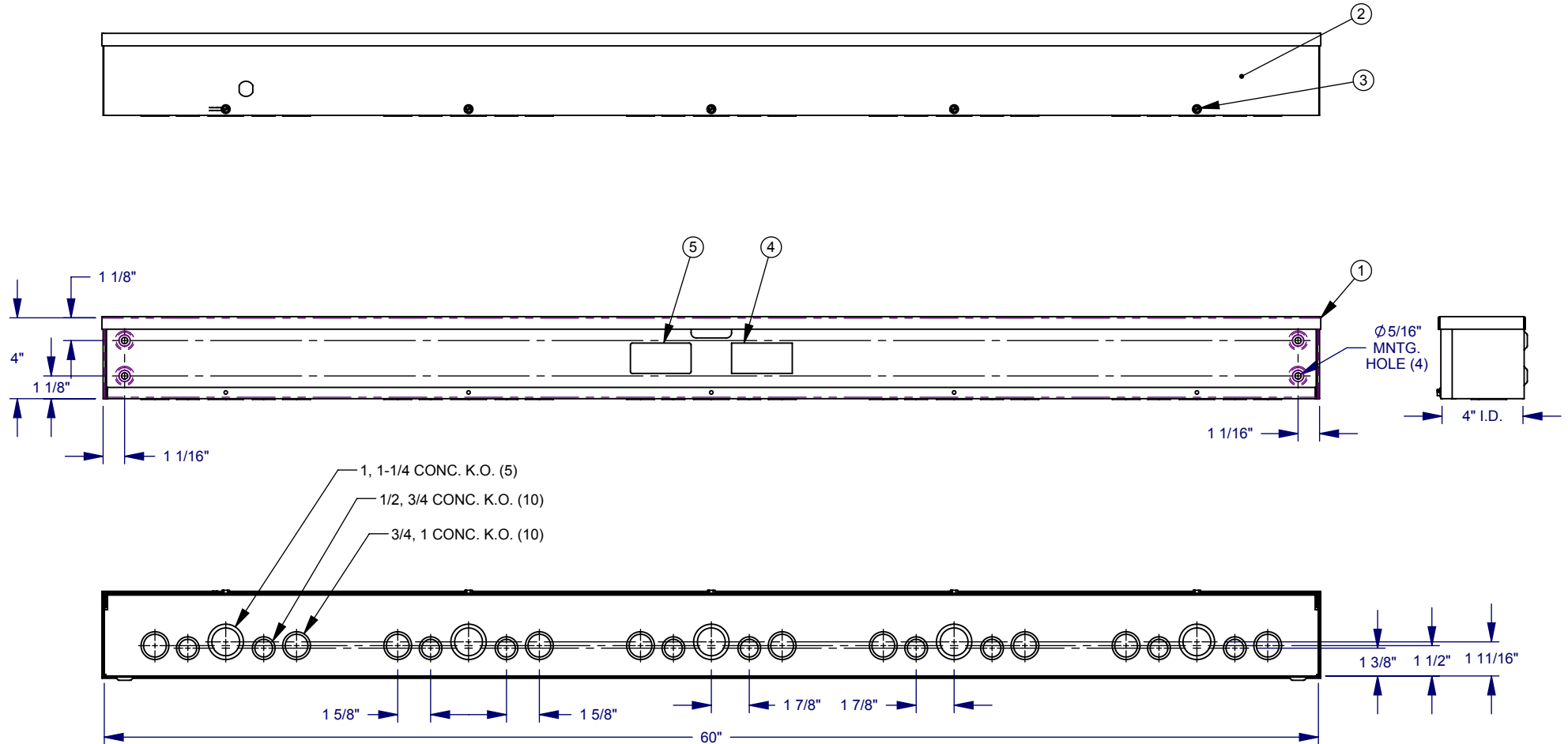
Brand Name: Milbank
Type: Wiring Trough
Special Features: Key Locking Cylinder Latch Provision,
Sealing Eye Lance
Application: Wireway
Standard: UL Listed, Type 3R
Cover Type: Screw Cover
Enclosure: Outdoor Enclosure
Nominal Cross Section: 4x4
Straight Section
Length: 60
Material: Steel with Powder Coat Finish
Finish: ANSI 61 Gray
Knockouts: False




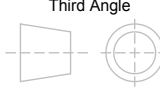
Utility requirements may vary. Always consult the serving utility for their requirements prior to ordering or installing this equipment. This product must always be installed by a licensed electrician. Installation of this equipment may require local electrical inspector approval.

CAT. NO.	U/L LABEL
4460-GSC3R-()	1002943
RC-4460-GSC3R-()	1125051
SPRSCG-4460-()	1132575

ITEM	QTY.	PART NUMBER	DESCRIPTION
1	1	(SEE CHART)	BACK WELDMENT
2	1	(SEE CHART)	FRONT
3	5	1001290	SCREW, 10-32 X 5/16
4	1	1002898	LABEL, RATING 4x4 GSC3R
5	1	(SEE CHART)	UL LABEL, WIREWAY



SUFFIX	FINISH	BACK WELDMENT	FRONT NO.	INSTALL K.O.s
NONE	MILBANK LIGHT GRAY	1153005	1164989	YES
-NP	NONE	1164871	1010772	
-NK	MILBANK LIGHT GRAY	1153016	1164989	NO
-NK-NP	NONE	1164872	1010772	

Material:		16 GA. GALV. STEEL			General Offices:		Kansas City, MO		
Shear/ Die#:					Title:	SCREW COVER WIREWAY NEMA TYPE 3R			
Finish:		SEE CHART							
Part Wt.:									
Tolerances:		Third Angle			Catalog No.:		(SEE CHART)		
Unless Specified Otherwise					Customer:				
X.X		±.1							
X.XX		±.03							
X.XXX		±.015							
X*		±2*							
Scale:		NTS		Checked By:				1003666	
Drawn By:		D.F.		Approved By:					
				Date:		5/11/11		Sheet	1 of 1

REV.	DATE	DESCRIPTION	BY
B3	5/11/11	REDRAW INTO SOLIDWORKS; UPDATE K.O. PATTERN; CHART -NK VERSION (ECO #20576)	D.F.
B4	5/24/13	CHART FINISH (ECO #23988)	D.F.
B5	6/6/13	CHART: 1164989 WAS 1010772, 1010772 WAS 1010761 (ECO #24050)	D.F.



Catalog Number: 4460-GSC3R-NK
Item Description: N3R SCREW CVR GUTTER NK
UPC Code: 784572106673

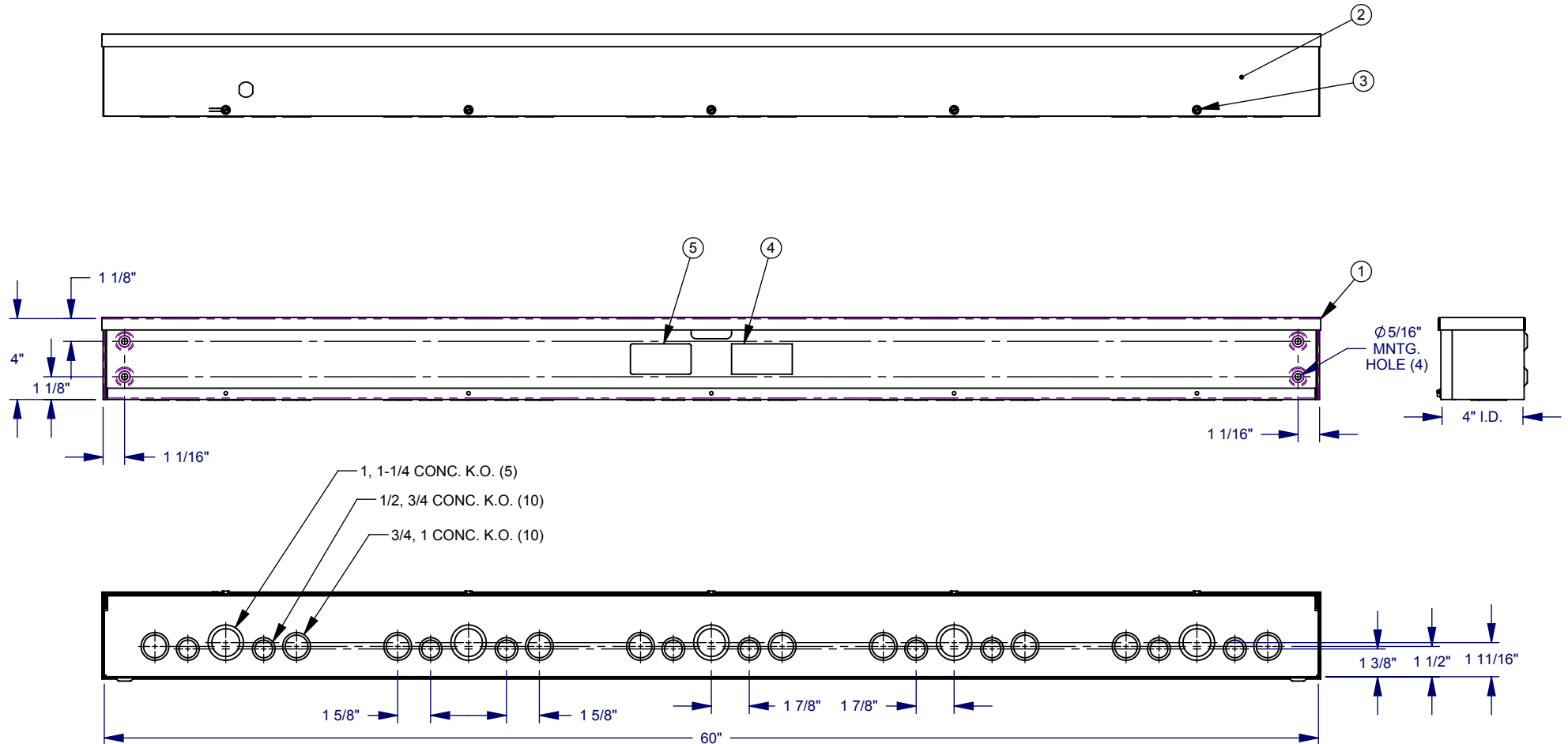
Brand Name: Milbank
Type: Wiring Trough
Special Features: Key Locking Cylinder Latch Provision,
Sealing Eye Lance
Application: Wireway
Standard: UL Listed, Type 3R
Cover Type: Screw Cover
Enclosure: Outdoor Enclosure
Nominal Cross Section: 4x4
Straight Section Length: 60
Material: Steel with Powder Coat Finish
Finish: ANSI 61 Gray
Knockouts: False




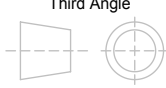
Utility requirements may vary. Always consult the serving utility for their requirements prior to ordering or installing this equipment. This product must always be installed by a licensed electrician. Installation of this equipment may require local electrical inspector approval.

CAT. NO.	U/L LABEL
4460-GSC3R-()	1002943
RC-4460-GSC3R-()	1125051
SPRSCG-4460-()	1132575

ITEM	QTY.	PART NUMBER	DESCRIPTION
1	1	(SEE CHART)	BACK WELDMENT
2	1	(SEE CHART)	FRONT
3	5	1001290	SCREW, 10-32 X 5/16
4	1	1002898	LABEL, RATING 4x4 GSC3R
5	1	(SEE CHART)	UL LABEL, WIREWAY



SUFFIX	FINISH	BACK WELDMENT	FRONT NO.	INSTALL K.O.s
NONE	MILBANK LIGHT GRAY	1153005	1164989	YES
-NP	NONE	1164871	1010772	
-NK	MILBANK LIGHT GRAY	1153016	1164989	NO
-NK-NP	NONE	1164872	1010772	

Material:		16 GA. GALV. STEEL			General Offices:		Kansas City, MO					
Shear/ Die#:					Title:	SCREW COVER WIREWAY NEMA TYPE 3R						
Finish:		SEE CHART				Catalog No.:			(SEE CHART)			
Part Wt.:									Customer:			
Tolerances:		Third Angle			Drawing No.:		1003666					
Unless Specified Otherwise					Date:		5/11/11		Sheet		1 of 1	
X.X		±.1			Drawn By:		D.F.		Approved By:			
X.XX		±.03										
X.XXX		±.015										
X*		±2*										

REV.	DATE	DESCRIPTION	BY
B3	5/11/11	REDRAW INTO SOLIDWORKS; UPDATE K.O. PATTERN; CHART -NK VERSION (ECO #20576)	D.F.
B4	5/24/13	CHART FINISH (ECO #23988)	D.F.
B5	6/6/13	CHART: 1164989 WAS 1010772, 1010772 WAS 1010761 (ECO #24050)	D.F.