



ELLIOTT ELECTRIC SUPPLY

We Deliver...Lower Cost, Quality Products, & Personal Service

3804 South Street
75964-7263, TX Nacogdoches
Phone: 936-569-7941
Fax: 936-560-4685



450G 1 1/4 and 1 1/2 Series 5 Cover Alum With GSKT *Crouse-Hinds*

| | |
|------------------|--|
| Catalog Number | 450G |
| Manufacturer | Crouse-Hinds |
| Description | Aluminum Cover With Neoprene Integral Gasket, 1-1/4 to 1-1/2 In (Trade), Gray, Powder Paint, 0.1800 LB |
| Weight per unit | 0.1800 (lbs/each) |
| Product Category | Wall Plates & Covers |

Features

| | |
|------------|----------------------|
| connection | Threaded / Set Screw |
| Form | Series 5 |

Material, Color, and Finish

| | |
|-------|--------|
| Color | Gray 0 |
|-------|--------|

Dimensions and Weight

| | |
|----------|-------------|
| Hub Size | 1.25/1.5 in |
|----------|-------------|

Descriptions

| | |
|-------------|---|
| Description | 1 1/4 AND 1 1/2 SERIES 5 COVER ALUM WITH GSKT |
|-------------|---|

Manufacturer Information

| | |
|-----------|---------------------------|
| Brand | EATON CROUSE-HINDS SERIES |
| GTIN | 00662277004442 |
| sub brand | Condulet |
| UPC | 662277004442 |

Taxonomies, Classifications, and Categories

| | |
|----------------------|-------------------------------------|
| Category Description | FORM 5 CONDULETS, COVERS, & GASKETS |
| Type | Conduit Body Cover |

Packaging

| | |
|-----------------|------|
| Carton | 50 |
| Weight Per each | 0.18 |

Uses, Certifications, and Standards

| | |
|-------------------|--------------------|
| Enclosure | Condulet |
| Mounting standard | Conduit UL, cUL |

Series 5

Die Cast Aluminum Conduit Outlet Bodies, Covers & Gaskets

Series 5 die cast copper-free aluminum conduit bodies, covers and gaskets are available for use with rigid or EMT conduit (with set screw). Conduit bodies are available in trade sizes 1/2" to 4", in the most popular conduit body shapes (C, LB, LL, LR, T) and 1/2" to 2" in TB and X shapes. The Series 5 family is available as components or pre-packaged in various configurations as a SnapPack™ assembly. In addition, Series 5 is completely interchangeable with other manufacturers.

Applications:

- Act as pull outlets for conductors being installed
- Provide openings for making splices and taps in conductors
- Act as mounting outlets for lighting fixtures and wiring devices
- Connect conduit sections
- Provide taps for branch conduit runs
- Make 90° bends in conduit runs
- Provide for access to conductors for maintenance and future system changes

Features:

- Die cast copper-free aluminum construction is lightweight and corrosion-resistant for long, reliable service
- Epoxy powder coat finish provides additional corrosion resistance and an aesthetically-pleasing appearance
- Conduit bodies are supplied with threaded hubs for use with rigid/IMC conduit or as a combination body
- Combination bodies are supplied with tri-head set screws (slotted, Phillips, Robertson) for use with EMT or rigid/IMC conduit on trade sizes 1/2" to 2"
- Domed aluminum cover provides additional cubic capacity
- Perforated center gasket that can be easily removed, if desired
- SnapPack™ available in choice of three configurations to match customer preferences

Certifications and Compliances:

- UL Listed
- cUL Listed
- UL File No. E-15022
- Suitable for wet locations (1/2" to 2" rigid bodies)
- Suitable for NEMA 4 (1/2" to 1" rigid bodies with integral gasket cover)

Standard Materials and Finishes:

- Bodies – copper-free aluminum with epoxy powder paint
- Covers – aluminum with stainless steel screws, natural
- Gaskets – neoprene, natural



Series 5

Integral gasket covers. The sheet aluminum covers feature a raised dome with stainless steel screws supplied with nylon washers and a gasket for simplifying installation—reducing inventory and labor costs. These innovative covers are UL and cUL Listed and are NEMA 4 rated 1/2" to 1" trade sizes with rigid bodies.



SnapPack™. Designed for ordering and receiving convenience, the SnapPack combines a body, gasket and sheet aluminum cover in a single assembly.

1 Rigid body with traditional cover and gasket (e.g. LB15 CGN)



2 Combination body with traditional cover and gasket (e.g. LB15 MTC)

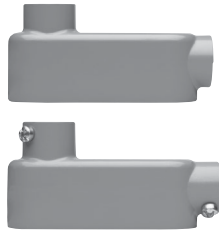


3 **NEMA 4** rigid body with integral gasketed cover (e.g. X15 ICG)



Series 5

Die Cast Aluminum Conduit Outlet Bodies, Covers & Gaskets



Series 5

TYPE LB

| Outlet Body | | | SnapPack | | | Internal Vol. in Cu. In. | Unit Qty. | Wt. Lbs. Per 100* | Max. No. of Conductors |
|-------------|------------------|-----------------------------|---|--|---|--------------------------|-----------|-------------------|------------------------|
| Size | Cat. # Rigid/IMC | Cat. # Combo EMT, Rigid/IMC | Cat. # Rigid/IMC Body, Traditional Cover & Gasket | Cat. # Combo EMT, Body, Traditional Cover & Gasket | Cat. # NEMA 4 Rigid/IMC Body, Integral Cover & Gasket | | | | |
| 1/2" | LB15 | LB15 MT | LB15 CGN | LB15 MTC | LB15 ICG (4.5 Cu. In.) | 4.35 | 10 | 26 | - |
| 3/4" | LB25 | LB25 MT | LB25 CGN | LB25 MTC | LB25 ICG (7.5 Cu. In.) | 7.30 | 10 | 48 | #6 AWG |
| 1" | LB35 | LB35 MT | LB35 CGN | LB35 MTC | LB35 ICG (10.8 Cu. In.) | 12.20 | 5 | 64 | 3 #4 AWG |
| 1 1/4" | LB45 | LB45 MT | LB45 CGN | LB45 MTC | - | 32.30 | 2 | 140 | 3 #2 AWG |
| 1 1/2" | LB55 | LB55 MT | LB55 CGN | LB55 MTC | - | 33.80 | 2 | 160 | 3 #1/0 AWG |
| 2" | LB65 | LB65 MT | LB65 CGN | LB65 MTC | - | 71.20 | 1 | 260 | 3 #3/0 AWG |
| 2 1/2" | LB75 | LB75 MT† | LB75 CGN | LB75 MTC | - | 71.20 | 1 | 500 | 3 #300MCM |
| 3" | LB85 | LB85 MT† | LB85 CGN | LB85 MTC | - | 183.50 | 1 | 600 | 3 #300MCM |
| 3 1/2" | LB95 | LB95 MT† | LB95 CGN | LB95 MTC | - | 304.90 | 1 | 900 | 3 #400MCM |
| 4" | LB105 | LB105 MT† | LB105 CGN | LB105 MTC | - | 308.00 | 1 | 1000 | 3 #400MCM |

*Weight lbs. per 100 is listed for outlet body only.

†Combo EMT, rigid/IMC fittings greater than 2" trade size are SET SCREW ONLY (not combination threaded and set screw).



TYPE LR

| Outlet Body | | | SnapPack | | | Internal Vol. in Cu. In. | Unit Qty. | Wt. Lbs. Per 100* | Max. No. of Conductors |
|-------------|------------------|-----------------------------|---|--|---|--------------------------|-----------|-------------------|------------------------|
| Size | Cat. # Rigid/IMC | Cat. # Combo EMT, Rigid/IMC | Cat. # Rigid/IMC Body, Traditional Cover & Gasket | Cat. # Combo EMT, Body, Traditional Cover & Gasket | Cat. # NEMA 4 Rigid/IMC Body, Integral Cover & Gasket | | | | |
| 1/2" | LR15 | LR15 MT | LR15 CGN | LR15 MTC | LR15 ICG (4.5 Cu. In.) | 4.35 | 10 | 26 | - |
| 3/4" | LR25 | LR25 MT | LR25 CGN | LR25 MTC | LR25 ICG (7.5 Cu. In.) | 7.30 | 10 | 48 | #6 AWG |
| 1" | LR35 | LR35 MT | LR35 CGN | LR35 MTC | LR35 ICG (10.8 Cu. In.) | 12.20 | 5 | 64 | 3 #4 AWG |
| 1 1/4" | LR45 | LR45 MT | LR45 CGN | LR45 MTC | - | 35.80 | 2 | 140 | 3 #2 AWG |
| 1 1/2" | LR55 | LR55 MT | LR55 CGN | LR55 MTC | - | 35.80 | 2 | 160 | 3 #1/0 AWG |
| 2" | LR65 | LR65 MT | LR65 CGN | LR65 MTC | - | 69.70 | 1 | 260 | 3 #3/0 AWG |
| 2 1/2" | LR75 | - | LR75 CGN | - | - | 69.70 | 1 | 500 | 3 #300MCM |
| 3" | LR85 | - | LR85 CGN | - | - | 186.00 | 1 | 600 | 3 #350MCM |
| 3 1/2" | LR95 | - | LR95 CGN | - | - | 306.00 | 1 | 900 | 3 #350MCM |
| 4" | LR105 | - | LR105 CGN | - | - | 308.00 | 1 | 1000 | 3 #350MCM |

*Weight lbs. per 100 is listed for outlet body only.

Series 5

Die Cast Aluminum Conduit Outlet Bodies, Covers & Gaskets



TYPE LL

| Size | Outlet Body | | SnapPack | | | Internal Vol. in Cu. In. | Unit Qty. | Wt. Lbs. Per 100* | Max. No. of Conductors |
|--------|------------------|-----------------------------|---|--|---|--------------------------|-----------|-------------------|------------------------|
| | Cat. # Rigid/IMC | Cat. # Combo EMT, Rigid/IMC | Cat. # Rigid/IMC Body, Traditional Cover & Gasket | Cat. # Combo EMT, Body, Traditional Cover & Gasket | Cat. # NEMA 4 Rigid/IMC Body, Integral Cover & Gasket | | | | |
| 1/2" | LL15 | LL15 MT | LL15 CGN | LL15 MTC | LL15 ICG (4.5 Cu. In.) | 4.35 | 10 | 30 | - |
| 3/4" | LL25 | LL25 MT | LL25 CGN | LL25 MTC | LL25 ICG (7.5 Cu. In.) | 7.30 | 10 | 48 | #6 AWG |
| 1" | LL35 | LL35 MT | LL35 CGN | LL35 MTC | LL35 ICG (10.8 Cu. In.) | 12.20 | 5 | 64 | 3 #4 AWG |
| 1 1/4" | LL45 | LL45 MT | LL45 CGN | LL45 MTC | - | 35.80 | 2 | 140 | 3 #2 AWG |
| 1 1/2" | LL55 | LL55 MT | LL55 CGN | LL55 MTC | - | 35.80 | 2 | 160 | 3 #1/0 AWG |
| 2" | LL65 | LL65 MT | LL65 CGN | LL65 MTC | - | 69.70 | 1 | 270 | 3 #3/0 AWG |
| 2 1/2" | LL75 | - | LL75 CGN | - | - | 69.70 | 1 | 500 | 3 #300MCM |
| 3" | LL85 | - | LL85 CGN | - | - | 186.00 | 1 | 600 | 3 #350MCM |
| 3 1/2" | LL95 | - | LL95 CGN | - | - | 306.00 | 1 | 900 | 3 #350MCM |
| 4" | LL105 | - | LL105 CGN | - | - | 308.00 | 1 | 1000 | 3 #350MCM |

*Weight lbs. per 100 is listed for outlet body only.



TYPE C

| Size | Outlet Body | | SnapPack | | | Internal Vol. in Cu. In. | Unit Qty. | Wt. Lbs. Per 100* | Max. No. of Conductors |
|--------|------------------|-----------------------------|---|--|---|--------------------------|-----------|-------------------|------------------------|
| | Cat. # Rigid/IMC | Cat. # Combo EMT, Rigid/IMC | Cat. # Rigid/IMC Body, Traditional Cover & Gasket | Cat. # Combo EMT, Body, Traditional Cover & Gasket | Cat. # NEMA 4 Rigid/IMC Body, Integral Cover & Gasket | | | | |
| 1/2" | C15 | C15 MT | C15 CGN | C15 MTC | C15 ICG (4.5 Cu. In.) | 4.35 | 10 | 27 | - |
| 3/4" | C25 | C25 MT | C25 CGN | C25 MTC | C25 ICG (7.5 Cu. In.) | 7.30 | 10 | 40 | #6 AWG |
| 1" | C35 | C35 MT | C35 CGN | C35 MTC | C35 ICG (10.8 Cu. In.) | 12.20 | 5 | 64 | 3 #4 AWG |
| 1 1/4" | C45 | C45 MT | C45 CGN | C45 MTC | - | 32.30 | 2 | 165 | 3 #2 AWG |
| 1 1/2" | C55 | C55 MT | C55 CGN | C55 MTC | - | 33.80 | 2 | 150 | 3 #1/0 AWG |
| 2" | C65 | C65 MT | C65 CGN | C65 MTC | - | 69.50 | 1 | 270 | 3 #2/0 AWG |
| 2 1/2" | C75 | - | C75 CGN | - | - | 69.50 | 1 | 500 | 3 #250MCM |
| 3" | C85 | - | C85 CGN | - | - | 188.00 | 1 | 600 | 3 #250MCM |
| 3 1/2" | C95 | - | C95 CGN | - | - | 307.00 | 1 | 900 | 3 #300MCM |
| 4" | C105 | - | C105 CGN | - | - | 309.00 | 1 | 1000 | 3 #300MCM |

*Weight lbs. per 100 is listed for outlet body only.

Series 5

Die Cast Aluminum Conduit Outlet Bodies, Covers & Gaskets



TYPE T

| Size | Outlet Body | | SnapPack | | | Internal Vol. in Cu. In. | Unit Qty. | Wt. Lbs. Per 100* | Max. No. of Conductors |
|--------|------------------|-----------------------------|---|--|---|--------------------------|-----------|-------------------|------------------------|
| | Cat. # Rigid/IMC | Cat. # Combo EMT, Rigid/IMC | Cat. # Rigid/IMC Body, Traditional Cover & Gasket | Cat. # Combo EMT, Body, Traditional Cover & Gasket | Cat. # NEMA 4 Rigid/IMC Body, Integral Cover & Gasket | | | | |
| 1/2" | T15 | T15 MT | T15 CGN | T15 MTC | T15 ICG (4.5 Cu. In.) | 4.35 | 10 | 27 | - |
| 3/4" | T25 | T25 MT | T25 CGN | T25 MTC | T25 ICG (7.5 Cu. In.) | 7.30 | 10 | 40 | #6 AWG |
| 1" | T35 | T35 MT | T35 CGN | T35 MTC | T35 ICG (10.8 Cu. In.) | 12.20 | 5 | 64 | 3 #4 AWG |
| 1 1/4" | T45 | T45 MT | T45 CGN | T45 MTC | - | 33.10 | 2 | 165 | 3 #2 AWG |
| 1 1/2" | T55 | T55 MT | T55 CGN | T55 MTC | - | 33.10 | 2 | 150 | 3 #2 AWG |
| 2" | T65 | T65 MT | T65 CGN | T65 MTC | - | 67.00 | 1 | 270 | 3 #1 AWG |
| 2 1/2" | T75 | - | T75 CGN | - | - | 67.00 | 1 | 500 | 3 #3/0 AWG |
| 3" | T85 | - | T85 CGN | - | - | 175.00 | 1 | 600 | 3 #3/0 AWG |
| 3 1/2" | T95 | - | T95 CGN | - | - | 298.00 | 1 | 900 | 3 #4/0 AWG |
| 4" | T105 | - | T105 CGN | - | - | 300.00 | 1 | 1000 | 3 #4/0 AWG |

*Weight lbs. per 100 is listed for outlet body only.



TYPE TB

| Size | Outlet Body | | SnapPack | | | Internal Vol. in Cu. In. | Unit Qty. | Wt. Lbs. Per 100* | Max. No. of Conductors |
|--------|------------------|-----------------------------|---|--|---|--------------------------|-----------|-------------------|------------------------|
| | Cat. # Rigid/IMC | Cat. # Combo EMT, Rigid/IMC | Cat. # Rigid/IMC Body, Traditional Cover & Gasket | Cat. # Combo EMT, Body, Traditional Cover & Gasket | Cat. # NEMA 4 Rigid/IMC Body, Integral Cover & Gasket | | | | |
| 1/2" | TB15 | - | - | - | TB15 ICG (4.5 Cu. In.) | 4.50 | 10 | 29 | - |
| 3/4" | TB25 | - | - | - | TB25 ICG (7.5 Cu. In.) | 7.50 | 10 | 42 | 3 #6 AWG |
| 1" | TB35 | - | - | - | TB35 ICG (10.8 Cu. In.) | 10.80 | 5 | 58 | 3 #4 AWG |
| 1 1/4" | TB45 | - | - | - | - | 32.30 | 2 | 110 | 3 #2 AWG |
| 1 1/2" | TB55 | - | - | - | - | 34.20 | 2 | 109 | 3 #2 AWG |
| 2" | TB65 | - | - | - | - | 71.40 | 1 | 192 | 3 #2/0 AWG |

*Weight lbs. per 100 is listed for outlet body only.



TYPE X

| Size | Outlet Body | | SnapPack | | | Internal Vol. in Cu. In. | Unit Qty. | Wt. Lbs. Per 100* | Max. No. of Conductors |
|--------|------------------|-----------------------------|---|--|---|--------------------------|-----------|-------------------|------------------------|
| | Cat. # Rigid/IMC | Cat. # Combo EMT, Rigid/IMC | Cat. # Rigid/IMC Body, Traditional Cover & Gasket | Cat. # Combo EMT, Body, Traditional Cover & Gasket | Cat. # NEMA 4 Rigid/IMC Body, Integral Cover & Gasket | | | | |
| 1/2" | X15 | - | - | - | X15 ICG (4.5 Cu. In.) | 4.50 | 10 | 31 | - |
| 3/4" | X25 | - | - | - | X25 ICG (7.5 Cu. In.) | 7.50 | 10 | 47 | 3 #6 AWG |
| 1" | X35 | - | - | - | X35 ICG (10.8 Cu. In.) | 10.80 | 5 | 62 | 3 #4 AWG |
| 1 1/4" | X45 | - | - | - | - | 32.30 | 2 | 118 | 3 #2 AWG |
| 1 1/2" | X55 | - | - | - | - | 34.20 | 2 | 118 | 3 #2 AWG |
| 2" | X65 | - | - | - | - | 71.40 | 1 | 213 | 3 #2/0 AWG |

*Weight lbs. per 100 is listed for outlet body only.

Series 5

Die Cast Aluminum Conduit Outlet Bodies, Covers & Gaskets

INTEGRAL GASKET COVERS

Aluminum Cover with Neoprene Integral Gasket

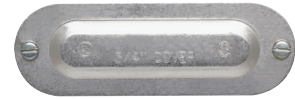


| Size | Cat. # | Unit Qty. | Wt. Lbs. Per 100 |
|-----------------|--------|-----------|------------------|
| 1/2" | 150G | 50 | 6 |
| 3/4" | 250G | 50 | 7 |
| 1" | 350G | 50 | 8 |
| 1 1/4" - 1 1/2" | 450G | 50 | 17 |
| 2" | 650G | 25 | 26 |
| 2 1/2" - 3" | 850G | 10 | 80 |
| 3 1/2" - 4" | 950G | 10 | 145 |

1/2" - 3" are NEMA 4 rated.

ALUMINUM COVERS

Aluminum



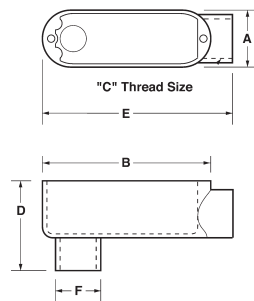
| Size | Cat. # | Unit Qty. | Wt. Lbs. Per 100 |
|-----------------|--------|-----------|------------------|
| 1/2" | 150 | 50 | 5 |
| 3/4" | 250 | 50 | 6 |
| 1" | 350 | 50 | 7 |
| 1 1/4" - 1 1/2" | 450 | 50 | 15 |
| 2" | 650 | 25 | 24 |
| 2 1/2" - 3" | 850D | 10 | 78 |
| 3 1/2" - 4" | 950D | 10 | 140 |

GASKETS

Neoprene

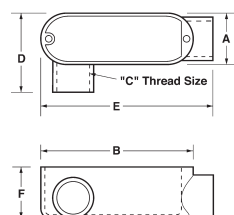


| Size | Cat. # | Unit Qty. | Wt. Lbs. Per 100 |
|-----------------|----------|-----------|------------------|
| 1/2" | GASK015N | 50 | 2 |
| 3/4" | GASK025N | 50 | 2 |
| 1" | GASK035N | 50 | 3 |
| 1 1/4" - 1 1/2" | GASK045N | 50 | 6 |
| 2" | GASK065N | 25 | 10 |
| 2 1/2" - 3" | GASK085N | 10 | 20 |
| 3 1/2" - 4" | GASK095N | 10 | 30 |



Type LB Dimensions (in Inches) – Threaded & Set Screw:

| Size | A | B | C | D | E | F |
|--------|------|-------|------|------|-------|------|
| 1/2" | 1.31 | 3.87 | 0.50 | 2.11 | 4.24 | 1.07 |
| 3/4" | 1.53 | 4.67 | 0.75 | 2.38 | 4.97 | 1.28 |
| 1" | 1.74 | 5.37 | 1.00 | 2.74 | 5.79 | 1.56 |
| 1 1/4" | 2.49 | 7.23 | 1.25 | 3.50 | 7.79 | 1.99 |
| 1 1/2" | 2.49 | 7.23 | 1.50 | 3.65 | 7.81 | 2.27 |
| 2" | 3.10 | 9.46 | 2.00 | 4.24 | 10.20 | 2.91 |
| 2 1/2" | 4.44 | 12.22 | 2.50 | 5.75 | 13.14 | 3.43 |
| 3" | 4.44 | 12.22 | 3.00 | 6.41 | 13.14 | 4.13 |
| 3 1/2" | 5.42 | 14.83 | 3.50 | 7.11 | 15.46 | 4.65 |
| 4" | 5.42 | 14.83 | 4.00 | 7.20 | 15.46 | 5.16 |



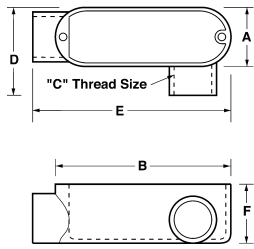
Type LR Dimensions (in Inches) – Threaded & Set Screw:

| Size | A | B | C | D | E | F |
|--------|------|-------|------|------|-------|------|
| 1/2" | 1.31 | 3.87 | 0.50 | 2.06 | 4.40 | 1.40 |
| 3/4" | 1.53 | 4.67 | 0.75 | 2.28 | 5.07 | 1.64 |
| 1" | 1.74 | 5.37 | 1.00 | 2.51 | 5.94 | 1.90 |
| 1 1/4" | 2.49 | 7.23 | 1.25 | 3.50 | 7.87 | 2.85 |
| 1 1/2" | 2.49 | 7.23 | 1.50 | 3.50 | 7.87 | 2.85 |
| 2" | 3.10 | 9.46 | 2.00 | 3.83 | 9.88 | 3.41 |
| 2 1/2" | 4.50 | 12.22 | 2.50 | 6.00 | 13.14 | 4.00 |
| 3" | 4.65 | 12.22 | 3.00 | 6.10 | 13.00 | 4.70 |
| 3 1/2" | 5.42 | 14.83 | 3.50 | 6.40 | 15.45 | 5.43 |
| 4" | 5.42 | 14.83 | 4.00 | 6.40 | 15.45 | 5.43 |

Series 5

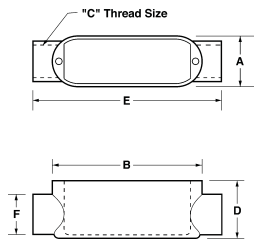
Die Cast Aluminum Conduit Outlet Bodies, Covers & Gaskets

Series 5



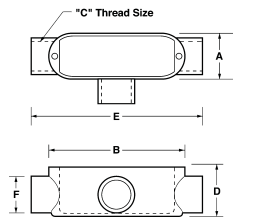
Type LL Dimensions (in Inches) – Threaded & Set Screw:

| Size | A | B | C | D | E | F |
|--------|------|-------|------|------|-------|------|
| 1/2" | 1.31 | 3.87 | 0.50 | 2.06 | 4.40 | 1.40 |
| 3/4" | 1.53 | 4.67 | 0.75 | 2.28 | 5.07 | 1.64 |
| 1" | 1.74 | 5.37 | 1.00 | 2.68 | 5.94 | 1.90 |
| 1 1/4" | 2.49 | 7.23 | 1.25 | 3.50 | 7.87 | 2.85 |
| 1 1/2" | 2.49 | 7.23 | 1.50 | 3.50 | 7.87 | 2.85 |
| 2" | 3.10 | 9.46 | 2.00 | 3.83 | 10.20 | 3.41 |
| 2 1/2" | 4.50 | 12.22 | 2.50 | 6.00 | 13.14 | 4.00 |
| 3" | 4.65 | 12.22 | 3.00 | 6.10 | 13.00 | 4.70 |
| 3 1/2" | 5.42 | 14.83 | 3.50 | 6.05 | 15.35 | 5.43 |
| 4" | 5.42 | 14.83 | 4.00 | 6.05 | 15.35 | 5.43 |



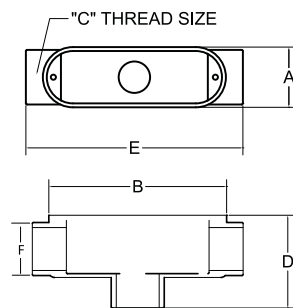
Type C Dimensions (in Inches) – Threaded & Set Screw:

| Size | A | B | C | D | E | F |
|--------|------|-------|------|------|-------|------|
| 1/2" | 1.31 | 3.87 | 0.50 | 1.40 | 4.82 | 1.07 |
| 3/4" | 1.53 | 4.67 | 0.75 | 1.64 | 5.50 | 1.35 |
| 1" | 1.74 | 5.37 | 1.00 | 1.90 | 6.44 | 1.67 |
| 1 1/4" | 2.49 | 7.23 | 1.25 | 2.73 | 8.45 | 2.27 |
| 1 1/2" | 2.49 | 7.23 | 1.50 | 2.73 | 8.45 | 2.27 |
| 2" | 3.10 | 9.46 | 2.00 | 3.41 | 10.71 | 2.91 |
| 2 1/2" | 4.50 | 12.22 | 2.50 | 4.30 | 14.00 | 3.50 |
| 3" | 4.65 | 12.22 | 3.00 | 4.66 | 13.80 | 4.13 |
| 3 1/2" | 5.42 | 14.83 | 3.50 | 5.36 | 16.10 | 5.30 |
| 4" | 5.42 | 14.83 | 4.00 | 5.36 | 16.10 | 5.30 |



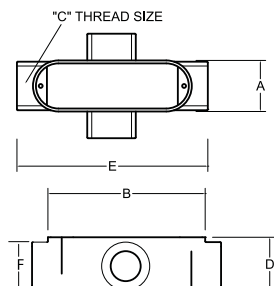
Type T Dimensions (in Inches) – Threaded & Set Screw:

| Size | A | B | C | D | E | F |
|--------|------|-------|------|------|-------|------|
| 1/2" | 1.31 | 3.87 | 0.50 | 1.40 | 4.82 | 1.07 |
| 3/4" | 1.53 | 4.67 | 0.75 | 1.64 | 5.40 | 1.35 |
| 1" | 1.74 | 5.37 | 1.00 | 1.90 | 6.33 | 1.15 |
| 1 1/4" | 2.49 | 7.23 | 1.25 | 2.73 | 8.45 | 2.27 |
| 1 1/2" | 2.49 | 7.23 | 1.50 | 2.73 | 8.45 | 2.27 |
| 2" | 3.10 | 9.46 | 2.00 | 3.41 | 10.71 | 2.91 |
| 2 1/2" | 4.50 | 12.22 | 2.50 | 4.00 | 14.00 | 3.50 |
| 3" | 4.65 | 12.22 | 3.00 | 4.66 | 13.80 | 4.13 |
| 3 1/2" | 5.42 | 14.83 | 3.50 | 5.40 | 16.00 | 5.30 |
| 4" | 5.42 | 14.83 | 4.00 | 5.40 | 16.00 | 5.30 |



Type TB Dimensions (in Inches) – Threaded & Set Screw:

| Size | A | B | C | D | E | F |
|--------|------|------|------|------|-------|------|
| 1/2" | 1.31 | 3.92 | 0.50 | 2.10 | 4.72 | 1.07 |
| 3/4" | 1.53 | 4.64 | 0.75 | 2.40 | 5.51 | 1.28 |
| 1" | 1.74 | 5.38 | 1.00 | 2.77 | 6.47 | 1.56 |
| 1 1/4" | 2.49 | 7.24 | 1.25 | 3.53 | 8.25 | 1.99 |
| 1 1/2" | 2.49 | 7.24 | 1.50 | 3.53 | 8.25 | 2.27 |
| 2" | 3.10 | 9.50 | 2.00 | 4.50 | 10.50 | 2.91 |



Type X Dimensions (in Inches) – Threaded & Set Screw:

| Size | A | B | C | D | E | F |
|--------|------|------|------|------|-------|------|
| 1/2" | 1.31 | 3.92 | 0.50 | 1.37 | 4.72 | 1.07 |
| 3/4" | 1.53 | 4.64 | 0.75 | 1.63 | 5.51 | 1.28 |
| 1" | 1.74 | 5.38 | 1.00 | 1.88 | 6.47 | 1.56 |
| 1 1/4" | 2.49 | 7.24 | 1.25 | 2.51 | 8.25 | 1.99 |
| 1 1/2" | 2.49 | 7.24 | 1.50 | 2.50 | 8.25 | 2.27 |
| 2" | 3.10 | 9.50 | 2.00 | 3.40 | 10.50 | 2.91 |