

Project		Catalog #		Type	
Prepared by		Notes		Date	



Metalux

WSNLED

Premium LED Wraparound

Typical Applications

Commercial • Institutional • Retail • Industrial

Interactive Menu

- Order Information [page 2](#)
- Photometric Data [page 3](#)
- Product Warranty

Product Certification



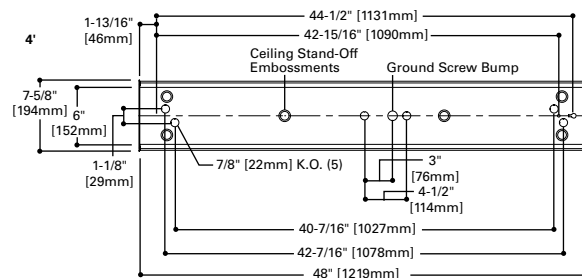
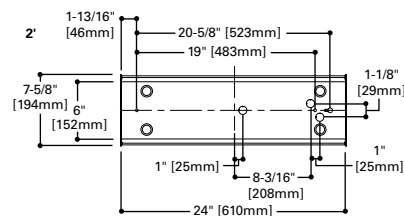
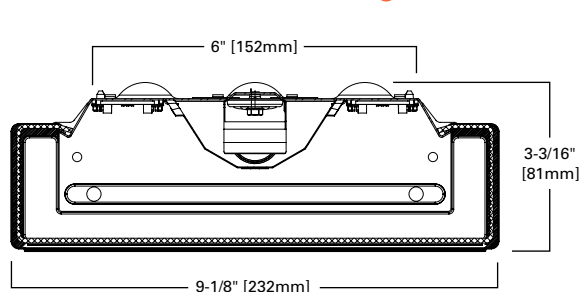
Product Features



Top Product Features

- 4 ft. and 2 ft. product configurations
- Premium LED lens material provides best-in-class illumination
- UNV (120V-277V) 0 to 10V dimmable driver
- Color Temperature (CCT): 3000K, 3500K, 4000K, 5000K
- Ideal for single or continuous row applications
- Options to meet Trade Agreements Act requirements

Dimensional and Mounting Details



Order Information

SAMPLE ORDER NUMBER: **4WSNLED-LD4-40SL-F-UNV-L840-CD1-U**

Domestic Preferences	Length	Series	Lamp Type	Lumen Output	Lens	Voltage	Emergency Options	
Domestic Preferences ⁽¹⁾ [Blank]=Standard TAA=Trade Agreements Act	2=2 ft. 4=4 ft.	WSNLED=Premium Commercial LED Wraparound	LD4=LED4.0	20SL=2000 24SL=2400 28SL=2800 32SL=3200 36SL=3600 40SL=4000	44SL=4400 48HL=4800 52HL=5200 56HL=5600 60HL=6000 64HL=6400	F=Frost Acrylic (standard)	347=347V ⁽³⁾ 480=480V ⁽³⁾ UNV=Universal Voltage 120-277	EL7W=7-watt, 120V-277V emergency battery pack installed ^{(4), (6)} EL14W=14-watt 120V-277V emergency battery pack installed ^{(4), (6)}
Notes (1) Only product configurations with this designated prefix are built to be compliant with the Trade Agreements Act of 1979 (TAA). Please refer to DOMESTIC PREFERENCES website for more information. Components shipped separately may be separately analyzed under domestic preference requirements.		Notes (2) DesignLights Consortium® Qualified and classified for DLC Standard, refer to www.designlights.org for details.				Notes (3) 4 ft. model.	Notes (4) Emergency options not available for 2 ft. versions. Requires larger cover which changes the appearance. (5) Emergency options use taller ballast cover that alters appearance. (6) With integral test switch/indicator/laser test. For approximate delivered lumens multiply the lumens per watt of the desired fixture by the wattage of the emergency battery pack (100 lm/W x 7-700 lumens). IES-format photometry for luminaire under emergency operation available.	

CCT	Driver Type	Number of Drivers	Packaging	Accessories
CCT	Driver Type	Number of Drivers	Packaging	Accessories (order separately) ⁽⁹⁾
L830=3000K L835=3500K L840=4000K L850=5000K	CD=0-10V Dimming Driver (10%-100% Dimming) SD=Step-Dim Driver SLTD=Fifth Light DALI Driver (5%-100% Dimming) ^{(7), (8)}	1=1 Driver	U=Unit Pack	SCF=Fixed Stem Set (Specify Length) SCS=Swivel Stem Set (Specify Length) SCA=Adjustable 48" Stem Set A1B/Spacer-U=Spacer 1-1/2" to 2-1/2" from ceiling (Use 2 Per Fixture)
	Notes (7) 4 ft. model only. (8) SLTD DALI driver available for all lumen unit only.			Notes (9) Accessories sold separately will be separately analyzed under domestic preference requirements. Consult factory for further information.

Product Specifications

Construction

- Housing consists of die formed cold rolled steel.
- Ends formed with the housing for strength and provisions for continuous row aligners
- Steel end plates with 7/8" KO and light-seal embossment
- Driver cover can be removed without tools

Controls

- WSNLED is Powered by Fifth Light, with standard a 0-10V continuous dimming driver that works with any 0-10V control/ dimmer
- Combine with energy saving products like occupancy sensors, daylighting controls and lighting relay panels to maximize energy savings
- Dimming range is 10% to 100%; varies by control device
- Other driver options include step-dim or, go fully digital with the Digital Addressable Lighting Interface (DALI) drivers

Electrical

- Long-Life LED system coupled with electrical driver to deliver optimal performance
- LED's available in 3000K, 3500K, 4000K and 5000K with a min. 80 CRI
- Projected life at 70% lumen maintenance is nearly 150,000 hours with TM21 rating up to L87 > 60,000 hours
- Electronic drivers are available for 120-277V applications. A 0-10V dimming driver is standard

Emergency Battery Pack Options

- Optional 120V-277V integral emergency battery pack is available in 7-watts or 14-watts to meet critical life-safety lighting requirements
- The 90-minute batteries provide constant power to the LED system, ensuring code compliance
- The patented EZ Key prevents accidental discharge of the battery during construction

Finish

- Multistage iron phosphate pretreatment ensures maximum bonding and rust inhibitor
- High reflective paint after fabrication, baked white enamel finish is standard

Channel/Wireway Cover

- Die formed heavy gauge steel
- Tight fit for ease of maintenance

Shielding

- Acrylic end caps with a frost finish to improve aesthetics and illumination
- Clear acrylic lens coupled with LED optical materials providing superior brightness control while improving overall light distribution and aesthetics
- This distribution is further enhanced through the use of embedded prisms within the lens on both side and bottom

Installation

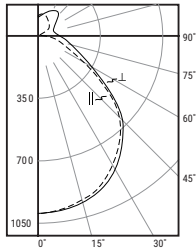
- Fixture may be surface, pendant, or stem mounted
- See accessories below for ordering information

Compliance

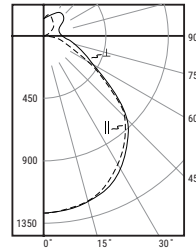
- Indoor luminaires are cULus listed for 25°C ambient environments, damp location listed, RoHS compliant, and LED modules comply with IESNA LM-79 and LM-80 standards
- DesignLights Consortium® Qualified and classified for DLC Standard, refer to www.designlights.org for details
- Suitable for use in clothes closets when installed in accordance with the NEC 410.16 spacing requirements
- Can be used for State of California Title 24 high efficacy luminaire

Photometric Data

[View IES files](#)



4WSNLED-LD4-32SL-F-UNV-L835-CD1-U
 Electronic Driver Linear LED 3500K
 Spacing criterion: (H) 1.3 x mounting height,
 (L) 1.3 x mounting height
 Lumens: 3212
 Input Watts: 30.0W
 Efficacy: 107.1 lm/W
 Test Report:
 4WSNLED-LD4-32SL-F-UNV-L835-CD1-U.IES



4WSNLED-LD4-40SL-F-UNV-L835-CD1-U
 Electronic Driver Linear LED 3500K
 Spacing criterion: (H) 1.3 x mounting height,
 (L) 1.3 x mounting height
 Lumens: 4087
 Input Watts: 39.8W
 Efficacy: 102.7 lm/W
 Test Report:
 4WSNLED-LD4-40SL-F-UNV-L835-CD1-U.IES

Energy and Performance Data by Catalog Number

Lumen Type	Length	Catalog Number	Nominal 3500K Lumens	Wattage	lm/W
Standard	2 ft.	2WSNLED-LD4-20SL-F-UNV-L8XX-CD1-U	2073	21.7	95
Standard	2 ft.	2WSNLED-LD4-24SL-F-UNV-L8XX-CD1-U	2390	25.6	93
Standard	2 ft.	2WSNLED-LD4-28SL-F-UNV-L8XX-CD1-U	2832	31.4	90
Standard	4 ft.	4WSNLED-LD4-20SL-F-UNV-L8XX-CD1-U	2009	18.3	110
Standard	4 ft.	4WSNLED-LD4-24SL-F-UNV-L8XX-CD1-U	2393	21.9	109
Standard	4 ft.	4WSNLED-LD4-28SL-F-UNV-L8XX-CD1-U	2853	26.5	108
Standard	4 ft.	4WSNLED-LD4-32SL-F-UNV-L8XX-CD1-U	3212	30.0	107
Standard	4 ft.	4WSNLED-LD4-36SL-F-UNV-L8XX-CD1-U	3653	34.8	105
Standard	4 ft.	4WSNLED-LD4-40SL-F-UNV-L8XX-CD1-U	4087	39.8	103
Standard	4 ft.	4WSNLED-LD4-44SL-F-UNV-L8XX-CD1-U	4424	43.8	101
High	4 ft.	4WSNLED-LD4-48HL-F-UNV-L8XX-CD1-U	4749	47.9	99
High	4 ft.	4WSNLED-LD4-52HL-F-UNV-L8XX-CD1-U	5138	53.3	96
High	4 ft.	4WSNLED-LD4-56HL-F-UNV-L8XX-CD1-U	5536	58.8	94
High	4 ft.	4WSNLED-LD4-60HL-F-UNV-L8XX-CD1-U	6064	66.9	91
High	4 ft.	4WSNLED-LD4-64HL-F-UNV-L8XX-CD1-U	6490	72.9	89

Shipping Data

Catalog No.	Wt.
2WSNLED	5 lbs.
4WSNLED	9 lbs.

CCT Table

Approximate Color Temperature Multiplier	
5000K	1.03
4000K	1.00
3000K	0.98