

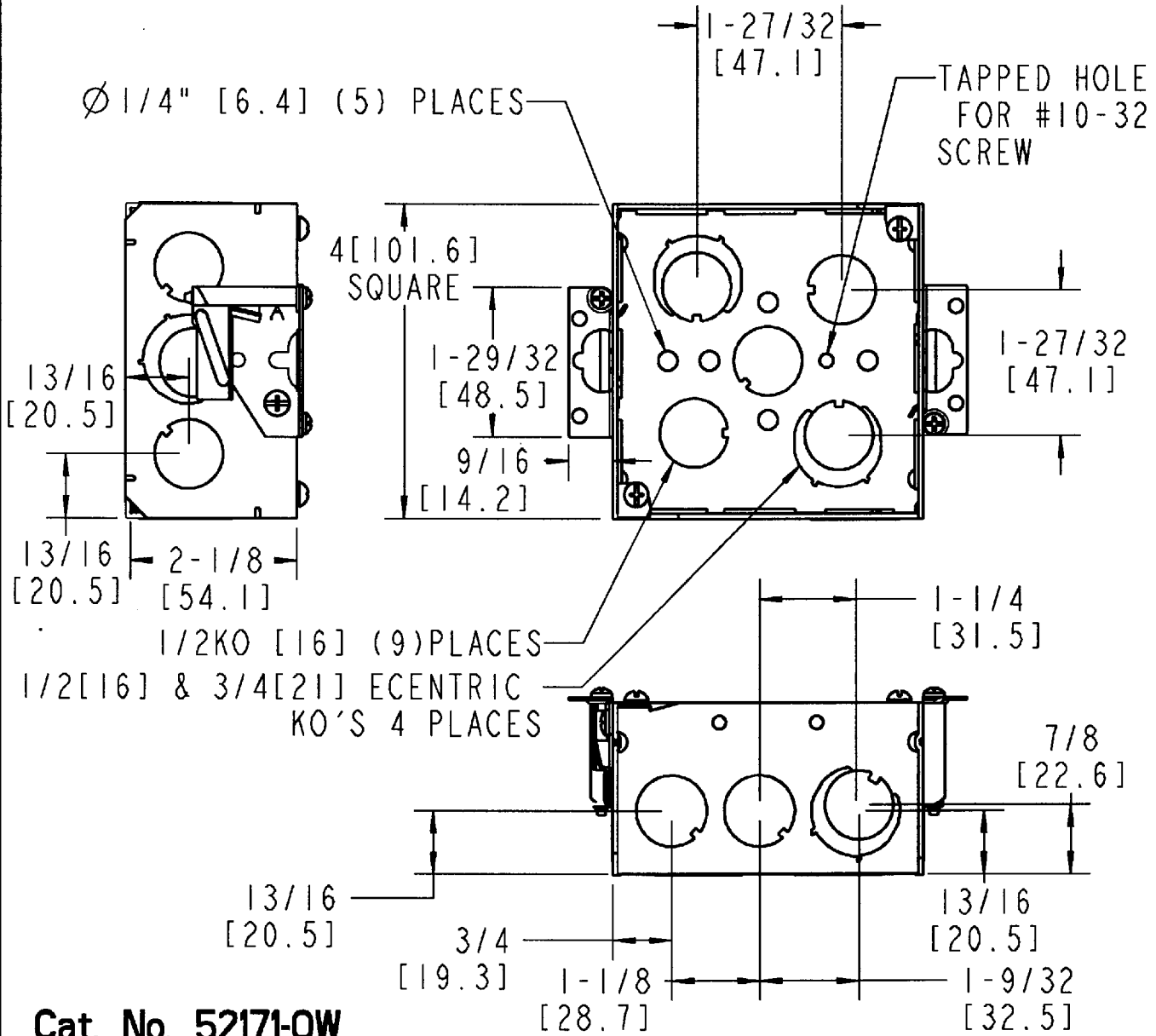


Steel City



NOTES:

1- BOX MATERIAL .0625" [1.59] THICK MIN SPANGLE G-90 STEEL.



Cat. No. 52171-OW

GENERAL NOTES

1. ALL DIMENSIONS ARE FOR REFERENCE ONLY.
2. DIMENSIONS IN BRACKETS [] ARE IN METRIC UNITS.

REVISIONS

** SEE ERN (****) FOR APPROVAL SIGNATURES & RELEASE DATE.
PROJECT NO: ****

Thomas & Betts
www.tnb.com

DESCRIPTION: **4" SQUARE BOX, 2-1/8" DP,
W/1/2 & 3/4 EKO'S W/ OLD WORK SWING EARS**

ORIGINAL PROJECT NO / (ERN NO)	SHEET NO:	REV. NO:	DRAWING NO:
NM400387 / (2005887)	1 OF 1	-	WSD-000193