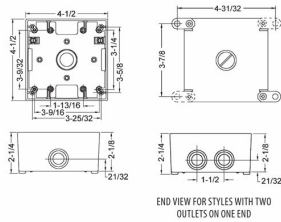




TWO GANG BOXES - 2 IN. TO 2-5/8 IN. DEEP

2 in. Deep with Lugs - Seven Threaded Outlets - 4-1/2 in. x 4-1/2 in.
N/A

D06



Catalog #: 5346-0

APPLICATIONS

For use in branch circuit wiring in wet, damp, or dry locations
May be used as a weatherproof junction box, or as a housing for receptacles, switches, and GFCI's

PRODUCT FEATURES

Reinforced connector outlets
State-of-the-art powder coat finish provides maximum weatherability and scratch resistance
Eight box mounting options with detachable lugs
Two closure plugs included
Hubs accept all threaded fittings and threaded conduit
Ground screw installed
Multi-lingual instructions in each package
Includes gasket and mounting hardware
N/A

UL LISTED

File E195978

CSA

C22.2 No. 18

NEMA

3R Rated

GENERAL PRODUCT INFORMATION

Color: Gray

CONFIGURATION

Number Of Outlets: 7
Gangs: 2

PRODUCT MEASUREMENTS

Depth: 2 in.
Outlet Size: 3/4 in.
Cubic Inches (cm³): 31.0 (508.0)
Wt. Ea. (Lbs.): 0.917

PACKAGING

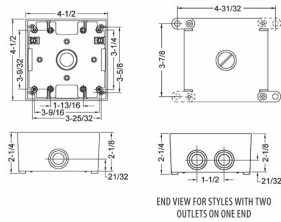
Package Type: Shrink
Std. Pkg.: 12
Product UPC-A Labeled: Yes
Weight (Lbs. Per/C): 91.70
Ship Carton Length (in.): 16.19
Ship Carton Width (in.): 6.50
Ship Carton Height (in.): 8.50
Ctn Weight (Lbs.): 11.00
Pallet Qty: 1080.00
UPC Number: 050169534601
I2of5: 50050169534606



TWO GANG BOXES - 2 IN. TO 2-5/8 IN. DEEP

2 in. Deep with Lugs - Seven Threaded Outlets - 4-1/2 in. x 4-1/2 in.
N/A

D06



Catalog #: 5346-0

APPLICATIONS

For use in branch circuit wiring in wet, damp, or dry locations
May be used as a weatherproof junction box, or as a housing for receptacles, switches, and GFCI's

PRODUCT FEATURES

Reinforced connector outlets
State-of-the-art powder coat finish provides maximum weatherability and scratch resistance
Eight box mounting options with detachable lugs
Two closure plugs included
Hubs accept all threaded fittings and threaded conduit
Ground screw installed
Multi-lingual instructions in each package
Includes gasket and mounting hardware
N/A

UL LISTED

File E195978

CSA

C22.2 No. 18

NEMA

3R Rated

GENERAL PRODUCT INFORMATION

Color: Gray

CONFIGURATION

Number Of Outlets: 7
Gangs: 2

PRODUCT MEASUREMENTS

Depth: 2 in.
Outlet Size: 3/4 in.
Cubic Inches (cm³): 31.0 (508.0)
Wt. Ea. (Lbs.): 0.917

PACKAGING

Package Type: Shrink
Std. Pkg.: 12
Product UPC-A Labeled: Yes
Weight (Lbs. Per/C): 91.70
Ship Carton Length (in.): 16.19
Ship Carton Width (in.): 6.50
Ship Carton Height (in.): 8.50
Ctn Weight (Lbs.): 11.00
Pallet Qty: 1080.00
UPC Number: 050169534601
I2of5: 50050169534606