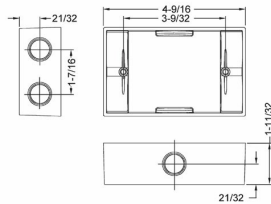




SINGLE GANG EXTENSIONS & ADAPTERS

1-1/2 in. Deep Extension Adapters with Lugs - Six Threaded Outlets - 5-1/4 in. x 3-1/2 in.
N/A

D05



Catalog #: 5400-0

APPLICATIONS

Used to provide additional capacity needed for NEC box fill requirements
Adapters allow installer to add "take-offs" to new boxes/devices

PRODUCT FEATURES

- State-of-the-art powder coat finish provides maximum weatherability and scratch resistance
- Closure plugs provided for two and six outlet styles
- Internal threads and hubs comply with NEMA requirements
- Hubs accept all threaded fittings and threaded conduit
- Multi-lingual instructions in each package
- Includes gasket and mounting hardware
- N/A

UL LISTED

File E195978

CSA

C22.2 No. 18

NEMA

3R Rated

GENERAL PRODUCT INFORMATION

Color: Gray

CONFIGURATION

Number Of Outlets: 6
Gangs: 1

PRODUCT MEASUREMENTS

Depth: 1-1/2 in.
Outlet Size: 1/2 in.
Cubic Inches (cm3): 9.5 (155.7)
Wt. Ea. (Lbs.): 0.575

PACKAGING

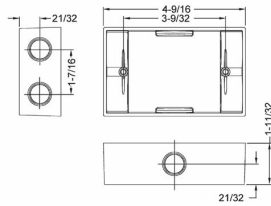
Package Type: Shrink
Std. Pkg.: 20
Product UPC-A Labeled: Yes
Ship Carton Length (in.): 16.19
Ship Carton Width (in.): 6.50
Ship Carton Height (in.): 8.50
Ctn Weight (Lbs.): 11.50
Pallet Qty: 1800.00
UPC Number: 050169540008
I2of5: 50050169540003



SINGLE GANG EXTENSIONS & ADAPTERS

1-1/2 in. Deep Extension Adapters with Lugs - Six Threaded Outlets - 5-1/4 in. x 3-1/2 in.
N/A

D05



Catalog #: 5400-0

APPLICATIONS

Used to provide additional capacity needed for NEC box fill requirements
Adapters allow installer to add "take-offs" to new boxes/devices

PRODUCT FEATURES

State-of-the-art powder coat finish provides maximum weatherability and scratch resistance
Closure plugs provided for two and six outlet styles
Internal threads and hubs comply with NEMA requirements
Hubs accept all threaded fittings and threaded conduit
Multi-lingual instructions in each package
Includes gasket and mounting hardware
N/A

UL LISTED

File E195978

CSA

C22.2 No. 18

NEMA

3R Rated

GENERAL PRODUCT INFORMATION

Color: Gray

CONFIGURATION

Number Of Outlets: 6
Gangs: 1

PRODUCT MEASUREMENTS

Depth: 1-1/2 in.
Outlet Size: 1/2 in.
Cubic Inches (cm3): 9.5 (155.7)
Wt. Ea. (Lbs.): 0.575

PACKAGING

Package Type: Shrink
Std. Pkg.: 20
Product UPC-A Labeled: Yes
Ship Carton Length (in.): 16.19
Ship Carton Width (in.): 6.50
Ship Carton Height (in.): 8.50
Ctn Weight (Lbs.): 11.50
Pallet Qty: 1800.00
UPC Number: 050169540008
I2of5: 50050169540003