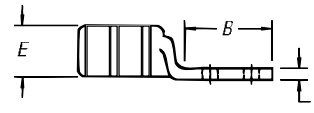
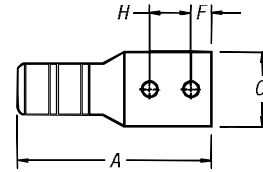


Compression Connectors for Copper Conductor

Two-Hole Lugs — Long Barrel 600V to 35kV



Peep Holes Available!
Add suffix -PH



Material: High-Conductivity
Wrought Copper
Finish: Electro Tin Plate

CAT. NO.	WIRE SIZE			DIMENSIONS (IN.)							DIE CODE	DIE COLOR		
	CODE	FLEX CLASS G, H, I, K, M†	BOLT SIZE	A	B	C	D	E	F	H				
54801BE			¼	1.86	1.19	.50	.05	.20	¼	⅝			ERG4002, ERG4005	"C" NEST
256-31426-3			#10	2.00	1.25	.37	.07	.20	¼	⅝				
256-31426-3SPH	#14-10 AWG		#10	2.00	1.25	.37	.07	.20	¼	⅝ -¾				
256-30695-1298			¼	1.89	1.22	.50	.05	.20	¼	⅝				
256-30695-1730			¼	1.98	1.31	.50	.05	.20	¼	⅝ -¾				
54850BE*		37/24 = 14.9 kcmil	¼	2.19	1.89	.42	.07	.26	¼	⅝	21		RED	
54851BE*	#8 AWG	#8 Weld	¼	2.31	1.29	.47	.06	.26	¼	¾	21			
256-30695-1157		23 Navy	⅜	3.00	2.10	.56	.06	.26	⅝	1	21		BLUE	
54852BE*		30 Navy	¼	2.28	1.28	.44	.08	.30	¼	⅝	24			
256-30695-1014		61/24 = 24.6 kcmil	¼	2.63	1.63	.43	.08	.30	¼	1	24			
256-30695-1225*	#6 AWG	#6 Weld	¼	2.43	1.43	.43	.08	.30	¼	¾	24			
256-30695-1158*		#5 Weld	⅜	2.93	1.93	.59	.06	.30	⅝	1	24		GRAY	
256-30695-868*			½	4.18	3.00	.88	.11	.30	½	1¾	24			
54854BE*			¼	2.31	1.19	.52	.10	.37	¼	⅝	29			
256-30695-1246*		40-50 Navy	¼	2.31	1.31	.56	.09	.37	¼	¾	29			
256-30695-1015	#4 AWG	#5, 91/24 = 36.7 kcmil	¼	2.88	1.88	.58	.09	.37	⅝	1	29		BROWN	
256-30695-1337		#4 Weld	⅜	2.75	1.75	.56	.10	.37	1½/2	1	29			
256-30695-1159*			⅜	3.13	1.98	.59	.09	.37	⅝	1	29			
256-30695-733*			½	4.18	3.00	.88	.09	.37	½	1¾	29			
256-30695-1016			¼	3.06	1.88	.67	.09	.41	⅝	1	33		GREEN	
54855BE*			¼	2.43	1.28	.59	.11	.41	¼	⅝	33			
256-30695-1300*		60 Navy	¼	2.63	1.35	.68	.11	.41	¼	¾	33			
54856BE*	#2-3 AWG	#3 Weld	⅜	2.78	1.63	.59	.11	.41	⅝	¾	33			
54810BE		125/24 = 50.4 kcmil	⅜	3.80	2.57	.59	.11	.41	⅝	1¾	33			
256-30695-1160*			⅜	3.08	1.94	.59	.11	.41	⅝	1	33			
256-30695-869			½	4.02	2.88	.75	.09	.41	⅝	1¾	33		PINK	
54811BE*			½	4.28	3.00	.88	.11	.41	½	1¾	33			
54809BE		75 Navy	¼	2.88	1.19	.67	.11	.47	¼	⅝	37			
54812BE		150/24 = 60.5 kcmil	¼	2.75	1.40	.67	.11	.47	¼	¾	37			
54858BE	#1 AWG	175/24 = 70.6 kcmil,	⅜	2.97	1.63	.67	.11	.47	⅝	⅝	37			
256-30695-1161		#2 Weld	⅜	3.30	1.98	.67	.11	.47	⅝	1	37			
54857BE			½	4.43	3.00	.88	.11	.47	½	1¾	37		PINK	
256-30695-1018			¼	3.63	1.88	.75	.13	.52	⅝	1	42			
256-30695-1018P			¼	3.63	1.88	.75	.13	.52	⅝	1	42			
54859BE		100 Navy	¼	2.63	1.19	.75	.13	.52	¼	⅝	42			
54813BE	1/0 AWG	#1 Weld	¼	2.71	1.38	.75	.13	.52	¼	¾	42			
54860BE		225/24 = 90.8 kcmil	⅜	2.97	1.63	.75	.13	.52	⅝	⅝	42			
256-30695-1162P			⅜	3.25	1.98	.75	.13	.52	⅝	1	42			
256-30695-1162			⅜	3.23	1.93	.75	.13	.52	⅝	1	42			
256-30695-593*			½	4.33	3.00	.75	.13	.52	⅝	1¾	42			

† Contact Technical Services for specific stranding listings

* UL® Listed for direct-burial applications

Tooling: pp. F-80-F-100 Die Selector Chart: pp. F-101-F-104

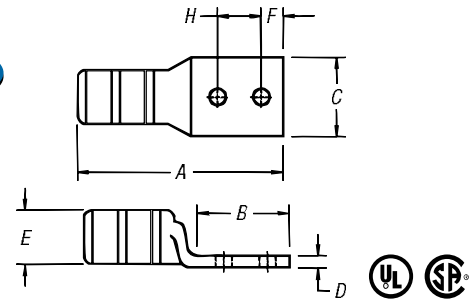
Compression Connectors for Copper Conductor

Two-Hole Lugs — Long Barrel 600V to 35KV (continued)

Material: High-Conductivity
Wrought Copper
Finish: Electro Tin Plate



Peep Holes Available!
Add suffix **-PH**



CAT. NO.	WIRE SIZE			DIMENSIONS (IN.)								DIE CODE	DIE COLOR
	CODE	FLEX CLASS G, H, I, K, M [†]	BOLT SIZE	A	B	C	D	E	F	H			
54814BE			¼	2.62	1.25	.83	.13	.57	¼	⅝	45	BLACK	
256-30695-1299		125 Navy	¼	2.69	1.31	.81	.13	.57	¼	¾	45		
256-30695-1116	2/0 AWG	275/24 = 111 kcmil	⅜	3.19	1.81	.83	.13	.57	⅝	1	45		
256-30695-1116P		1/0 Weld	⅜	3.19	1.81	.83	.13	.57	⅝	1	45		
54862BE*			½	4.20	2.81	.83	.13	.57	½	1¼	45		
54815BE		2/0 Weld	¼	2.89	1.45	.92	.13	.63	¼	¾	50		ORANGE
54816BE	3/0 AWG	325/24 = 131 kcmil	⅜	3.25	1.63	.92	.13	.63	⅝	1	50		
54864BE		150 Navy	½	4.48	3.00	.94	.13	.63	½	1¼	50		
54817BE		200 Navy	⅜	3.15	1.38	1.03	.14	.70	¼	¾	54		PURPLE
54818BE		200 Navy	⅜	4.38	2.63	1.03	.14	.70	⅝	1¼	54		
256-30695-1117	4/0 AWG	450/24 = 182 kcmil	⅜	3.35	1.81	1.03	.14	.70	⅝	1	54		
256-30695-1117P		3/0 Weld	⅜	3.50	1.88	1.03	.14	.70	⅝	1	54		
54866BE*			½	4.70	3.00	1.03	.14	.70	½	1¼	54		
256-30695-1245		250 Navy	⅜	3.83	1.93	1.13	.14	.77	⅝	1	62	YELLOW	
256-30695-1245P	250 kcmil	550/24 = 222 kcmil,	⅜	3.83	1.93	1.13	.14	.77	⅝	1	62		
54868BE*		4/0 Weld	½	4.92	3.00	1.13	.14	.77	½	1¼	62		
54819BE	300 kcmil	300 Navy	⅜	5.04	2.80	1.25	.15	.85	⅝	1	66	WHITE	
54870BE		250 Weld, 262, 650/24	½	5.23	3.00	1.25	.15	.85	½	1¼	66		
54820BE			¼	4.29	1.93	1.36	.18	.93	¼	¾	71	RED	
256-30695-1118	350 kcmil		⅜	4.33	1.93	1.36	.18	.93	⅝	1	71		
256-30695-1118P			⅜	4.33	1.93	1.36	.18	.93	⅝	1	71		
54872BE			½	5.40	3.00	1.36	.18	.93	½	1¼	71		
54822BE		400 Navy	¼	4.38	1.93	1.41	.17	.96	¼	¾	76	BLUE	
54821BE	400 kcmil	775/24 = 313 kcmil	⅜	4.43	1.93	1.41	.17	.96	⅝	1	76		
54874BE		300 Flex, 350, 259 Str.	½	5.51	3.00	1.41	.17	.96	½	1¼	76		
54823BE			¼	4.93	1.94	1.61	.22	1.10	¼	¾	87	BROWN	
256-30695-1119	500 kcmil	400 Weld, G, H, I	⅜	5.00	1.93	1.61	.22	1.10	⅝	1	87		
256-30695-1119P		925/24 = 373 kcmil	⅜	5.00	1.93	1.61	.22	1.10	⅝	1	87		
54876BE		350, K	½	6.00	3.00	1.61	.22	1.10	½	1¼	87		
54824BE	600 kcmil	450, I, K	⅜	5.70	2.80	1.75	.24	1.20	⅝	1	94	GREEN	
54878BE		1100/24 = 444 kcmil	½	5.83	3.00	1.75	.24	1.20	½	1¼	94		
54879BE	700 kcmil	1325/24 = 535 kcmil	½	5.83	3.00	1.80	.24	1.25	½	1¼	99	PINK	
256-30695-1222			⅜	5.25	2.06	1.94	.27	1.33	½	1	106	BLACK	
256-30695-1222P	750 kcmil	500, G, H, I, K	⅜	5.25	2.06	1.94	.27	1.33	½	1	106		
54880BE		1325/24 = 535 kcmil	½	6.20	3.00	1.94	.27	1.33	½	1¼	106		
58884BE		1600/24 = 646 kcmil	½	6.16	3.00	1.94	.27	1.33	½	1¼	106		
58826BE	900 kcmil	1925/24 = 777 kcmil	½	6.74	3.00	2.18	.31	1.50	½	1¼	115	YELLOW	
54826BE	1000 kcmil	1000 Navy	⅜	6.49	2.80	2.27	.30	1.55	⅝	1	125	N/A	
54882BE			½	6.66	3.00	2.27	.30	1.55	⅝	1¼	125		
54888BE	1250 kcmil	929, 2300/24	½	7.88	3.00	2.42	.35	1.67	⅝	1¼	140		

[†] Contact Technical Services for specific stranding listings

* UL[®] Listed for direct-burial applications

Tooling: pp. F-80-F-100 Die Selector Chart: pp. F-101-F-104

Overview

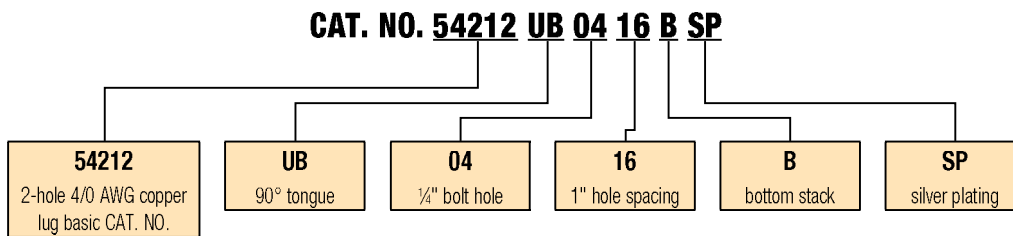
Order Form

Catalog No. _____ Qty. _____
 (For 54100, 54200, 54800 & 54900 Series Copper Lugs Only)

Design Controls and Requirements

All "MADE-UP" catalog numbers start with a standard or basic catalog number and are followed by the customer-required extra features: tongue shape, bolt hole size, distance between bolt holes, stacking, plating and inspection hole (peep hole). A code letter or a number has been assigned to each extra feature. See CODE TABLE.

- Notes:** 1) Lack of any of the extra features on the "MADE-UP" catalog number means that the standard Cat. No. features are prevalent.
 2) If either bolt hole size or distance between bolt holes needs to be changed from standard Cat. No., both code numbers will appear on the "MADE-UP" Cat. No. (See example below)



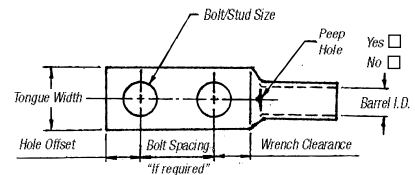
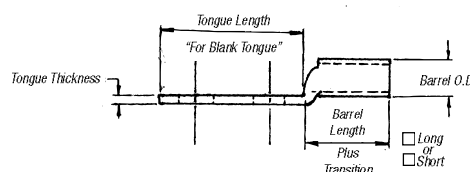
Code Table

TONGUE SHAPE		BOLT HOLES		BOLT HOLE CENTERS		STACKING		FINISH (PLATING)		INSPECTION HOLE (LONG BARREL)		INSPECTION HOLE (SHORT BARREL)		
TYPE	CODE	SIZE	.020	CODE	DISTANCE .015	CODE	TYPE	CODE	TYPE 1	CODE	I.D.	CODE	I.D.	CODE
15°	UI	#8	.173	02	1/2"	08	Top	T**	Silver Plate	SP	Peep Hole	PH	Blind End	BE
30°	UT	#10	.204	03	5/8"	10	Bottom	B	Lead Plate	LP				
45°	UF	1/4"	.281	04	3/4"	12			Nickel Plate	NP				
60°	US	5/16"	.344	05	1/2"	14			Plain Finish	PF				
90°	UB	3/8"	.406	06	1"	16			No Marking	NM				
Blank	BT	1/2"	.531	08	1 1/8"	18			Not QTP if					
(No Bolt Hole)		5/8"	.656	10	1 1/4"	20			suffix other					
		3/4"	.812	12	1 3/8"	22			than - PF or					
		7/8"	.937	14	1 1/2"	24			standard					
		1"	1.062	16	1 5/8"	26			tin plate					
					1 3/4"	28								
					1 7/8"	30								
					2"	32								

* These bolt centers not available for bolt holes larger than 3/8".

** Not required for 45° & 90° top stacking.

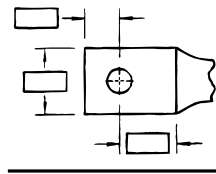
Cable	Code <input type="checkbox"/>	
	Weld <input type="checkbox"/>	
<input type="checkbox"/> #8	<input type="checkbox"/> #6	<input type="checkbox"/> #4
<input type="checkbox"/> #2	<input type="checkbox"/> #1	<input type="checkbox"/> 1/0
<input type="checkbox"/> 2/0	<input type="checkbox"/> 3/0	<input type="checkbox"/> 4/0
<input type="checkbox"/> 250 kcmil & up (Code Only)		



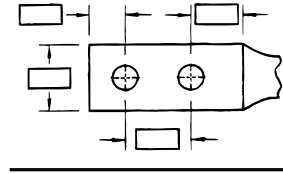
Overview

Tongue Specifications — See Chart "A" For Dimensions

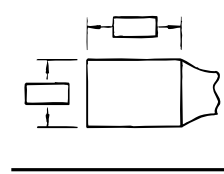
Stud Sizes		
<input type="checkbox"/> #8	<input type="checkbox"/> #10	<input type="checkbox"/> ¼"
<input type="checkbox"/> ⅜"	<input type="checkbox"/> ⅝"	<input type="checkbox"/> ½"
<input type="checkbox"/> ¾"	<input type="checkbox"/> ⅞"	<input type="checkbox"/> 1"



Single Hole



Double Hole



Blank

Chart A

NOMINAL BOLT HOLE SIZE .015	HOLE OFFSET .030	WRENCH CLEARANCE MIN.	TONGUE WIDTH CABLE SIZE										
			#8 CODE #8 WELD	#6 CODE #6 WELD	#4 CODE #4 WELD	#2 CODE #2 WELD	#1 CODE #1 WELD	1/0 CODE 1/0 WELD	2/0 CODE 2/0 WELD	3/0 CODE 3/0 WELD	4/0 CODE 3/0 WELD	250 CODE	
#8	.173	.200	.240	.406	.437	.562	.593	.672	.750	.825	.937	1.030	1.125
#10	.204	.218	.250	.406	.437	.562	.593	.672	.750	.825	.937	1.030	1.125
¼"	.281	.250	.312	.469	.500	.562	.593	.672	.750	.825	.937	1.030	1.125
⅜"	.344	.375	.406	.562	.562	.562	.675	.672	.750	.825	.937	1.030	1.125
⅝"	.406	.375	.440	.578	.578	.594	.675	.672	.750	.825	.937	1.030	1.125
½"	.531	.500	.562	—	—	—	.750	.750	.750	.825	.937	1.030	1.125
¾"	.656	.625	.875	—	—	—	—	—	—	—	.937	1.030	1.125
⅞"	.812	.750	.770	—	—	—	—	—	—	—	—	—	—
1"	.937	.875	.890	—	—	—	—	—	—	—	—	—	—
1*	1.062	.937	1.000	—	—	—	—	—	—	—	—	—	—

* These bolt holes available in one-hole lug only.

Chart B

CABLE SIZE	TONGUE THICKNESS	STRAIGHT LUG BARREL LENGTH PLUS TRANSITION		BARREL		DIM "X" STACKED LUGS			DIM "Y"		DIM "H"	
		SHORT	LONG	O.D.	I.D.	STRAIGHT	45°	90°	SHORT	LONG	SHORT	LONG
#8	.080	.635	.935	.260	.180	.158	.478	.394	.595	.808	.779	1.079
#6	.081	.675	.975	.296	.215	.134	.544	.432	.587	.799	.767	1.067
#4	.099	.685	.985	.365	.266	.175	.622	.502	.637	.849	.838	1.138
#2	.108	.815	1.115	.410	.302	.216	.649	.535	.711	.923	.958	1.258
#1	.106	.825	1.275	.467	.361	.212	.731	.592	.710	1.028	.956	1.406
1/0	.125	.975	1.325	.520	.396	.250	.789	.646	.794	1.042	1.075	1.425
2/0	.125	.965	1.315	.571	.446	.250	.859	.696	.829	1.077	1.125	1.475
3/0	.125	1.085	1.435	.632	.507	.250	.946	.757	.900	1.148	1.225	1.575
4/0	.137	1.255	1.705	.701	.564	.274	1.031	.826	1.015	1.333	1.387	1.837
250	.137	1.375	1.925	.766	.629	.274	1.123	.891	1.085	1.474	1.487	2.037
300	.153	1.900	2.675	.850	.660	.459	1.226	.975	1.180	1.726	1.924	2.679
350	.177	2.090	2.896	.926	.720	.531	1.333	1.103	1.267	1.830	2.096	2.896
400	.173	2.460	2.980	.960	.757	.519	1.370	1.085	1.551	1.913	2.484	2.984
500	.218	2.670	3.610	1.100	.852	.654	1.514	1.225	1.629	2.266	2.669	3.619
600	.244	2.900	3.490	1.200	.926	.732	1.630	1.325	1.762	2.147	2.897	3.497
700	.228	2.784	—	1.255	.997	.684	1.662	1.375	1.780	—	3.011	—
750	.270	3.050	3.925	1.330	1.030	.810	1.745	1.455	1.827	2.434	3.050	3.925
800	.266	3.213	—	1.375	1.079	.800	1.728	1.625	1.952	2.787	3.213	4.554
900	.313	3.450	4.550	1.500	1.145	.940	1.900	1.650	2.065	—	1.387	—
1,000	.297	3.356	4.500	1.550	1.203	.890	2.070	1.675	2.031	2.787	1.487	4.506

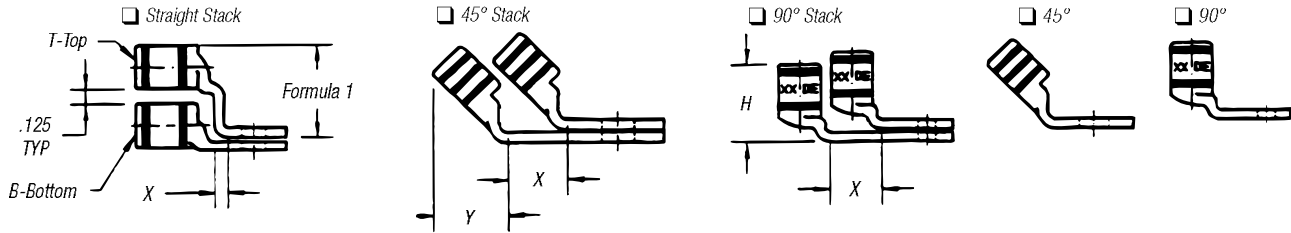
Note: Stacking lugs are available for one bolt only.

Consult Factory: Straight: 700 kcmil & up.

45°: 400 kcmil & up

90°: 500 kcmil & up

Overview



Formula 1 = (.125 + 2 (OD) + .037 – Tongue Thickness)

Chart C

BOLT HOLE SIZE	TONGUE WIDTH .030 CODE CABLE SIZE										
	300 KCMIL 4/0 WELD	350 KCMIL	400 KCMIL	500 KCMIL 400 WELD	600 KCMIL 500 WELD	1325/24	700 KCMIL	750 KCMIL	800 KCMIL	900 KCMIL	1000 KCMIL
#8	—	—	—	—	—	—	—	—	—	—	—
#10	—	—	—	—	—	—	—	—	—	—	—
¼	1.250	1.355	1.410	1.605	1.745	1.805	1.840	1.935	2.010	2.180	2.265
⅓	1.250	1.355	1.410	1.605	1.745	1.805	1.840	1.935	2.010	2.180	2.265
⅕	1.250	1.355	1.410	1.605	1.745	1.805	1.840	1.935	2.010	2.180	2.265
½	1.250	1.355	1.410	1.605	1.745	1.805	1.840	1.935	2.010	2.180	2.265
⅔	1.250	1.355	1.410	1.605	1.745	1.805	1.840	1.935	2.010	2.180	2.265
¾	1.250	1.355	1.410	1.605	1.745	1.805	1.840	1.935	2.010	2.180	2.265
⅞*	—	—	—	1.605	1.745	1.805	1.840	1.935	2.010	2.180	2.265
1*	—	—	—	—	1.745	1.805	1.840	1.935	2.010	2.180	2.265

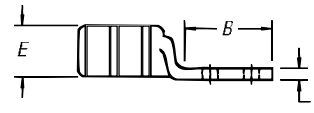
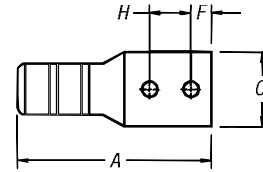
* These bolt holes available in one-hole lug only.

Compression Connectors for Copper Conductor

Two-Hole Lugs — Long Barrel 600V to 35kV



Peep Holes Available!
Add suffix -PH



Material: High-Conductivity
Wrought Copper
Finish: Electro Tin Plate

CAT. NO.	WIRE SIZE			DIMENSIONS (IN.)							DIE CODE	DIE COLOR		
	CODE	FLEX CLASS G, H, I, K, M†	BOLT SIZE	A	B	C	D	E	F	H				
54801BE			¼	1.86	1.19	.50	.05	.20	¼	⅝			ERG4002, ERG4005	"C" NEST
256-31426-3			#10	2.00	1.25	.37	.07	.20	¼	⅝				
256-31426-3SPH	#14-10 AWG		#10	2.00	1.25	.37	.07	.20	¼	⅝ -¾				
256-30695-1298			¼	1.89	1.22	.50	.05	.20	¼	⅝				
256-30695-1730			¼	1.98	1.31	.50	.05	.20	¼	⅝ -¾				
54850BE*		37/24 = 14.9 kcmil	¼	2.19	1.89	.42	.07	.26	¼	⅝	21		RED	
54851BE*	#8 AWG	#8 Weld	¼	2.31	1.29	.47	.06	.26	¼	¾	21			
256-30695-1157		23 Navy	⅝	3.00	2.10	.56	.06	.26	⅝	1	21		BLUE	
54852BE*		30 Navy	¼	2.28	1.28	.44	.08	.30	¼	⅝	24			
256-30695-1014		61/24 = 24.6 kcmil	¼	2.63	1.63	.43	.08	.30	¼	1	24			
256-30695-1225*	#6 AWG	#6 Weld	¼	2.43	1.43	.43	.08	.30	¼	¾	24			
256-30695-1158*		#5 Weld	⅝	2.93	1.93	.59	.06	.30	⅝	1	24		GRAY	
256-30695-868*			½	4.18	3.00	.88	.11	.30	½	1¾	24			
54854BE*			¼	2.31	1.19	.52	.10	.37	¼	⅝	29			
256-30695-1246*		40-50 Navy	¼	2.31	1.31	.56	.09	.37	¼	¾	29			
256-30695-1015	#4 AWG	#5, 91/24 = 36.7 kcmil	¼	2.88	1.88	.58	.09	.37	⅝	1	29		BROWN	
256-30695-1337		#4 Weld	⅝	2.75	1.75	.56	.10	.37	1½/2	1	29			
256-30695-1159*			⅝	3.13	1.98	.59	.09	.37	⅝	1	29			
256-30695-733*			½	4.18	3.00	.88	.09	.37	½	1¾	29			
256-30695-1016			¼	3.06	1.88	.67	.09	.41	⅝	1	33		GREEN	
54855BE*			¼	2.43	1.28	.59	.11	.41	¼	⅝	33			
256-30695-1300*		60 Navy	¼	2.63	1.35	.68	.11	.41	¼	¾	33			
54856BE*	#2-3 AWG	#3 Weld	⅝	2.78	1.63	.59	.11	.41	⅝	¾	33			
54810BE		125/24 = 50.4 kcmil	⅝	3.80	2.57	.59	.11	.41	⅝	1¾	33			
256-30695-1160*			⅝	3.08	1.94	.59	.11	.41	⅝	1	33			
256-30695-869			½	4.02	2.88	.75	.09	.41	⅝	1¾	33		PINK	
54811BE*			½	4.28	3.00	.88	.11	.41	½	1¾	33			
54809BE		75 Navy	¼	2.88	1.19	.67	.11	.47	¼	⅝	37			
54812BE		150/24 = 60.5 kcmil	¼	2.75	1.40	.67	.11	.47	¼	¾	37			
54858BE	#1 AWG	175/24 = 70.6 kcmil,	⅝	2.97	1.63	.67	.11	.47	⅝	⅝	37			
256-30695-1161		#2 Weld	⅝	3.30	1.98	.67	.11	.47	⅝	1	37			
54857BE			½	4.43	3.00	.88	.11	.47	½	1¾	37		PINK	
256-30695-1018			¼	3.63	1.88	.75	.13	.52	⅝	1	42			
256-30695-1018P			¼	3.63	1.88	.75	.13	.52	⅝	1	42			
54859BE		100 Navy	¼	2.63	1.19	.75	.13	.52	¼	⅝	42			
54813BE	1/0 AWG	#1 Weld	¼	2.71	1.38	.75	.13	.52	¼	¾	42			
54860BE		225/24 = 90.8 kcmil	⅝	2.97	1.63	.75	.13	.52	⅝	⅝	42			
256-30695-1162P			⅝	3.25	1.98	.75	.13	.52	⅝	1	42			
256-30695-1162			⅝	3.23	1.93	.75	.13	.52	⅝	1	42			
256-30695-593*			½	4.33	3.00	.75	.13	.52	⅝	1¾	42			

† Contact Technical Services for specific stranding listings

* UL® Listed for direct-burial applications

Tooling: pp. F-80-F-100 Die Selector Chart: pp. F-101-F-104

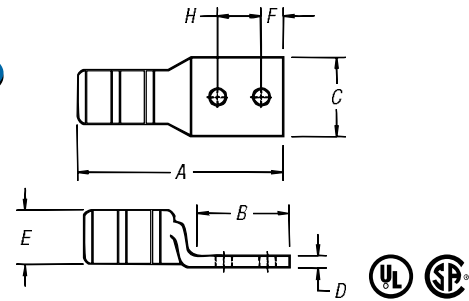
Compression Connectors for Copper Conductor

Two-Hole Lugs — Long Barrel 600V to 35KV (continued)

Material: High-Conductivity
Wrought Copper
Finish: Electro Tin Plate



Peep Holes Available!
Add suffix **-PH**



CAT. NO.	WIRE SIZE			DIMENSIONS (IN.)							DIE CODE	DIE COLOR	
	CODE	FLEX CLASS G, H, I, K, M†	BOLT SIZE	A	B	C	D	E	F	H			
54814BE			¼	2.62	1.25	.83	.13	.57	¼	⅝	45	BLACK	
256-30695-1299		125 Navy	¼	2.69	1.31	.81	.13	.57	¼	¾	45		
256-30695-1116	2/0 AWG	275/24 = 111 kcmil	⅜	3.19	1.81	.83	.13	.57	⅝	1	45		
256-30695-1116P		1/0 Weld	⅜	3.19	1.81	.83	.13	.57	⅝	1	45		
54862BE*			½	4.20	2.81	.83	.13	.57	½	1¼	45		
54815BE		2/0 Weld	¼	2.89	1.45	.92	.13	.63	¼	¾	50		ORANGE
54816BE	3/0 AWG	325/24 = 131 kcmil	⅜	3.25	1.63	.92	.13	.63	⅝	1	50		
54864BE		150 Navy	½	4.48	3.00	.94	.13	.63	½	1¼	50		
54817BE		200 Navy	¼	3.15	1.38	1.03	.14	.70	¼	¾	54		PURPLE
54818BE		200 Navy	⅜	4.38	2.63	1.03	.14	.70	⅝	1¼	54		
256-30695-1117	4/0 AWG	450/24 = 182 kcmil	⅜	3.35	1.81	1.03	.14	.70	⅝	1	54		
256-30695-1117P		3/0 Weld	⅜	3.50	1.88	1.03	.14	.70	⅝	1	54		
54866BE*			½	4.70	3.00	1.03	.14	.70	½	1¼	54		
256-30695-1245		250 Navy	⅜	3.83	1.93	1.13	.14	.77	⅝	1	62	YELLOW	
256-30695-1245P	250 kcmil	550/24 = 222 kcmil,	⅜	3.83	1.93	1.13	.14	.77	⅝	1	62		
54868BE*		4/0 Weld	½	4.92	3.00	1.13	.14	.77	½	1¼	62		
54819BE	300 kcmil	300 Navy	⅜	5.04	2.80	1.25	.15	.85	⅝	1	66	WHITE	
54870BE		250 Weld, 262, 650/24	½	5.23	3.00	1.25	.15	.85	½	1¼	66		
54820BE			¼	4.29	1.93	1.36	.18	.93	¼	¾	71	RED	
256-30695-1118	350 kcmil		⅜	4.33	1.93	1.36	.18	.93	⅝	1	71		
256-30695-1118P			⅜	4.33	1.93	1.36	.18	.93	⅝	1	71		
54872BE			½	5.40	3.00	1.36	.18	.93	½	1¼	71		
54822BE		400 Navy	¼	4.38	1.93	1.41	.17	.96	¼	¾	76	BLUE	
54821BE	400 kcmil	775/24 = 313 kcmil	⅜	4.43	1.93	1.41	.17	.96	⅝	1	76		
54874BE		300 Flex, 350, 259 Str.	½	5.51	3.00	1.41	.17	.96	½	1¼	76		
54823BE			¼	4.93	1.94	1.61	.22	1.10	¼	¾	87	BROWN	
256-30695-1119	500 kcmil	400 Weld, G, H, I	⅜	5.00	1.93	1.61	.22	1.10	⅝	1	87		
256-30695-1119P		925/24 = 373 kcmil	⅜	5.00	1.93	1.61	.22	1.10	⅝	1	87		
54876BE		350, K	½	6.00	3.00	1.61	.22	1.10	½	1¼	87		
54824BE	600 kcmil	450, I, K	⅜	5.70	2.80	1.75	.24	1.20	⅝	1	94	GREEN	
54878BE		1100/24 = 444 kcmil	½	5.83	3.00	1.75	.24	1.20	½	1¼	94		
54879BE	700 kcmil	1325/24 = 535 kcmil	½	5.83	3.00	1.80	.24	1.25	½	1¼	99	PINK	
256-30695-1222			⅜	5.25	2.06	1.94	.27	1.33	½	1	106	BLACK	
256-30695-1222P	750 kcmil	500, G, H, I, K	⅜	5.25	2.06	1.94	.27	1.33	½	1	106		
54880BE		1325/24 = 535 kcmil	½	6.20	3.00	1.94	.27	1.33	½	1¼	106		
58884BE		1600/24 = 646 kcmil	½	6.16	3.00	1.94	.27	1.33	½	1¼	106		
58826BE	900 kcmil	1925/24 = 777 kcmil	½	6.74	3.00	2.18	.31	1.50	½	1¼	115	YELLOW	
54826BE	1000 kcmil	1000 Navy	⅜	6.49	2.80	2.27	.30	1.55	⅝	1	125	N/A	
54882BE			½	6.66	3.00	2.27	.30	1.55	⅝	1¼	125		
54888BE	1250 kcmil	929, 2300/24	½	7.88	3.00	2.42	.35	1.67	⅝	1¼	140		

† Contact Technical Services for specific stranding listings

* UL® Listed for direct-burial applications

Tooling: pp. F-80-F-100 Die Selector Chart: pp. F-101-F-104

Overview

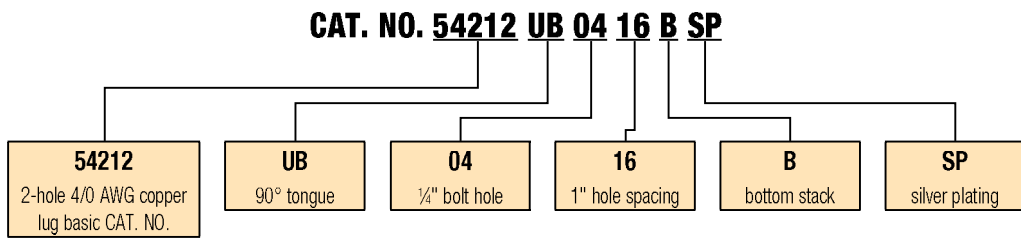
Order Form

Catalog No. _____ Qty. _____
 (For 54100, 54200, 54800 & 54900 Series Copper Lugs Only)

Design Controls and Requirements

All "MADE-UP" catalog numbers start with a standard or basic catalog number and are followed by the customer-required extra features: tongue shape, bolt hole size, distance between bolt holes, stacking, plating and inspection hole (peep hole). A code letter or a number has been assigned to each extra feature. See CODE TABLE.

- Notes:** 1) Lack of any of the extra features on the "MADE-UP" catalog number means that the standard Cat. No. features are prevalent.
 2) If either bolt hole size or distance between bolt holes needs to be changed from standard Cat. No., both code numbers will appear on the "MADE-UP" Cat. No. (See example below)



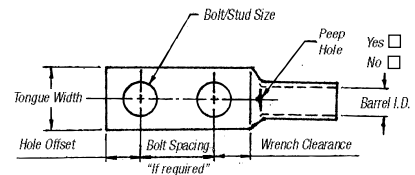
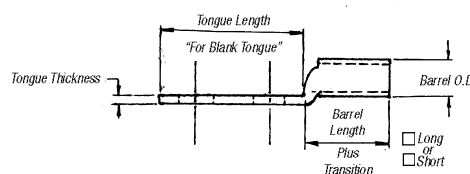
Code Table

TONGUE SHAPE		BOLT HOLES		BOLT HOLE CENTERS		STACKING		FINISH (PLATING)		INSPECTION HOLE (LONG BARREL)		INSPECTION HOLE (SHORT BARREL)		
TYPE	CODE	SIZE	.020	CODE	DISTANCE .015	CODE	TYPE	CODE	TYPE 1	CODE	I.D.	CODE	I.D.	CODE
15°	UI	#8	.173	02	1/2"	08	Top	T**	Silver Plate	SP	Peep Hole	PH	Blind End	BE
30°	UT	#10	.204	03	5/8"	10	Bottom	B	Lead Plate	LP				
45°	UF	1/4"	.281	04	3/4"	12			Nickel Plate	NP				
60°	US	5/16"	.344	05	1/2"	14			Plain Finish	PF				
90°	UB	3/8"	.406	06	1"	16			No Marking	NM				
Blank	BT	1/2"	.531	08	1 1/8"	18			Not QTP if					
(No Bolt Hole)		5/8"	.656	10	1 1/4"	20			suffix other					
		3/4"	.812	12	1 3/8"	22			than - PF or					
		7/8"	.937	14	1 1/2"	24			standard					
		1"	1.062	16	1 5/8"	26			tin plate					
					1 3/4"	28								
					1 7/8"	30								
					2"	32								

* These bolt centers not available for bolt holes larger than 3/8".

** Not required for 45° & 90° top stacking.

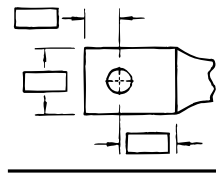
Cable	Code	Weld
<input type="checkbox"/> #8	<input type="checkbox"/> #6	<input type="checkbox"/> #4
<input type="checkbox"/> #2	<input type="checkbox"/> #1	<input type="checkbox"/> 1/0
<input type="checkbox"/> 2/0	<input type="checkbox"/> 3/0	<input type="checkbox"/> 4/0
<input type="checkbox"/> 250 kcmil & up (Code Only)		



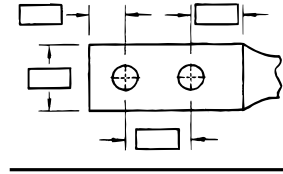
Overview

Tongue Specifications — See Chart "A" For Dimensions

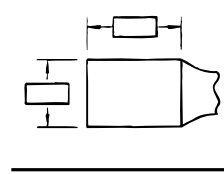
Stud Sizes		
<input type="checkbox"/> #8	<input type="checkbox"/> #10	<input type="checkbox"/> ¼"
<input type="checkbox"/> ⅜"	<input type="checkbox"/> ⅝"	<input type="checkbox"/> ½"
<input type="checkbox"/> ⅞"	<input type="checkbox"/> ¾"	<input type="checkbox"/> ⅝"
<input type="checkbox"/> 1"		



Single Hole



Double Hole



Blank

Chart A

NOMINAL BOLT HOLE SIZE .015	HOLE OFFSET .030	WRENCH CLEARANCE MIN.	TONGUE WIDTH CABLE SIZE										
			#8 CODE #8 WELD	#6 CODE #6 WELD	#4 CODE #4 WELD	#2 CODE #2 WELD	#1 CODE #1 WELD	1/0 CODE 1/0 WELD	2/0 CODE 2/0 WELD	3/0 CODE 3/0 WELD	4/0 CODE 3/0 WELD	250 CODE	
#8	.173	.200	.240	.406	.437	.562	.593	.672	.750	.825	.937	1.030	1.125
#10	.204	.218	.250	.406	.437	.562	.593	.672	.750	.825	.937	1.030	1.125
¼"	.281	.250	.312	.469	.500	.562	.593	.672	.750	.825	.937	1.030	1.125
⅜"	.344	.375	.406	.562	.562	.562	.675	.672	.750	.825	.937	1.030	1.125
⅝"	.406	.375	.440	.578	.578	.594	.675	.672	.750	.825	.937	1.030	1.125
½"	.531	.500	.562	—	—	—	.750	.750	.750	.825	.937	1.030	1.125
⅞"	.656	.625	.875	—	—	—	—	—	—	—	.937	1.030	1.125
¾"	.812	.750	.770	—	—	—	—	—	—	—	—	—	—
⅞*	.937	.875	.890	—	—	—	—	—	—	—	—	—	—
1*	1.062	.937	1.000	—	—	—	—	—	—	—	—	—	—

* These bolt holes available in one-hole lug only.

Chart B

CABLE SIZE	TONGUE THICKNESS	STRAIGHT LUG BARREL LENGTH PLUS TRANSITION		BARREL		DIM "X" STACKED LUGS			DIM "Y"		DIM "H"	
		SHORT	LONG	O.D.	I.D.	STRAIGHT	45°	90°	SHORT	LONG	SHORT	LONG
		#8	.080	.635	.935	.260	.180	.158	.478	.394	.595	.808
#6	.081	.675	.975	.296	.215	.134	.544	.432	.587	.799	.767	1.067
#4	.099	.685	.985	.365	.266	.175	.622	.502	.637	.849	.838	1.138
#2	.108	.815	1.115	.410	.302	.216	.649	.535	.711	.923	.958	1.258
#1	.106	.825	1.275	.467	.361	.212	.731	.592	.710	1.028	.956	1.406
1/0	.125	.975	1.325	.520	.396	.250	.789	.646	.794	1.042	1.075	1.425
2/0	.125	.965	1.315	.571	.446	.250	.859	.696	.829	1.077	1.125	1.475
3/0	.125	1.085	1.435	.632	.507	.250	.946	.757	.900	1.148	1.225	1.575
4/0	.137	1.255	1.705	.701	.564	.274	1.031	.826	1.015	1.333	1.387	1.837
250	.137	1.375	1.925	.766	.629	.274	1.123	.891	1.085	1.474	1.487	2.037
300	.153	1.900	2.675	.850	.660	.459	1.226	.975	1.180	1.726	1.924	2.679
350	.177	2.090	2.896	.926	.720	.531	1.333	1.103	1.267	1.830	2.096	2.896
400	.173	2.460	2.980	.960	.757	.519	1.370	1.085	1.551	1.913	2.484	2.984
500	.218	2.670	3.610	1.100	.852	.654	1.514	1.225	1.629	2.266	2.669	3.619
600	.244	2.900	3.490	1.200	.926	.732	1.630	1.325	1.762	2.147	2.897	3.497
700	.228	2.784	—	1.255	.997	.684	1.662	1.375	1.780	—	3.011	—
750	.270	3.050	3.925	1.330	1.030	.810	1.745	1.455	1.827	2.434	3.050	3.925
800	.266	3.213	—	1.375	1.079	.800	1.728	1.625	1.952	2.787	3.213	4.554
900	.313	3.450	4.550	1.500	1.145	.940	1.900	1.650	2.065	—	1.387	—
1,000	.297	3.356	4.500	1.550	1.203	.890	2.070	1.675	2.031	2.787	1.487	4.506

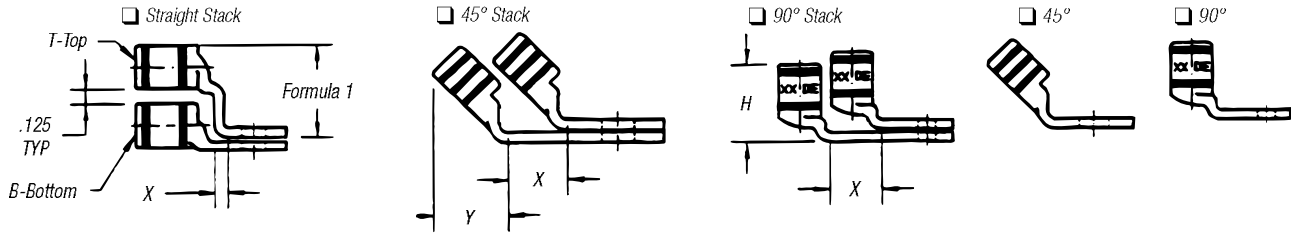
Note: Stacking lugs are available for one bolt only.

Consult Factory: Straight: 700 kcmil & up.

45°: 400 kcmil & up

90°: 500 kcmil & up

Overview



Formula 1 = (.125 + 2 (OD) + .037 – Tongue Thickness)

Chart C

BOLT HOLE SIZE	TONGUE WIDTH .030 CODE CABLE SIZE										
	300 KCMIL 4/0 WELD	350 KCMIL	400 KCMIL	500 KCMIL 400 WELD	600 KCMIL 500 WELD	1325/24	700 KCMIL	750 KCMIL	800 KCMIL	900 KCMIL	1000 KCMIL
#8	—	—	—	—	—	—	—	—	—	—	—
#10	—	—	—	—	—	—	—	—	—	—	—
¼	1.250	1.355	1.410	1.605	1.745	1.805	1.840	1.935	2.010	2.180	2.265
⅓	1.250	1.355	1.410	1.605	1.745	1.805	1.840	1.935	2.010	2.180	2.265
⅕	1.250	1.355	1.410	1.605	1.745	1.805	1.840	1.935	2.010	2.180	2.265
½	1.250	1.355	1.410	1.605	1.745	1.805	1.840	1.935	2.010	2.180	2.265
⅔	1.250	1.355	1.410	1.605	1.745	1.805	1.840	1.935	2.010	2.180	2.265
¾	1.250	1.355	1.410	1.605	1.745	1.805	1.840	1.935	2.010	2.180	2.265
⅞*	—	—	—	1.605	1.745	1.805	1.840	1.935	2.010	2.180	2.265
1*	—	—	—	—	1.745	1.805	1.840	1.935	2.010	2.180	2.265

* These bolt holes available in one-hole lug only.