



ELLIOTT ELECTRIC SUPPLY

We Deliver...Lower Cost, Quality Products, & Personal Service

2310 N. Stallings Dr.
75964-0000, TX Nacogdoches
Phone: 936-569-7941
Fax: 936-560-4685



54905BE 6AWG 1HOLE Cop Lug

Thomas&Betts-Abb Ins Prod

| | |
|------------------|---|
| Catalog Number | 54905BE |
| Manufacturer | Thomas&Betts-Abb Ins Prod |
| Description | Compression Lug, #6 Awg Conductor Size, Non-Insulated, Copper Conductor Material, Blue (Die Color) Insulation Color, 1.65 In Overall Length, Tongue Terminal, 35 KV, 0.02 LB/Ea |
| Weight per unit | 0.0200 (lbs/each) |
| Product Category | Large Terminals & Connectors |

Features

| | |
|-----------------|-------------|
| Cable Size | #6 AWG |
| insulation | None IN |
| Material | COPPER |
| Number of Holes | 1 PH |
| Stud Size | 07847736929 |
| Voltage Rating | Max 35kV |

Material, Color, and Finish

| | |
|-------|------|
| Color | BLUE |
|-------|------|

Descriptions

| | |
|-------------|--------------------|
| Description | 6AWG 1HOLE COP LUG |
|-------------|--------------------|

Manufacturer Information

| | |
|-------|----------------|
| Brand | COLOR-KEYED |
| GTIN | 00786210890098 |
| UPC | 786210890098 |

Taxonomies, Classifications, and Categories

| | |
|----------------------|-----------------------------------|
| Category Description | Comp & Mech Lugs and Butt Splices |
| Type | Long Barrel Copper Lug |

Packaging

| | |
|-----------------|------|
| Carton | 50 |
| Package | 500 |
| Weight Per each | 0.02 |

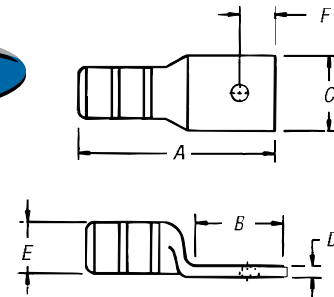
Uses, Certifications, and Standards

| | |
|----------|----------|
| standard | UL E9809 |
|----------|----------|

Compression Connectors for Copper Conductor

One-Hole Lugs — Long Barrel 600V to 35kV

Material: High-Conductivity
Wrought Copper
Finish: Electro Tin Plate



| CAT. NO. | WIRE SIZE | | | DIMENSIONS (IN.) | | | | | | | DIE CODE | DIE COLOR |
|----------------|------------|---|-----------|------------------|------|------|-----|------|---|---------------------|----------|-----------|
| | CODE | FLEX CLASS G, H, I, K, M [†] | BOLT SIZE | A | B | C | D | E | F | | | |
| 54901BE | #14-10 AWG | | ¼ | 1.23 | .56 | .50 | .05 | .20 | ¼ | ERG4002, ERG4005 | "C" NEST | |
| 54929BE* | #8 AWG | 23 Navy, #8 Flex | #10 | 1.65 | .65 | .42 | .08 | .26 | ¼ | 21 | RED | |
| 54930BE* | | 37/24 = 14.9 kcmil | ¼ | 1.65 | .65 | .42 | .08 | .26 | ¼ | 21 | RED | |
| 54904BE* | #6 AWG | #6 Flex, 30 Navy, #5 Weld | #10 | 1.65 | .65 | .44 | .08 | .30 | ¼ | 24 | BLUE | |
| 54905BE* | | | ¼ | 1.65 | .65 | .44 | .08 | .30 | ¼ | 24 | BLUE | |
| 54908BE* | #4 AWG | 40-30 Navy, #4 Weld | #10 | 1.70 | .65 | .52 | .10 | .37 | ¼ | 29 | GRAY | |
| 54906BE* | | #5 91/24 = 36.7 kcmil | ¼ | 1.70 | .65 | .52 | .10 | .37 | ¼ | 29 | GRAY | |
| 54933BE* | #2-3 AWG | 125/24 = 50.4 kcmil | #10 | 1.88 | .65 | .59 | .11 | .41 | ¼ | 33 | BROWN | |
| 54942BE* | | 60 Navy, #3 Weld | ⅜ | 2.03 | .88 | .59 | .11 | .41 | ⅜ | 33 | BROWN | |
| 54945BE | #1 AWG | 75 Navy, #2 Weld | #10 | 1.95 | .65 | .68 | .11 | .47 | ¼ | 37 | GREEN | |
| 54947BE | | 150/24 = 60.5 kcmil | ⅜ | 2.18 | .88 | .68 | .11 | .47 | ⅜ | 37 | GREEN | |
| 54946BE | 1/0 AWG | 100 Navy | #10 | 1.95 | .65 | .75 | .13 | .52 | ¼ | 42 | PINK | |
| 54949BE | | #1 Weld | ⅜ | 2.18 | .88 | .75 | .13 | .52 | ⅜ | 42 | PINK | |
| 54909BE | | 225/24 = 90.8 kcmil | ⅜ | 2.23 | .93 | .75 | .13 | .52 | ⅜ | 42 | PINK | |
| 54950BE | | | ½ | 2.55 | 1.25 | .75 | .13 | .52 | ½ | 42 | PINK | |
| 54910BE | 2/0 AWG | 125 Navy, 1/0 Weld | ⅜ | 2.28 | .93 | .83 | .13 | .57 | ⅜ | 45 | BLACK | |
| 54951BE | | 275/24 = 111 kcmil | ½ | 2.60 | 1.25 | .83 | .13 | .57 | ½ | 45 | BLACK | |
| 54965BE | 3/0 AWG | 325/24 = 131 kcmil, 150 Navy, 2/0 Weld | ½ | 2.70 | 1.25 | .92 | .13 | .63 | ½ | 50 | ORANGE | |
| 256-30695-1252 | 4/0 AWG | 200 Navy | ¼ | 2.35 | .65 | 1.03 | .14 | .70 | ¼ | 54 | PURPLE | |
| 256-30695-1253 | | 450/24 = 182 kcmil | ⅜ | 2.95 | 1.25 | 1.03 | .14 | .70 | ⅜ | 54 | PURPLE | |
| 54970BE | | 3/0 Weld | ½ | 2.95 | 1.25 | 1.03 | .14 | .70 | ½ | 54 | PURPLE | |
| 54913BE | 250 kcmil | 550/24 = 222 kcmil, 250 Navy, 4/0 Weld | ½ | 3.15 | 1.25 | 1.13 | .14 | .77 | ½ | 62 | YELLOW | |
| 54914BE | 300 kcmil | 300 Navy, 250 Weld, 262, 650/24 | ½ | 3.50 | 1.25 | 1.25 | .15 | .85 | ½ | 66 | WHITE | |
| 54915BE | 350 kcmil | | ½ | 3.68 | 1.25 | 1.36 | .18 | .93 | ½ | 71 | RED | |
| 54916BE | 400 kcmil | 400 Navy, 300 Flex | ½ | 3.75 | 1.25 | 1.41 | .17 | .96 | ½ | 76 | BLUE | |
| 54917BE | | 775/24 = 313 kcmil, 350, 254 Str. | ⅜ | 4.03 | 1.58 | 1.41 | .17 | .96 | ⅜ | 76 | BLUE | |
| 54918BE | 500 kcmil | 925/24 = 373 kcmil | ½ | 4.25 | 1.25 | 1.61 | .22 | 1.10 | ½ | 87 | BROWN | |
| 54919BE | | 400 Weld, 350, 3458 Str. | ⅜ | 4.57 | 1.58 | 1.61 | .22 | 1.10 | ⅜ | 87 | BROWN | |
| 54921BE | 600 kcmil | 450 I, K | ½ | 4.10 | 1.25 | 1.75 | .24 | 1.20 | ½ | 94 | GREEN | |
| 54920BE | | 1100/24 = 444 kcmil | ⅜ | 4.39 | 1.58 | 1.75 | .24 | 1.20 | ⅜ | 94 | GREEN | |
| 54979BE | 750 kcmil | 1325/24 = 535 kcmil | ½ | 4.40 | 1.25 | 1.80 | .24 | 1.25 | ½ | 99 | PINK | |
| 54922BE | | 1325/24 = 535 kcmil | ½ | 4.40 | 1.25 | 1.94 | .27 | 1.33 | ½ | 106 | BLACK | |
| 54923BE | | 500 Weld | ⅜ | 4.72 | 1.58 | 1.94 | .27 | 1.33 | ⅜ | 106 | BLACK | |
| 58984BE | 900 kcmil | 1600/24 = 646 kcmil | ⅜ | 4.73 | 1.58 | 1.94 | .27 | 1.33 | ⅜ | 106 | YELLOW | |
| 58926BE | | 1925/24 = 777 kcmil | ⅜ | 5.23 | 1.58 | 2.17 | .30 | 1.50 | ⅜ | 115 | YELLOW | |
| 54928BE | 1000 kcmil | | ⅜ | 5.24 | 1.58 | 2.27 | .30 | 1.55 | ⅜ | 125 | N/A | |
| 256-30695-918 | | | ⅞ | 5.42 | 1.82 | 2.37 | .30 | 1.55 | ⅞ | 125 | N/A | |

[†] Contact Technical Services for specific stranding listings

* UL[®] Listed for direct burial applications

Tooling: pp. F-80-F-100 Die Selector Chart: pp. F-101-F-104

Overview

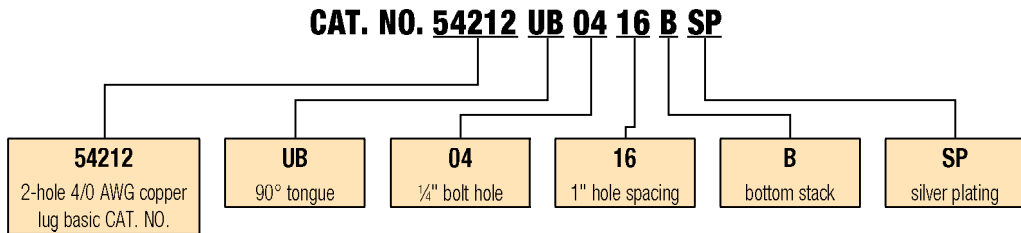
Order Form

Catalog No. _____ Qty. _____
 (For 54100, 54200, 54800 & 54900 Series Copper Lugs Only)

Design Controls and Requirements

All "MADE-UP" catalog numbers start with a standard or basic catalog number and are followed by the customer-required extra features: tongue shape, bolt hole size, distance between bolt holes, stacking, plating and inspection hole (peep hole). A code letter or a number has been assigned to each extra feature. See CODE TABLE.

- Notes:** 1) Lack of any of the extra features on the "MADE-UP" catalog number means that the standard Cat. No. features are prevalent.
 2) If either bolt hole size or distance between bolt holes needs to be changed from standard Cat. No., both code numbers will appear on the "MADE-UP" Cat. No. (See example below)



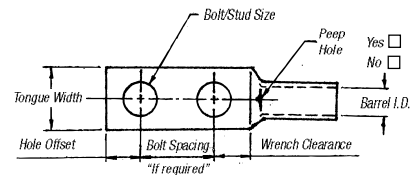
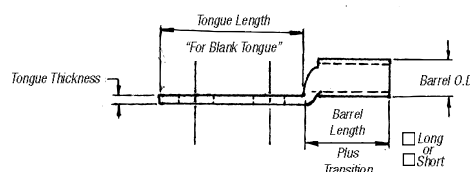
Code Table

| TONGUE SHAPE | | BOLT HOLES | | BOLT HOLE CENTERS | | STACKING | | FINISH (PLATING) | | INSPECTION HOLE (LONG BARREL) | | INSPECTION HOLE (SHORT BARREL) | | |
|----------------|------|------------|-------|-------------------|---------------|----------|--------|------------------|--------------|-------------------------------|-----------|--------------------------------|-----------|------|
| TYPE | CODE | SIZE | .020 | CODE | DISTANCE .015 | CODE | TYPE | CODE | TYPE 1 | CODE | I.D. | CODE | I.D. | CODE |
| 15° | UI | #8 | .173 | 02 | 1/2" | 08 | Top | T** | Silver Plate | SP | Peep Hole | PH | Blind End | BE |
| 30° | UT | #10 | .204 | 03 | 5/8" | 10 | Bottom | B | Lead Plate | LP | | | | |
| 45° | UF | 1/4" | .281 | 04 | 3/4" | 12 | | | Nickel Plate | NP | | | | |
| 60° | US | 5/16" | .344 | 05 | 1/2" | 14 | | | Plain Finish | PF | | | | |
| 90° | UB | 3/8" | .406 | 06 | 1" | 16 | | | No Marking | NM | | | | |
| Blank | BT | 1/2" | .531 | 08 | 1 1/8" | 18 | | | Not QTP if | | | | | |
| (No Bolt Hole) | | 5/8" | .656 | 10 | 1 1/4" | 20 | | | suffix other | | | | | |
| | | 3/4" | .812 | 12 | 1 3/8" | 22 | | | than - PF or | | | | | |
| | | 7/8" | .937 | 14 | 1 1/2" | 24 | | | standard | | | | | |
| | | 1" | 1.062 | 16 | 1 5/8" | 26 | | | tin plate | | | | | |
| | | | | | 1 3/4" | 28 | | | | | | | | |
| | | | | | 1 7/8" | 30 | | | | | | | | |
| | | | | | 2" | 32 | | | | | | | | |

* These bolt centers not available for bolt holes larger than 3/8".

** Not required for 45° & 90° top stacking.

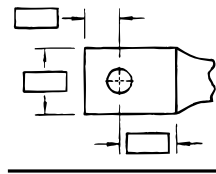
| | | |
|---|-------------------------------|------------------------------|
| Cable | Code <input type="checkbox"/> | |
| | Weld <input type="checkbox"/> | |
| <input type="checkbox"/> #8 | <input type="checkbox"/> #6 | <input type="checkbox"/> #4 |
| <input type="checkbox"/> #2 | <input type="checkbox"/> #1 | <input type="checkbox"/> 1/0 |
| <input type="checkbox"/> 2/0 | <input type="checkbox"/> 3/0 | <input type="checkbox"/> 4/0 |
| <input type="checkbox"/> 250 kcmil & up (Code Only) | | |



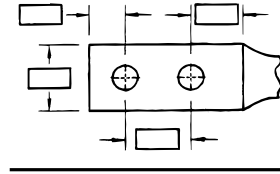
Overview

Tongue Specifications — See Chart "A" For Dimensions

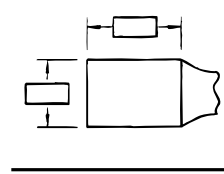
| Stud Sizes | | |
|-----------------------------|------------------------------|-----------------------------|
| <input type="checkbox"/> #8 | <input type="checkbox"/> #10 | <input type="checkbox"/> ¼" |
| <input type="checkbox"/> ⅜" | <input type="checkbox"/> ½" | <input type="checkbox"/> ⅝" |
| <input type="checkbox"/> ¾" | <input type="checkbox"/> ⅞" | <input type="checkbox"/> 1" |



Single Hole



Double Hole



Blank

Chart A

| NOMINAL BOLT HOLE SIZE .015 | HOLE OFFSET .030 | WRENCH CLEARANCE MIN. | TONGUE WIDTH CABLE SIZE | | | | | | | | | | |
|-----------------------------|------------------|-----------------------|-------------------------|-----------------|-----------------|-----------------|-----------------|-------------------|-------------------|-------------------|-------------------|----------|-------|
| | | | #8 CODE #8 WELD | #6 CODE #6 WELD | #4 CODE #4 WELD | #2 CODE #2 WELD | #1 CODE #1 WELD | 1/0 CODE 1/0 WELD | 2/0 CODE 2/0 WELD | 3/0 CODE 3/0 WELD | 4/0 CODE 4/0 WELD | 250 CODE | |
| #8 | .173 | .200 | .240 | .406 | .437 | .562 | .593 | .672 | .750 | .825 | .937 | 1.030 | 1.125 |
| #10 | .204 | .218 | .250 | .406 | .437 | .562 | .593 | .672 | .750 | .825 | .937 | 1.030 | 1.125 |
| ¼" | .281 | .250 | .312 | .469 | .500 | .562 | .593 | .672 | .750 | .825 | .937 | 1.030 | 1.125 |
| ⅜" | .344 | .375 | .406 | .562 | .562 | .562 | .675 | .672 | .750 | .825 | .937 | 1.030 | 1.125 |
| ½" | .406 | .375 | .440 | .578 | .578 | .594 | .675 | .672 | .750 | .825 | .937 | 1.030 | 1.125 |
| ⅝" | .531 | .500 | .562 | — | — | — | .750 | .750 | .750 | .825 | .937 | 1.030 | 1.125 |
| ¾" | .656 | .625 | .875 | — | — | — | — | — | — | — | .937 | 1.030 | 1.125 |
| ⅞" | .812 | .750 | .770 | — | — | — | — | — | — | — | — | — | — |
| 1" | .937 | .875 | .890 | — | — | — | — | — | — | — | — | — | — |
| 1* | 1.062 | .937 | 1.000 | — | — | — | — | — | — | — | — | — | — |

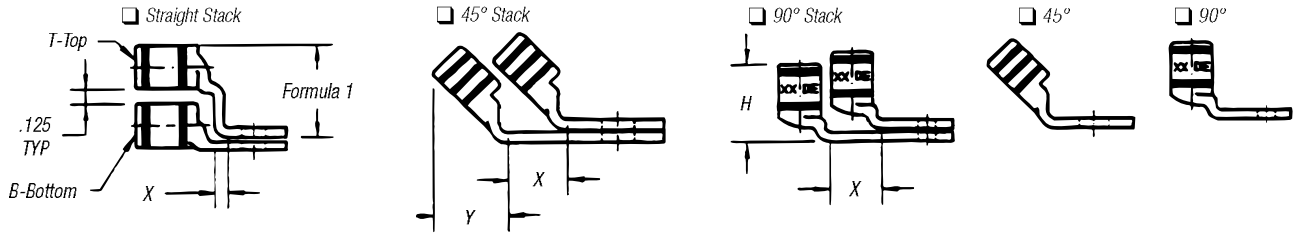
* These bolt holes available in one-hole lug only.

Chart B

| CABLE SIZE | TONGUE THICKNESS | STRAIGHT LUG BARREL LENGTH PLUS TRANSITION | | BARREL | | DIM "X" STACKED LUGS | | | DIM "Y" | | DIM "H" | |
|------------|------------------|--|-------|--------|-------|----------------------|-------|-------|---------|-------|---------|-------|
| | | SHORT | LONG | O.D. | I.D. | STRAIGHT | 45° | 90° | SHORT | LONG | SHORT | LONG |
| | | #8 | .080 | .635 | .935 | .260 | .180 | .158 | .478 | .394 | .595 | .808 |
| #6 | .081 | .675 | .975 | .296 | .215 | .134 | .544 | .432 | .587 | .799 | .767 | 1.067 |
| #4 | .099 | .685 | .985 | .365 | .266 | .175 | .622 | .502 | .637 | .849 | .838 | 1.138 |
| #2 | .108 | .815 | 1.115 | .410 | .302 | .216 | .649 | .535 | .711 | .923 | .958 | 1.258 |
| #1 | .106 | .825 | 1.275 | .467 | .361 | .212 | .731 | .592 | .710 | 1.028 | .956 | 1.406 |
| 1/0 | .125 | .975 | 1.325 | .520 | .396 | .250 | .789 | .646 | .794 | 1.042 | 1.075 | 1.425 |
| 2/0 | .125 | .965 | 1.315 | .571 | .446 | .250 | .859 | .696 | .829 | 1.077 | 1.125 | 1.475 |
| 3/0 | .125 | 1.085 | 1.435 | .632 | .507 | .250 | .946 | .757 | .900 | 1.148 | 1.225 | 1.575 |
| 4/0 | .137 | 1.255 | 1.705 | .701 | .564 | .274 | 1.031 | .826 | 1.015 | 1.333 | 1.387 | 1.837 |
| 250 | .137 | 1.375 | 1.925 | .766 | .629 | .274 | 1.123 | .891 | 1.085 | 1.474 | 1.487 | 2.037 |
| 300 | .153 | 1.900 | 2.675 | .850 | .660 | .459 | 1.226 | .975 | 1.180 | 1.726 | 1.924 | 2.679 |
| 350 | .177 | 2.090 | 2.896 | .926 | .720 | .531 | 1.333 | 1.103 | 1.267 | 1.830 | 2.096 | 2.896 |
| 400 | .173 | 2.460 | 2.980 | .960 | .757 | .519 | 1.370 | 1.085 | 1.551 | 1.913 | 2.484 | 2.984 |
| 500 | .218 | 2.670 | 3.610 | 1.100 | .852 | .654 | 1.514 | 1.225 | 1.629 | 2.266 | 2.669 | 3.619 |
| 600 | .244 | 2.900 | 3.490 | 1.200 | .926 | .732 | 1.630 | 1.325 | 1.762 | 2.147 | 2.897 | 3.497 |
| 700 | .228 | 2.784 | — | 1.255 | .997 | .684 | 1.662 | 1.375 | 1.780 | — | 3.011 | — |
| 750 | .270 | 3.050 | 3.925 | 1.330 | 1.030 | .810 | 1.745 | 1.455 | 1.827 | 2.434 | 3.050 | 3.925 |
| 800 | .266 | 3.213 | — | 1.375 | 1.079 | .800 | 1.728 | 1.625 | 1.952 | 2.787 | 3.213 | 4.554 |
| 900 | .313 | 3.450 | 4.550 | 1.500 | 1.145 | .940 | 1.900 | 1.650 | 2.065 | — | 1.387 | — |
| 1,000 | .297 | 3.356 | 4.500 | 1.550 | 1.203 | .890 | 2.070 | 1.675 | 2.031 | 2.787 | 1.487 | 4.506 |

Note: Stacking lugs are available for one bolt only.
 Consult Factory: Straight: 700 kcmil & up.
 45°: 400 kcmil & up
 90°: 500 kcmil & up

Overview



Formula 1 = (.125 + 2 (OD) + .037 – Tongue Thickness)

Chart C

| BOLT HOLE SIZE | TONGUE WIDTH .030 CODE CABLE SIZE | | | | | | | | | | |
|----------------|--------------------------------------|-----------|-----------|-----------------------|-----------------------|---------|--------------|--------------|--------------|--------------|---------------|
| | 300 KCMIL 4/0 WELD | 350 KCMIL | 400 KCMIL | 500 KCMIL 400 WELD | 600 KCMIL 500 WELD | 1325/24 | 700 KCMIL | 750 KCMIL | 800 KCMIL | 900 KCMIL | 1000 KCMIL |
| #8 | — | — | — | — | — | — | — | — | — | — | — |
| #10 | — | — | — | — | — | — | — | — | — | — | — |
| ¼ | 1.250 | 1.355 | 1.410 | 1.605 | 1.745 | 1.805 | 1.840 | 1.935 | 2.010 | 2.180 | 2.265 |
| ⅓ | 1.250 | 1.355 | 1.410 | 1.605 | 1.745 | 1.805 | 1.840 | 1.935 | 2.010 | 2.180 | 2.265 |
| ⅕ | 1.250 | 1.355 | 1.410 | 1.605 | 1.745 | 1.805 | 1.840 | 1.935 | 2.010 | 2.180 | 2.265 |
| ½ | 1.250 | 1.355 | 1.410 | 1.605 | 1.745 | 1.805 | 1.840 | 1.935 | 2.010 | 2.180 | 2.265 |
| ¾ | 1.250 | 1.355 | 1.410 | 1.605 | 1.745 | 1.805 | 1.840 | 1.935 | 2.010 | 2.180 | 2.265 |
| ⅞ | — | — | — | 1.605 | 1.745 | 1.805 | 1.840 | 1.935 | 2.010 | 2.180 | 2.265 |
| 1* | — | — | — | — | 1.745 | 1.805 | 1.840 | 1.935 | 2.010 | 2.180 | 2.265 |

* These bolt holes available in one-hole lug only.