



ELLIOTT ELECTRIC SUPPLY

We Deliver...Lower Cost, Quality Products, & Personal Service

3804 South Street
75964-7263, TX Nacogdoches
Phone: 936-569-7941
Fax: 936-560-4685



60134 2/0 Awg Olive Comp Lug

Thomas&Betts-Abb Ins Prod

Catalog Number	60134
Manufacturer	Thomas&Betts-Abb Ins Prod
Description	
Weight per unit	0.1400 (lbs/each)
Product Category	Large Terminals & Connectors

Features

Cable Size	2/0 AWG
insulation	None IN
Material	ALUMINUM
Number of Holes	1 PH
Stud Size	07847736929
Voltage Rating	Max 35kV

Material, Color, and Finish

Color	OLIVE
-------	-------

Descriptions

Description	2/0 AWG OLIVE COMP LUG
Product Type	AI TP 1HL Lug Long BRL 2/0 1/4B Oliv

Manufacturer Information

Brand	COLOR-KEYED
GTIN	00786210601342
Manufacturers Part Number	60134
UPC	786210601342

Taxonomies, Classifications, and Categories

Category Description	Comp & Mech Lugs and Butt Splices
Type	Long Barrel Aluminum Lug

Packaging

Carton	5
Package	50
Weight Per each	0.14

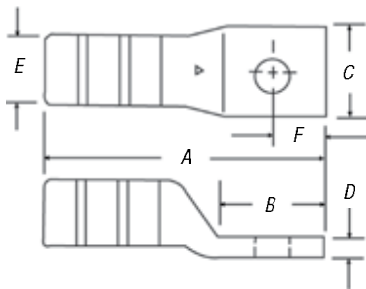
Uses, Certifications, and Standards

standard	UL E9809
----------	----------

Connectors for Aluminum/Copper Code Conductor

Perform equally well on both aluminum and copper conductors.

One-Hole Lugs



- For 90° C, 600V to 35kV applications
- Easily matched to the correct Blackburn® installing die featuring the Color-Keyed® system for positive compressions
- Hardened steel dies compress connector around cable, changing round strands to polygonal shapes and cold flowing strands and connector into a solid, homogenous mass
- Long compression areas ensure complete contact
- Multiple compressions prevent creep of aluminum conductors
- Filled with high-temperature oxide-inhibitor compound
- Electro-tin plating prevents electrolytic corrosion of copper to ensure lowest contact resistance

Material: High-Conductivity Wrought Aluminum

Finish: Electro-Tin Plate

CAT. NO.	CABLE SIZE AL/CU	BOLT SIZE (IN.)	DIMENSIONS						COLOR CODE	DIE CODE
			A	B	C	D	E	F		
60096		#10	1.09	.56	.41	.06	.270	.22		
60097	#10 AWG	¼	1.31	.72	.43	.07	.270	.34	21	RED
60099		⅜	1.53	.93	.58	.06	.270	.44		
60101		#10	1.22	.56	.41	.09	.280	.22		
60102	#8 AWG	¼	1.38	.71	.44	.09	.280	.34	24	BLUE
60103		⅜	1.56	.91	.60	.06	.280	.44		
60104-TB		⅝	1.60	.93	.60	.06	.280	.44		
60106		#10	1.52	.59	.47	.13	.350	.22		
60107	#6 AWG	¼	1.67	.75	.47	.13	.350	.34	29	GRAY
60108		⅜	1.83	.91	.63	.09	.350	.44		
60109		⅝	1.86	.93	.63	.09	.350	.44		
60112		¼	1.81	.75	.64	.19	.460	.34		
60113	#4 AWG	⅜	2.00	.91	.64	.19	.460	.44	37	GREEN
60114		⅝	2.03	.93	.64	.19	.460	.44		
60116		¼	1.91	.75	.72	.19	.510	.34		
60117	#2 AWG	⅜	2.06	.91	.72	.19	.510	.44	42	PINK
60118		⅝	2.09	.93	.72	.19	.510	.44		
60120		½	2.25	1.41	.88	.13	.510	.69		
60122		¼	2.30	.81	.75	.19	.560	.34		
60123	#1 AWG	⅜	2.39	.91	.75	.19	.560	.44	45	GOLD
60124		⅝	2.42	.93	.75	.19	.560	.44		
60126		½	2.89	1.41	.88	.16	.560	.69		
60128		¼	2.36	.81	.88	.19	.620	.34		
60129	1/0	⅜	2.51	.97	.88	.19	.620	.44	50	TAN
60130		⅝	2.51	.97	.88	.19	.620	.44		
60132		½	2.95	1.41	.94	.19	.620	.69		
60134		¼	2.48	.87	.97	.22	.700	.34		
60135	2/0	⅜	2.64	1.03	.97	.22	.700	.44	54	OLIVE
60136		⅝	2.64	1.03	.97	.22	.700	.44		
60138		½	3.10	1.41	1.03	.22	.700	.69		
60140		¼	2.58	.87	1.06	.22	.770	.34		
60141	3/0	⅜	2.83	1.09	1.06	.22	.770	.44	60	RUBY
60142		⅝	2.83	1.09	1.06	.22	.770	.44		
60144		½	3.15	1.41	1.06	.22	.770	.69		
60147		⅜	3.53	.88	1.21	.25	.857	.38		
60148	4/0	⅝	3.58	.93	1.21	.25	.857	.38	66	WHITE
60150		½	3.90	1.25	1.21	.25	.857	.50		
60151		⅝	4.65	2.00	1.21	.25	.857	.75		
60154		¾	3.73	.93	1.29	.27	.917	.38		
60156	250 kcmil	½	4.05	1.25	1.29	.27	.917	.50	71	RED
60157		⅝	4.80	2.00	1.29	.27	.917	.75		
60159		⅜	3.75	.88	1.39	.28	.990	.38		
60160	300 kcmil	⅝	3.80	.93	1.39	.28	.990	.38	76	BLUE
60162		½	4.13	1.25	1.39	.28	.990	.50		
60165		½	4.83	1.25	1.53	.33	1.090	.50		
60166	350 kcmil	⅝	5.58	2.00	1.53	.33	1.090	.75	87	BROWN
60168	400 kcmil	½	4.95	1.25	1.65	.38	1.180	.50	94	GREEN
60171		½	4.95	1.25	1.79	.38	1.280	.50		
60172	500 kcmil	⅝	5.70	2.00	1.79	.38	1.280	.75	99	PINK
60174	600 kcmil	¾	5.83	2.00	1.92	.37	1.360	.75	106	BLACK
60176	700 kcmil	¾	5.95	2.00	2.04	.38	1.440	.75	112	PURPLE
60178	750 kcmil	¾	6.03	2.00	2.13	.40	1.500	.75	115	YELLOW
60184	1000 kcmil	¾	6.78	2.00	2.50	.50	1.770	.75	140	N/A

Tooling: pp. F-80-F-100

Die Selector Chart: pp. F-101-F-104

Connectors & Grounding — Blackburn® Compression Connectors Featuring the Color-Keyed® System