

E26 6" Trim Series

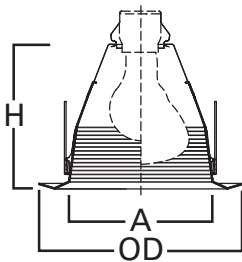
DESCRIPTION

Full cone baffle trim with self-flange in the 6" trim family for use in recessed downlighting. Compatible for use in Halo and other housings.

Catalog #		Type
Project		
Comments		Date
Prepared by		

SPECIFICATION FEATURES

- Full cone baffle for BR30, BR40, A19, PAR30 and PAR38 lamps
- Torsion spring retention
- Socket supporting baffle
- Self-flanged trim ring sized to hide gaps caused by construction tolerances
- Makes installation Air-Tite, with any compatible housing



Dimensions:

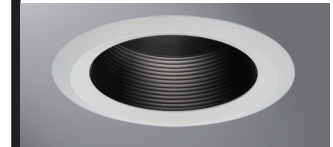
A: 5-7/16" [138mm]
 H: 5-3/8" [137mm]
 OD: 7-3/4" [197mm]

Housings		Max Lamp Compatibility
H7ICT	H7RICT	6125WB: 43W A19, 75W PAR30S, 75W PAR30L, 65W PAR38, 65W BR30, 90W BR40
H7ICAT	H7RICAT	6125BB, 6125BKBB: 43W A19, 75W PAR30S, 75W PAR30L, 65W PAR38, 65W BR30, 85W BR40
E7ICAT	E7RICAT	
H7ICTNB		6125WB: 43W A19, 75W PAR30S, 75W PAR30L, 65W PAR38, 65W BR30, 90W BR40
H7ICATNB		6125BB, 6125BKBB: 43W A19, 75W PAR30S, 75W PAR30L, 65W PAR38, 65W BR30, 85W BR40
E7ICATNB		
H7T	E7TAT	100W A19, 150W A21, 75W PAR30S, 75W PAR30L, 150W PAR38, 85W BR30, 120W BR40
H7RT	E7RTAT	100W A19, 150W A21, 75W PAR30S, 75W PAR30L, 100W PAR38, 85W BR30, 120W BR40
H7TCP		6125WB: 75W A19, 150W A21, 75W PAR30S, 75W PAR30L, 120W PAR38, 65W BR30 6125BB, 6125BKBB: 75W A19, 150W A21, 75W PAR30S, 75W PAR30L, 100W PAR38, 65W BR30
H7TNB	E7TATNB	100W A19, 150W A21, 75W PAR30S, 75W PAR30L, 150W PAR38, 85W BR30, 120W BR40

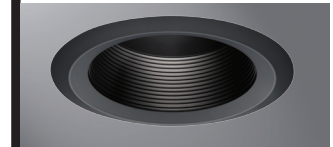
Compatible with Halogen, Incandescent, LED* or CFL* lamps.



6125WB
White Baffle,
White Trim



6125BB
Black Baffle,
White Trim



6125BKBB
Black Baffle,
Black Trim

6125

6-Inch Full Cone Baffle,
Self-flange



ORDERING INFORMATION

SAMPLE NUMBER: 6125WB

Trim	Finish
6125= 6" Full Cone Baffle, Self-flange	WB =White baffle and trim BB =Black baffle, White trim BKBB =Black baffle and trim

HALO HOUSING COMPATIBILITY

Trim #	Style	H7ICT	H7ICAT	H7RICT	H7RICAT	E7ICAT	E7RICAT	H7UICAT	H7ICTNB
6125	Baffle	•	•	•	•	•	•	—	•
		H7ICATNB	E7ICATNB	H27ICAT	H27RICAT	E27ICAT	E27RICAT		
		•	•	—	—	—	—		
		H7T	H7TCP	H7RT	E7TAT	E7RTAT	H7TNB	E7TATNB	H27T
		•	—	•	•	•	•	•	—
		H27RT	E27TAT	E27RTAT					
		—	—	—					

For use in select other's housings, refer to U.L. classification list at www.eaton.com/lighting/legal.

*UL1993 listed LED & CFL equivalent lamps permitted. Consult lamp manufacturer for conditions of use. Eaton does not warranty the lamp.



For use in Halo listed housings.



Select trims are classified for use in others housings. See www.eaton.com/lighting/legal.