



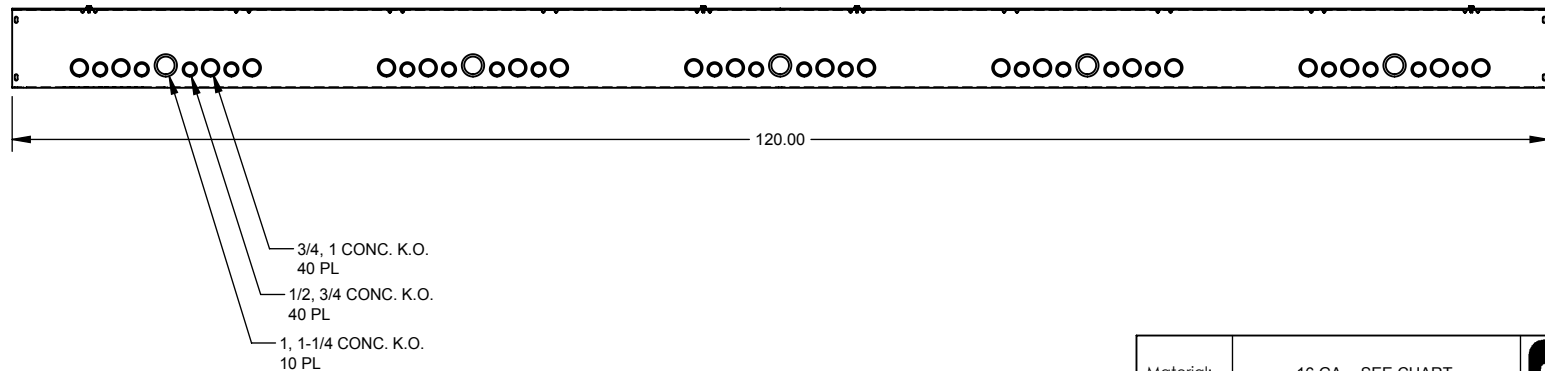
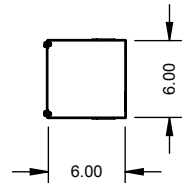
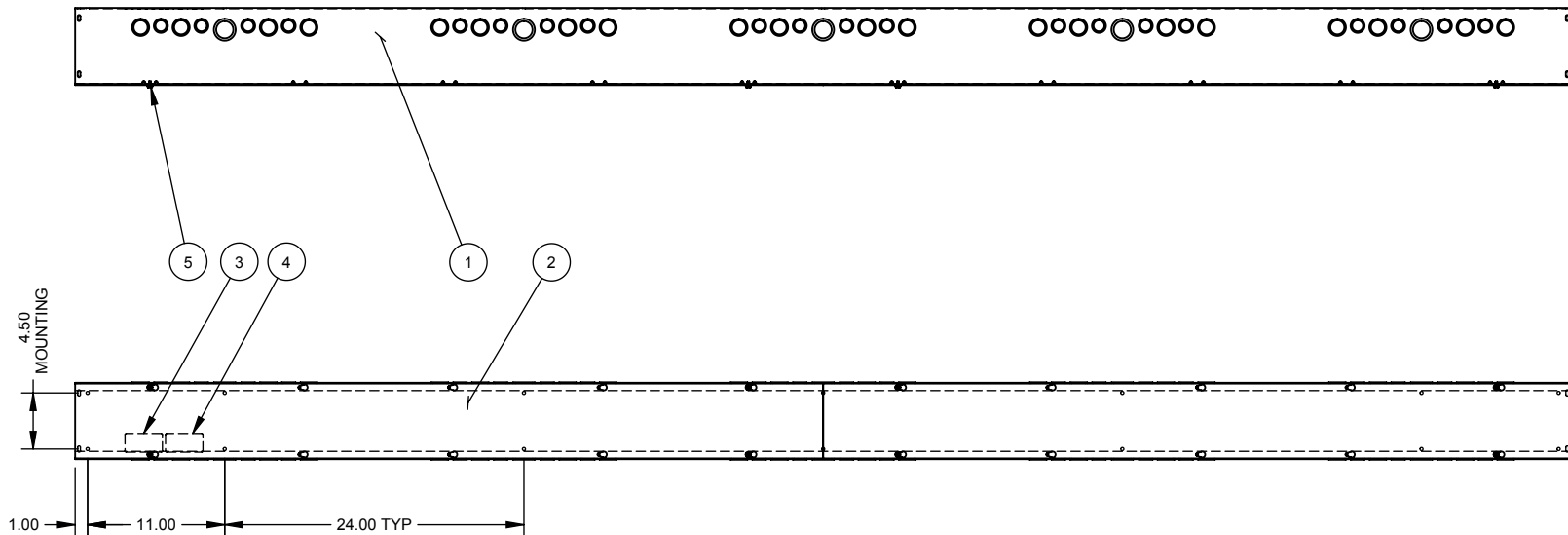
Catalog Number: 66120-GSC1-NK
Item Description: N1 SCREW CVR GUTTER NK
UPC Code: 784572107793

Brand Name: Milbank
Type: Lay In Wireway
Application: Wireway
Standard: UL Listed, Type 1
Cover Type: Screw Cover
Enclosure: Indoor Enclosure
Nominal Cross Section: 6x6
Straight Section Length: 120
Material: Steel with Powder Coat Finish
Finish: ANSI 61 Gray
Knockouts: False





Utility requirements may vary. Always consult the serving utility for their requirements prior to ordering or installing this equipment. This product must always be installed by a licensed electrician. Installation of this equipment may require local electrical inspector approval.

CATALOG#	LABEL#	SUFFIX	BACK #	COVER #	SUFFIX	FINISH	ITEM NO.	QTY.	PART NUMBER	DESCRIPTION
66120-GSC1-()	1002943	-SU	1001447	1003281	NONE	PAINTED	1	1	(SEE CHART)	BACK
RC-66120-GSC1-()	1125051	-SUC	1128954	1128931	-NP	NOT PAINTED	2	2	(SEE CHART)	PLATE/COVER
SPS-6610()	1132575	-SO	1128955	1011779			3	1	(SEE CHART)	LABEL (U/L LISTING)
		-SUNK	1001417	1003281			4	1	1002942	LABEL, RATING
		-NK	1098478	1011779			5	8	1001290	SCREW, 10-32 X 5/16
		-SUNKC	1128956	1128931			6	4	1002880	BAG ASSY.



NOTE:
1. PLACE BAG ASS'Y INSIDE ENCLOSURE. (NOT SHOWN)

Material:		16 GA. - SEE CHART		 MILBANK MANUFACTURING CO. General Offices: Kansas City, MO			
Finish:		SEE CHART					
Tolerances: Unless Specified Otherwise X.X ±.1 X.XX ±.03 X.XXX ±.015 X° ±2°		 Third Angle Projection		Title:		SCREW COVER WIREWAY 6 x 6 x 120, TYPE 1 NEMA ENCLOSURE	
				Catalog No.:		(SEE CHART)	
				Customer:		MILBANK STANDARD	
				Drawing No.:		549-11	
B Scale:		NTS		Checked By:			
Drawn By:		DY		Approved By:			
Date:		05/24/02		Sheet		1 of 1	

E	8-29-07	ADDED BACK & COVER CHART ECO. 15946	DL	F	8/25/08	1001290 QTY. WAS 9 (MECO #17608)	EB
E1	5/1/08	ADDED CHART & REMOVED NOTE #2(ECO.17139)	JLT				



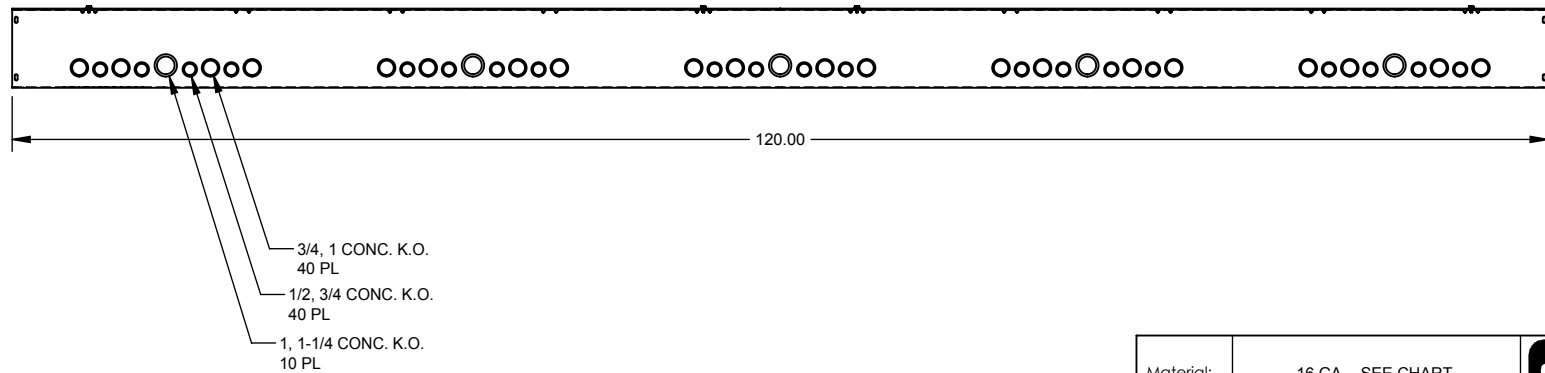
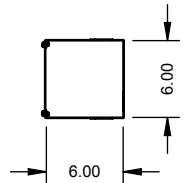
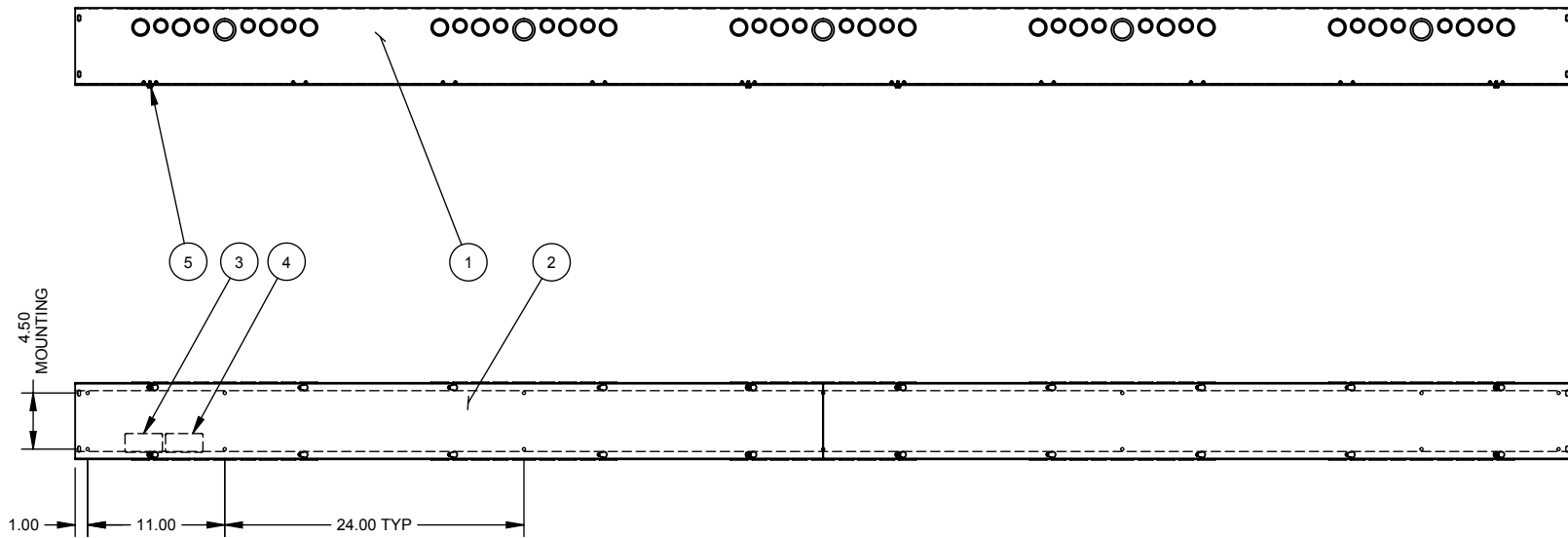
Catalog Number: 66120-GSC1-NK
Item Description: N1 SCREW CVR GUTTER NK
UPC Code: 784572107793

Brand Name: Milbank
Type: Lay In Wireway
Application: Wireway
Standard: UL Listed, Type 1
Cover Type: Screw Cover
Enclosure: Indoor Enclosure
Nominal Cross Section: 6x6
Straight Section Length: 120
Material: Steel with Powder Coat Finish
Finish: ANSI 61 Gray
Knockouts: False

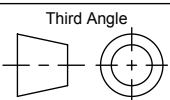


Utility requirements may vary. Always consult the serving utility for their requirements prior to ordering or installing this equipment. This product must always be installed by a licensed electrician. Installation of this equipment may require local electrical inspector approval.

CATALOG#	LABEL#	SUFFIX	BACK #	COVER #	SUFFIX	FINISH	ITEM NO.	QTY.	PART NUMBER	DESCRIPTION
66120-GSC1-()	1002943	-SU	1001447	1003281	NONE	PAINTED	1	1	(SEE CHART)	BACK
RC-66120-GSC1-()	1125051	-SUC	1128954	1128931	-NP	NOT PAINTED	2	2	(SEE CHART)	PLATE/COVER
SPS-6610()	1132575	-SO	1128955	1011779			3	1	(SEE CHART)	LABEL (U/L LISTING)
		-SUNK	1001417	1003281			4	1	1002942	LABEL, RATING
		-NK	1098478	1011779			5	8	1001290	SCREW, 10-32 X 5/16
		-SUNKC	1128956	1128931			6	4	1002880	BAG ASSY.



NOTE:
1. PLACE BAG ASS'Y INSIDE ENCLOSURE. (NOT SHOWN)

Material:	16 GA. - SEE CHART	MILBANK MANUFACTURING CO. General Offices: Kansas City, MO	
Finish:	SEE CHART	Title:	SCREW COVER WIREWAY 6 x 6 x 120, TYPE 1 NEMA ENCLOSURE
Tolerances: Unless Specified Otherwise X.X ±.1 X.XX ±.03 X.XXX ±.015 X" ±2"		Catalog No.:	(SEE CHART)
Third Angle  Projection		Customer:	MILBANK STANDARD
Scale:		Drawing No.:	549-11
NTS	Checked By:	Date:	05/24/02
Drawn By:	DY	Approved By:	Sheet 1 of 1

E	8-29-07	ADDED BACK & COVER CHART ECO. 15946	DL	F	8/25/08	1001290 QTY. WAS 9 (MECO #17608)	EB
E1	5/1/08	ADDED CHART & REMOVED NOTE #2(ECO.17139)	JLT				