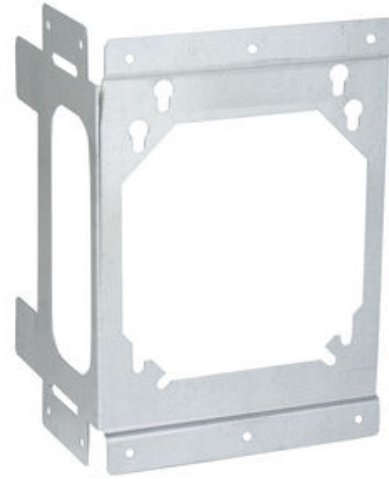




## 2-Point Box Mounting Bracket for Left or Right Side Stud Mount

By Raco  
Catalog # 9018



2-Point Box Mounting Bracket for Left or Right Side Stud Mount

### Features

- Dual-point mounting, right or left side of stud. Perfect for prefab applications
- Mounts 4 in. or 4-11/16 in. sq. box to 2-1/2 in., 3-1/2 in. or 6 in. depths
- Far-side support leg for wall cavities up to 6 in. thick part of bracket
- Support leg cannot be bent by other trades once properly mounted with junction box

### General

Accessory Type	Box
EU RoHS Indicator	Contact Manufacturer
Type	Mounting Bracket
UPC	050169090183

### Dimensions

Dimensions	3.688 in x 6.625 in x 4.625 in
Height	4.625 in
Length	3.688 in
Weight	0.19 lb
Width	6.625 in

### Certifications And Compliance

Certified Listed                      cULus Listed

### Logistics

Carton Quantity	100
Minimum Pack Quantity	100
Pallet Quantity	9000

### Product Assets

[Brochures - Product Solutions for Electrical Prefabrication](#)  
[Catalogs - RACO / TayMac / Bell Full Catalog](#)  
[SDS - HCC\\_SDS](#)  
[Sell Sheets - Box Positioning Products](#)  
[Terms and Conditions - HCC Terms & Conditions](#)



A proud member of the Hubbell Family.

©2024 Hubbell Incorporated. All rights reserved.  
RACO-9018-SPEC-EN | REV 5/2024