



ELLIOTT ELECTRIC SUPPLY

We Deliver...Lower Cost, Quality Products, & Personal Service

3804 South Street
75964-7263, TX Nacogdoches
Phone: 936-569-7941
Fax: 936-560-4685



A6612RT 6X6X12 N3R SC Wire Trough

Hoffman Enclosures, Inc.

Catalog Number	A6612RT
Manufacturer	Hoffman Enclosures, Inc.
Description	
Weight per unit	8.4 (lbs/each)
Product Category	Nema Type 3R Trough & Gutter

Features

Material	Steel IN
----------	----------

Dimensions and Weight

Size	6.00x6.00x12.00 in
------	--------------------

Descriptions

Description	6X6X12 N3R SC WIRE TROUGH
Product Type	Wiring Trough 6.00X6.00X12.00
Special Features	16 or 14 gauge plated steel

Manufacturer Information

Brand	Nvent Hoffman
GTIN	00783510382605
Manufacturers Part Number	A6612RT
sub brand	Hoffman
UPC	783510382605

Taxonomies, Classifications, and Categories

Category Description	STEEL WIRE WAY JUNCTION BOXES
Type	Wiring Trough, NEMA Type 3R

Packaging

Carton	1
Weight Per each	8.4

Uses, Certifications, and Standards

Application	Available in a range of sizes, this wiring trough meets basic functionality requirements for applications subjected to moisture.
standard	UL 870 Listed, File No. E27524, Raintight, cUL CSA C22.2 No. 26 Listed, File No. E27524, Raintight, NEMA/EEMAC Type 3R, IEC 60529, IP32

WIRING TROUGH, NEMA TYPE 3R



INDUSTRY STANDARDS

UL 870 Listed; File No. E27524; Raintight
 cUL CSA C22.2 No. 26 Listed; File No. E27524; Raintight

NEMA/EEMAC Type 3R
 IEC 60529, IP32

APPLICATION

Available in a range of sizes, this wiring trough meets basic functionality requirements for applications subjected to moisture.

FEATURES

- Drip shield top and seam-free sides, front, and back
- Slip-on removable cover
- Embossed mounting holes on back of enclosure
- Provision for padlocking
- No gasketing or knockouts

SPECIFICATIONS

- 16 or 14 gauge plated steel

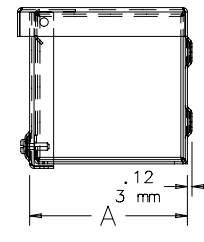
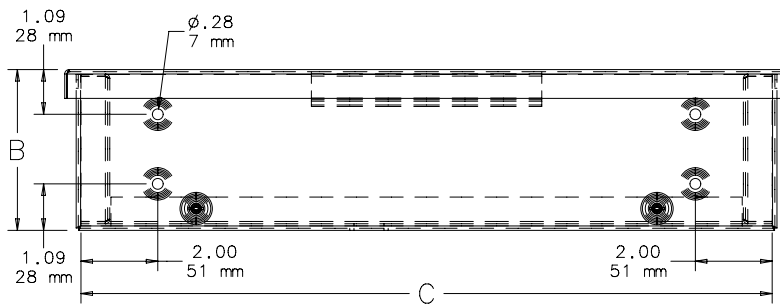
FINISH

ANSI 61 gray polyester powder paint finish inside and out over pretreated surfaces.

ACCESSORIES

See also *Accessories chapter*.
 Touch-Up Paint (ATPPY61)

BULLETIN: F40PT



87552191

Standard Product

Catalog Number	AxBxC in.	AxBxC mm	Gauge
A4412RT	4.00 x 4.00 x 12.00	102 x 102 x 305	16
A4418RT	4.00 x 4.00 x 18.00	102 x 102 x 457	16
A4424RT	4.00 x 4.00 x 24.00	102 x 102 x 610	16
A4436RT	4.00 x 4.00 x 36.00	102 x 102 x 914	16
A4448RT	4.00 x 4.00 x 48.00	102 x 102 x 1219	16
A4460RT	4.00 x 4.00 x 60.00	102 x 102 x 1524	16
A4472RT	4.00 x 4.00 x 72.00	102 x 102 x 1829	16
A6612RT	6.00 x 6.00 x 12.00	152 x 152 x 305	16
A6618RT	6.00 x 6.00 x 18.00	152 x 152 x 457	16
A6624RT	6.00 x 6.00 x 24.00	152 x 152 x 610	16
A6636RT	6.00 x 6.00 x 36.00	152 x 152 x 914	16
A6648RT	6.00 x 6.00 x 48.00	152 x 152 x 1219	16
A6660RT	6.00 x 6.00 x 60.00	152 x 152 x 1524	16
A6672RT	6.00 x 6.00 x 72.00	152 x 152 x 1829	16
A8812RT	8.00 x 8.00 x 12.00	203 x 203 x 305	14
A8824RT	8.00 x 8.00 x 24.00	203 x 203 x 610	14
A8836RT	8.00 x 8.00 x 36.00	203 x 203 x 914	14
A8848RT	8.00 x 8.00 x 48.00	203 x 203 x 1219	14
A8860RT	8.00 x 8.00 x 60.00	203 x 203 x 1524	14
A8872RT	8.00 x 8.00 x 72.00	203 x 203 x 1829	14
A8896RT	8.00 x 8.00 x 96.00	203 x 203 x 2438	14
A88116RT	8.00 x 8.00 x 116.00	203 x 203 x	14
A101024RT	10.00 x 10.00 x 24.00	254 x 254 x 610	14
A101036RT	10.00 x 10.00 x 36.00	254 x 254 x 914	14
A101048RT	10.00 x 10.00 x 48.00	254 x 254 x 1219	14
A101060RT	10.00 x 10.00 x 60.00	254 x 254 x 1524	14
A101072RT	10.00 x 10.00 x 72.00	254 x 254 x 1829	14
A101096RT	10.00 x 10.00 x 96.00	254 x 254 x	14
A1010116RT	10.00 x 10.00 x 116.00	254 x 254 x 2946	14
A121224RT	12.00 x 12.00 x 24.00	305 x 305 x 610	14
A121236RT	12.00 x 12.00 x 36.00	305 x 305 x 914	14
A121248RT	12.00 x 12.00 x 48.00	305 x 305 x 1219	14
A121260RT	12.00 x 12.00 x 60.00	305 x 305 x 1524	14
A121272RT	12.00 x 12.00 x 72.00	305 x 305 x 1829	14
A121284RT	12.00 x 12.00 x 84.00	305 x 305 x 2134	14
A121296RT	12.00 x 12.00 x 96.00	305 x 305 x 2438	14
A1212116RT	12.00 x 12.00 x 116.00	305 x 305 x 2946	14
A141448RT	14.00 x 14.00 x 48.00	356 x 356 x 1219	14
A141472RT	14.00 x 14.00 x 72.00	356 x 356 x 1829	14
A141484RT	14.00 x 14.00 x 84.00	356 x 356 x 2134	14
A141496RT	14.00 x 14.00 x 96.00	356 x 356 x 2438	14
A1414116RT	14.00 x 14.00 x 116.00	356 x 356 x 2946	14