

Using the Punch & Go Tool

1. ITEMS NEEDED

Legrand Products:

- 363292-01 - Cat 5 Strip and Fit Tool
- AC3400 - Punch & Go Tool
- WP3475-WH - Cat 5 Quick Connect RJ45 Keystone Connector

TOOLS & ADDITIONAL SUPPLIES:

- Wire Cutter
- Continuity Tester
- Cat 5 Cable
- RJ45 Jumper Cable



2. INTRODUCTION

A structured wiring foundation is the most effective way to distribute information throughout a home. It supports high-performance technology through clutter-free cabling hidden behind the walls. To ensure more efficient installation, run a single home run to a central distribution point and bundle cables for access to multiple services.

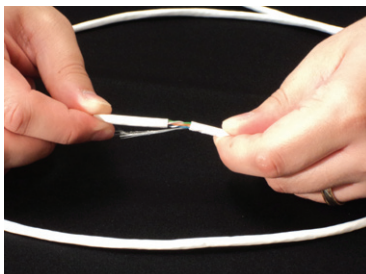
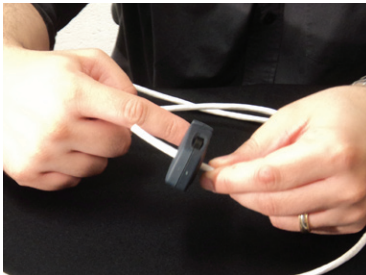
There are several fundamentals to remember when working with Cat 5:

- On-Q products utilize the T568A wiring standard
- Never splice Cat 5 cable
- Always maintain a 12-inch minimum separation between the Cat 5 and any 120 Volt AC cabling. If you must cross and electrical circuit, do so at a 90 degree angle
- Always maintain a minimum bend radius of 1 inch.
- Never exceed the 25 pound pull limit. Doing so may pull the twists out of the wire, which is what gives Cat 5 its immunity from interference. For the same reason, you shouldn't stand on the wire or use any retention devices that flatten out the wire.

3. HOW TO STEP-BY-STEP

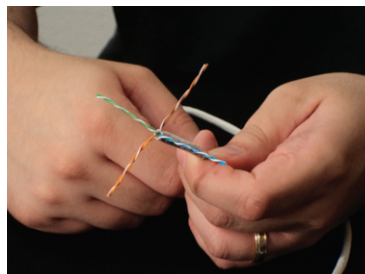
STEP 1

Use the Strip and Fit tool to cut off approximately two inches of the jacket.



STEP 2

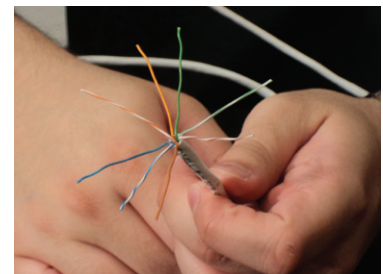
Cut the wire separator strands, separate the pairs and untwist them.



STEP 3

Now fan them out in the T568A pattern.

- White/Green
- Green
- White/Orange
- Blue
- White/Blue
- Orange
- White/Brown
- Brown

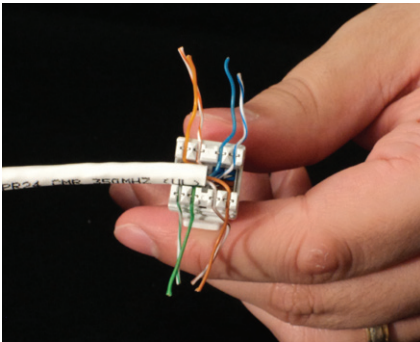
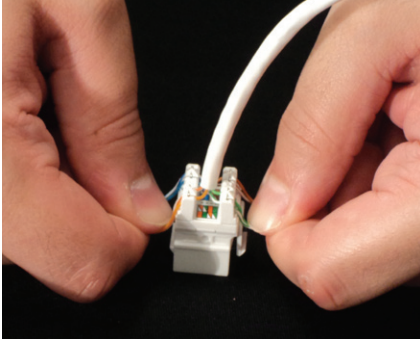


Using the Punch & Go Tool

3. HOW TO STEP-BY-STEP CONT.

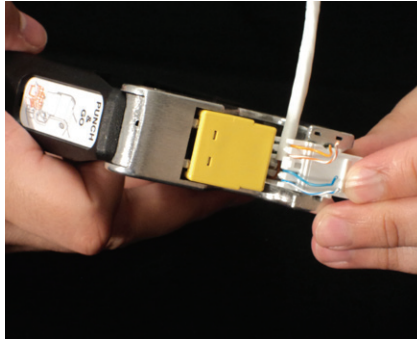
STEP 4

Place the fanned wires into the appropriate color coded terminals and press until fixed.



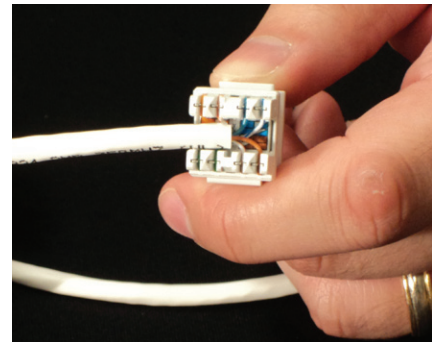
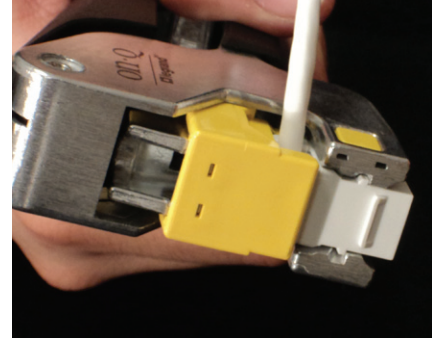
STEP 5

Insert the connector using the guide rails on either side of the Punch & Go tool and the connector.



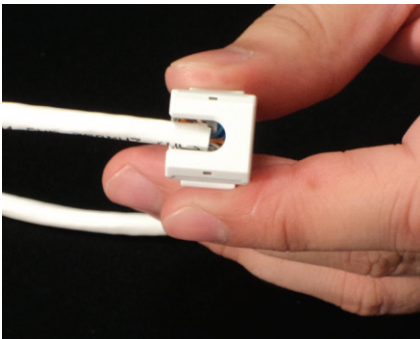
STEP 6

Firmly compress the handle of the Punch & Go tool to terminate and cut excess wire.



STEP 7

Place the cap on the back of the connector and press to make sure it is fully seated.



STEP 8

We recommend that you always test for continuity. After placing your completed connector into the wall, plug a short RJ45 jumper cable into the connector. Plug the other end of the jumper cable into the tester.



STEP 9

Place the other tester at the end of the connector cable (at the enclosure) and look for the green light.



Using the Punch & Go Tool

1. ITEMS NEEDED

Legrand Products:

- 363292-01 - Cat 5 Strip and Fit Tool
- AC3400 - Punch & Go Tool
- WP3475-WH - Cat 5 Quick Connect RJ45 Keystone Connector

TOOLS & ADDITIONAL SUPPLIES:

- Wire Cutter
- Continuity Tester
- Cat 5 Cable
- RJ45 Jumper Cable



2. INTRODUCTION

A structured wiring foundation is the most effective way to distribute information throughout a home. It supports high-performance technology through clutter-free cabling hidden behind the walls. To ensure more efficient installation, run a single home run to a central distribution point and bundle cables for access to multiple services.

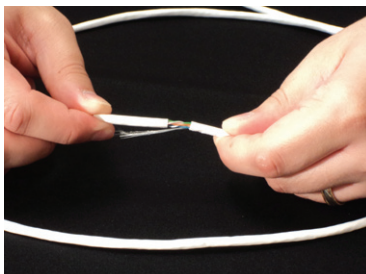
There are several fundamentals to remember when working with Cat 5:

- On-Q products utilize the T568A wiring standard
- Never splice Cat 5 cable
- Always maintain a 12-inch minimum separation between the Cat 5 and any 120 Volt AC cabling. If you must cross and electrical circuit, do so at a 90 degree angle
- Always maintain a minimum bend radius of 1 inch.
- Never exceed the 25 pound pull limit. Doing so may pull the twists out of the wire, which is what gives Cat 5 its immunity from interference. For the same reason, you shouldn't stand on the wire or use any retention devices that flatten out the wire.

3. HOW TO STEP-BY-STEP

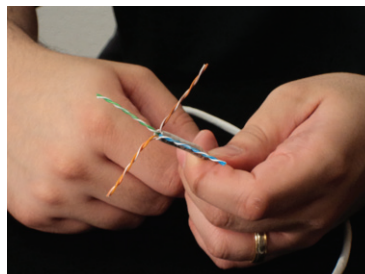
STEP 1

Use the Strip and Fit tool to cut off approximately two inches of the jacket.



STEP 2

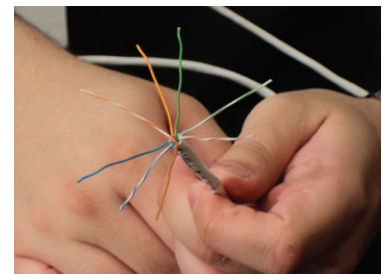
Cut the wire separator strands, separate the pairs and untwist them.



STEP 3

Now fan them out in the T568A pattern.

- White/Green
- Green
- White/Orange
- Blue
- White/Blue
- Orange
- White/Brown
- Brown

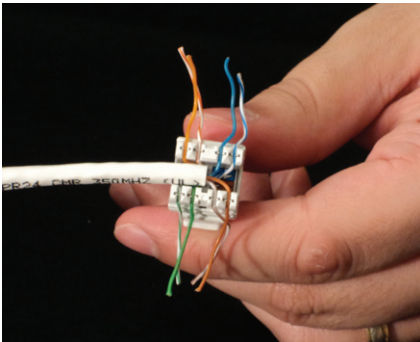
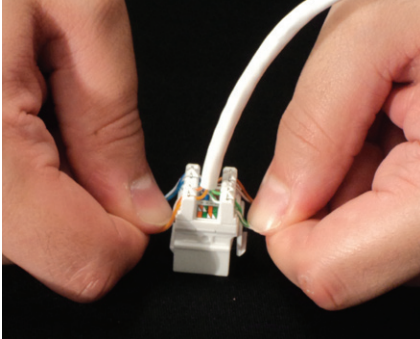


Using the Punch & Go Tool

3. HOW TO STEP-BY-STEP CONT.

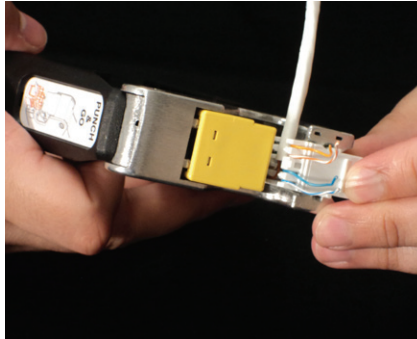
STEP 4

Place the fanned wires into the appropriate color coded terminals and press until fixed.



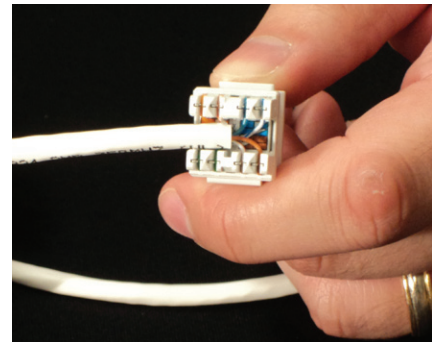
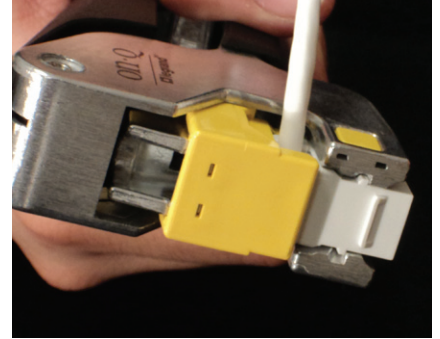
STEP 5

Insert the connector using the guide rails on either side of the Punch & Go tool and the connector.



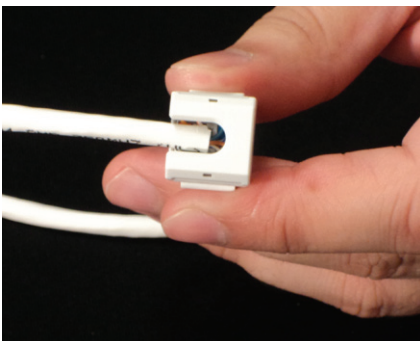
STEP 6

Firmly compress the handle of the Punch & Go tool to terminate and cut excess wire.



STEP 7

Place the cap on the back of the connector and press to make sure it is fully seated.



STEP 8

We recommend that you always test for continuity. After placing your completed connector into the wall, plug a short RJ45 jumper cable into the connector. Plug the other end of the jumper cable into the tester.



STEP 9

Place the other tester at the end of the connector cable (at the enclosure) and look for the green light.

