



ELLIOTT ELECTRIC SUPPLY

We Deliver...Lower Cost, Quality Products, & Personal Service

3804 South Street
75964-7263, TX Nacogdoches
Phone: 936-569-7941
Fax: 936-560-4685



ADR30 300 Al/Cu 1 Conduct. Lug

Thomas&Betts-Abb Ins Prod

Catalog Number	ADR30
Manufacturer	Thomas&Betts-Abb Ins Prod
Description	Mechanical Connector Lug, #6 Awg (Stranded) Conductor Size, 300 Kcmil Conductor Size, Non-Insulated, Aluminum/Copper Conductor Material, 1 Conductor, 2 In Overall Length, Screw Terminal, 0.09 LB/Ea
Weight per unit	0.0900 (lbs/each)
Product Category	Large Terminals & Connectors

Features

insulation	None IN
Material	ALUMINUM
Number of Mounting Holes	1 PH

Material, Color, and Finish

Finish	Tin-Plated
--------	------------

Descriptions

Description	300 AL/CU 1 CONDUCT. LUG
-------------	--------------------------

Manufacturer Information

Brand	Blackburn
GTIN	00783786610167
UPC	783786610167

Taxonomies, Classifications, and Categories

Category Description	SPLIT BOLTS
Type	Dual-Rated Mechanical Connector

Packaging

Carton	25
Package	250
Weight Per each	0.09

Uses, Certifications, and Standards

standard	UL E9809
----------	----------



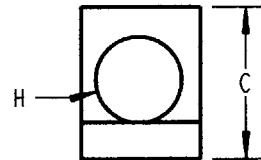
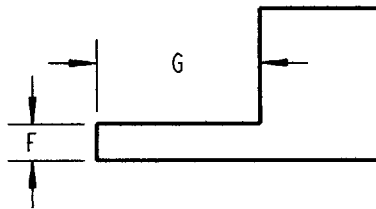
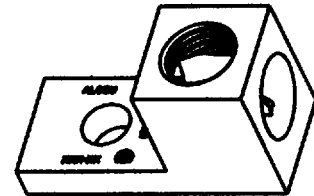
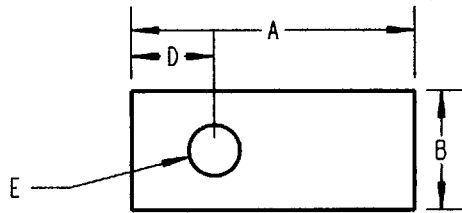
Blackburn



CATALOG NUMBER	WIRE RANGE (AL or CU)		DIMENSIONS								THREAD SIZE	SCREW	SCREW LENGTH
	MIN.	MAX.	"A"	"B"	"C"	"D"	"E" DIA.	"F"	"G"	"H" DIA.			
ADR6	14 AWG.	6 STR	1 3/64 1 1/16	1/2	31/64 1/2	15/64 1/4	17/64 17/64	5/64 6/64	43/64 44/64	7/32 1/4	1/4-25 UNF-2B 5/16-24 UNF-2B	SLOTTED .040 WIDE .057 WIDE	17/64 25/64
ADR2 ADR2L	14 AWG	2 STR	1 5/32	1/2	9/16	19/64	17/64	7/64	11/16	5/16	5/16-24 UNF-2	SLOTTED .050 WIDE	7/16 5/8
ADR11	14 AWG	1/0 STR	1 15/32	5/8	25/32	7/16	17/64	3/16	27/32	29/64	7/16-20 UNF-2	SLOTTED .072 WIDE	1/2
ADR21	14 AWG	2/0 STR	1 15/32	5/8	25/32	7/16	17/64	3/16	27/32	29/64	7/16-20 UNF-2	SLOTTED .072 WIDE	1/2
ADR25	6 STR	250 Kcmil	2	1	1 1/8	15/32	21/64	1/4	1	21/32	11/16-16 UN-2	5/16 HEX.	3/4
ADR30	6 STR	300 Kcmil	2	1	1 1/8	15/32	21/64	1/4	1	21/32	11/16-16 UN-2	5/16 HEX.	3/4
ADR35	6 STR	350 Kcmil	2 1/4	1 1/8	1 1/4	1/2	13/32	1/4	1 1/8	23/32	11/16-16 UN-2	5/16 HEX.	3/4
ADR50	4 STR	500 Kcmil	2 13/16	1 1/2	1 9/16	3/4	13/32	5/16	1 13/32	7/8	13/16-16 UN-2	3/8 HEX.	1 1/8
ADR60	2 STR	600 Kcmil	3 3/16	1 1/2	1 9/16	13/16	13/32	7/16	1 13/16	15/16	13/16-16 UN-2	3/8 HEX.	1 1/8
ADR80	300 Kcmil	800 Kcmil	3 3/8	1 3/4	1 15/16	7/8	21/32	1/2	1 3/4	1 1/16	15/16-16 UN-2	3/8 HEX.	1 1/8
ADR99	500 Kcmil	1000 Kcmil	3 3/8	1 3/4	1 15/16	7/8	21/32	1/2	1 3/4	1 1/4	15/16-16 UN-2	3/8 HEX.	1 1/8
ADR615	14 AWG.	6 STR	1 3/64	1/2	31/64	15/64	17/64	5/64	43/64	7/32	1/4 -28 UNF 2B	SLOTTED .040 WIDE	17/64

NOTES:

1. - ALL LUG BODIES ARE ALUMINUM WITH TIN PLATING.
2. - ADR6& ADR2 SCREWS ARE ALUMINUM WITH WAX DIP
3. - ADR11 THROUGH ADR99 SCREWS ARE TIN PLATED ALUMINUM WITH WAX DIP

**GENERAL NOTES**

1. ALL DIMENSIONS ARE FOR REFERENCE ONLY.
2. DIMENSIONS IN BRACKETS [] ARE IN METRIC UNITS.

REVISIONS

1 SEE ERN (2009287) FOR APPROVAL SIGNATURES & RELEASE DATE.
PROJECT NO: BM400690

Thomas & Betts
www.tnb.com

DESCRIPTION:

~ ADR ~ LUGS

ORIGINAL PROJECT NO / (ERN NO)

BM400690 / (2009287)

SHEET NO:

1 OF 1

REV. NO:

0

DRAWING NO:

WSD-000391