



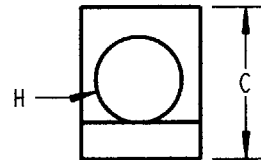
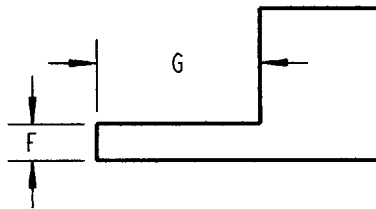
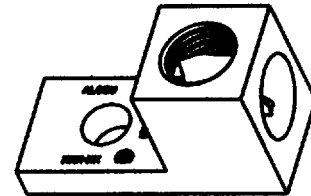
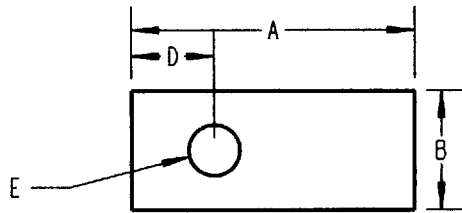
# Blackburn



CATALOG NUMBER	WIRE RANGE (AL or CU)		DIMENSIONS								THREAD SIZE	SCREW	SCREW LENGTH
	MIN.	MAX.	"A"	"B"	"C"	"D"	"E" DIA.	"F"	"G"	"H" DIA.			
ADR6	14 AWG.	6 STR	1 3/64 1 1/16	1/2	31/64 1/2	15/64 1/4	17/64 17/64	5/64 6/64	43/64 44/64	7/32 1/4	1/4-25 UNF-2B 5/16-24 UNF-2B	SLOTTED .040 WIDE .057 WIDE	17/64 25/64
ADR2 ADR2L	14 AWG	2 STR	1 5/32	1/2	9/16	19/64	17/64	7/64	11/16	5/16	5/16-24 UNF-2	SLOTTED .050 WIDE	7/16 5/8
ADR11	14 AWG	1/0 STR	1 15/32	5/8	25/32	7/16	17/64	3/16	27/32	29/64	7/16-20 UNF-2	SLOTTED .072 WIDE	1/2
ADR21	14 AWG	2/0 STR	1 15/32	5/8	25/32	7/16	17/64	3/16	27/32	29/64	7/16-20 UNF-2	SLOTTED .072 WIDE	1/2
ADR25	6 STR	250 Kcmil	2	1	1 1/8	15/32	21/64	1/4	1	21/32	11/16-16 UN-2	5/16 HEX.	3/4
ADR30	6 STR	300 Kcmil	2	1	1 1/8	15/32	21/64	1/4	1	21/32	11/16-16 UN-2	5/16 HEX.	3/4
ADR35	6 STR	350 Kcmil	2 1/4	1 1/8	1 1/4	1/2	13/32	1/4	1 1/8	23/32	11/16-16 UN-2	5/16 HEX.	3/4
ADR50	4 STR	500 Kcmil	2 13/16	1 1/2	1 9/16	3/4	13/32	5/16	1 13/32	7/8	13/16-16 UN-2	3/8 HEX.	1 1/8
ADR60	2 STR	600 Kcmil	3 3/16	1 1/2	1 9/16	13/16	13/32	7/16	1 13/16	15/16	13/16-16 UN-2	3/8 HEX.	1 1/8
ADR80	300 Kcmil	800 Kcmil	3 3/8	1 3/4	1 15/16	7/8	21/32	1/2	1 3/4	1 1/16	15/16-16 UN-2	3/8 HEX.	1 1/8
ADR99	500 Kcmil	1000 Kcmil	3 3/8	1 3/4	1 15/16	7/8	21/32	1/2	1 3/4	1 1/4	15/16-16 UN-2	3/8 HEX.	1 1/8
ADR615	14 AWG.	6 STR	1 3/64	1/2	31/64	15/64	17/64	5/64	43/64	7/32	1/4 -28 UNF 2B	SLOTTED .040 WIDE	17/64

**NOTES:**

1. - ALL LUG BODIES ARE ALUMINUM WITH TIN PLATING.
2. - ADR6& ADR2 SCREWS ARE ALUMINUM WITH WAX DIP
3. - ADR11 THROUGH ADR99 SCREWS ARE TIN PLATED ALUMINUM WITH WAX DIP



**GENERAL NOTES**

1. ALL DIMENSIONS ARE FOR REFERENCE ONLY.
2. DIMENSIONS IN BRACKETS [ ] ARE IN METRIC UNITS.

**REVISIONS**

1 SEE ERN ( 2009287 ) FOR APPROVAL SIGNATURES & RELEASE DATE.  
PROJECT NO: BM400690

**Thomas & Betts**  
www.tnb.com

DESCRIPTION:

~ ADR ~ LUGS

ORIGINAL PROJECT NO / ( ERN NO )

BM400690 / ( 2009287 )

SHEET NO:

1 OF 1

REV. NO:

0

DRAWING NO:

WSD-000391



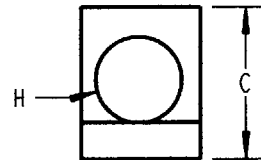
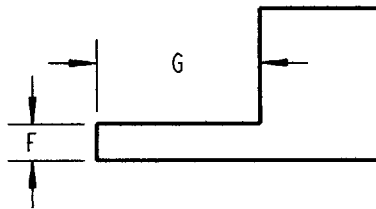
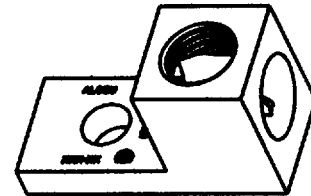
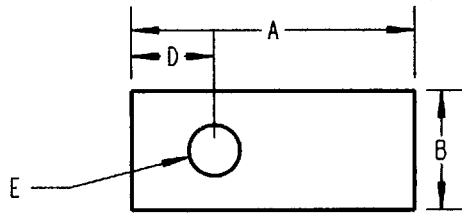
# Blackburn



CATALOG NUMBER	WIRE RANGE (AL or CU)		DIMENSIONS								THREAD SIZE	SCREW	SCREW LENGTH
	MIN.	MAX.	"A"	"B"	"C"	"D"	"E" DIA.	"F"	"G"	"H" DIA.			
ADR6	14 AWG.	6 STR	1 3/64 1 1/16	1/2	31/64 1/2	15/64 1/4	17/64 17/64	5/64 6/64	43/64 44/64	7/32 1/4	1/4-25 UNF-2B 5/16-24 UNF-2B	SLOTTED .040 WIDE .057 WIDE	17/64 25/64
ADR2 ADR2L	14 AWG	2 STR	1 5/32	1/2	9/16	19/64	17/64	7/64	11/16	5/16	5/16-24 UNF-2	SLOTTED .050 WIDE	7/16 5/8
ADR11	14 AWG	1/0 STR	1 15/32	5/8	25/32	7/16	17/64	3/16	27/32	29/64	7/16-20 UNF-2	SLOTTED .072 WIDE	1/2
ADR21	14 AWG	2/0 STR	1 15/32	5/8	25/32	7/16	17/64	3/16	27/32	29/64	7/16-20 UNF-2	SLOTTED .072 WIDE	1/2
ADR25	6 STR	250 Kcmil	2	1	1 1/8	15/32	21/64	1/4	1	21/32	11/16-16 UN-2	5/16 HEX.	3/4
ADR30	6 STR	300 Kcmil	2	1	1 1/8	15/32	21/64	1/4	1	21/32	11/16-16 UN-2	5/16 HEX.	3/4
ADR35	6 STR	350 Kcmil	2 1/4	1 1/8	1 1/4	1/2	13/32	1/4	1 1/8	23/32	11/16-16 UN-2	5/16 HEX.	3/4
ADR50	4 STR	500 Kcmil	2 13/16	1 1/2	1 9/16	3/4	13/32	5/16	1 13/32	7/8	13/16-16 UN-2	3/8 HEX.	1 1/8
ADR60	2 STR	600 Kcmil	3 3/16	1 1/2	1 9/16	13/16	13/32	7/16	1 13/16	15/16	13/16-16 UN-2	3/8 HEX.	1 1/8
ADR80	300 Kcmil	800 Kcmil	3 3/8	1 3/4	1 15/16	7/8	21/32	1/2	1 3/4	1 1/16	15/16-16 UN-2	3/8 HEX.	1 1/8
ADR99	500 Kcmil	1000 Kcmil	3 3/8	1 3/4	1 15/16	7/8	21/32	1/2	1 3/4	1 1/4	15/16-16 UN-2	3/8 HEX.	1 1/8
ADR615	14 AWG.	6 STR	1 3/64	1/2	31/64	15/64	17/64	5/64	43/64	7/32	1/4 -28 UNF 2B	SLOTTED .040 WIDE	17/64

**NOTES:**

1. - ALL LUG BODIES ARE ALUMINUM WITH TIN PLATING.
2. - ADR6& ADR2 SCREWS ARE ALUMINUM WITH WAX DIP
3. - ADR11 THROUGH ADR99 SCREWS ARE TIN PLATED ALUMINUM WITH WAX DIP



**GENERAL NOTES**

1. ALL DIMENSIONS ARE FOR REFERENCE ONLY.
2. DIMENSIONS IN BRACKETS [ ] ARE IN METRIC UNITS.

**REVISIONS**

1 SEE ERN ( 2009287 ) FOR APPROVAL SIGNATURES & RELEASE DATE.  
PROJECT NO: BM400690

**Thomas & Betts**  
www.tnb.com

DESCRIPTION:

~ ADR ~ LUGS

ORIGINAL PROJECT NO / ( ERN NO )  
BM400690 / ( 2009287 )

SHEET NO:  
1 OF 1

REV. NO:  
0

DRAWING NO:  
WSD-000391