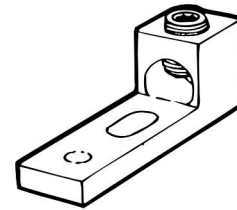
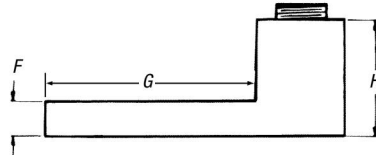
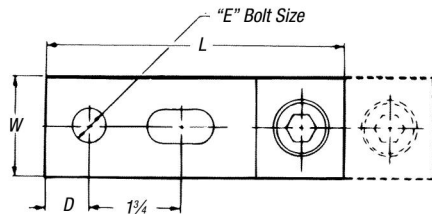


Dual-Rated Mechanical Connectors

Type ADR — ALCÜL™ Single-Conductor, Switchgear Mount*

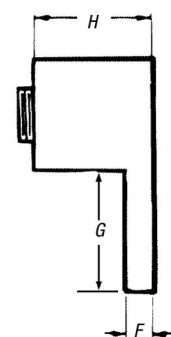
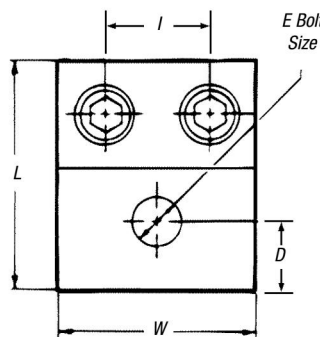


CAT. NO.	CONDUCTOR RANGE (AL OR CU)		DIMENSIONS (IN.)						
	MAX.	MIN.	L	W	H	D	E	F	G
ADR25-12S	250 kcmil	3/0 Str.	3	1	1 ¹ / ₁₆	1/2	3/8	1/4	2
ADR35-12S	350 kcmil	4 Str.	4 ¹ / ₁₆	1 ¹ / ₄	1 ¹ / ₁₆	23/32	1/2	7/16	3 ³ / ₁₆
ADR50-12S	500 kcmil	400 kcmil	4 ¹ / ₁₆	1 ¹ / ₄	1 ¹ / ₁₆	23/32	1/2	7/16	3 ³ / ₁₆
ADR80-12DS	800 kcmil	300 kcmil	6 ³ / ₁₆	1 ⁵ / ₈	1 ⁷ / ₈	23/32	1/2	9/16	3 ³ / ₁₆
ADR99-12DS	1,000 kcmil	350 kcmil	6 ³ / ₁₆	1 ⁵ / ₈	1 ⁷ / ₈	23/32	1/2	9/16	3 ³ / ₁₆

* NEMA Spacing: 1¹/₄" centers except ADR25-12S: 1" centers.

Connectors accommodating conductors 600 kcmil and larger have double row of set screws (D suffix).

Type ADR — ALCÜL™ Two-Conductor, One-Hole Mount



CAT. NO.	CONDUCTOR RANGE (AL OR CU)		DIMENSIONS (IN.)							
	MAX.	MIN.	L	W	H	D	E	F	G	I
ADR11-21	1/0 Str.	#14	1 ¹⁵ / ₃₂	1 ¹ / ₃₂	2 ⁵ / ₃₂	7/16	1/4	3/16	2 ⁷ / ₃₂	3 ⁵ / ₆₄
ADR21-21*	2/0 Str.	#14	1 ¹⁵ / ₃₂	1/4	2 ⁵ / ₃₂	2 ⁷ / ₆₄	1/4	3/16	2 ⁷ / ₃₂	2 ¹ / ₃₂
ADR25-21	250	#6 Str.	2 ⁹ / ₁₆	1 ⁴ / ₆₄	1 ³ / ₁₆	7/8	3/8	1/4	1 ⁹ / ₁₆	1 ⁹ / ₁₆
ADR35-21	350	#6 Str.	2 ⁷ / ₈	1 ⁹ / ₆₄	1 ¹ / ₄	7/8	1/2	1/4	1 ³ / ₄	6 ¹ / ₆₄
ADR60-21	600	#2 Str.	3 ³ / ₁₆	2 ¹³ / ₃₂	1 ¹ / ₁₆	5/8	1/2	7/16	1 ¹³ / ₁₆	1 ¹ / ₃₂
ADR80-21	800	300	3 ³ / ₈	3 ³ / ₁₆	1 ¹⁵ / ₁₆	7/8	5/8	1/2	1 ³ / ₄	1 ⁵ / ₈
ADR99-21	1000	500	3 ³ / ₈	3 ³ / ₁₆	1 ¹⁵ / ₁₆	7/8	5/8	1/2	1 ³ / ₄	1 ⁵ / ₈

* Not CSA Certified.

UL 486B

AL9CU