



ELLIOTT ELECTRIC SUPPLY

We Deliver...Lower Cost, Quality Products, & Personal Service

3804 South Street
75964-7263, TX Nacogdoches
Phone: 936-569-7941
Fax: 936-560-4685



ADR80 800 Al/Cu 1 Conduct. Lug

Thomas&Betts-Abb Ins Prod

| | |
|------------------|------------------------------|
| Catalog Number | ADR80 |
| Manufacturer | Thomas&Betts-Abb Ins Prod |
| Description | |
| Weight per unit | 0.5450 (lbs/each) |
| Product Category | Large Terminals & Connectors |

Features

| | |
|--------------------------|----------|
| insulation | None IN |
| Material | ALUMINUM |
| Number of Conductors | 1 PH |
| Number of Mounting Holes | 1 PH |

Material, Color, and Finish

| | |
|--------|------------|
| Finish | Tin-Plated |
|--------|------------|

Descriptions

| | |
|------------------|--|
| Description | 800 AL/CU 1 CONDUCT. LUG |
| Product Type | Conn Mecanique Al Et Cu |
| Special Features | Easy Installation - no special tools required. |

Manufacturer Information

| | |
|---------------------------|----------------|
| Brand | Blackburn |
| GTIN | 00783786610389 |
| Manufacturers Part Number | ADR80 |
| UPC | 783786610389 |

Taxonomies, Classifications, and Categories

| | |
|----------------------|-----------------------------------|
| Category Description | Comp & Mech Lugs and Butt Splices |
| Type | Dual-Rated Mechanical Connector |

Packaging

| | |
|-----------------|-------|
| Carton | 4 |
| Package | 40 |
| Weight Per each | 0.545 |

Uses, Certifications, and Standards

| | |
|----------|----------|
| standard | UL E9809 |
|----------|----------|



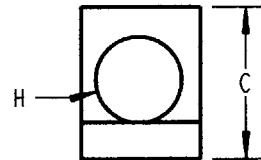
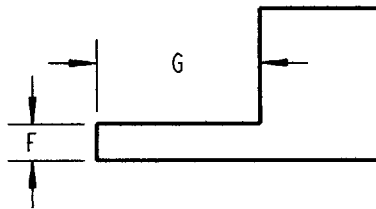
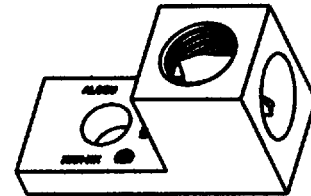
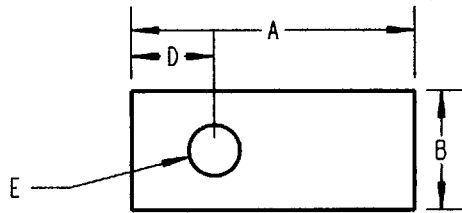
Blackburn



| CATALOG NUMBER | WIRE RANGE (AL or CU) | | DIMENSIONS | | | | | | | | THREAD SIZE | SCREW | SCREW LENGTH |
|----------------|-----------------------|------------|------------------|-------|--------------|--------------|----------------|--------------|----------------|-------------|---------------------------------|-----------------------------------|----------------|
| | MIN. | MAX. | "A" | "B" | "C" | "D" | "E" DIA. | "F" | "G" | "H" DIA. | | | |
| ADR6 | 14 AWG. | 6 STR | 1 3/64 1 1/16 | 1/2 | 31/64 1/2 | 15/64 1/4 | 17/64 17/64 | 5/64 6/64 | 43/64 44/64 | 7/32 1/4 | 1/4-25 UNF-2B 5/16-24 UNF-2B | SLOTTED .040 WIDE .057 WIDE | 17/64 25/64 |
| ADR2 ADR2L | 14 AWG | 2 STR | 1 5/32 | 1/2 | 9/16 | 19/64 | 17/64 | 7/64 | 11/16 | 5/16 | 5/16-24 UNF-2 | SLOTTED .050 WIDE | 7/16 5/8 |
| ADR11 | 14 AWG | 1/0 STR | 1 15/32 | 5/8 | 25/32 | 7/16 | 17/64 | 3/16 | 27/32 | 29/64 | 7/16-20 UNF-2 | SLOTTED .072 WIDE | 1/2 |
| ADR21 | 14 AWG | 2/0 STR | 1 15/32 | 5/8 | 25/32 | 7/16 | 17/64 | 3/16 | 27/32 | 29/64 | 7/16-20 UNF-2 | SLOTTED .072 WIDE | 1/2 |
| ADR25 | 6 STR | 250 Kcmil | 2 | 1 | 1 1/8 | 15/32 | 21/64 | 1/4 | 1 | 21/32 | 11/16-16 UN-2 | 5/16 HEX. | 3/4 |
| ADR30 | 6 STR | 300 Kcmil | 2 | 1 | 1 1/8 | 15/32 | 21/64 | 1/4 | 1 | 21/32 | 11/16-16 UN-2 | 5/16 HEX. | 3/4 |
| ADR35 | 6 STR | 350 Kcmil | 2 1/4 | 1 1/8 | 1 1/4 | 1/2 | 13/32 | 1/4 | 1 1/8 | 23/32 | 11/16-16 UN-2 | 5/16 HEX. | 3/4 |
| ADR50 | 4 STR | 500 Kcmil | 2 13/16 | 1 1/2 | 1 9/16 | 3/4 | 13/32 | 5/16 | 1 13/32 | 7/8 | 13/16-16 UN-2 | 3/8 HEX. | 1 1/8 |
| ADR60 | 2 STR | 600 Kcmil | 3 3/16 | 1 1/2 | 1 9/16 | 13/16 | 13/32 | 7/16 | 1 13/16 | 15/16 | 13/16-16 UN-2 | 3/8 HEX. | 1 1/8 |
| ADR80 | 300 Kcmil | 800 Kcmil | 3 3/8 | 1 3/4 | 1 15/16 | 7/8 | 21/32 | 1/2 | 1 3/4 | 1 1/16 | 15/16-16 UN-2 | 3/8 HEX. | 1 1/8 |
| ADR99 | 500 Kcmil | 1000 Kcmil | 3 3/8 | 1 3/4 | 1 15/16 | 7/8 | 21/32 | 1/2 | 1 3/4 | 1 1/4 | 15/16-16 UN-2 | 3/8 HEX. | 1 1/8 |
| ADR615 | 14 AWG. | 6 STR | 1 3/64 | 1/2 | 31/64 | 15/64 | 17/64 | 5/64 | 43/64 | 7/32 | 1/4 -28 UNF 2B | SLOTTED .040 WIDE | 17/64 |

NOTES:

1. - ALL LUG BODIES ARE ALUMINUM WITH TIN PLATING.
2. - ADR6& ADR2 SCREWS ARE ALUMINUM WITH WAX DIP
3. - ADR11 THROUGH ADR99 SCREWS ARE TIN PLATED ALUMINUM WITH WAX DIP

**GENERAL NOTES**

1. ALL DIMENSIONS ARE FOR REFERENCE ONLY.
2. DIMENSIONS IN BRACKETS [] ARE IN METRIC UNITS.

REVISIONS

1 SEE ERN (2009287) FOR APPROVAL SIGNATURES & RELEASE DATE.
PROJECT NO: BM400690

Thomas & Betts
www.tnb.com

DESCRIPTION:

~ ADR ~ LUGS

ORIGINAL PROJECT NO / (ERN NO)

BM400690 / (2009287)

SHEET NO:

1 OF 1

REV. NO:

0

DRAWING NO:

WSD-000391