



Catalog Number: A-HS075
Item Description: HOLE SEALS
UPC Code: 784572187849

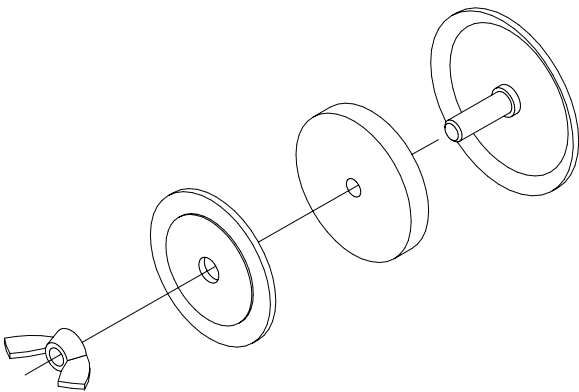
Brand Name: Milbank
Type: Hole Seal
Application: Enclosure Accessory
Material: Steel
Color: ANSI 61 Gray
Insulation: None
Consist Of: Hole Seal and Rubber Gasket
Knockouts: False



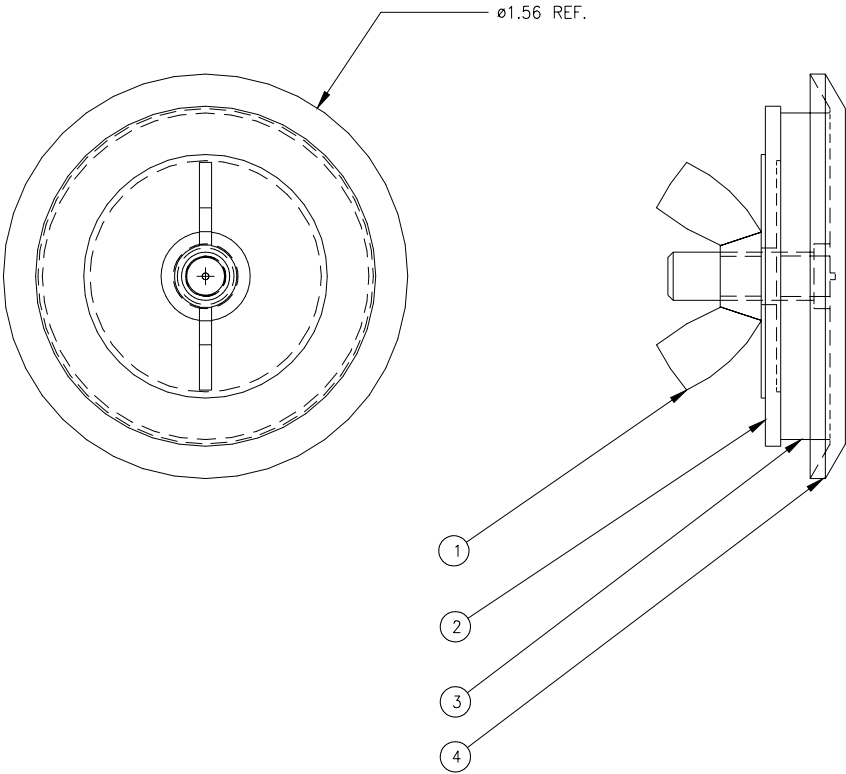
Utility requirements may vary. Always consult the serving utility for their requirements prior to ordering or installing this equipment. This product must always be installed by a licensed electrician. Installation of this equipment may require local electrical inspector approval.

CATALOG NO.	MATERIAL
A-HS075	16 GA CRS
A-HS075XS	16 GA STAINLESS

BILL OF MATERIAL		
NO.	QTY.	DESCRIPTION
1	1	10-32 WING NUT
2	1	GALVANIZED BACK PLATE
3	1	GASKET
4	1	CAP W/ 10-32 WELD STUD



ISOMETRIC VIEW



NOTE:
HOLE SEAL USED FOR
3/4" INCH CONDUIT.
(1.06 MAX. HOLE DIA)

B	5/19/98	REDRAWN TO 3D GEOMETRY:	DW
REV.	DATE	DESCRIPTION	BY
		MATERIAL	16 GA CRS/ 16 GA STAINLESS
		FINISH	
		CATALOG NUMBER	SEE CHART
		TITLE	3/4" HOLE SEAL
		CUSTOMER	MILBANK STANDARD
		DRAWING NUMBER	705772-11
		SCALE:	NTS
		DATE:	5/12/98
			MILBANK MFG. CO. GENERAL OFFICES KANSAS CITY, MO.

TOLERANCES:		
UNLESS NOTED OTHERWISE		
X.X	± .1	
X.XX	± .03	
X.XXX	± .015	
X"	± 2"	

THIRD ANGLE	
PROJECTION	

DRAWN:	DW
CHKD:	
APPR:	



Catalog Number: A-HS075
Item Description: HOLE SEALS
UPC Code: 784572187849

Brand Name: Milbank
Type: Hole Seal
Application: Enclosure Accessory
Material: Steel
Color: ANSI 61 Gray
Insulation: None
Consist Of: Hole Seal and Rubber Gasket
Knockouts: False

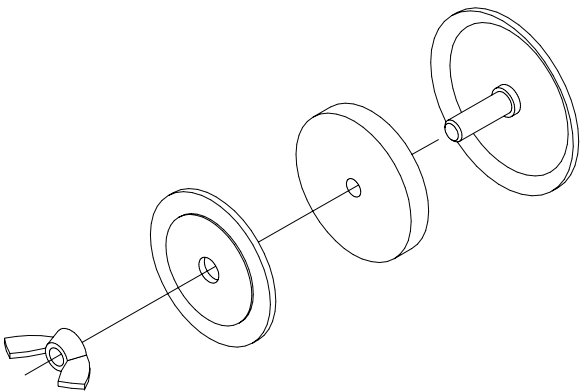


Utility requirements may vary. Always consult the serving utility for their requirements prior to ordering or installing this equipment. This product must always be installed by a licensed electrician. Installation of this equipment may require local electrical inspector approval.

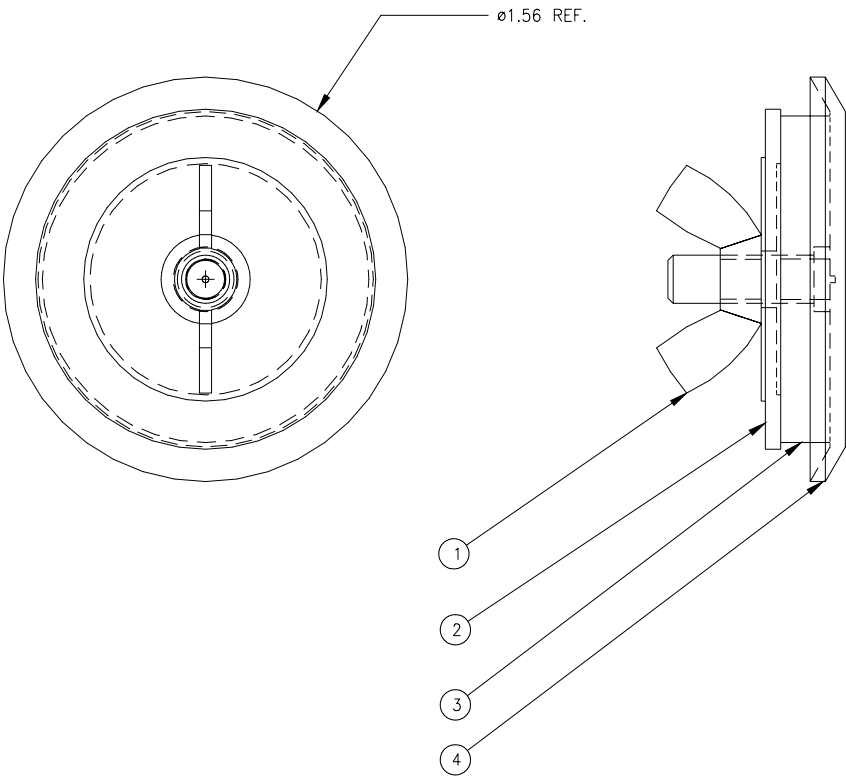
CATALOG NO.	MATERIAL
A-HS075	16 GA CRS
A-HS075XS	16 GA STAINLESS

705772-11

BILL OF MATERIAL		
NO.	QTY.	DESCRIPTION
1	1	10-32 WING NUT
2	1	GALVANIZED BACK PLATE
3	1	GASKET
4	1	CAP W/ 10-32 WELD STUD



ISOMETRIC VIEW



NOTE:
HOLE SEAL USED FOR
3/4" INCH CONDUIT.
(1.06 MAX. HOLE DIA)

B	5/19/98	REDRAWN TO 3D GEOMETRY:	DW
REV.	DATE	DESCRIPTION	BY
		MATERIAL	16 GA CRS/ 16 GA STAINLESS
		FINISH	
		CATALOG NUMBER	SEE CHART
		TITLE	3/4" HOLE SEAL
		CUSTOMER	MILBANK STANDARD
		DRAWING NUMBER	705772-11
		SCALE:	NTS
		DATE:	5/12/98
			MILBANK MFG. CO. GENERAL OFFICES KANSAS CITY, MO.

TOLERANCES:		
UNLESS NOTED OTHERWISE		
X.X	± .1	
X.XX	± .03	
X.XXX	± .015	
X"	± 2"	

THIRD ANGLE	
PROJECTION	

DRAWN:	DW
CHKD:	
APPR:	