



Catalog Number: A-HS200  
Item Description: HOLE SEALS  
UPC Code: 784572187870

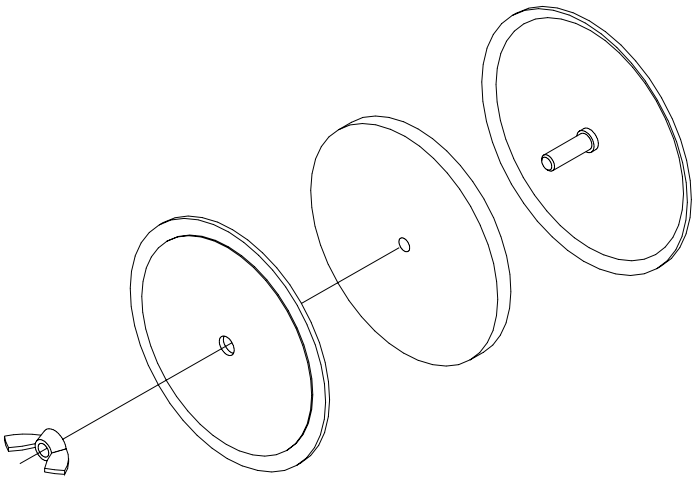
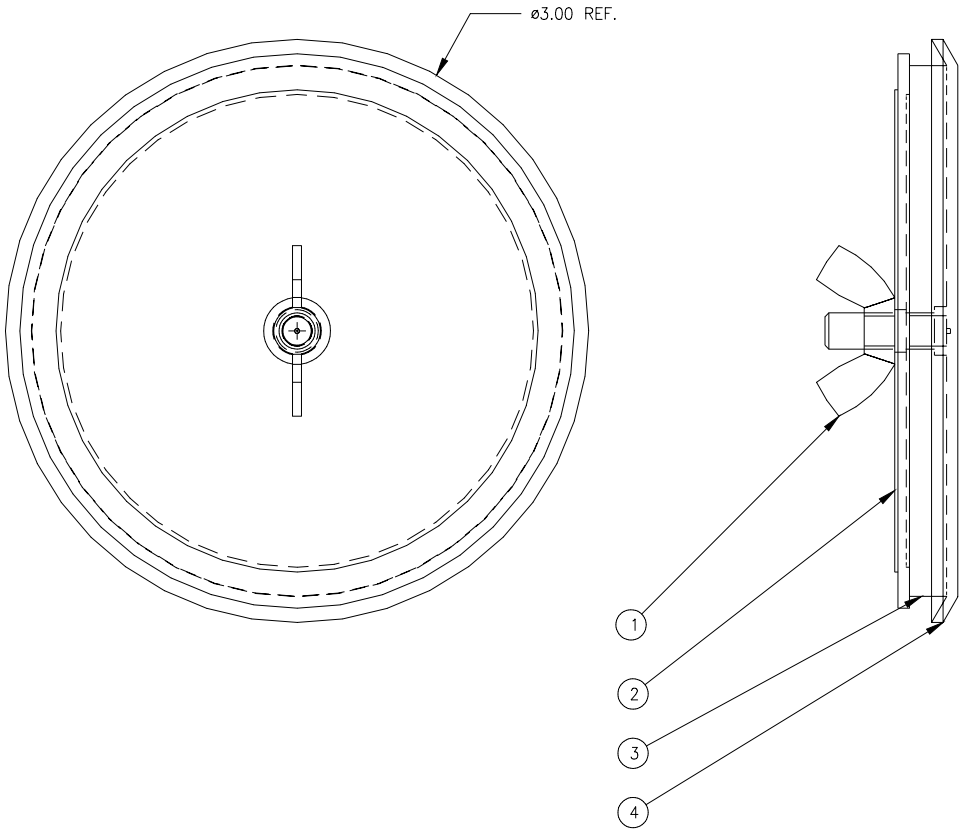
Brand Name: Milbank  
Type: Hole Seal  
Application: Enclosure Accessory  
Material: Steel  
Color: ANSI 61 Gray  
Insulation: None  
Consist Of: Hole Seal and Rubber Gasket  
Knockouts: False



*Utility requirements may vary. Always consult the serving utility for their requirements prior to ordering or installing this equipment. This product must always be installed by a licensed electrician. Installation of this equipment may require local electrical inspector approval.*

CATALOG NO.	MATERIAL
A-HS200	16 GA CRS
A-HS200XS	16 GA STAINLESS

BILL OF MATERIAL		
NO.	QTY.	DESCRIPTION
1	1	10-32 WING NUT
2	1	GALVANIZED BACK PLATE
3	1	GASKET
4	1	CAP W/ 10-32 WELD STUD



ISOMETRIC VIEW

NOTE:  
HOLE SEAL USED FOR  
2 INCH CONDUIT.  
(2.50 MAX. HOLE DIA)

B	5/18/98	REDRAWN TO 3D GEOMETRY:	DW
REV.	DATE	DESCRIPTION	BY
		MATERIAL	16 GA CRS/ 16 GA STAINLESS
		FINISH	
		CATALOG NUMBER	SEE CHART
		TITLE	2" HOLE SEAL
		CUSTOMER	MILBANK STANDARD
		DRAWING NUMBER	705775-11
		SCALE:	NTS
		DATE:	5/13/98
			MILBANK MFG. CO. GENERAL OFFICES KANSAS CITY, MO.

TOLERANCES:	
UNLESS NOTED OTHERWISE	
X.X	± .1
X.XX	± .03
X.XXX	± .015
X"	± 2"

THIRD ANGLE	
PROJECTION	

DRAWN:	DW
CHKD:	
APPR:	



Catalog Number: A-HS200  
Item Description: HOLE SEALS  
UPC Code: 784572187870

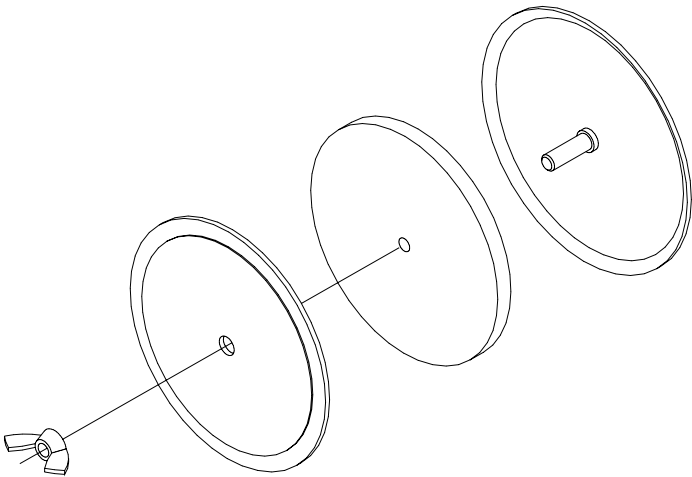
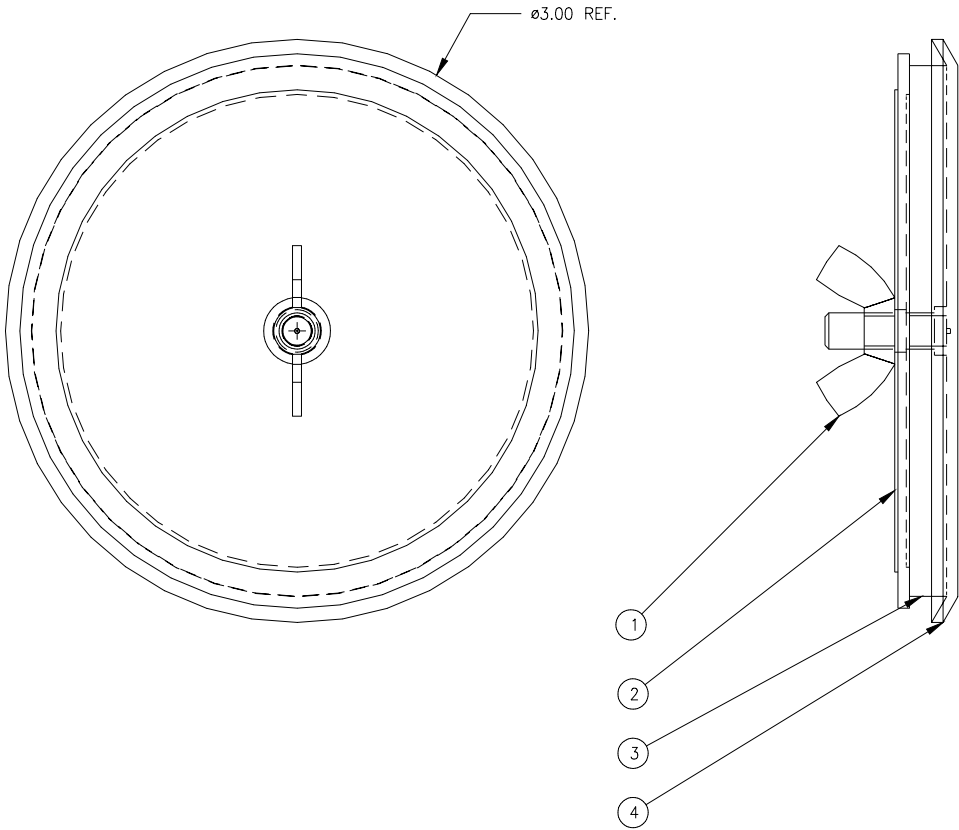
Brand Name: Milbank  
Type: Hole Seal  
Application: Enclosure Accessory  
Material: Steel  
Color: ANSI 61 Gray  
Insulation: None  
Consist Of: Hole Seal and Rubber Gasket  
Knockouts: False



*Utility requirements may vary. Always consult the serving utility for their requirements prior to ordering or installing this equipment. This product must always be installed by a licensed electrician. Installation of this equipment may require local electrical inspector approval.*

CATALOG NO.	MATERIAL
A-HS200	16 GA CRS
A-HS200XS	16 GA STAINLESS

BILL OF MATERIAL		
NO.	QTY.	DESCRIPTION
1	1	10-32 WING NUT
2	1	GALVANIZED BACK PLATE
3	1	GASKET
4	1	CAP W/ 10-32 WELD STUD



ISOMETRIC VIEW

NOTE:  
HOLE SEAL USED FOR  
2 INCH CONDUIT.  
(2.50 MAX. HOLE DIA)

B	5/18/98	REDRAWN TO 3D GEOMETRY:	DW
REV.	DATE	DESCRIPTION	BY
		MATERIAL	16 GA CRS/ 16 GA STAINLESS
		FINISH	
		CATALOG NUMBER	SEE CHART
		TITLE	2" HOLE SEAL
		CUSTOMER	MILBANK STANDARD
		DRAWING NUMBER	705775-11
		SCALE:	NTS
		DATE:	5/13/98
			MILBANK MFG. CO. GENERAL OFFICES KANSAS CITY, MO.

TOLERANCES:	
UNLESS NOTED OTHERWISE	
X.X	± .1
X.XX	± .03
X.XXX	± .015
X"	± 2"

THIRD ANGLE	
PROJECTION	

DRAWN:	DW
CHKD:	
APPR:	