



ELLIOTT ELECTRIC SUPPLY

We Deliver...Lower Cost, Quality Products, & Personal Service

3804 South Street
75964-7263, TX Nacogdoches
Phone: 936-569-7941
Fax: 936-560-4685



ALR1M4 (1)-500 to (4)-4/0 Power Dist Block

Nsi Industries

Catalog Number	ALR1M4
Manufacturer	Nsi Industries
Description	Power Distribution Block, 1 Primary Openings, 4 Secondary Openings, #4 Awg to 500 MCM Primary Opening Wire Size, #6 to #4/0 Awg Secondary Opening Wire Size, 380 A, 600 V, Clear Acrylic, Maximum Of +90 °C, 5.5 In Overall Length, 2.9 In Overall Width, 3.25 In Overall Height, 1.4 LB
Weight per unit	1.4 (lbs/each)
Product Category	Power BLKS & Distribution BLKS

Features

amperage rating	380 VAC
Number of Terminals	5 in
Voltage Rating	600 VAC
Wire Size	(1) 500 MCM-4 AWG(Line) - (4) 4/0-6 AWG(Load)

Material, Color, and Finish

Color	BLACK
-------	-------

Dimensions and Weight

Size	L=5.50 - H=3.25 - W=2.90 IN
------	-----------------------------

Descriptions

Description	(1)-500 TO (4)-4/0 POWER DIST BLOCK
Special Features	(1) 500 MCM-4 AWG (Line Side) - (4) 4/0-6 AWG (Load Side) - 380 Amps Per Pole

Manufacturer Information

GTIN	00662381165480
sub brand	Connector Blocks
UPC	662381165480

Taxonomies, Classifications, and Categories

Category Description	TERMINAL BLOCKS POWER DIST BLOCKS
Type	Single Primary

Packaging

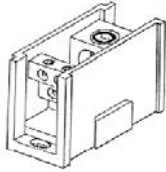
Carton	3
Weight Per each	1.4

Uses, Certifications, and Standards

Application	Terminate, Splice, Tap Power Connectors
Mounting standard	2 Mounting Holes Recognized to UL1059

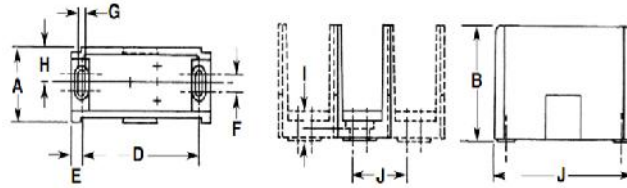


Connector Bloks™



Drawn - SD
Approved - KM

Title - Connector Bloks™



Dual Rated Connector Bloks

Insulator Cat. No	A	B	C	D	E	F	G	H	I	J	
S	1.04	2.34	2.90	2.25	0.18	0.35	0.20	0.46	0.19	0.63	1.25
M	1.71	2.62	4.00	3.50	0.25	0.37	0.20	0.79	0.20	1.25	1.87
L	2.90	3.25	5.50	5.00	0.25	0.50	0.27	1.38	0.29	2.25	3.25

Part Number	Temp Rating	Line Side	Load Side	Amps Per Pole	Insulator Block			Insulator Block Size
					L	W	H	
AS-K1-H4	90 C	 2/0-14 AWG	 4-14 AWG	175	2.90	1.04	2.34	S
AS-K1-H6	90 C	 2/0-14 AWG	 4-14 AWG	175	2.90	1.04	2.34	S
AM-P1-H6	90 C	 350MCM-6AWG	 4-14 AWG	310	4.00	1.71	2.62	M
AM-P1-H12	90 C	 350MCM-6AWG	 4-14 AWG	310	4.00	1.71	2.62	M
AM-R1-H12	90 C	 500MCM-4AWG	 4-14 AWG	380	4.00	1.71	2.62	M
AL-R1-M4	90 C	 500MCM-4AWG	 4/0-6 AWG	380	5.50	2.90	3.25	L
AL-P1-K6	90 C	 350MCM-6AWG	 2/0-14 AWG	310	5.50	2.90	3.25	L
AL-R1-K6	90 C	 500MCM-4AWG	 2/0-14 AWG	380	5.50	2.90	3.25	L
AL-V1-K6	90 C	 1000-250 MCM	 2/0-14 AWG	545	5.50	2.90	3.25	L