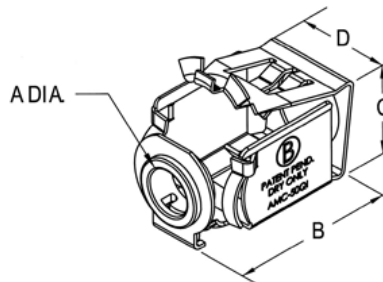
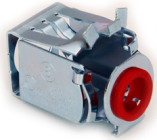


EZ Lock - Connector - Steel

Images



Application

Bridgeport's EZ Lock AMC-50QI is used to connect 14/2 - 10/3 (.43" - .61") AC/MC/MCI-A/HCF cable and 3/8" FMC to box or enclosure. No Tools Required Just squeeze to insert into the 1/2" K.O Use with an anti-shirt bushing. .375" Throat Opening. Great for lighting whips! Patent Pending

Product Information

[Download Photo Image](#) [Download Dimensional Image](#)
Dimension A in Inches: .375
Dimension B in Inches: 1.53
Dimension C in Inches: .875
Dimension D in Inches: .81

Material: Steel
Finish: Zinc Plated

Certifications & Codes:

Federal Specification Number: A-A-50553
NEMA Standard: FB-1
UL File Number: cETLus Listed
UL Standard: UL-514B
UNSPSC: 39121419

Catalog ID: AMC-50QI

UPC Number: 78174721570

Description: Connector, E-Z Lock, Steel, .375 Inch Throat Opening, No Tools Required! Quick Install!

Application: Bridgeport's EZ Lock AMC-50QI is used to connect 14/2 - 10/3 (.43" - .61") AC/MC/MCI-A/HCF cable and 3/8" FMC to box or enclosure. No Tools Required Just squeeze to insert into the 1/2" K.O Use with an anti-shirt bushing. .375" Throat Opening. Great for lighting whips! Patent Pending

Trade Size: 3/8"

Std Pkg Qty: 500

Unit Qty: 50