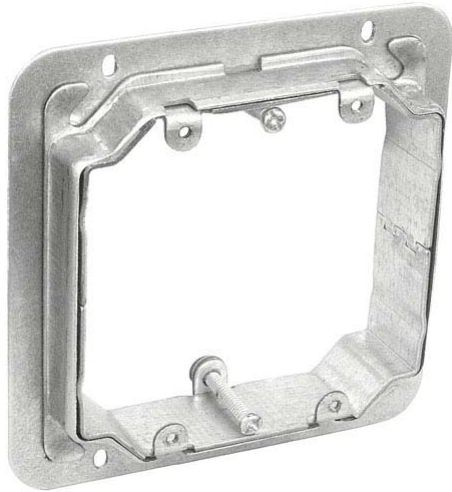


Stock #: AMR211B



Product Description:

Garvin Industries 4-11/16" Square Two Gang Adjustable Depth Device Rings are used to add Two power outlets or low voltage devices to existing box when finished wall thickness is unknown and may range from 3/4" to 1-1/2" thick tile, plaster or drywall.

Product Specifications:

Compliance :

Contact Garvin Industries today:

Phone: 1-847-455-0188

Fax: 1-847-455-0334

info@garvinindustries.com

www.garvinindustries.com