


Spring steel fasteners

**B-LINE**  
SERIES



**KwikWire™**  
Hanging system

**EATON**

*Powering Business Worldwide*

# KwikWire hanging system

Takes the strain out of hanging with chain



The KwikWire™ Hanging System is a flexible indoor replacement for jack chain and all thread rod that will help reduce your hanging time.

- Installs up to 50% faster - can quickly wrap around beams with no drilling required
- Simple height adjustments are made by releasing the clamp's adjustment pin - **no tools required**
- Aesthetic appeal - blends in with upper structural supports
- Compatible with many fastener, anchor, and hanger products
- Ideal for sloped ceiling applications - will support loads at up to a 60° angle from vertical
- 2 sku's cover a wide range of application requirements



## Application Photos

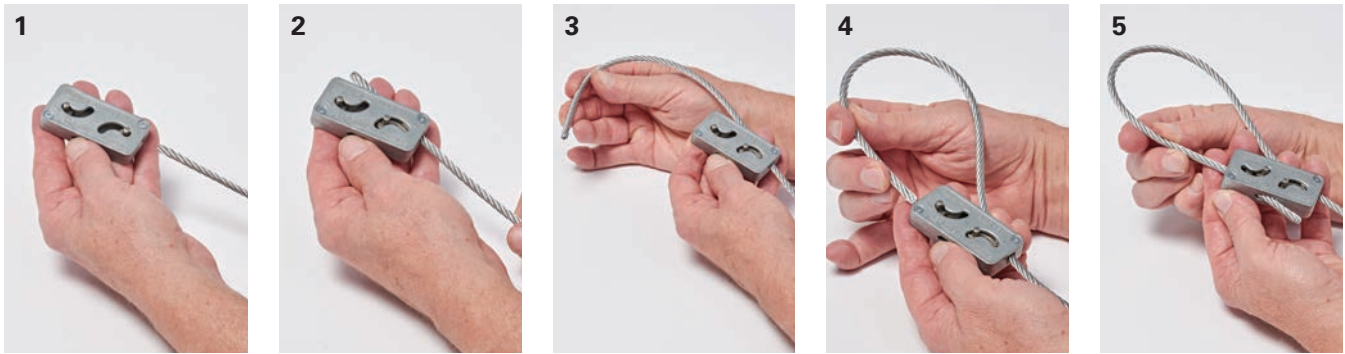


## Applications for the KwikWire Hanging System include:

- Light fixtures
- HVAC duct support
- Sway bracing
- Sign/banner supports
- Wire basket cable tray
- Bus duct
- Air handling equipment
- Drop ceilings

# KwikWire installation

## Instructions for installing the wire rope in the clamp



1. Pass the wire rope through the KwikWire™ clamp
2. Loop wire rope through or around support
3. Pass wire rope back through KwikWire clamp
4. Push wire rope through clamp leaving 2" to 3" tail, then apply tension on wire rope
5. To adjust, remove tension and pull wire rope slightly to disengage teeth, slide adjustment pin in direction shown by arrow to release wire rope.

**No tools are required.**

### **KwikWire System Recommendations:**

- Do not exceed the safe working load of the products
- KwikWire clamp load ratings are guaranteed only when used in combination with B-Line series wire rope
- Do not use for overhead lifting or hoisting
- Do not use if cable or components are visibly distorted or worn
- Remove damaged cable end prior to inserting in KwikWire clamp
- Do not paint cable near working area of KwikWire clamp
- Do not apply lubricant
- Keep product clean and free of dirt
- Do not use clamp on coated wire rope
- Do not use in chlorinated or caustic atmospheres
- For use in dry locations
- Our BKCC tool is recommended for cutting wire rope to prevent fraying

Note: Only use B-Line series wire rope with KwikWire clamps.

# KwikWire clamps, wire rope & cable cutter

## KwikWire Clamps

### KwikWire™ Clamps

UPC/Part Number	Catalog Number	For Use With Wire Rope Diameters	Box Qty.
782051 54697	BKC100	1/16" & 3/32"	100
782051 54698	BKC200	1/8" & 3/16"	50

See table below for KwikWire Clamp Working Loads

### KwikWire Clamp Working Loads\*

Clamp Part No.	Wire Rope Diameter	Lbs. Safety Factor 5
BKC100	1/16"	0-75
BKC100	3/32"	25-150
BKC200	3/32"	25-150
BKC200	1/8"	25-250
BKC200	3/16"	50-640



\* Working loads shown are for hanging vertically. For suspending at 15°, 30°, 45°, or 60° angles from vertical, use the following percentage of the working loads from the chart:  
 15° = 96% | 30° = 86% | 45° = 70% | 60° = 50%

## KwikWire Wire Rope

### KwikWire Wire Rope (Uncoated Galvanized Wire)

UPC/Part Number	Catalog Number	Rope Diameter	Working Load Lbs.	Spool Qty.
782051 40725	BKW063 (1)	1/16"	96	500 ft.
782051 40727	BKW094 (1)	3/32"	184	500 ft.
782051 40733	BKW125 (1)	1/8"	340	500 ft.
782051 40734	BKW188 (2)	3/16"	840	200 ft.

- (1) Wire Rope Construction Type 7x7
- (2) Wire Rope Construction Type 7x19



## KwikWire Cable Cutter

### KwikWire Cable Cutter\*\*

UPC/Part Number	Catalog Number	Box Qty.
782051 40297	BKCC	1

\*\* Danger: Never use cutters on energized circuits, wire, or cable

- Wire rope cutter for cutting all wire rope sizes



## KwikPak Wire Rope & Clamps

### KwikPak™ Wire Rope & Clamps

UPC/Part Number	Catalog Number	Kit Includes	Box Qty.
782051 40749	BKP10063	BKC100 (100 pcs.) 1/16" Ø Wire Rope (500 ft.)	1
782051 40751	BKP10094	BKC100 (100 pcs.) 3/32" Ø Wire Rope (500 ft.)	1
782051 40761	BKP20125	BKC200 (50 pcs.) 1/8" Ø Wire Rope (500 ft.)	1
782051 40763	BKP20188	BKC200 (50 pcs.) 3/16" Ø Wire Rope (250 ft.)	1



- KwikPak include KwikWire clamps and a spool of wire rope
- KwikPaks are shipped in a specially designed dispenser box to ease field cutting of wire

## KwikWire Hanger

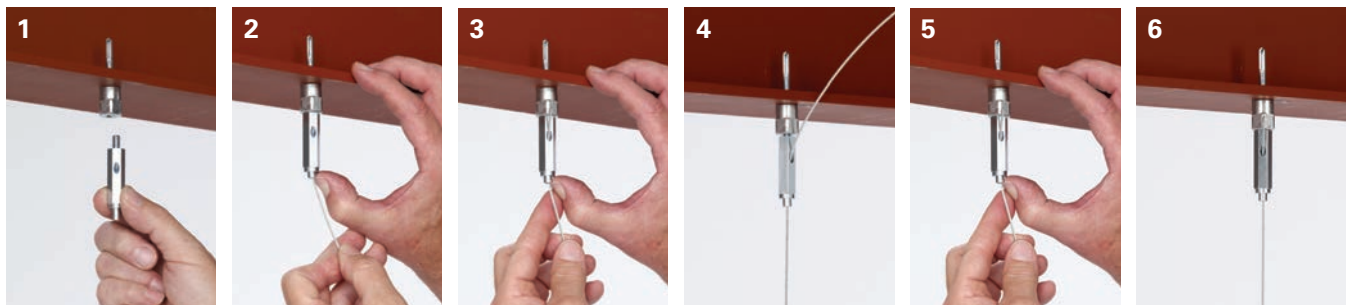
### KwikWire Hanger

UPC/Part Number	Thread Size	Wire Rope Diameter in. (mm)	Loading* SF5 lbs. (kg)	Box Qty.
BKF100-4	¼"-20	⅛" (1.5)	45 (20)	50
BKF100-6	⅜"-16	⅜" (2.5)	90 (40)	50



- KwikWire hanger combines the versatility of a bolt with an adjustable wire rope solution
- Can be quickly installed in existing anchors or metal brackets with a nut
- ARS, ARC, and ARW anchors are ideal for use with KwikWire hangers
- Ideal for supporting light fixtures, wire basket cable tray, HVAC ducts, and sign/banner supports
- Allows for tool-less adjustment of wire rope

## KwikWire Hanger Installation



1. Screw KwikWire Hanger into installed hanger support (ARS anchor pictured)
2. Push cable wire up through the bottom of KwikWire Hanger
3. Continue pushing through until ¼" minimum is extending out the side of the KwikWire Hanger
4. To adjust up - pull or push more cable wire through KwikWire Hanger
5. To adjust down - push up on bottom of KwikWire Hanger and allow cable wire to feed down
6. When hanging the cable wire is complete, cut off any excess cable wire if desired

# KwikWire™ accessory features & numbering system

## KwikWire Features & Benefits

- Helps reduce on the job installation time
- Can be installed quickly without drilling into existing structure
- Increases versatility in the field
- KwikWire accessory system reduces inventory and shipping costs
- No more sawing, filing, or fixing nuts
- Ideal for use for hanging cable tray, lighting, and HVAC
- Eliminates the need for all threaded rod
- Cost effective solution for jack chain
- “Y” style accessories require 50% less drilling



## KwikWire Accessory Numbering System

Product Line	Assembly Configuration	Leg Termination	Leg Length	Wire Rope Diameter	Straight Length	Assembly or Kit
BK = KwikWire	Blank = Single Leg  Y = 2 Legs 3 = 3 Legs	A = Angle Bracket with Pin  H = Hook  L = Loop T = Toggle  W = Fuse Cut  B25 = Bolt with ¼"-20" Thread B38 = Bolt with ⅜"-16" Thread BM6 = Bolt with M6 Thread BM8 = Bolt with M8 Thread BM10 = Bolt with M10 Thread	Blank = See Straight Length  18 = 18" Leg 30 = 30" Leg	063 = ¼" 094 = ⅜"	Blank = Loop with Plastic Tube  18 = 18" 30 = 30" 40 = 40" 80 = 80" 120 = 120" 180 = 180" 240 = 240" 360 = 360"	Blank = Assembly Only  K = Kit (Assembly & BKC100 Clamp)

## Examples

KwikWire Accessory  
**BKYT18-094-120K**



2 legs - toggle leg termination - 18" legs - ¼" diameter wire - 120" straight length - kit with clamp

KwikWire Accessory  
**BKL-063-120K**



single leg - looped leg termination - ¼" diameter wire - 120" straight length - kit with clamp

## KwikWire Loop Termination

### KwikWire Loop Termination

UPC/Part Number	Catalog Number	Wire Rope Diameter	Length
782051 67517	BKL-063-40	1/16"	40"
782051 67518	BKL-063-80	1/16"	80"
782051 67519	BKL-063-120	1/16"	120"
782051 67521	BKL-063-180	1/16"	180"
782051 68980	BKL-063-240	1/16"	240"
782051 67522	BKL-063-360	1/16"	360"
782051 67523	BKL-094-40	3/32"	40"
782051 67524	BKL-094-80	3/32"	80"
782051 67525	BKL-094-120	3/32"	120"
782051 67526	BKL-094-180	3/32"	180"
782051 68981	BKL-094-240	3/32"	240"
782051 67538	BKL-094-360	3/32"	360"



### Box Quantity - 20

5 bags containing 4 pieces per bag

## KwikWire Loop Termination Kits

### KwikWire Loop Termination Kits

UPC/Part Number	Catalog Number	Wire Rope Diameter	Length
782051 67346	BKL-063-40K	1/16"	40"
782051 67347	BKL-063-80K	1/16"	80"
782051 67348	BKL-063-120K	1/16"	120"
782051 67349	BKL-063-180K	1/16"	180"
782051 68838	BKL-063-240K	1/16"	240"
782051 67350	BKL-063-360K	1/16"	360"
782051 67351	BKL-094-40K	3/32"	40"
782051 67352	BKL-094-80K	3/32"	80"
782051 67353	BKL-094-120K	3/32"	120"
782051 67354	BKL-094-180K	3/32"	180"
782051 68839	BKL-094-240K	3/32"	240"
782051 67355	BKL-094-360K	3/32"	360"



### Box Quantity - 20

5 bags containing 4 pieces per bag

- Available as a wire rope with loop termination only or as a ready-to-use kit with a BKC100 clamp
- Available in lengths of 40", 80", 120", 180", 240", and 360"

# KwikWire accessories

## KwikWire Single Style Hook Termination

### KwikWire™ Single Style Hook Termination

UPC/Part Number	Catalog Number	Wire Rope Diameter	Length
782051 67501	BKH-094-40	3/32"	40"
782051 67502	BKH-094-80	3/32"	80"
782051 67503	BKH-094-120	3/32"	120"
782051 68986	BKH-094-180	3/32"	180"
782051 68987	BKH-094-240	3/32"	240"
782051 67504	BKH-094-360	3/32"	360"



**Box Quantity - 20**  
5 bags containing 4 pieces per bag

## KwikWire Single Style Hook Termination Kits

### KwikWire Single Style Hook Termination Kits

UPC/Part Number	Catalog Number	Wire Rope Diameter	Length
782051 67337	BKH-094-40K	3/32"	40"
782051 67338	BKH-094-80K	3/32"	80"
782051 67339	BKH-094-120K	3/32"	120"
782051 68841	BKH-094-180K	3/32"	180"
782051 68944	BKH-094-240K	3/32"	240"
782051 67340	BKH-094-360K	3/32"	360"



**Box Quantity - 20**  
5 bags containing 4 pieces per bag

## KwikWire 'Y' Style Hook Termination With Loop

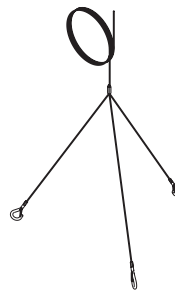
### KwikWire 'Y' Style Hook Termination With Loop

UPC/Part Number	Catalog Number	Wire Rope Diameter	Length
782051 67341	BKYH18-094	3/32"	18"
782051 68978	BKYH30-094	3/32"	30"



**Box Quantity - 10**  
5 bags containing 2 pieces per bag

- Hook designed to accept up to 3/8" diameter wire
- Available as a wire rope with hook termination only or as a ready-to-use kit with a BKC100 clamp
- Available in lengths of 40", 80", 120", 180", 240", and 360"
- Available in single, double (Y), and triple (3) leg styles



Triple (3) leg style



## KwikWire 'Y' Style Hook Termination

### KwikWire 'Y' Style Hook Termination

UPC/Part Number	Catalog Number	Leg Length	Wire Rope Diameter	Length
782051 67505	BKYH18-094-40	18"	3/32"	40"
782051 67506	BKYH18-094-80	18"	3/32"	80"
782051 67514	BKYH18-094-120	18"	3/32"	120"
782051 68988	BKYH18-094-180	18"	3/32"	180"
782051 68989	BKYH18-094-240	18"	3/32"	240"
782051 67515	BKYH18-094-360	18"	3/32"	360"
782051 68990	BKYH30-094-40	30"	3/32"	40"
782051 68991	BKYH30-094-80	30"	3/32"	80"
782051 68992	BKYH30-094-120	30"	3/32"	120"
782051 68993	BKYH30-094-180	30"	3/32"	180"
782051 68994	BKYH30-094-240	30"	3/32"	240"
782051 68995	BKYH30-094-360	30"	3/32"	360"



**Box Quantity - 10**  
5 bags containing 2 pieces per bag

## KwikWire 'Y' Style Hook Termination Kits

### KwikWire 'Y' Style Hook Termination Kits

UPC/Part Number	Catalog Number	Leg Length	Wire Rope Diameter	Length
782051 67342	BKYH18-094-40K	18"	3/32"	40"
782051 67343	BKYH18-094-80K	18"	3/32"	80"
782051 67344	BKYH18-094-120K	18"	3/32"	120"
782051 68856	BKYH18-094-180K	18"	3/32"	180"
782051 68945	BKYH18-094-240K	18"	3/32"	240"
782051 67345	BKYH18-094-360K	18"	3/32"	360"
782051 68946	BKYH30-094-40K	30"	3/32"	40"
782051 68948	BKYH30-094-80K	30"	3/32"	80"
782051 68949	BKYH30-094-120K	30"	3/32"	120"
782051 68950	BKYH30-094-180K	30"	3/32"	180"
782051 68951	BKYH30-094-240K	30"	3/32"	240"
782051 68952	BKYH30-094-360K	30"	3/32"	360"



**Box Quantity - 10**  
5 bags containing 2 pieces per bag

- Hook designed to accept up to 3/8" diameter wire
- Available as a wire rope with loop termination only or as a ready-to-use kit with a BKC100 clamp
- Available in lengths of 40", 80", 120", 180", 240", and 360"

## KwikWire Single Style Toggle Termination

### KwikWire Single Style Toggle Termination

UPC/Part Number	Catalog Number	Wire Rope Diameter	Length
782051 68996	BKT-063-40	1/16"	40"
782051 68997	BKT-063-80	1/16"	80"
782051 68998	BKT-063-120	1/16"	120"
782051 68999	BKT-063-180	1/16"	180"
782051 69000	BKT-063-240	1/16"	240"
782051 69001	BKT-063-360	1/16"	360"



**Box Quantity - 20**  
5 bags containing 4 pieces per bag

## KwikWire Single Style Toggle Termination Kits

### KwikWire Single Style Toggle Termination Kits

UPC/Part Number	Catalog Number	Wire Rope Diameter	Length
782051 68956	BKT-063-40K	1/16"	40"
782051 68845	BKT-063-80K	1/16"	80"
782051 68842	BKT-063-120K	1/16"	120"
782051 68843	BKT-063-180K	1/16"	180"
782051 68957	BKT-063-240K	1/16"	240"
782051 68844	BKT-063-360K	1/16"	360"



**Box Quantity - 20**  
5 bags containing 4 pieces per bag

## KwikWire 'Y' Style Toggle Termination With Loop

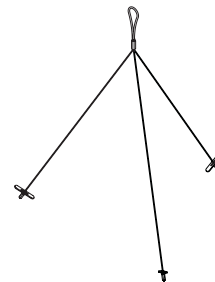
### KwikWire 'Y' Style Toggle Termination With Loop

UPC/Part Number	Catalog Number	Wire Rope Diameter	Length
782051 68440	BKYT12-063	1/16"	12"
782051 67356	BKYT18-063	1/16"	18"
782051 67362	BKYT30-063	1/16"	30"



**Box Quantity - 10**  
5 bags containing 2 pieces per bag

- Available as a wire rope with toggle termination only or as a ready-to-use kit with a BKC100 clamp
- Available in lengths of 40", 80", 120", 180", 240", and 360"
- Available in single, double (Y), and triple (3) leg styles
- All triple (3) leg styles are non-stock, consult us for lead times



Triple (3) leg style

## KwikWire 'Y' Style Toggle Termination

### KwikWire 'Y' Style Toggle Termination

UPC/Part Number	Catalog Number	Leg Length	Wire Rope Diameter	Length
782051 69002	BKYT12-063-40	12"	1/16"	40"
782051 69003	BKYT12-063-80	12"	1/16"	80"
782051 69004	BKYT12-063-120	12"	1/16"	120"
782051 69005	BKYT12-063-180	12"	1/16"	180"
782051 69006	BKYT12-063-240	12"	1/16"	240"
782051 69007	BKYT12-063-360	12"	1/16"	360"
782051 67540	BKYT18-063-40	18"	1/16"	40"
782051 67541	BKYT18-063-80	18"	1/16"	80"
782051 67542	BKYT18-063-120	18"	1/16"	120"
782051 67543	BKYT18-063-180	18"	1/16"	180"
782051 69008	BKYT18-063-240	18"	1/16"	240"
782051 67544	BKYT18-063-360	18"	1/16"	360"
782051 67545	BKYT30-063-40	30"	1/16"	40"
782051 67546	BKYT30-063-80	30"	1/16"	80"
782051 67547	BKYT30-063-120	30"	1/16"	120"
782051 67548	BKYT30-063-180	30"	1/16"	180"
782051 69009	BKYT30-063-240	30"	1/16"	240"
782051 67549	BKYT30-063-360	30"	1/16"	360"



**Box Quantity - 10**  
5 bags containing 2 pieces per bag

## KwikWire 'Y' Style Toggle Termination Kits

### KwikWire 'Y' Style Toggle Termination Kits

UPC/Part Number	Catalog Number	Leg Length	Wire Rope Diameter	Length
782051 68958	BKYT12-063-40K	12"	1/16"	40"
782051 68959	BKYT12-063-80K	12"	1/16"	80"
782051 68960	BKYT12-063-120K	12"	1/16"	120"
782051 68961	BKYT12-063-180K	12"	1/16"	180"
782051 68962	BKYT12-063-240K	12"	1/16"	240"
782051 68963	BKYT12-063-360K	12"	1/16"	360"
782051 67357	BKYT18-063-40K	18"	1/16"	40"
782051 67358	BKYT18-063-80K	18"	1/16"	80"
782051 67359	BKYT18-063-120K	18"	1/16"	120"
782051 67360	BKYT18-063-180K	18"	1/16"	180"
782051 68964	BKYT18-063-240K	18"	1/16"	240"
782051 67361	BKYT18-063-360K	18"	1/16"	360"
782051 67363	BKYT30-063-40K	30"	1/16"	40"
782051 67364	BKYT30-063-80K	30"	1/16"	80"
782051 67365	BKYT30-063-120K	30"	1/16"	120"
782051 67366	BKYT30-063-180K	30"	1/16"	180"
782051 68965	BKYT30-063-240K	30"	1/16"	240"
782051 67367	BKYT30-063-360K	30"	1/16"	360"



**Box Quantity - 10**  
5 bags containing 2 pieces per bag

- Available as a wire rope with loop termination only or as a ready-to-use kit with a BKC100 clamp
- Available in lengths of 40", 80", 120", 180", 240", and 360"

## KwikWire Bolt Termination

### KwikWire Bolt Termination

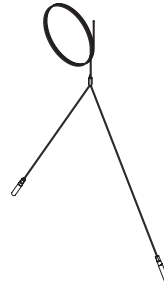
UPC/Part Number	Catalog Number	Thread Size	Wire Rope Diameter	Length
782051 67492	BKB25-063-40	¼"-20	⅛"	40"
782051 67493	BKB25-063-80	¼"-20	⅛"	80"
782051 67494	BKB25-063-120	¼"-20	⅛"	120"
782051 69010	BKB25-063-180	¼"-20	⅛"	180"
782051 69011	BKB25-063-240	¼"-20	⅛"	240"
782051 67495	BKB25-063-360	¼"-20	⅛"	360"
782051 67496	BKB38-094-40	⅜"-16	⅜"	40"
782051 67497	BKB38-094-80	⅜"-16	⅜"	80"
782051 67498	BKB38-094-120	⅜"-16	⅜"	120"
782051 69012	BKB38-094-180	⅜"-16	⅜"	180"
782051 69013	BKB38-094-240	⅜"-16	⅜"	240"
782051 67499	BKB38-094-360	⅜"-16	⅜"	360"



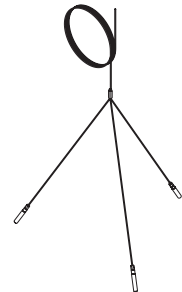
### Box Quantity - 20

5 bags containing 4 pieces per bag

- Ideal for use with ARS, ARC, ADI, ACPW, or ACPD anchors
- Available as a wire rope with bolt termination only or as a ready-to-use kit with a BKC100 clamp
- Available in lengths of 40", 80", 120", 180", 240", and 360"
- Available in single, double (Y), and triple (3) leg styles
- All triple (3) leg styles are non-stock, consult us for lead times



Double (Y) leg style



Triple (3) leg style

## KwikWire Bolt Termination Kits

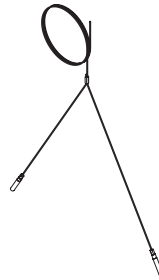
### KwikWire Bolt Termination Kits

UPC/Part Number	Catalog Number	Thread Size	Wire Rope Diameter	Length
782051 67329	BKB25-063-40K	¼"-20	⅛"	40"
782051 67330	BKB25-063-80K	¼"-20	⅛"	80"
782051 67331	BKB25-063-120K	¼"-20	⅛"	120"
782051 68966	BKB25-063-180K	¼"-20	⅛"	180"
782051 68967	BKB25-063-240K	¼"-20	⅛"	240"
782051 67332	BKB25-063-360K	¼"-20	⅛"	360"
782051 67333	BKB38-094-40K	⅜"-16	⅜"	40"
782051 67334	BKB38-094-80K	⅜"-16	⅜"	80"
782051 67335	BKB38-094-120K	⅜"-16	⅜"	120"
782051 68968	BKB38-094-180K	⅜"-16	⅜"	180"
782051 68969	BKB38-094-240K	⅜"-16	⅜"	240"
782051 67336	BKB38-094-360K	⅜"-16	⅜"	360"

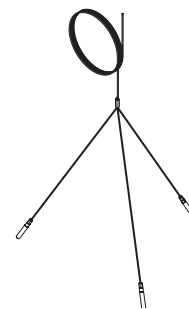


**Box Quantity - 20**  
5 bags containing 4 pieces per bag

- Ideal for use with ARS, ARC, ADI, ACPW, or ACPD anchors
- Available as a wire rope with bolt termination only or as a ready-to-use kit with a BKC100 clamp
- Available in lengths of 40", 80", 120", 180", 240", and 360"
- Available in single, double (Y), and triple (3) leg styles
- All triple (3) leg styles are non-stock, consult us for lead times



Double (Y) leg style



Triple (3) leg style

## KwikWire Angle Bracket Termination

### KwikWire Angle Bracket Toggle Termination

UPC/Part Number	Catalog Number	Wire Rope Diameter	Length
782051 68982	BKA-063-40	1/16"	40"
782051 68983	BKA-063-80	1/16"	80"
782051 67550	BKA-063-120	1/16"	120"
782051 67551	BKA-063-180	1/16"	180"
782051 68984	BKA-063-240	1/16"	240"
782051 68985	BKA-063-360	1/16"	360"



**Box Quantity - 20**  
5 bags containing 4 pieces per bag

## KwikWire Angle Bracket Termination Kits

### KwikWire Angle Bracket Toggle Termination Kits

UPC/Part Number	Catalog Number	Wire Rope Diameter	Length
782051 68933	BKA-063-40K	1/16"	40"
782051 68934	BKA-063-80K	1/16"	80"
782051 67368	BKA-063-120K	1/16"	120"
782051 67369	BKA-063-180K	1/16"	180"
782051 68935	BKA-063-240K	1/16"	240"
782051 68943	BKA-063-360K	1/16"	360"



**Box Quantity - 20**  
5 bags containing 4 pieces per bag

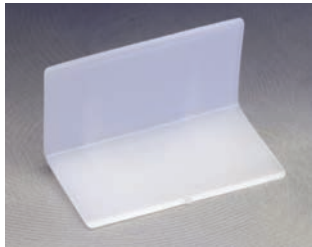
- Available as a wire rope with angle bracket termination only or as a ready-to-use kit with a BKC100 clamp
- Available in lengths of 40", 80", 120", 180", 240", and 360"

## KwikWire Accessories

### KwikWire Bolt Termination

UPC/Part Number	Catalog Number	Description	Box Qty.
782051 40766	BKCP	Air Duct Corner Protectors	100
781011 56059	B601-62†	Air Duct Support	100
781011 04270	BF3†	Vertical Flange Hanger For 1/16" to 1/4" Thick Flanges	100
781011 04271	BF4†	'Z' Purlin Hanger For 1/16" to 1/4" Thick Flanges	100
781011 18290	BE-1-2†	Beam Fastener For 3/32" to 9/64" Thick Flanges	100
781011 18295	BE-2-4†	Beam Fastener For 1/8" to 1/4" Thick Flanges	100
781011 18300	BE-5-8	Beam Fastener For 5/16" to 1/2" Thick Flanges	100
781011 18305	BE-9-12†	Beam Fastener For 9/16" to 3/4" Thick Flanges	100
781011 01236	BH15†	Side Mount Fluorescent Light Fixture Hanger	100
781011 01237	BH16†	Top Mount Fluorescent Light Fixture Hanger	100
782051 53323	ARS-25-100SW†	Steel Side Mount Rod Hanger	100
782051 53336	ARW-25-100SW†	Concrete Side Mount Rod Hanger	100
781011 04294	AWA-25-200WH†	Wedge Expansion Wire Hanger	100
781011 53277	ADA-18WH†	Drive Anchor Wire Hanger	100
781011 04297	ADA-25WH†	Drive Anchor Wire Hanger	100
781011 53342	ASA-31-150WH†	Sleeve Type Expansion Wire Hanger	100

† For loading, see spring steel fastener catalog



BKCP



BH15



BH16



BE-1-2  
BE-2-4

BE-5-8  
BE-9-12



B601-62



ARS-25-100SW



ARW-25-100SW



ASA-31-150WH



AWA-25-200WH



ADA-18WH  
ADA-25WH



BF3



BF4

For more information  
visit [eaton.com/kwikwire](http://eaton.com/kwikwire).

**U.S. Customer Service Center is staffed Monday through Friday from 7 a.m. to 5 p.m. Central Standard Time.**



**Eaton**  
1000 Eaton Boulevard  
Cleveland, OH 44122  
United States  
[Eaton.com](http://Eaton.com)

© 2019 Eaton  
All Rights Reserved  
Printed in USA  
Publication No. CA306003EN / KWHS-19  
September 2019

Eaton is a registered trademark.

All other trademarks are property  
of their respective owners.

Follow us on social media to get the  
latest product and support information.

