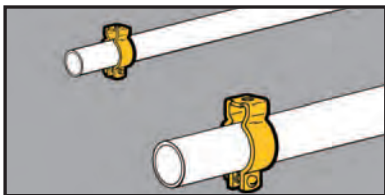


# Conduit & Cable



- For use with 1/2" thru 4" Conduit.
- Static Load Capacity: 400 lbs.
- Now available in DURA-COPPER™ finish - add DCU to part number.
- Finish: Zinc-Plated

## Conduit Hangers



With Retained Bolt  
And  
Thread Impression



UPC/Part Number	Catalog Number	Trade Size	Conduit Size		Box Qty.
			EMT	Rigid	
781011 19800	<b>BL1400*</b>	0	1/2"	1/2"	100
781011 19801	<b>BL1410*</b>	1	3/4"	3/4"	100
781011 19802	<b>BL1420*</b>	2	1"	1"	100



With Bolt And Nut

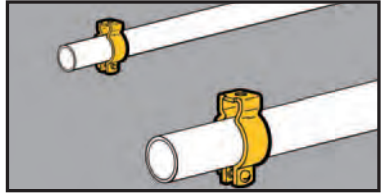


UPC/Part Number	Catalog Number	Trade Size	Conduit Size		Box Qty.
			EMT	Rigid	
781011 19803	<b>BL1425*</b>	2.5	1 1/4"	--	100
781011 19804	<b>BL1430*</b>	3	1 1/2"	1 1/4"	100
781011 19805	<b>BL1440†</b>	4	--	1 1/2"	50
781011 19806	<b>BL1450†</b>	5	2"	2"	50
781011 19807	<b>BL1460†</b>	6	2 1/2"	2 1/2"	25
781011 19808	<b>BL1470†</b>	7	3"	3"	25
781011 19809	<b>BL1480†</b>	8	3 1/2"	3 1/2"	10
781011 19810	<b>BL1490†</b>	9	4"	4"	10

\* 9/32" mounting hole. † 11/32" mounting hole.

Read safety/installation instruction sheets in packages before use.

- For use with 1/2" thru 4" Conduit.
- Static Load Capacity: 400 lbs.
- Material: Type 304 Stainless Steel



## Stainless Steel Conduit Hangers



With Retained Bolt  
And  
Thread Impression



UPC/Part Number	Catalog Number	Trade Size	Conduit Size		Box Qty.
			EMT	Rigid	
781011 57490	<b>BL1400-SS4*</b>	0	1/2"	1/2"	25
781011 57497	<b>BL1410-SS4*</b>	1	3/4"	3/4"	25
781011 57506	<b>BL1420-SS4*</b>	2	1"	1"	25



With Bolt And Nut

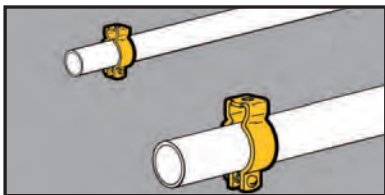


UPC/Part Number	Catalog Number	Trade Size	Conduit Size		Box Qty.
			EMT	Rigid	
781011 87485	<b>BL1425-SS4*</b>	2.5	1 1/4"	--	25
781011 57517	<b>BL1430-SS4*</b>	3	1 1/2"	1 1/4"	25
781011 57525	<b>BL1440-SS4†</b>	4	--	1 1/2"	25
781011 57535	<b>BL1450-SS4†</b>	5	2"	2"	10
781011 57546	<b>BL1460-SS4†</b>	6	2 1/2"	2 1/2"	10
781011 87481	<b>BL1470-SS4†</b>	7	3"	3"	10
781011 87486	<b>BL1480-SS4†</b>	8	3 1/2"	3 1/2"	10
781011 87482	<b>BL1490-SS4†</b>	9	4"	4"	10

\* 9/32" mounting hole. † 11/32" mounting hole.

Read safety/installation instruction sheets in packages before use. These products are designed for positioning only. No load rating.

# Conduit & Cable



- For use with 1/2" thru 4" Conduit.
- Static Load Capacity: 400 lbs.
- Now available in DURA-COPPER™ finish - add DCU to part number.
- Finish: Zinc-Plated

## Conduit Hangers



With Retained Bolt  
And  
Thread Impression



UPC/Part Number	Catalog Number	Trade Size	Conduit Size		Box Qty.
			EMT	Rigid	
781011 19800	<b>BL1400*</b>	0	1/2"	1/2"	100
781011 19801	<b>BL1410*</b>	1	3/4"	3/4"	100
781011 19802	<b>BL1420*</b>	2	1"	1"	100



With Bolt And Nut

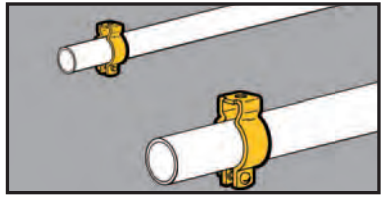


UPC/Part Number	Catalog Number	Trade Size	Conduit Size		Box Qty.
			EMT	Rigid	
781011 19803	<b>BL1425*</b>	2.5	1 1/4"	--	100
781011 19804	<b>BL1430*</b>	3	1 1/2"	1 1/4"	100
781011 19805	<b>BL1440†</b>	4	--	1 1/2"	50
781011 19806	<b>BL1450†</b>	5	2"	2"	50
781011 19807	<b>BL1460†</b>	6	2 1/2"	2 1/2"	25
781011 19808	<b>BL1470†</b>	7	3"	3"	25
781011 19809	<b>BL1480†</b>	8	3 1/2"	3 1/2"	10
781011 19810	<b>BL1490†</b>	9	4"	4"	10

\* 9/32" mounting hole. † 11/32" mounting hole.

Read safety/installation instruction sheets in packages before use.

- For use with 1/2" thru 4" Conduit.
- Static Load Capacity: 400 lbs.
- Material: Type 304 Stainless Steel



## Stainless Steel Conduit Hangers



With Retained Bolt  
And  
Thread Impression



UPC/Part Number	Catalog Number	Trade Size	Conduit Size		Box Qty.
			EMT	Rigid	
781011 57490	<b>BL1400-SS4*</b>	0	1/2"	1/2"	25
781011 57497	<b>BL1410-SS4*</b>	1	3/4"	3/4"	25
781011 57506	<b>BL1420-SS4*</b>	2	1"	1"	25



With Bolt And Nut



UPC/Part Number	Catalog Number	Trade Size	Conduit Size		Box Qty.
			EMT	Rigid	
781011 87485	<b>BL1425-SS4*</b>	2.5	1 1/4"	--	25
781011 57517	<b>BL1430-SS4*</b>	3	1 1/2"	1 1/4"	25
781011 57525	<b>BL1440-SS4†</b>	4	--	1 1/2"	25
781011 57535	<b>BL1450-SS4†</b>	5	2"	2"	10
781011 57546	<b>BL1460-SS4†</b>	6	2 1/2"	2 1/2"	10
781011 87481	<b>BL1470-SS4†</b>	7	3"	3"	10
781011 87486	<b>BL1480-SS4†</b>	8	3 1/2"	3 1/2"	10
781011 87482	<b>BL1490-SS4†</b>	9	4"	4"	10

\* 9/32" mounting hole. † 11/32" mounting hole.

Read safety/installation instruction sheets in packages before use. These products are designed for positioning only. No load rating.