

# BMP®51 Label Maker

BradyID.com/s35



## BMP®51 LABEL MAKER

### Made to get the job done.

Print continuous and die cut labels up to 1.5" wide and with more material options.

- Ribbon and label materials in one easy to load cartridge
- Prints 1 inch per second!
- 200+ label parts in 14 materials
- 1" sleeves and 1.5" continuous output
- Material recognition and automatic label formatting
- Large, graphical display with backlight
- Durable built-in cutter with label retention
- Robust software for advanced label design
- Optional Wi-Fi card for wireless printing via a network
- Tough, durable label materials that won't fade, smear or fall off

#### BMP®51 Printer Specifications

Print Speed	1.18"/sec (w/AC Adapter)
Print & Color Capabilities	Thermal Transfer / Monochrome
Print Resolution	300 dpi
PC Compatibility or Stand Alone	Stand alone & PC connect
Connectivity Options	USB/WIFI (field installable), LAN
Software Compatibility	LabelMark™, Brady Workstation Apps, Brady Mobile Apps w/ WiFi card
Power Supply Options	LI-ION rechargeable battery, 8AA, AC adapter
Standard Warranty	2 years
Dimensions	6" W x 10.3" H x 3.6" D
Weight	2.6 lbs (w/o tape, batteries)

#### Print Features

Screen Size	13 lines x 36 characters
Back Lit Screen	Yes
Keyboard Style	QWERTY
Max Print Width	1.5"
Font Types Available	(2) Brady Alpine and Brady Fixed Width
Font Sizes (points)	Custom, Auto, 4, 6, 7, 9, 10, 13, 14, 16, 20, 26, 28, 32, 38, 40, 42, 45, 51, 55, 60, 65, 70, 76, 102
Multi-Line Label Capabilities	32
Label Print Rotation	Yes
Data Serialization	Yes, multiple and linked
Barcode Capabilities & Types	Code 39, Code 128 and more using Brady Workstation
Memory Capacity	25,000 characters up to 48 MB
Data Transfer from PC to Printer	Yes
Print Preview	Yes
Symbols Available	450

#### Label Supply Characteristics

Label/Ribbon Supply	Cartridge w/ included ribbon
Material Formats Supported	Continuous & Die Cut Labels
Media Width	0.25"-1.5"
Types of Materials	Outdoor Vinyl, Nylon Cloth Wire ID, Heat Shrink Wire ID, Self-Laminating Wire ID, Removable Cloth Wire ID, Datacomm Cable Tags (3), Standard Polyester, Aggressive Adhesive Polyester, Metallized Polyester, Non-Adhesive Tag, Outdoor Reflective
Quantity of Label Parts Available	200+ label parts
Cartridge Series	M-series

Learn more at: [BradyID.com/bmp51](http://BradyID.com/bmp51)

#### Your Complete Printing Solution:

BMP51 cartridges with label and print ribbon..... page 326

#### BMP®51 Label Maker & Accessories

Catalog #	Description
BMP51	BMP51 Printer*, Rechargeable Li-Ion Battery Pack and AC Adaptor/Battery Charger
BMP51-KIT-AC	BMP51 Printer* with AC Adaptor/Battery Charger
BMP51-KIT-LMK	BMP51 Printer*, LabelMark & AC Adaptor
Accessories	
M50-MAGNET	BMP50 Series Magnet Accessory
BMP-UBP	Lithium Ion Rechargeable Battery Pack
BMP-UBP-AC	Lithium Ion Rechargeable Battery Pack with AC Adaptor/Battery Charger
NET-LAN	Brady Network Card - Ethernet only
NET-WIFI	Brady Network Card - WiFi only
M50-HC	BMP50 Series Hard Carrying Case
M50-SC	BMP50 Series Soft Carrying Case
M-AC-143110	BMP50 Series AC Adaptor/Battery Charger
M-USB-103788	BMP50 Series USB Cable
M50-BATT-TRAY	BMP50 Series Spare Battery Tray

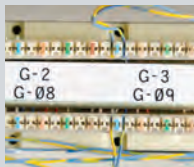
\* Printer ships with Hard Carrying Case, Battery Tray for AA batteries, USB Cable, Drivers CD, Product CD, Quick Start Guide, and one MC-1500-595-WT-BK. Network card sold separately.

Patents applied for: 6,732,619 and 7,070,347 on printer. 6,929,415 on the PermaSleeve® cartridges. 8,542,155 on wireless and ethernet cards.



(Catalog #BMP51 shown)

### Get the job done FASTER, EASIER and WITH CONFIDENCE.



Voice & Data Communications



PermaSleeve® Wire Marking Sleeves



Product Identification



Facility & Safety Identification



Laboratory Identification



General ID ...and many more!

Portable Printers

BMP51

# BMP®51 Label Maker

BradyID.com/s35



## BMP®51 LABEL MAKER

### Made to get the job done.

Print continuous and die cut labels up to 1.5" wide and with more material options.

- Ribbon and label materials in one easy to load cartridge
- Prints 1 inch per second!
- 200+ label parts in 14 materials
- 1" sleeves and 1.5" continuous output
- Material recognition and automatic label formatting
- Large, graphical display with backlight
- Durable built-in cutter with label retention
- Robust software for advanced label design
- Optional Wi-Fi card for wireless printing via a network
- Tough, durable label materials that won't fade, smear or fall off

#### BMP®51 Printer Specifications

Print Speed	1.18"/sec (w/AC Adapter)
Print & Color Capabilities	Thermal Transfer / Monochrome
Print Resolution	300 dpi
PC Compatibility or Stand Alone	Stand alone & PC connect
Connectivity Options	USB/WIFI (field installable), LAN
Software Compatibility	LabelMark™, Brady Workstation Apps, Brady Mobile Apps w/ WiFi card
Power Supply Options	LI-ION rechargeable battery, 8AA, AC adapter
Standard Warranty	2 years
Dimensions	6" W x 10.3" H x 3.6" D
Weight	2.6 lbs (w/o tape, batteries)

#### Print Features

Screen Size	13 lines x 36 characters
Back Lit Screen	Yes
Keyboard Style	QWERTY
Max Print Width	1.5"
Font Types Available	(2) Brady Alpine and Brady Fixed Width
Font Sizes (points)	Custom, Auto, 4, 6, 7, 9, 10, 13, 14, 16, 20, 26, 28, 32, 38, 40, 42, 45, 51, 55, 60, 65, 70, 76, 102
Multi-Line Label Capabilities	32
Label Print Rotation	Yes
Data Serialization	Yes, multiple and linked
Barcode Capabilities & Types	Code 39, Code 128 and more using Brady Workstation
Memory Capacity	25,000 characters up to 48 MB
Data Transfer from PC to Printer	Yes
Print Preview	Yes
Symbols Available	450

#### Label Supply Characteristics

Label/Ribbon Supply	Cartridge w/ included ribbon
Material Formats Supported	Continuous & Die Cut Labels
Media Width	0.25"-1.5"
Types of Materials	Outdoor Vinyl, Nylon Cloth Wire ID, Heat Shrink Wire ID, Self-Laminating Wire ID, Removable Cloth Wire ID, Datacomm Cable Tags (3), Standard Polyester, Aggressive Adhesive Polyester, Metallized Polyester, Non-Adhesive Tag, Outdoor Reflective
Quantity of Label Parts Available	200+ label parts
Cartridge Series	M-series

**Learn more at: [BradyID.com/bmp51](http://BradyID.com/bmp51)**

#### Your Complete Printing Solution:

BMP51 cartridges with label and print ribbon..... page 326

#### BMP®51 Label Maker & Accessories

Catalog #	Description
BMP51	BMP51 Printer*, Rechargeable Li-Ion Battery Pack and AC Adaptor/Battery Charger
BMP51-KIT-AC	BMP51 Printer* with AC Adaptor/Battery Charger
BMP51-KIT-LMK	BMP51 Printer*, LabelMark & AC Adaptor
Accessories	
M50-MAGNET	BMP50 Series Magnet Accessory
BMP-UBP	Lithium Ion Rechargeable Battery Pack
BMP-UBP-AC	Lithium Ion Rechargeable Battery Pack with AC Adaptor/Battery Charger
NET-LAN	Brady Network Card - Ethernet only
NET-WIFI	Brady Network Card - WiFi only
M50-HC	BMP50 Series Hard Carrying Case
M50-SC	BMP50 Series Soft Carrying Case
M-AC-143110	BMP50 Series AC Adaptor/Battery Charger
M-USB-103788	BMP50 Series USB Cable
M50-BATT-TRAY	BMP50 Series Spare Battery Tray

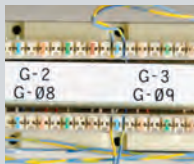
\* Printer ships with Hard Carrying Case, Battery Tray for AA batteries, USB Cable, Drivers CD, Product CD, Quick Start Guide, and one MC-1500-595-WT-BK. Network card sold separately.

Patents applied for: 6,732,619 and 7,070,347 on printer. 6,929,415 on the PermaSleeve® cartridges. 8,542,155 on wireless and ethernet cards.



(Catalog #BMP51 shown)

### Get the job done FASTER, EASIER and WITH CONFIDENCE.



Voice & Data Communications



PermaSleeve® Wire Marking Sleeves



Product Identification



Facility & Safety Identification



Laboratory Identification



General ID ...and many more!

Portable Printers

BMP51