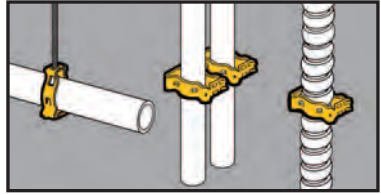
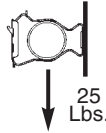


Conduit & Cable

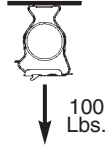
- Supports 3/8" to 2" conduit.
- Unique **Guide-Rite** Fastener provides for fast and easy installation with pliers.
- **New** redesigned BG-6 accomodates a wide variety of MC/AC cables.
- Now available in DURA-COPPER™ finish - add DCU to part number.
- Static Load Capacity:
100 Lbs. - Vertical
25 Lbs. - Horizontal



Guide-Rite™ Conduit Fasteners



Static Load Capacity



Clearance Hole
For 1/4" Bolt



| UPC/Part Number | Catalog Number | Conduit Size EMT/Rigid | Box Qty. |
|-----------------|----------------|------------------------|----------|
| 781011 18350 | BG-6* | 3/8" | 100 |
| 781011 18355 | BG-8-12 | 1/2", 3/4" | 100 |
| 781011 18360 | BG-16 | 1" | 100 |
| 781011 18365 | BG-20 | 1 1/4" | 100 |
| 781011 18370 | BG-24 | 1 1/2" | 100 |
| 781011 18375 | BG-32 | 2" | 100 |

Patent #4958792



1/4"-20
Thread Impression



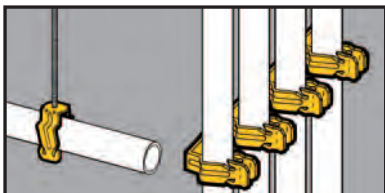
| UPC/Part Number | Catalog Number | Conduit Size EMT/Rigid | Box Qty. |
|-----------------|-------------------|------------------------|----------|
| 781011 18380 | BG-6-4T* | 3/8" | 100 |
| 781011 18385 | BG-8-12-4T | 1/2", 3/4" | 100 |
| 781011 18390 | BG-16-4T | 1" | 100 |
| 781011 18395 | BG-20-4T | 1 1/4" | 100 |
| 781011 18400 | BG-24-4T | 1 1/2" | 100 |
| 781011 18405 | BG-32-4T | 2" | 100 |

Patent #4958792

- * BG-6 and BG-6-4T will accept the following range $\varnothing.420 - \varnothing.675$:
1 1/2 thru 10/4 MC/AC cable and 5/16 or 3/8 flexible conduit

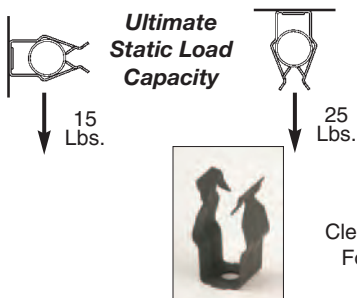
Read safety/installation instruction sheets in packages before use.

Conduit & Cable



- Conduit easily snaps into push type fastener for secure support.
- Available with clearance hole for 1/4" bolt or 1/4"-20 thread impression.
- **Ultimate Static Load Capacity:**
25 Lbs. Vertical
15 Lbs. Horizontal

Push-Type Conduit Fasteners



Conduit & Cable

| UPC/Part Number | Catalog Number | Conduit Size | Box Qty. |
|-----------------|----------------|-----------------------------|----------|
| 781011 19200 | BP-8 | 1/2" EMT | 100 |
| 781011 19205 | BP-12 | 3/4" EMT 1/2" IMC, Rigid | 100 |
| 781011 19210 | BP-16 | 1" EMT 3/4" IMC, Rigid | 100 |



1/4"-20
Thread Impression

| UPC/Part Number | Catalog Number | Conduit Size | Box Qty. |
|-----------------|-----------------|-----------------------------|----------|
| 781011 19215 | BP-8-4T | 1/2" EMT | 100 |
| 781011 19220 | BP-12-4T | 3/4" EMT 1/2" IMC, Rigid | 100 |
| 781011 19225 | BP-16-4T | 1" EMT 3/4" IMC, Rigid | 100 |

Read safety/installation instruction sheets in packages before use.